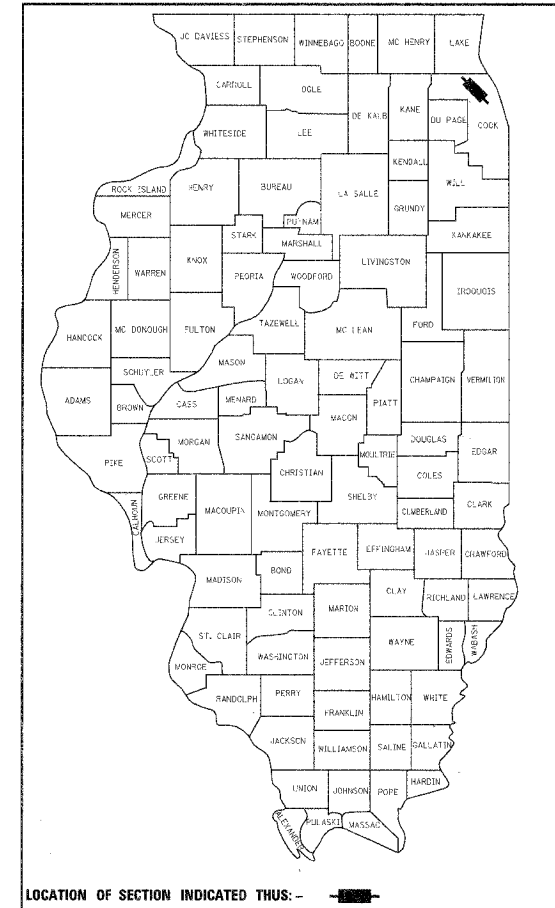


| F.A.P. RTE. | SECTION | COUNTY | TOTAL SHEETS | SHEET NO. |
|-------------|---------|--------|--------------|-----------|
| 374         | G-B-I-1 | COOK   | 15           | 1         |

CONTRACT NO. 60D59

15  
+ 4  
19

D-91-048-02



LOCATION OF SECTION INDICATED THUS: - [Arrow] -

STATE OF ILLINOIS  
DEPARTMENT OF TRANSPORTATION  
DIVISION OF HIGHWAYS

SUBMITTED August 27 20 07  
Diane O'Keefe  
DEPUTY DIRECTOR OF HIGHWAYS, REGION 1 ENGINEER

October 12, 20 07  
Eric E. Haral  
Interim ENGINEER OF DESIGN AND ENVIRONMENT

October 12, 20 07  
Milton R. Sess P.E.  
DIRECTOR, DIVISION OF HIGHWAYS

**STV Incorporated**  
engineers/architects/scientists/construction managers

200 W Monroe - Suite 1650  
Chicago, Illinois 60606  
(312) 553-0655  
FAX: (312) 553-0661

**PRINTED BY THE AUTHORITY  
OF THE STATE OF ILLINOIS**

STATE OF ILLINOIS  
DEPARTMENT OF TRANSPORTATION  
DIVISION OF HIGHWAYS

# PROPOSED HIGHWAY PLANS

FAP ROUTE 374 (IL ROUTE 21), MILWAUKEE AVE.  
OVER DES PLAINES RIVER

SECTION G-B-I-1  
BEAM AND BEARING FABRICATION  
COOK COUNTY  
C-91-053-08

FOR INDEX OF SHEETS, SEE SHEET 2.

PROJECT LOCATED IN  
CITY OF PROSPECT HEIGHTS AND  
FOREST PRESERVE DISTRICT OF COOK COUNTY

**DESIGN DESIGNATION**

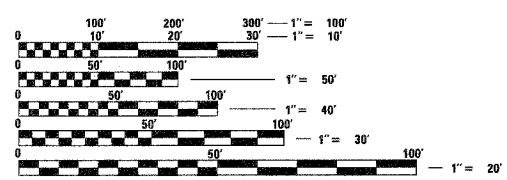
2750 (20) OTHER PRINCIPAL  
ARTERIAL 6.03 (PCC-20)

**TRAFFIC DATA**

ADT 24,530 (1998)  
27,500 (2020)  
33,000 (2030)

POSTED SPEED 40 MPH

DESIGN SPEED 45 MPH

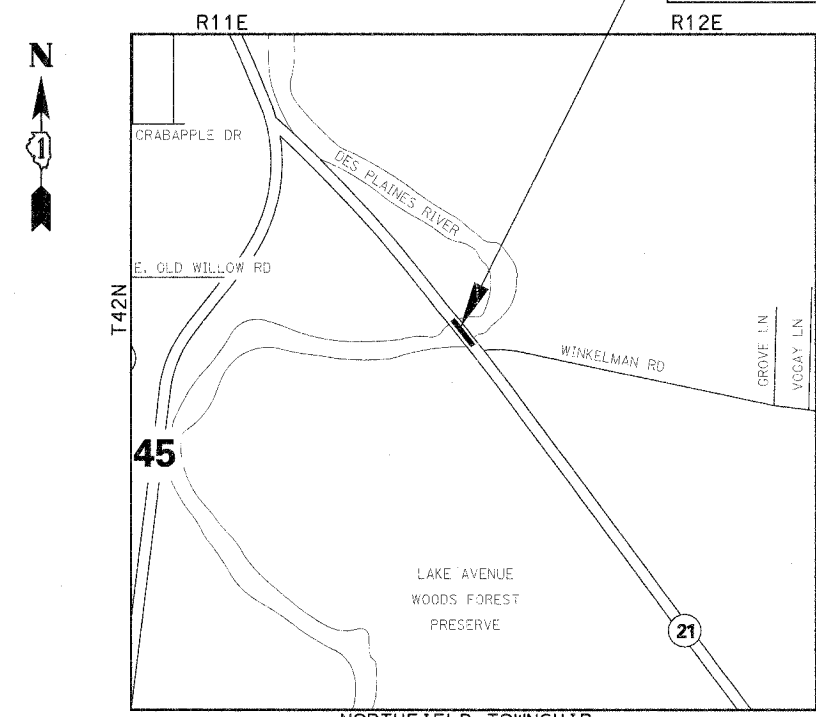


FULL SIZE PLANS HAVE BEEN PREPARED USING STANDARD  
ENGINEERING SCALES. REDUCED SIZED PLANS WILL NOT  
CONFORM TO STANDARD SCALES. IN MAKING MEASUREMENTS  
ON REDUCED PLANS, THE ABOVE SCALES MAY BE USED.

J.U.L.I.E.  
JOINT UTILITY LOCATION INFORMATION FOR EXCAVATION  
1-800-892-0123

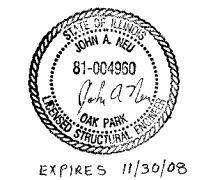
CONTRACT NO. 60D59

BEAM AND BEARING FABRICATION  
FOR THE BRIDGE OVER DES PLAINES  
RIVER, STRUCTURE NO. 016-6566



NORTHFIELD TOWNSHIP  
**LOCATION MAP**  
SCALE: 1"=500'

GROSS LENGTH OF IMPROVEMENT 162'-6 1/4"  
NET LENGTH OF IMPROVEMENT 162'-6 1/4"



SEAL

DISTRICT ONE CONSULTANT PROJECT MANAGER KURT NAUS - (847) 705-4232