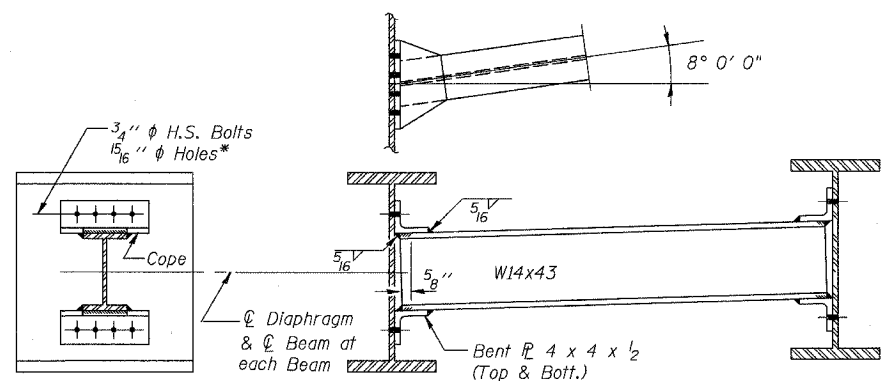


F.A.P. RTE.	SECTION	COUNTY	TOTAL SHEETS	SHEET NO.
374	G-B-I-1	COOK	15	14
STA.		TO STA.		
FED. ROAD DIST. NO.	ILLINOIS	FED. AID PROJECT		

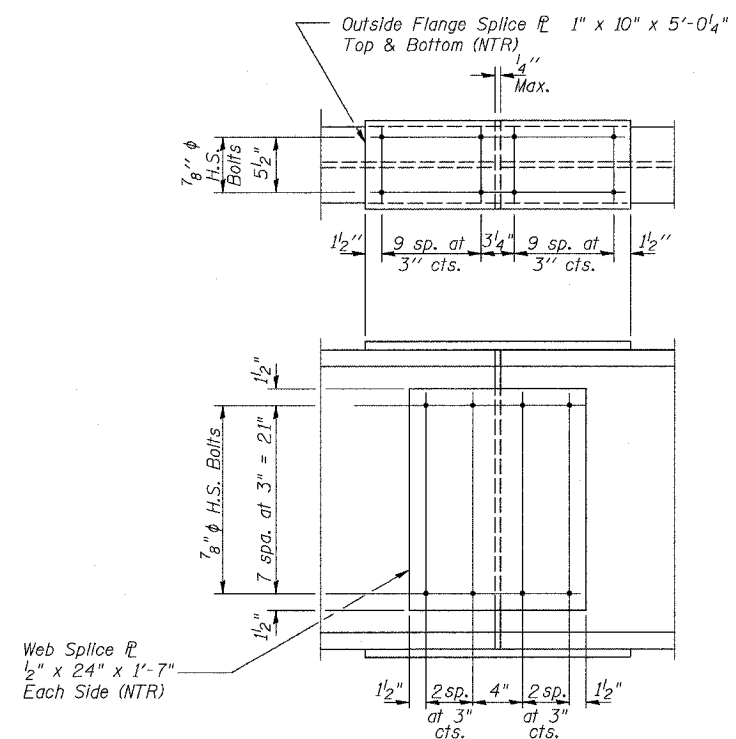
CONTRACT NO. 60D59



**DIAPHRAGM D1**  
54-Required

\* Provide 5/16" x 2" vertical slotted holes in angles for diaphragms in stage construction bay (West Side of Beam 5).

- Notes:
- 1) Two hardened washers shall be required over all oversize holes for diaphragms.
  - 2) All splice plates shall conform to the supplemental requirements for Notch Toughness Zone 2. (NTR) in accordance with the General Notes.
  - 3) Structural steel for diaphragms, filler plates and connection angles shall be AASHTO M270 Grade 50W.
  - 4) Structural steel for splice plates shall be AASHTO M270 Grade 50W.



**SPLICE**  
20-Required

REVISIONS	
NAME	DATE

ILLINOIS DEPARTMENT OF TRANSPORTATION  
ILLINOIS ROUTE 21  
MILWAUKEE AVE. OVER DES PLAINES RIVER  
F.A.P. ROUTE 374 SECTION G-B-I-1  
COOK COUNTY, SN 016-6566

DIAPHRAGM/SPLICE DETAILS  
DESIGN BY: BTO DRAWN BY: BTO  
DATE: 8/29/07 CHECKED BY: JAN CHECKED BY: JAN

**STV Incorporated**  
Engineers/Architects/Planners/Construction Managers  
200 W. Monroe Street, Suite 1650  
Chicago, IL 60606-5015  
312/753-0655, FAX 312/553-0661