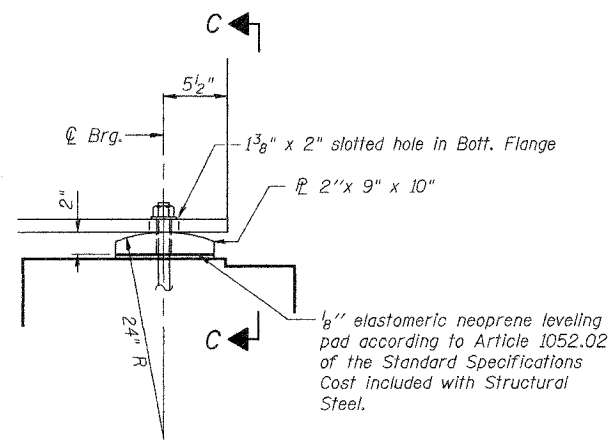


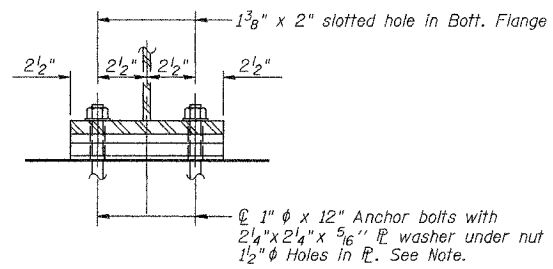
F.A.P. RTE.	SECTION	COUNTY	TOTAL SHEETS	SHEET NO.
374	G-B-I-1	COOK	15	15
STA.		TO STA.		
FED. ROAD DIST. NO.	ILLINOIS	FED. AID PROJECT		

CONTRACT NO. 60D59

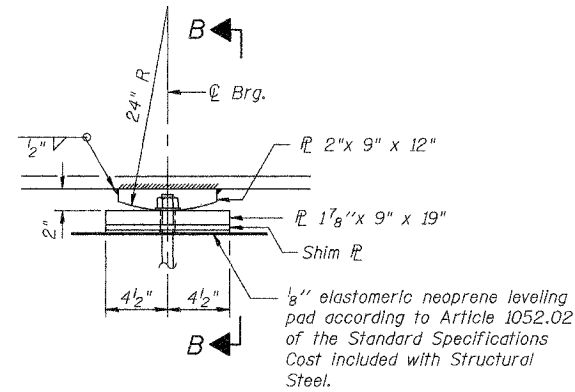


ELEVATION

BEARING AT INTEGRAL ABUTMENT

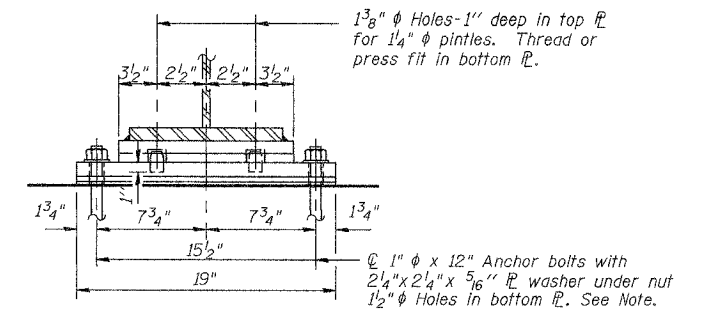


SECTION C-C

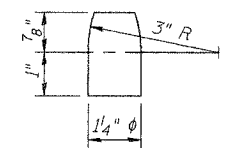


ELEVATION AT PIER

FIXED BEARING



SECTION B-B



PINTLE

Notes:

Structural steel for bearing plates shall be AASHTO M270, Grade 50W.

Anchor bolts for bearing plates shall be 1" x 12" A307 Gr C, F 1554 Gr 36 or M314 Gr 36.

Structural steel for bearing plates shall be AASHTO M270, Grade 50W.

ANCHOR BOLTS ARE NOT PART OF THIS CONTRACT

REVISIONS	
NAME	DATE

ILLINOIS DEPARTMENT OF TRANSPORTATION
 ILLINOIS ROUTE 21
 MILWAUKEE AVE. OVER DES PLAINES RIVER
 F.A.P. ROUTE 374 SECTION G-B-I-1
 COOK COUNTY, SN 016-6566

BEARING DETAILS

DESIGN BY: BTO DRAWN BY: BTO
 DATE: 8/29/07 CHECKED BY: JAN CHECKED BY: JAN

STV Incorporated
 Engineers/Architects/Planners/Construction Managers
 200 W. Monroe Street, Suite 1650
 Chicago, IL 60606-3013
 312.553-0655, FAX 312.553-0661

I:\Projects\60D59\60D59-15\60D59-15-15.dwg 8/29/07 1:05:05 PM