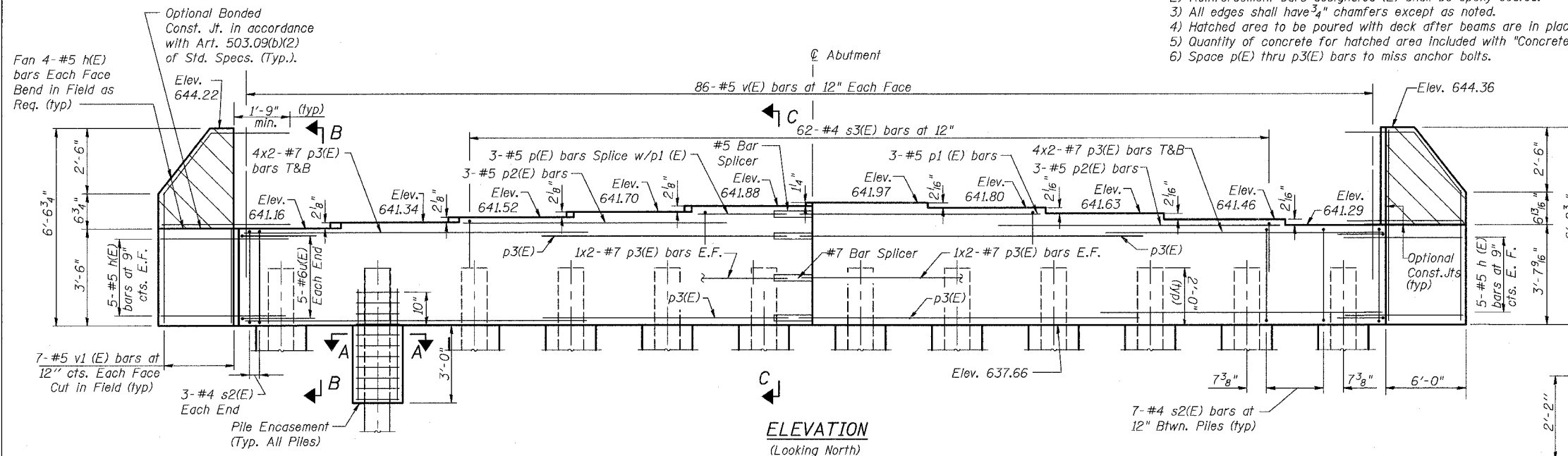


F.A.P. RTE.	SECTION	COUNTY	TOTAL SHEETS	SHEET NO.
374	G-B-1-1	COOK	15	15A
STA.	TO STA.			
FED. ROAD DIST. NO.	ILLINOIS	FED. AID PROJECT		

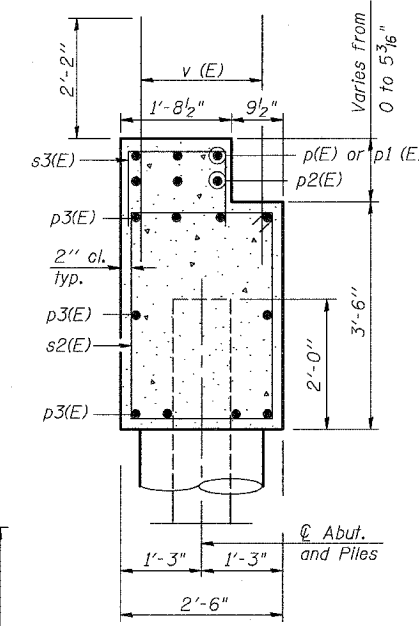
CONTRACT NO. 60D59

- Notes: 1) Pour steps monolithically with cap.  
 2) Reinforcement bars designated (E) shall be epoxy coated.  
 3) All edges shall have 3/4" chamfers except as noted.  
 4) Hatched area to be poured with deck after beams are in place.  
 5) Quantity of concrete for hatched area included with "Concrete Superstructure" on Sheet S-13.  
 6) Space p(E) thru p3(E) bars to miss anchor bolts.

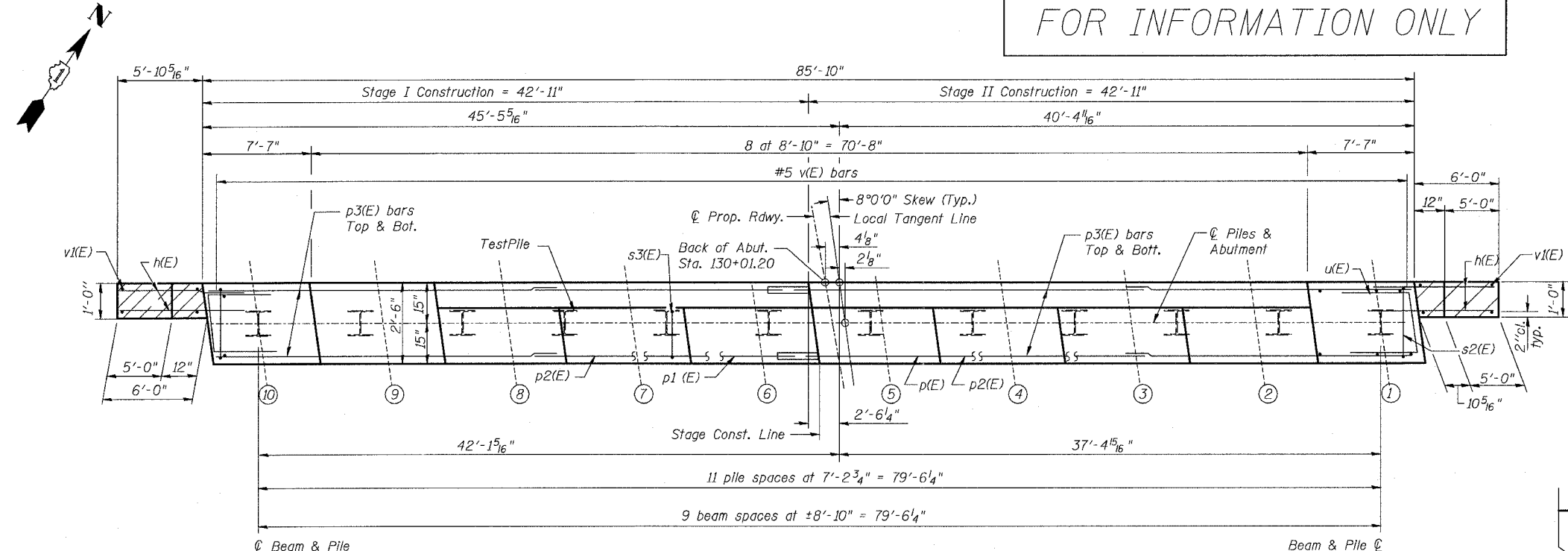


ELEVATION  
(Looking North)

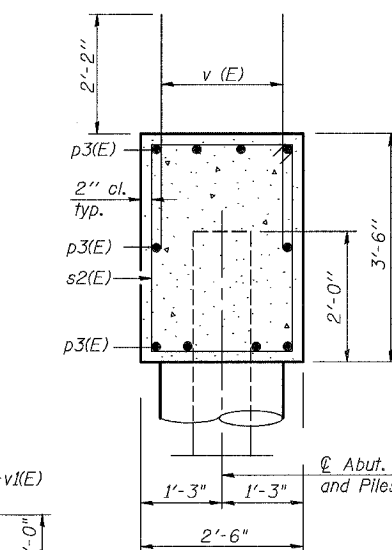
FOR INFORMATION ONLY



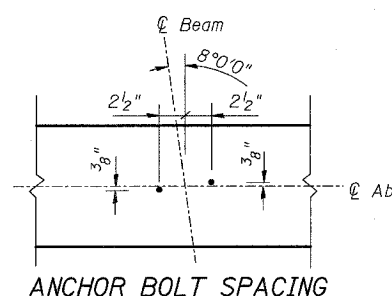
SECTION C-C  
ABUTMENT



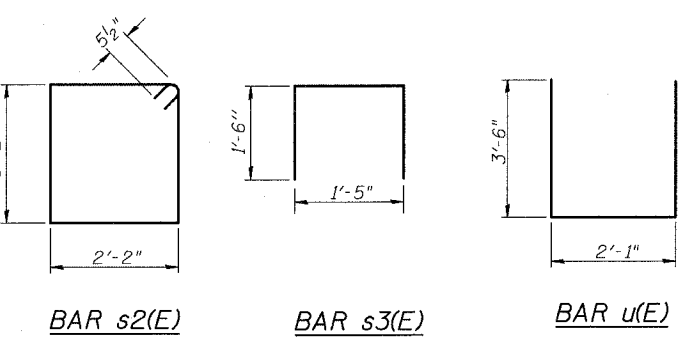
PLAN



SECTION B-B  
ABUTMENT

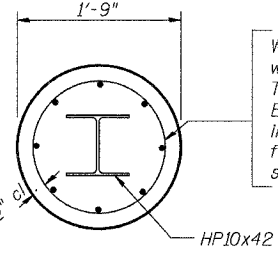


ANCHOR BOLT SPACING



PILE DATA

Type: Steel HP10x42 with Metal Shoes  
 Capacity: 55 Tons  
 Driven to 83 Ton Bearing  
 Est. Length: 58 Feet  
 No. Required: 11  
 Plus 1 Test Pile



SECTION A-A  
PILE ENCASEMENT DETAIL

BILL OF MATERIAL

Bar	No.	Size	Length	Shape
h(E)	36	#5	8'-3"	—
p(E)	3	#5	8'-6"	—
p1(E)	3	#5	17'-4"	—
p2(E)	6	#5	19'-10"	—
p3(E)	40	#7	23'-0"	—
s2(E)	83	#4	11'-7"	□
s3(E)	62	#4	4'-5"	□
u(E)	10	#6	9'-1"	□
v(E)	172	#5	3'-3"	—
v1(E)	28	#5	6'-5"	—
Concrete Structures	Cu. Yd.	36.5		
Reinforcement Bars, Epoxy Coated	Pound	4130		
Furnishing Steel Piles HP 10x42	Foot	638		
Driving Steel Piles	Foot	638		
Metal Shoes	Each	12		
Test Pile Steel HP 10x42	Each	1		

STV Incorporated  
 Engineers/Architects/Planners/Construction Managers  
 200 W. Monroe Street, Suite 1650  
 Chicago, IL 60606-5015  
 312/533-0655, FAX 312/533-0661

REVISIONS	
NAME	DATE

ILLINOIS DEPARTMENT OF TRANSPORTATION  
 ILLINOIS ROUTE 21  
 MILWAUKEE AVE. OVER DES PLAINES RIVER  
 F.A.P. ROUTE 374 SECTION G-B-1-1  
 COOK COUNTY, SN 016-6566  
 NORTH ABUTMENT  
 DESIGN BY: AWH DRAWN BY: AWH  
 DATE: 8/29/07 CHECKED BY: BTO CHECKED BY: JAW