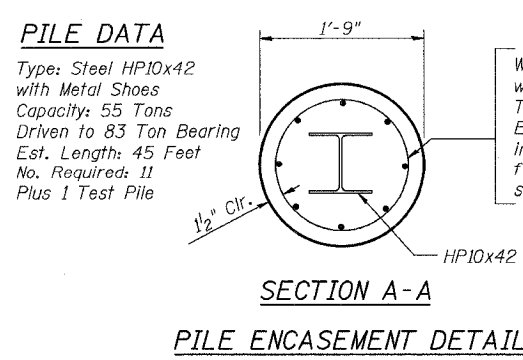
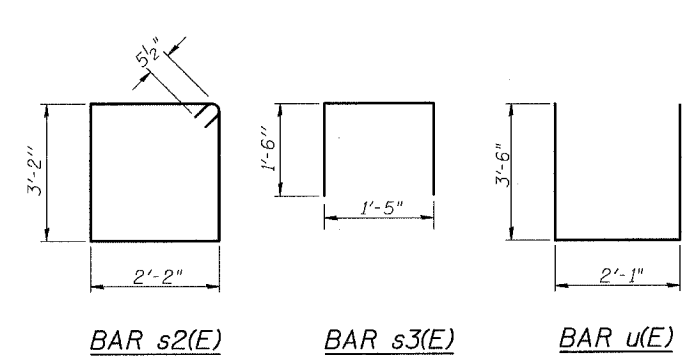
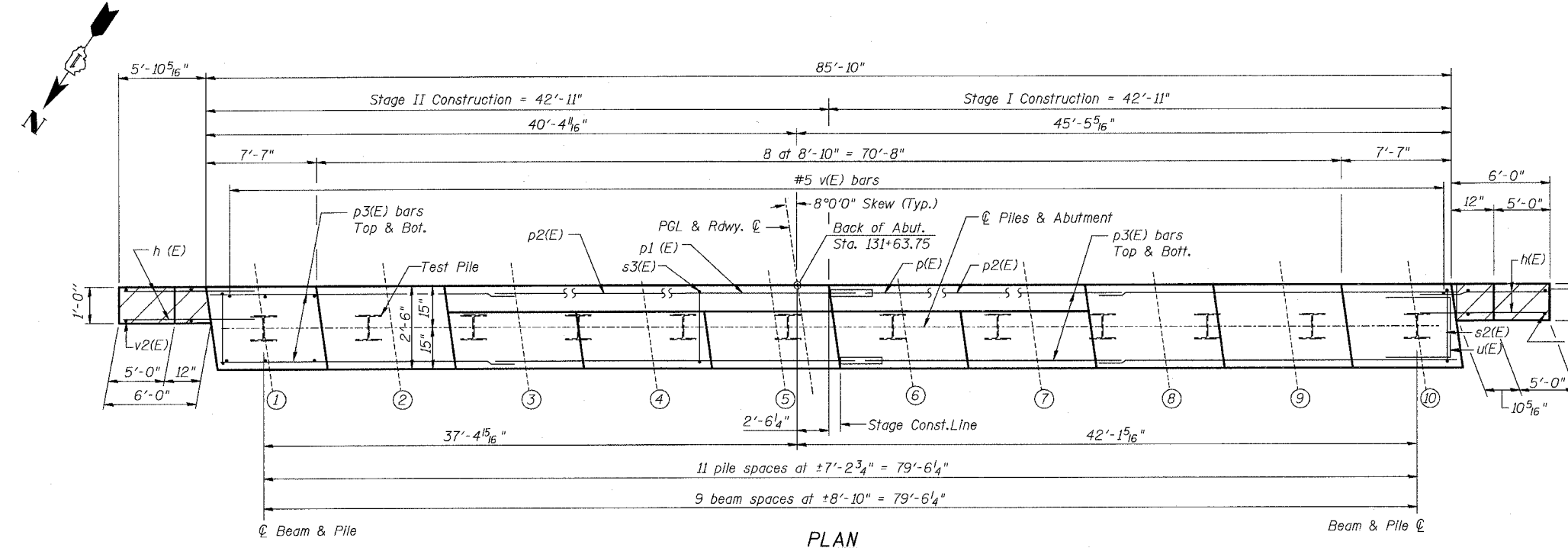
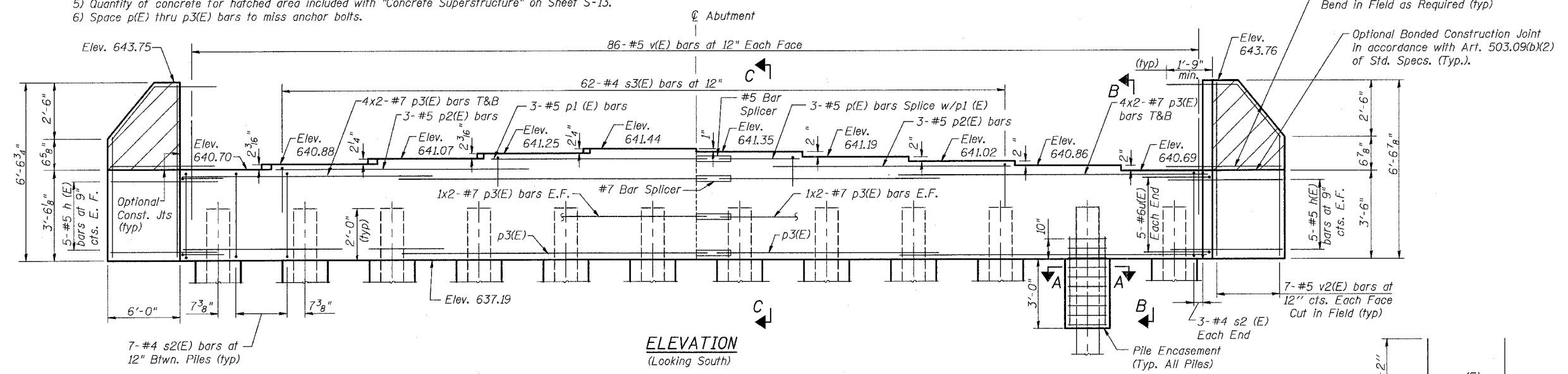


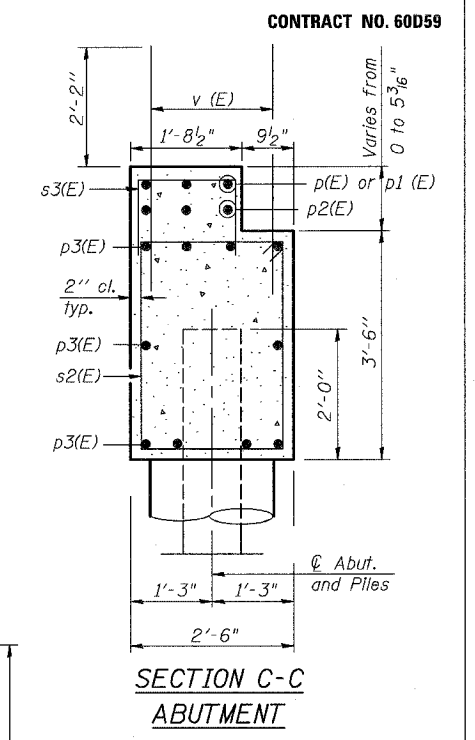
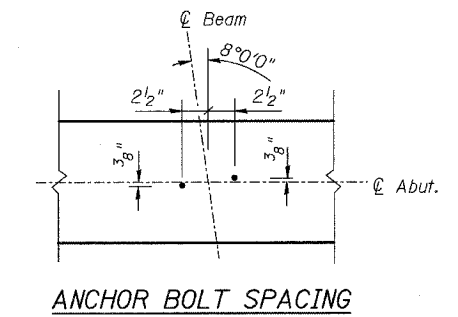
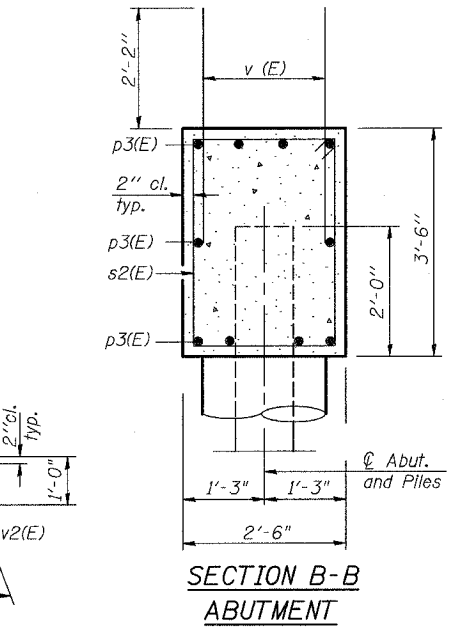
F.A.P. RTE.	SECTION	COUNTY	TOTAL SHEETS	SHEET NO.
374	G-B-1-1	COOK	15	15B
STA.	TO STA.			
FED. ROAD DIST. NO.	ILLINOIS	FED. AID PROJECT		

- Notes:
- 1) Four steps monolithically with cap.
 - 2) Reinforcement bars designated (E) shall be epoxy coated.
 - 3) All edges shall have $\frac{3}{4}$ " chamfers except as noted.
 - 4) Hatched area to be poured with deck after beams are in place.
 - 5) Quantity of concrete for hatched area included with "Concrete Superstructure" on Sheet S-13.
 - 6) Space p(E) thru p3(E) bars to miss anchor bolts.



FOR INFORMATION ONLY

STV Incorporated
 Engineers/Architects/Planners/Construction Managers
 200 W. Monroe Street, Suite 1650
 Chicago, IL 60606-5015
 312/953-0655, FAX 312/953-0661



BILL OF MATERIAL

Bar	No.	Size	Length	Shape
h(E)	36	#5	8'-3"	—
p(E)	3	#5	8'-6"	—
p1(E)	3	#5	17'-4"	—
p2(E)	6	#5	19'-10"	—
p3(E)	40	#7	23'-0"	—
s2(E)	83	#4	11'-7"	□
s3(E)	62	#4	4'-5"	□
u(E)	10	#6	9'-1"	□
v(E)	172	#5	3'-3"	—
v2(E)	28	#5	6'-3"	—
Concrete Structures		Cu. Yd.	36.5	
Reinforcement Bars, Epoxy Coated		Pound	4130	
Structure Excavation		Cu. Yd.	137	
Furnishing Steel Piles HP 10x42		Foot	495	
Driving Steel Piles		Foot	495	
Metal Shoes		Each	12	
Test Pile Steel HP 10x42		Each	1	

REVISIONS

NAME	DATE

ILLINOIS DEPARTMENT OF TRANSPORTATION
 ILLINOIS ROUTE 21
 MILWAUKEE AVE. OVER DES PLAINES RIVER
 F.A.P. ROUTE 374 SECTION G-B-1-1
 COOK COUNTY, SN 016-6566
 SOUTH ABUTMENT
 DESIGN BY: AWH DRAWN BY: AWH
 DATE: 8/29/07 CHECKED BY: BTO CHECKED BY: JAW