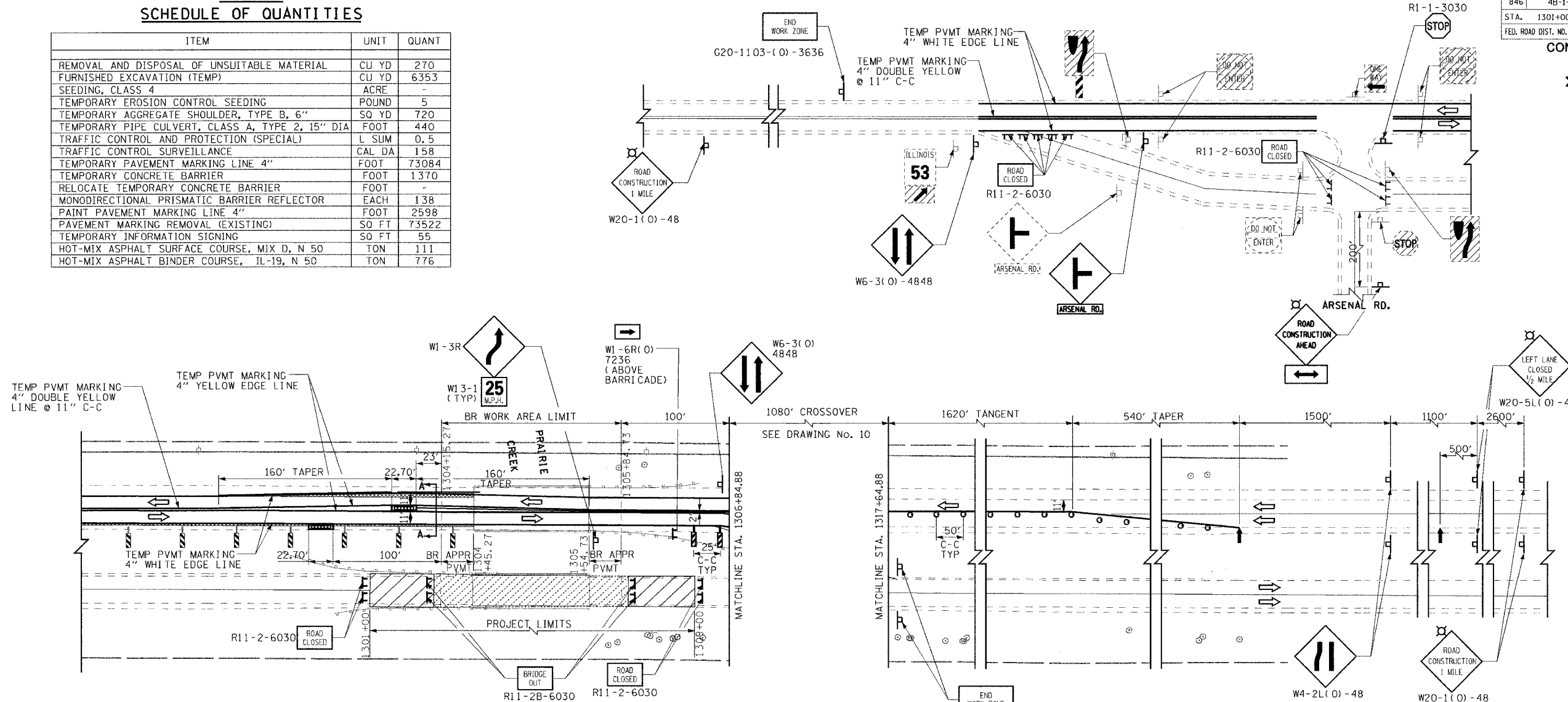
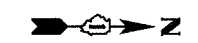


**STAGE I  
SCHEDULE OF QUANTITIES**

ITEM	UNIT	QUANT
REMOVAL AND DISPOSAL OF UNSUITABLE MATERIAL	CU YD	270
FURNISHED EXCAVATION (TEMP)	CU YD	6353
SEEDING, CLASS 4	ACRE	-
TEMPORARY EROSION CONTROL SEEDING	POUND	5
TEMPORARY AGGREGATE SHOULDER, TYPE B, 6"	SQ YD	720
TEMPORARY PIPE CULVERT, CLASS A, TYPE 2, 15" DIA	FOOT	440
TRAFFIC CONTROL AND PROTECTION (SPECIAL)	L SUM	0.5
TRAFFIC CONTROL SURVEILLANCE	CAL DA	158
TEMPORARY PAVEMENT MARKING LINE 4"	FOOT	73084
TEMPORARY CONCRETE BARRIER	FOOT	1370
RELOCATE TEMPORARY CONCRETE BARRIER	FOOT	-
MONODIRECTIONAL PRISMATIC BARRIER REFLECTOR	EACH	138
PAINT PAVEMENT MARKING LINE 4"	FOOT	2598
PAVEMENT MARKING REMOVAL (EXISTING)	SQ FT	73522
TEMPORARY INFORMATION SIGNING	SQ FT	55
HOT-MIX ASPHALT SURFACE COURSE, MIX D, N 50	TON	111
HOT-MIX ASPHALT BINDER COURSE, IL-19, N 50	TON	776

F.A.P. RTE.	SECTION	COUNTY	TOTAL SHEETS	SHEET NO.
846	4B-1-R	WILL	87	8
STA. 1301+00		TO STA. 1309+00		
FED. ROAD DIST. NO. 1 ILLINOIS FED. AID PROJECT				

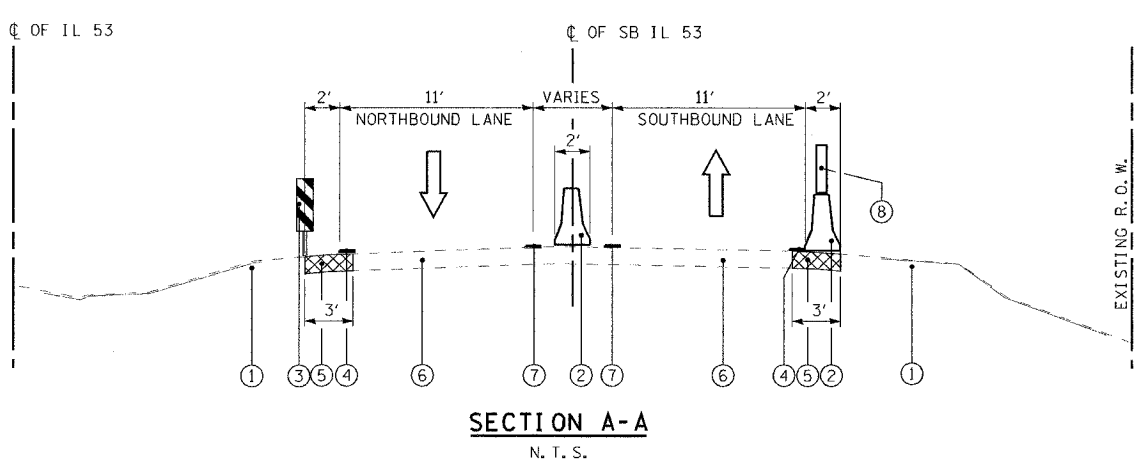
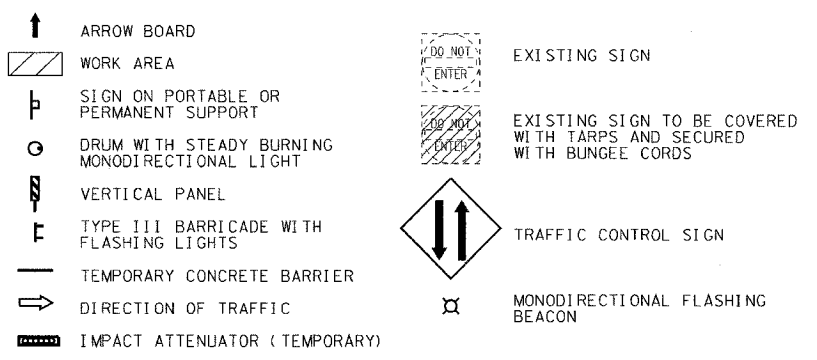
CONTRACT No. 62269



**STAGE I  
CONSTRUCTION AND TRAFFIC CONTROL AND PROTECTION**

**NOTE**

- FOR TRAFFIC CONTROL NOTES SEE SHT. No. 9.
- FOR STEEL PLATE BEAM GUARD RAIL REMOVAL, SEE SHT. No. 12.
- 1st TWO WARNING SIGNS NEED MONODIRECTIONAL FLASHING BEACONS (TYP).



**LEGEND**

- EXISTING TOP SOIL.
- CONCRETE BARRIER.
- VERTICAL PANEL.
- TEMPORARY PAVEMENT MARKING 4" WHITE EDGE LINE.
- TEMPORARY PAVEMENT.
- EXISTING PAVEMENT.
- TEMPORARY PAVEMENT MARKING 4" YELLOW EDGE LINE.
- GLARE SCREEN

REVISIONS	
NAME	DATE

ILLINOIS DEPARTMENT OF TRANSPORTATION  
IL RTE 53 OVER PRAIRIE CREEK

SUGGESTED STAGES  
OF CONSTRUCTION AND  
TRAFFIC CONTROL  
NORTHBOUND

SCALE: 1"=50'  
DATE: AUGUST 2007

DRAWN BY: JLA/RM/FZ  
CHECKED BY: MK/SMK