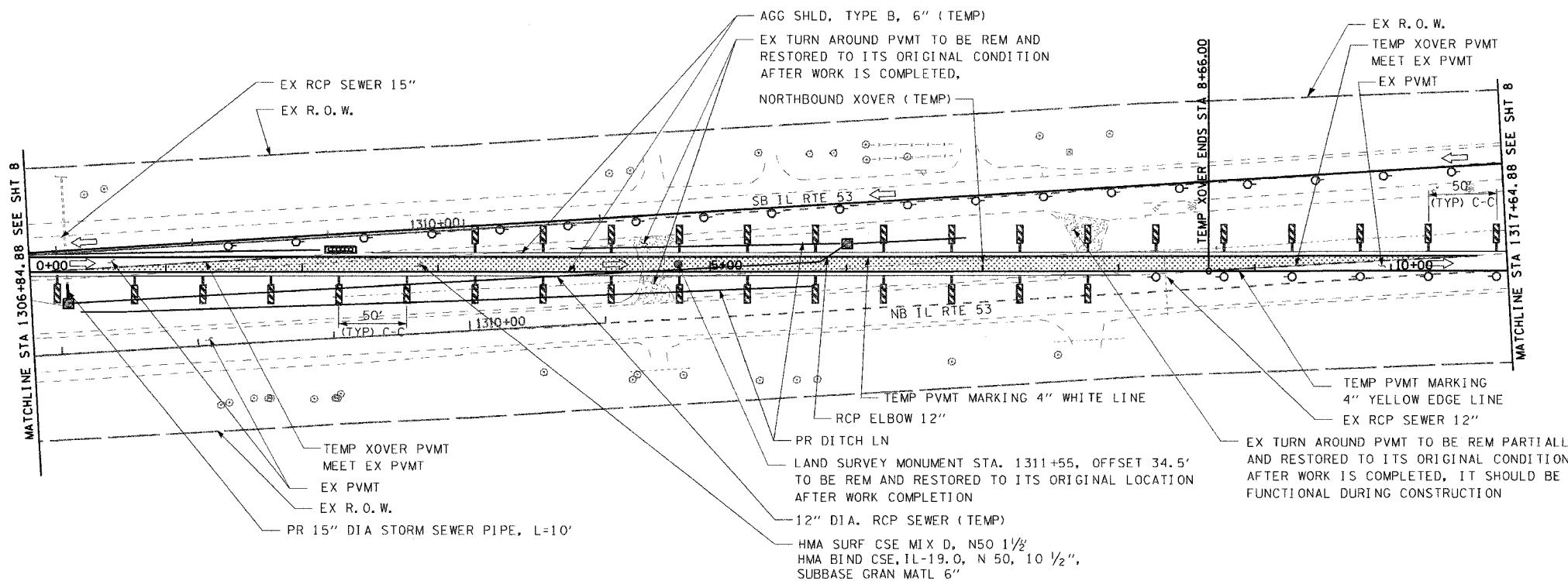
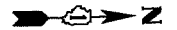


F.A.P. RTE.	SECTION	COUNTY	TOTAL SHEETS	SHEET NO.
846	4B-1-R	WILL	87	10
STA. 1301+00		TO STA. 1309+00		
FED. ROAD DIST. NO. 1 ILLINOIS FED. AID PROJECT				

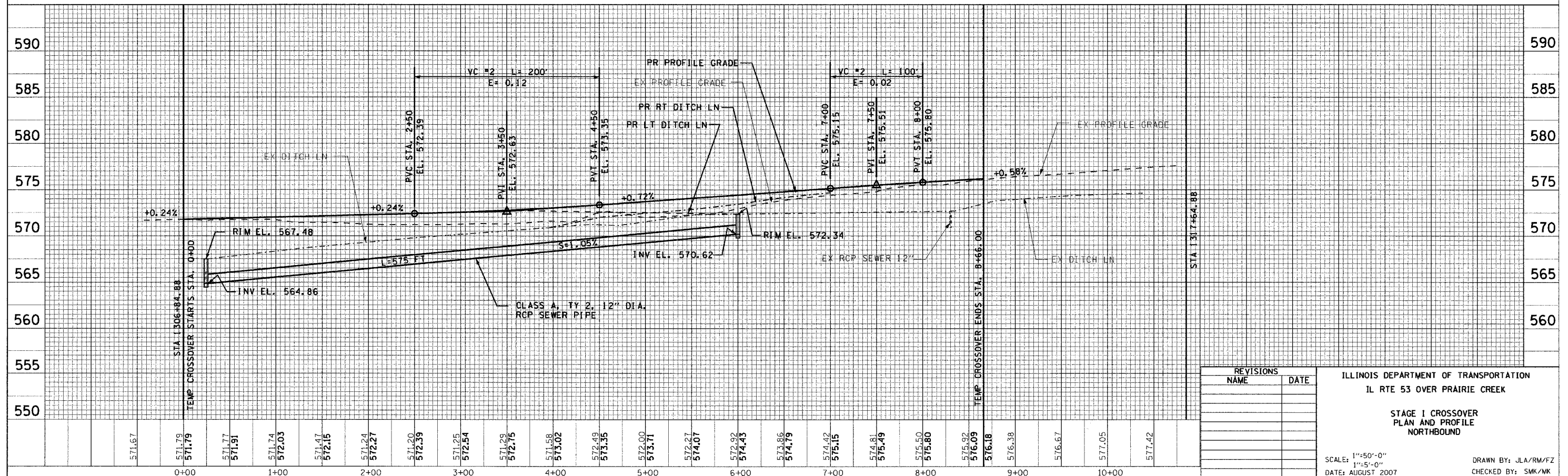
CONTRACT No. 62269



LEGEND:

- SIGN ON PORTABLE OR PERMANENT SUPPORT
- DRUM WITH STEADY BURNING MONODIRECTIONAL LIGHT
- VERTICAL PANEL
- TYPE III BARRICADE WITH FLASHING LIGHTS
- TEMPORARY CONCRETE BARRIER
- DIRECTION OF TRAFFIC
- IMPACT ATTENUATOR
- FLOW LINE
- INLET SP WITH SILT FILTRATION SEE DETAIL SHT No 17

STAGE I-CROSSOVER PLAN



REVISIONS	
NAME	DATE

ILLINOIS DEPARTMENT OF TRANSPORTATION
 IL RTE 53 OVER PRAIRIE CREEK

**STAGE I CROSSOVER
 PLAN AND PROFILE
 NORTHBOUND**

SCALE: 1"=50'-0"
 1"=5'-0"
 DATE: AUGUST 2007

DRAWN BY: JLA/RM/FZ
 CHECKED BY: SMK/MK