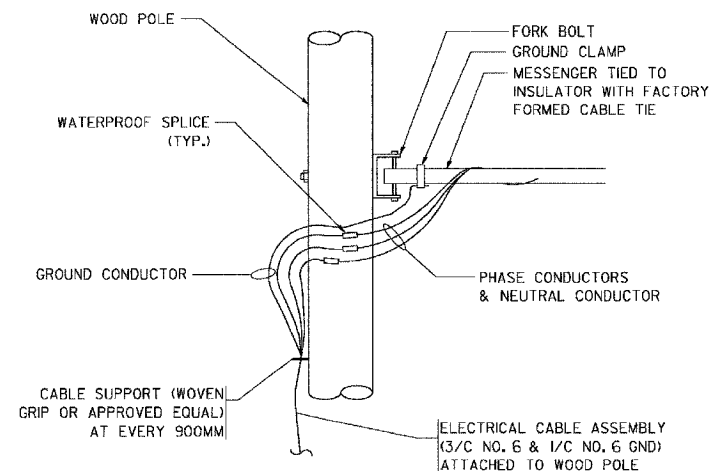
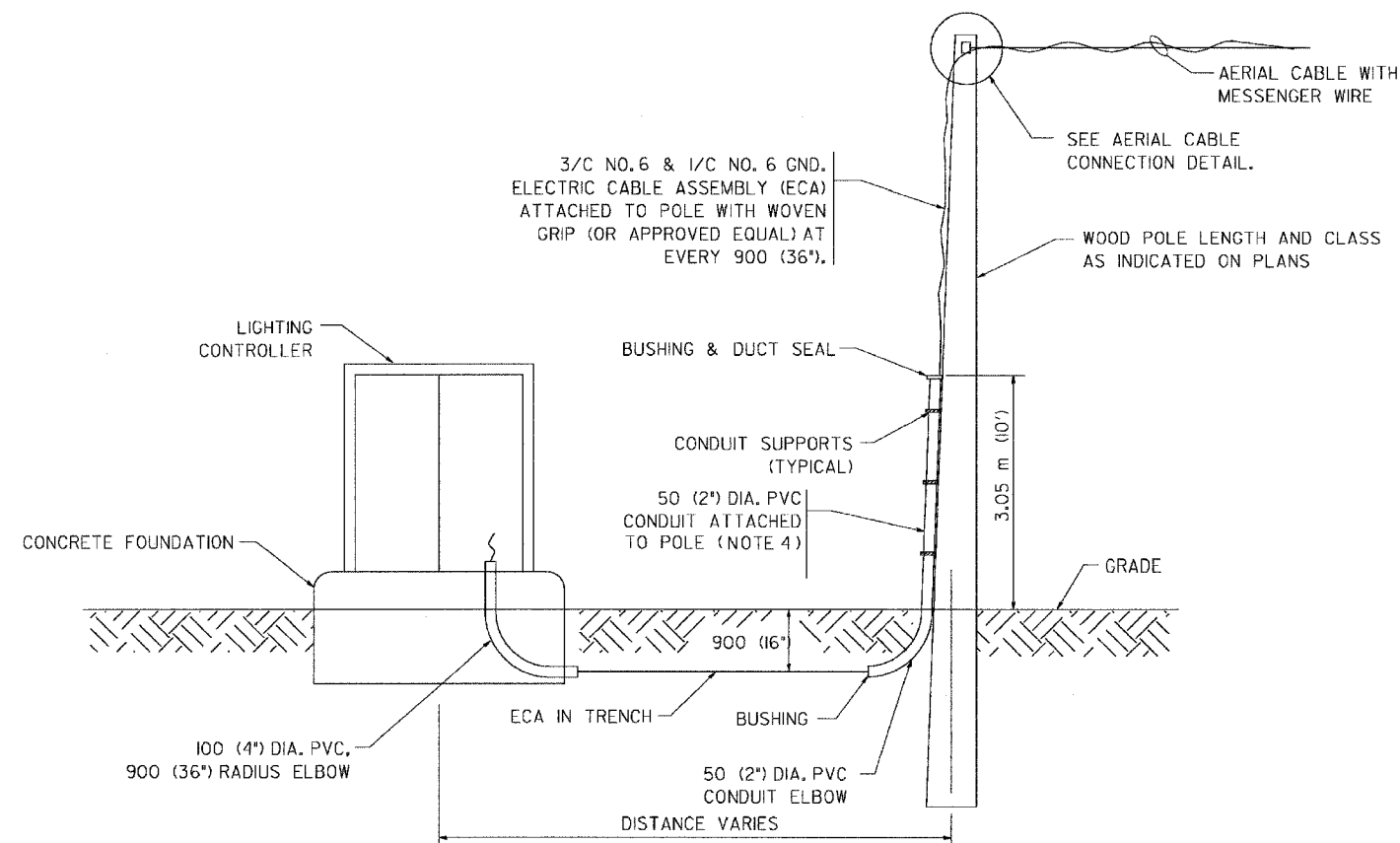


F.A.P. RTE.	SECTION	COUNTY	TOTAL SHEETS	SHEET NO.
846	4B-1-R	WILL	87	21
STA. 1301+00	TO STA. 1309+00			
FED. ROAD DIST. NO. 1	ILLINOIS	FED. AID PROJECT		

CONTRACT No. 62269



AERIAL CABLE CONNECTION DETAIL  
N.T.S.



WOOD POLE TO LIGHTING CONTROLLER  
WIRING CONNECTION DETAIL  
N.T.S.

NOTES:

1. ALL DIMENSIONS IN MILLIMETERS (INCHES) UNLESS OTHERWISE INDICATED.
2. SEE PROPOSED LIGHTING PLAN FOR CONDUIT, CABLE AND ROUTING.
3. THE CONTRACTOR SHALL PROVIDE INTERMEDIATE SUPPORTS TO MAINTAIN MINIMUM CLEARANCES. REFER TO AERIAL AERIAL CABLE ATTACHED TO STRUCTURE DETAIL.
4. COST OF SPLICES, MOUNTING HARDWARE AND CONDUIT ATTACHED TO SUPPORT POLE SHALL BE INCLUDED IN THE UNIT PRICE FOR AERIAL CABLE.

BE-801

E-04

REVISIONS	
NAME	DATE

ILLINOIS DEPARTMENT OF TRANSPORTATION  
IL RTE 53 OVER PRAIRIE CREEK  
TEMPORARY AERIAL CABLE  
INSTALLATION

**DEI** DELTA ENGINEERING, INC.  
CONSULTING ENGINEERS, CONSTRUCTION MANAGERS, SURVEYORS  
111 West Jackson Blvd., Suite 310 Chicago, IL 60604-2001

SCALE: N O N E  
DATE: AUGUST 2007

DRAWN BY:  
CHECKED BY: