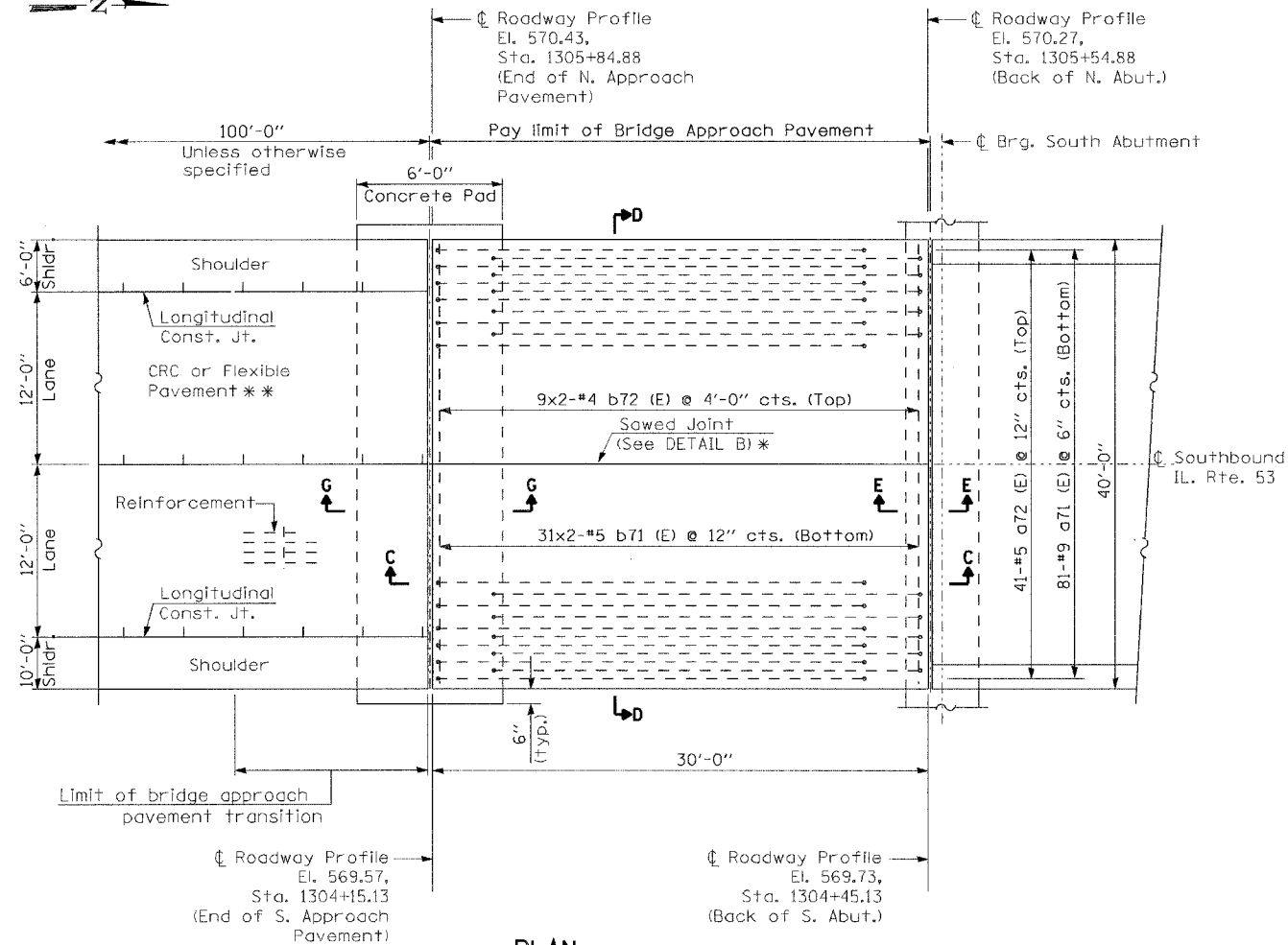


STATE OF ILLINOIS  
DEPARTMENT OF TRANSPORTATION

ROUTE NO.	SECTION	COUNTY	TOTAL SHEETS	SHEET NO.
F. A. R. 846	4-RB	WILL	87	25
FED. ROAD DIST. NO. 7	ILLINOIS	FED. AID PROJECT-		

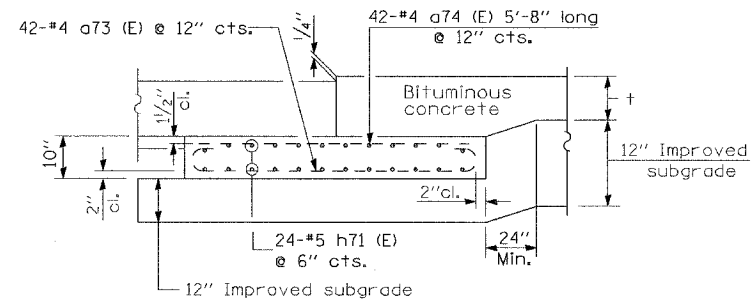
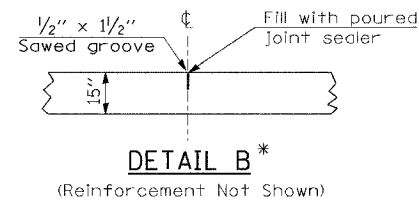
CONTRACT NO. 62269



**PLAN**

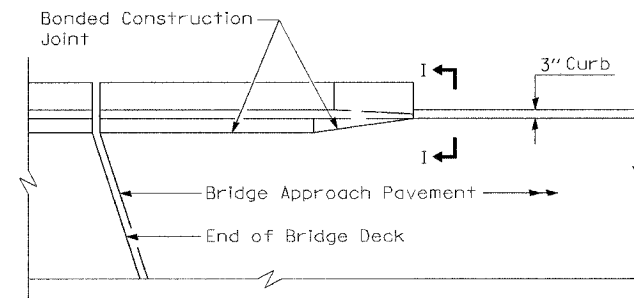
SOUTH APPROACH PAVEMENT SHOWN  
NORTH APPROACH PAVEMENT SIMILAR  
(OPPOSITE HAND)  
(See Roadway Plans for Details)

- \* Saw  $\perp$  or lane edge if poured two or more lane widths at a time.
- \*\* Omit Reinforcement, tie bars and Long. sawed Jt. for Flexible Pavement.

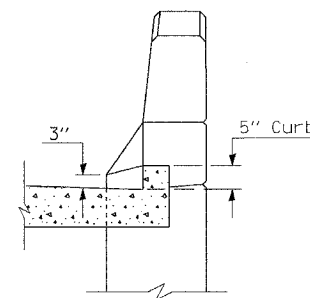


**SECTION G-G - FLEXIBLE PAVEMENT**  
(Showing reinforcement)

DESIGNED	NDS/GMK
CHECKED	MTP/SMK/GBC
DRAWN	NDS/DCB
CHECKED	SMK/GBC



**PARAPET TO CURB TRANSITION  
PILE BENT ABUTMENT**



**SECTION I - I**

**BILL OF MATERIAL**

Bar	No.	Size	Length	Shape
a71 (E)	162	#9	29'-6"	U
a72 (E)	82	#5	29'-6"	—
a73 (E)	84	#4	6'-8"	U
a74 (E)	84	#5	5'-8"	—
b71 (E)	124	#5	20'-6"	—
b72 (E)	36	#4	20'-6"	—
h71 (E)	48	#5	5'-8"	—
Reinforcement Bars, Epoxy Coated			Pound	22,860
Bridge Approach Pavement			SQ. YD.	270

Reinforcement bars designated (E) shall be epoxy coated.

Bars indicated thus 31x2-#5 etc. indicates 31 line of bars with 2 lengths per line.

Bill of Material is shown for information only.

**GENERAL NOTES**

- THICKNESS - "t" = Thickness of Pavement.
- See Standard 421001 for reinforcement details not shown.
- See Standard 421001 for joint details not shown.
- All dimensions are in (Inches) unless otherwise shown.

ILLINOIS DEPARTMENT OF TRANSPORTATION

**BRIDGE APPROACH PAVEMENT  
NORTHBOUND - SHEET 1 OF 2  
FAP 846  
NB IL. ROUTE 53 OVER PRAIRIE CREEK  
STATION 1305+00 SECTION 4-RB  
WILL COUNTY  
STRUCTURE NO. 099-0090**

SCALE: NONE  
DATE: AUGUST 2007

**DELTA ENGINEERING INC.**  
CONSULTING ENGINEERS, CHICAGO, ILLINOIS