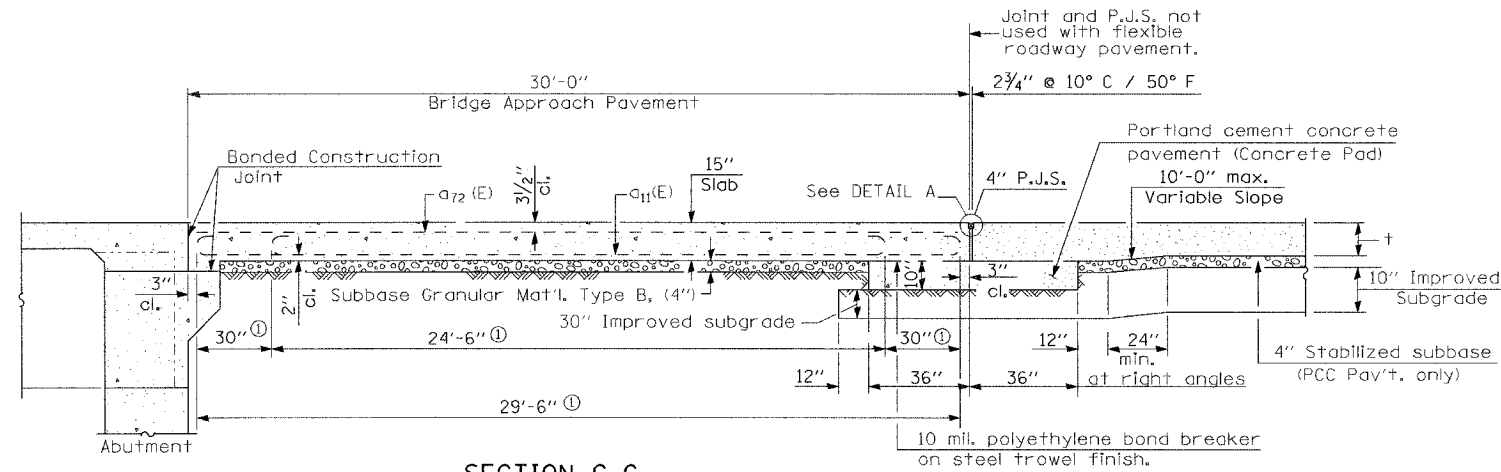


STATE OF ILLINOIS
DEPARTMENT OF TRANSPORTATION

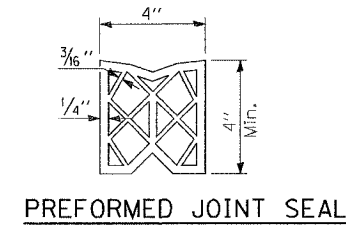
ROUTE NO.	SECTION	COUNTY	TOTAL SHEETS	SHEET NO.
F. A. P. 846	4-RB	WILL	87	26
FED. ROAD DIST. NO. 7	ILLINOIS	FED. AID PROJECT		

CONTRACT NO. 62269

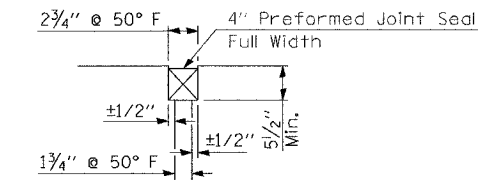


SECTION C-C

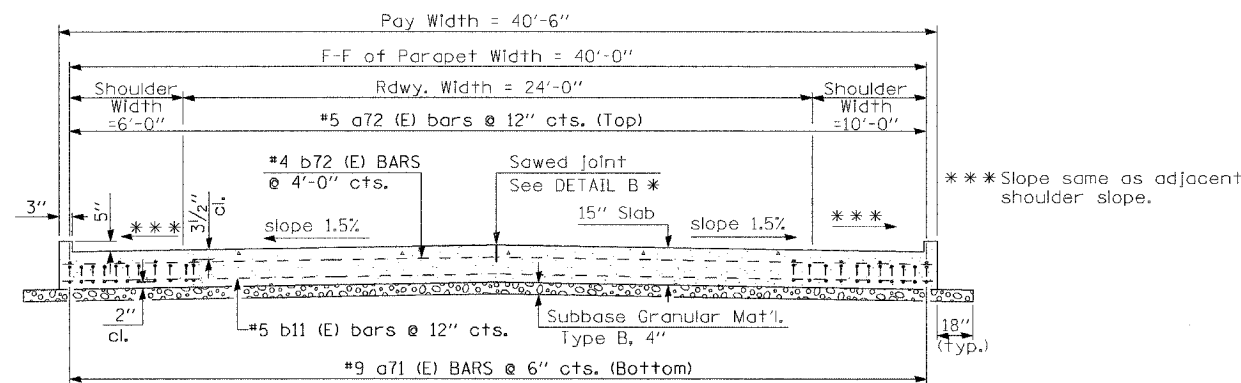
Ⓛ Stagger #9 a₁₁(E) bars as shown on plan - full width



PREFORMED JOINT SEAL

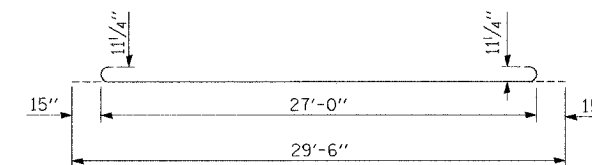


DETAIL A

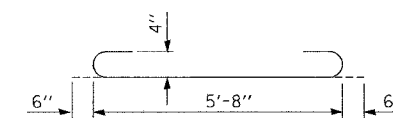


SECTION D-D

(See Plan for Dimensions not shown)
All reinforcement bars shall be epoxy coated.



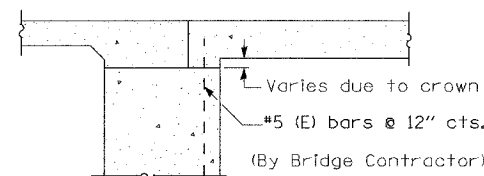
BAR a₇₁ (E)



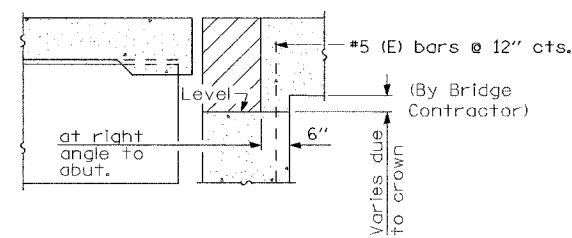
BAR a₇₃ (E)

DESIGN STRESSES

f_y = (60,000 p.s.i.)
f'c = (3,500 p.s.i.)
n = 8.5

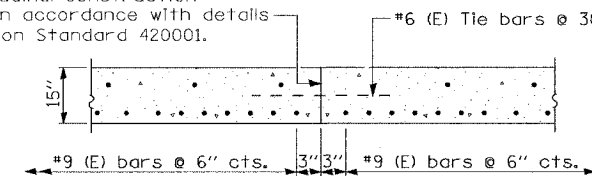


SECTION E-E
(Integral Abutments)



SECTION E-E
(Jointed Abutments)

Longitudinal Construction Joint in accordance with details shown on Standard 420001.



OPTIONAL LONGITUDINAL
CONSTRUCTION JOINT

As approved by the Engineer, the Contractor may elect to reduce the widths of pour by use of the Optional Longitudinal Construction Joint shown. Joints shall be located at the edge of a traffic lane.

DESIGNED	NDS/GMK
CHECKED	MTP/SMK/GBC
DRAWN	NDS/DCB
CHECKED	SMK/GBC

ILLINOIS DEPARTMENT OF TRANSPORTATION
BRIDGE APPROACH PAVEMENT
NORTHBOUND - SHEET 2 OF 2
FAP 846
NB IL. ROUTE 53 OVER PRAIRIE CREEK
STATION 1305+00 SECTION 4-RB
WILL COUNTY
STRUCTURE NO. 099-0090
SCALE: NONE
DATE: AUGUST 2007
DEI DELTA ENGINEERING INC.
CONSULTING ENGINEERS, CHICAGO, ILLINOIS.