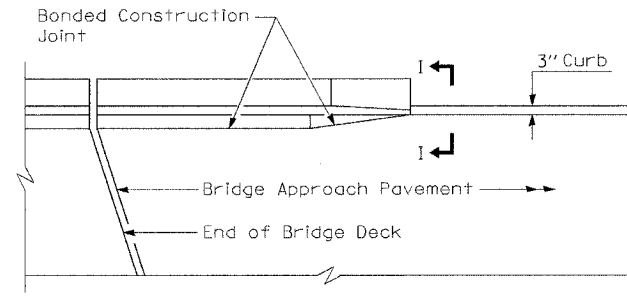
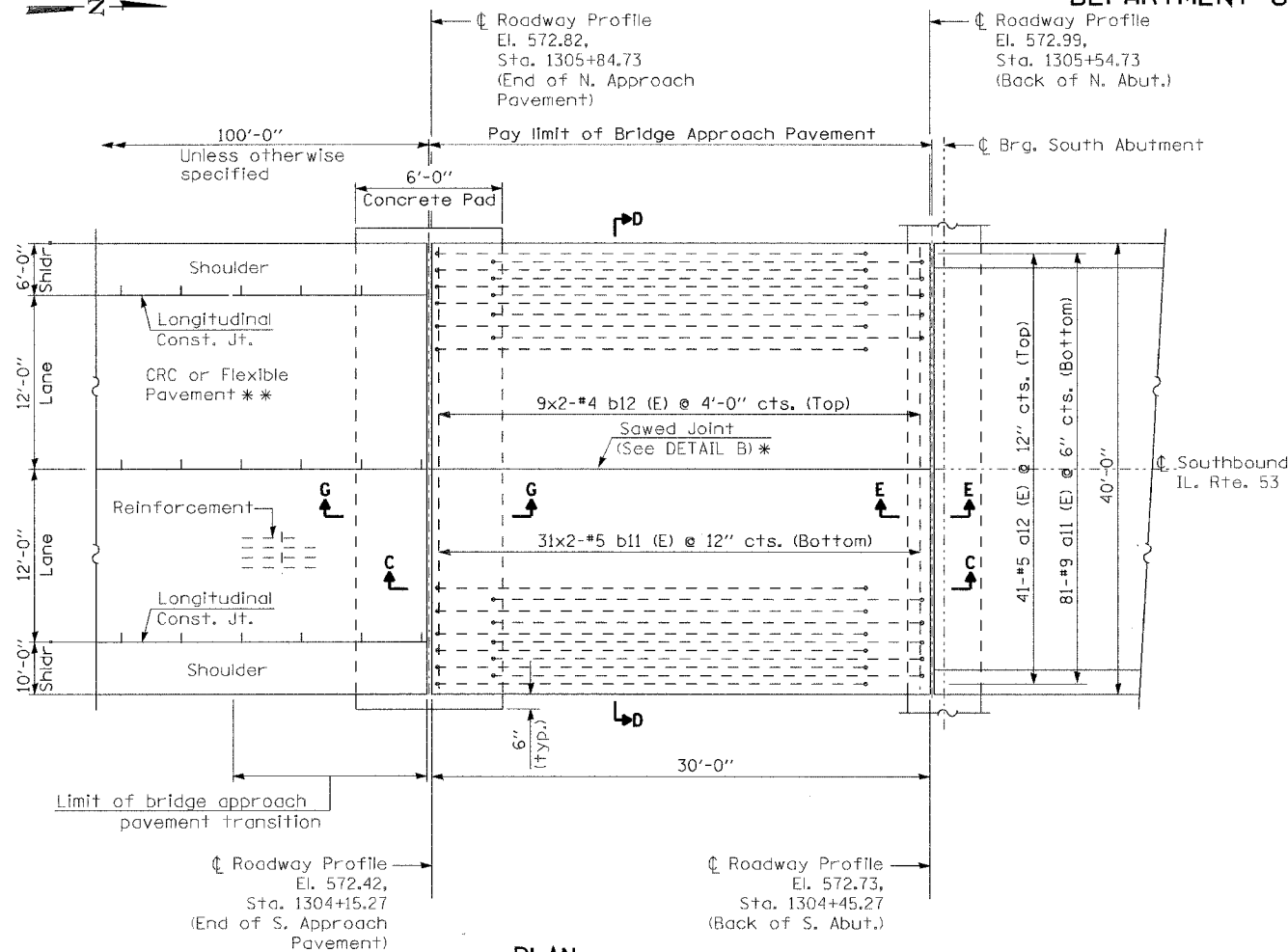


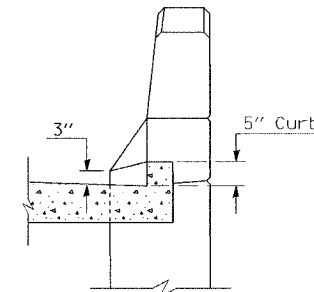
STATE OF ILLINOIS  
DEPARTMENT OF TRANSPORTATION

ROUTE NO.	SECTION	COUNTY	SHEET NO.	SHEET
F. A. P. 846	4B-1-R	WILL	87	27
FED. ROAD DIST. NO. 7	ILLINOIS	FED. AID PROJECT		

CONTRACT NO. 62269



PARAPET TO CURB TRANSITION  
PILE BENT ABUTMENT



SECTION I - I

BILL OF MATERIAL

Bar	No.	Size	Length	Shape
a11 (E)	162	#9	29'-6"	U
a12 (E)	82	#5	29'-6"	—
a13 (E)	84	#4	6'-8"	U
a14 (E)	84	#5	5'-8"	—
b11 (E)	124	#5	20'-6"	—
b12 (E)	36	#4	20'-6"	—
h11 (E)	48	#5	5'-8"	—
Reinforcement Bars, Epoxy Coated			Pound	22,860
Bridge Approach Pavement			SQ. YD.	270

Reinforcement bars designated (E) shall be epoxy coated.

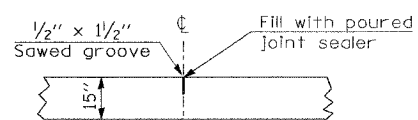
Bars indicated thus 31x2-#5 etc. indicates 31 line of bars with 2 lengths per line.

Bill of Material is shown for information only.

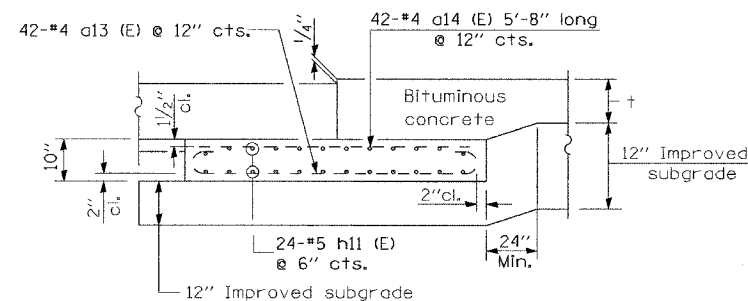
PLAN

SOUTH APPROACH PAVEMENT SHOWN  
NORTH APPROACH PAVEMENT SIMILAR  
(OPPOSITE HAND)  
(See Roadway Plans for Details)

- \* Saw  $\phi$  or lane edge if poured two or more lane widths at a time.
- \*\* Omit Reinforcement, tie bars and Long. sawed Jt. for Flexible Pavement.



DETAIL B\*  
(Reinforcement Not Shown)



SECTION G-G - FLEXIBLE PAVEMENT  
(Showing reinforcement)

GENERAL NOTES

- THICKNESS - "t" = Thickness of Pavement.
- See Standard 421001 for reinforcement details not shown.
- See Standard 421001 for joint details not shown.
- All dimensions are in (Inches) unless otherwise shown.

DESIGNED	NDS/GMK
CHECKED	MTP/SMK/GBC
DRAWN	NDS/GMK
CHECKED	SMK/GBC

ILLINOIS DEPARTMENT OF TRANSPORTATION  
BRIDGE APPROACH PAVEMENT  
SOUTHBOUND - SHEET 1 OF 2  
FAP 846  
SB IL. ROUTE 53 OVER PRAIRIE CREEK  
STATION 1305+00 SECTION 4B-1-R  
WILL COUNTY  
STRUCTURE NO. 099-0242  
SCALE: NONE  
DATE: AUGUST 2007  
DEI DELTA ENGINEERING INC.  
CONSULTING ENGINEERS, CHICAGO, ILLINOIS