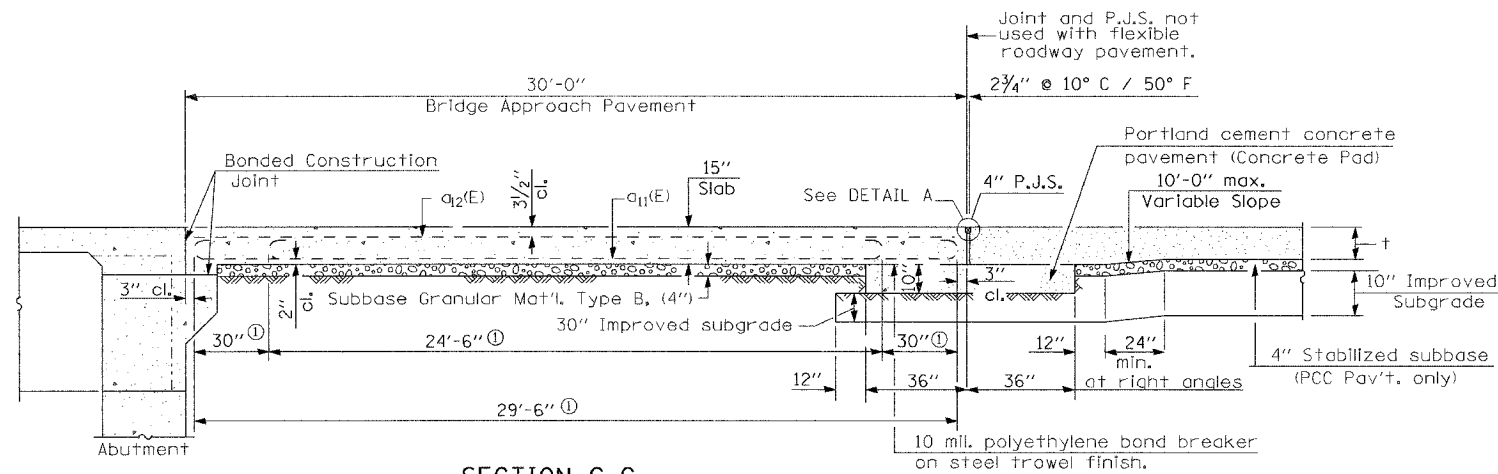


STATE OF ILLINOIS
DEPARTMENT OF TRANSPORTATION

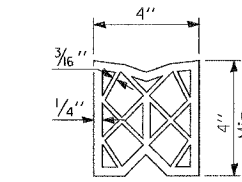
ROUTE NO.	SECTION	COUNTY	TOTAL SHEETS	SHEET NO.
F. A. R. 846	4B-1-R	WILL	87	28
FED. ROAD DIST. NO. 7	ILLINOIS	FED. AID PROJECT		

CONTRACT NO. 62269

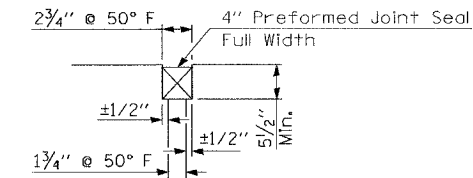


SECTION C-C

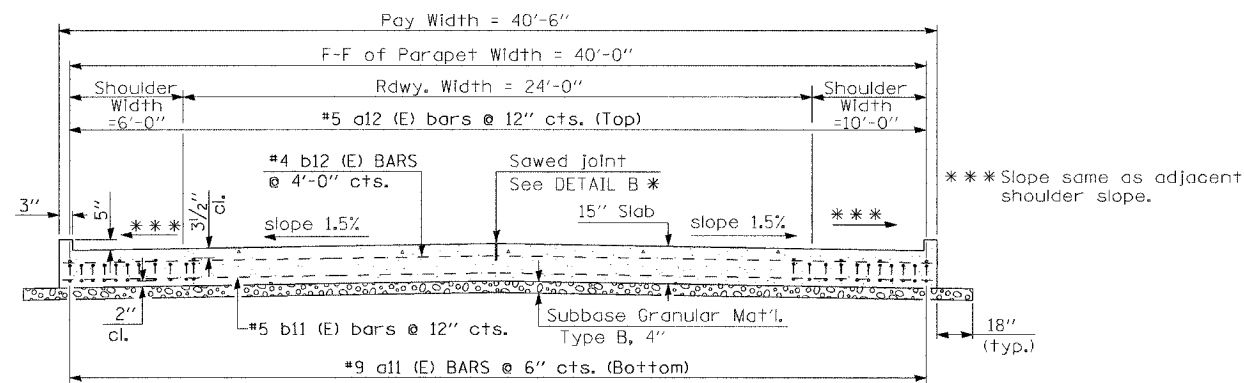
① Stagger #9 a11(E) bars as shown on plan - full width



PREFORMED JOINT SEAL

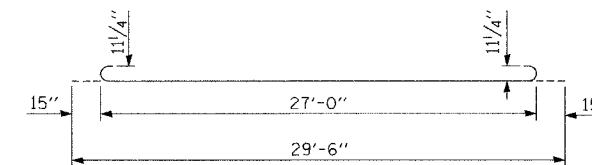


DETAIL A

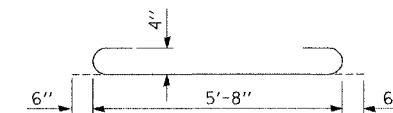


SECTION D-D

(See Plan for Dimensions not shown)
All reinforcement bars shall be epoxy coated.



BAR a11 (E)

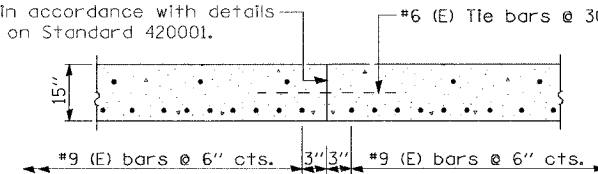


BAR a13 (E)

DESIGN STRESSES

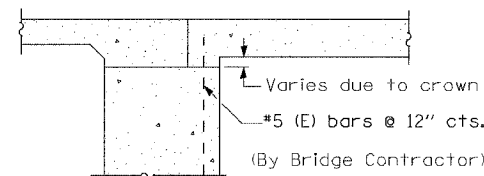
$f_y = (60,000 \text{ p.s.i.})$
 $f'_c = (3,500 \text{ p.s.i.})$
 $n = 8.5$

Longitudinal Construction Joint in accordance with details shown on Standard 420001.



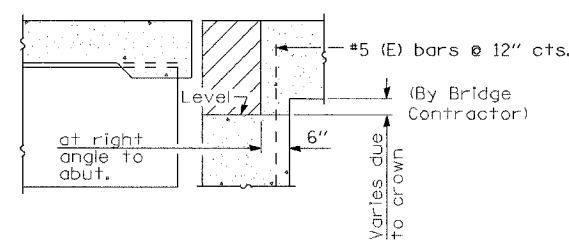
OPTIONAL LONGITUDINAL
CONSTRUCTION JOINT

As approved by the Engineer, the Contractor may elect to reduce the widths of pour by use of the Optional Longitudinal Construction Joint shown. Joints shall be located at the edge of a traffic lane.



SECTION E-E

(Integral Abutments)



SECTION E-E

(Jointed Abutments)

DESIGNED	NDS/GMK
CHECKED	MTP/SMK/GBC
DRAWN	NDS/GMK
CHECKED	SMK/GBC

ILLINOIS DEPARTMENT OF TRANSPORTATION

BRIDGE APPROACH PAVEMENT
SOUTHBOUND - SHEET 2 OF 2
FAP 846
SB IL. ROUTE 53 OVER PRAIRIE CREEK
STATION 1305+00 SECTION 4B-1-R
WILL COUNTY

STRUCTURE NO. 099-0242

SCALE: NONE
DATE: AUGUST 2007

DELTA ENGINEERING INC.
CONSULTING ENGINEERS, CHICAGO, ILLINOIS.