

STATE OF ILLINOIS
DEPARTMENT OF TRANSPORTATION

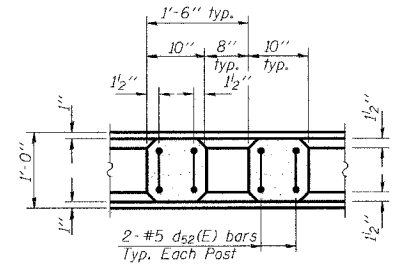
ROUTE NO.	SECTION	COUNTY	TOTAL SHEETS	SHEET NO.	SHEET NO. S7
F. A. R. 846	4-RB	WILL	87	35	SHEETS S20
FED. ROAD DIST. NO. 7	ILLINOIS	FED. AID PROJECT			

CONTRACT NO. 62269

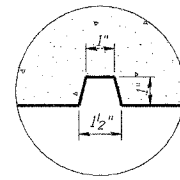
**SUPERSTRUCTURE & RAIL
BILL OF MATERIAL**

Bar	No.	Size	Length	Shape
a ₅₀ (E)	233	#5	41'-8"	—
a ₅₁ (E)	143	#5	41'-2"	—
a ₅₂ (E)	466	#6	6'-0"	—
a ₅₃ (E)	30	#6	8'-4"	—
a ₅₄ (E)	2	#6	41'-8"	—
a ₅₅ (E)	8	#7	41'-8"	—
b ₅₀ (E)	235	#5	23'-0"	—
b ₅₁ (E)	90	#6	18'-11"	—
b ₅₂ (E)	164	#5	28'-4"	—
d ₅₀ (E)	286	#5	2'-8"	—
d ₅₁ (E)	466	#5	4'-8"	—
x ₅₁ (E)	86	#5	5'-11"	—
Reinforcement Bars, Epoxy Coated		Pound	38,910	
Concrete Superstructure		Cu. Yds.	124	
Concrete Bridge Railing		Foot	213	

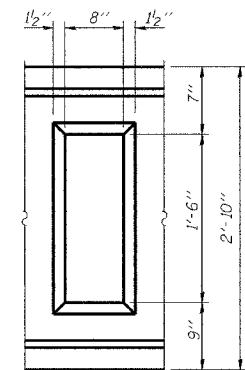
Bars indicated thus 1 x 2 - #2 etc. indicates 1 line of bars with 2 lengths per line.



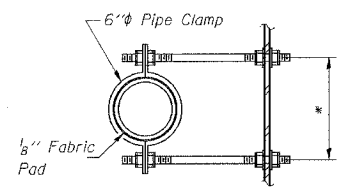
SECTION E-E



DETAIL A

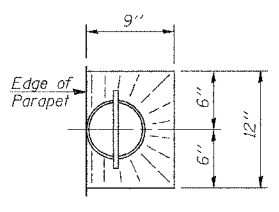


WINDOW DETAIL

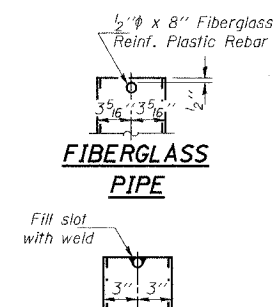


SECTION H-H

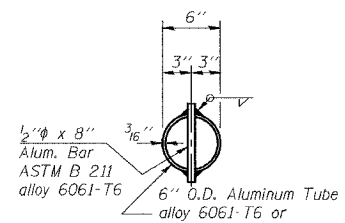
* Dimension as required by Pipe Clamp



TOP PLAN

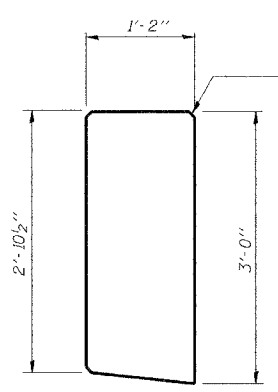


FIBERGLASS PIPE

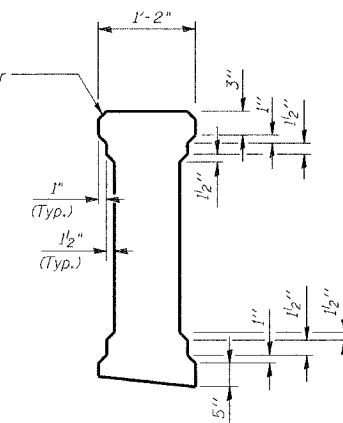


ALUMINUM TUBE

TOP PLAN (Showing Aluminum Tube)



PIER PILASTER JOINT



SPAN PILASTER JOINT

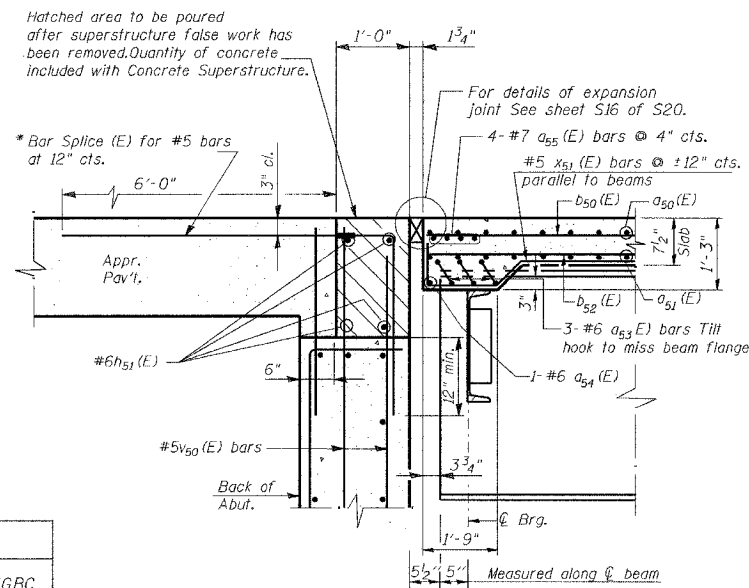
ALUMINUM JOINT DETAILS

Notes:

The exterior surfaces of the floor drains shall be painted with the finish coat as specified in the special provisions for Cleaning and Painting New Metal Structures. The exterior surfaces of the drains shall be cleaned according to Steel Structures Painting Council's Spec. SSPC-SP1 prior to painting.
Fiberglass pipe shall conform to ASTM D 2996, with short-time rupture strength hoop tensile stress of 30,000 p.s.i. minimum.

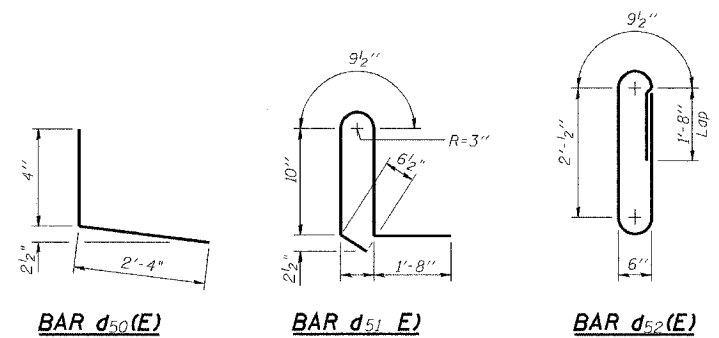
Hatched area to be poured after superstructure false work has been removed. Quantity of concrete included with Concrete Superstructure.

* Bar Splice (E) for #5 bars at 12" cts.



SECTION G-G

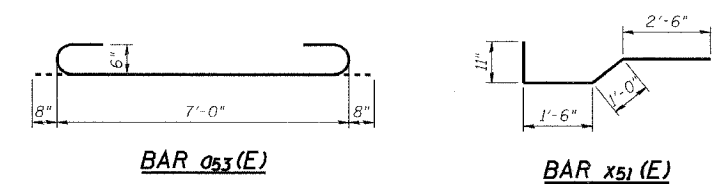
* Alternate with #4v50(E) bars. Place parallel to the beams.



BAR d₅₀(E)

BAR d₅₁(E)

BAR d₅₂(E)



BAR a₅₃(E)

BAR x₅₁(E)

MINIMUM BAR LAP (Parapet)

#5 bar = 1'-8"
#7 bar = 2'-8"

NOTE:

Work this sheet together with sheets S5, S6 and S17.

DESIGNED	NDS/GMK
CHECKED	MTP/SMK/GBC
DRAWN	NDS/DCB
CHECKED	SMK/GBC

ILLINOIS DEPARTMENT OF TRANSPORTATION
SUPERSTRUCTURE DETAILS AND CONCRETE BRIDGE RAILING
(Sheet 2 of 2)
FAP 846
NB IL. ROUTE 53 OVER PRAIRIE CREEK STATION 1305+00 SECTION 4-RB WILL COUNTY
STRUCTURE NO. 099-0090
SCALE: NONE
DATE: AUGUST 2007
DELTA ENGINEERING INC.
CONSULTING ENGINEERS, CHICAGO, ILLINOIS