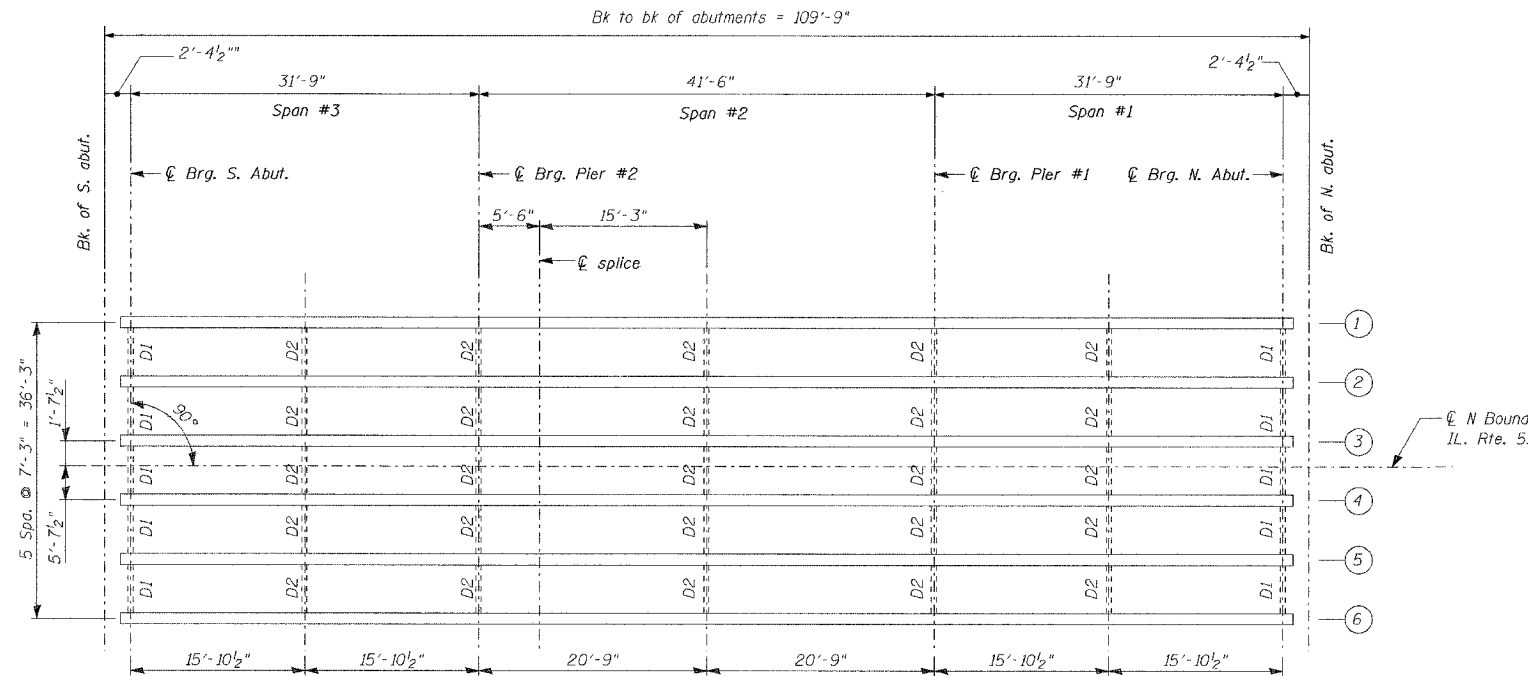


STATE OF ILLINOIS
DEPARTMENT OF TRANSPORTATION

ROUTE NO.	SECTION	COUNTY	TOTAL SPANS	SHEET NO.
F. A. P. 846	4-RB	WILL	87	36
FED. AID DIST. NO. 7	ILLINOIS	FED. AID PROJECT		

CONTRACT NO. 62269

SHEET NO. S8
SHEETS S20

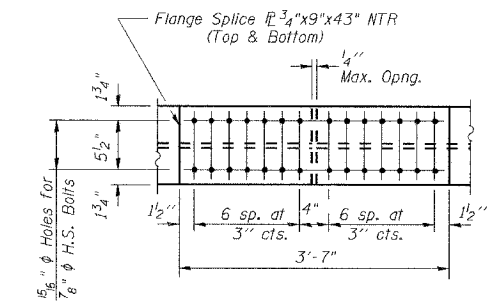


PLAN

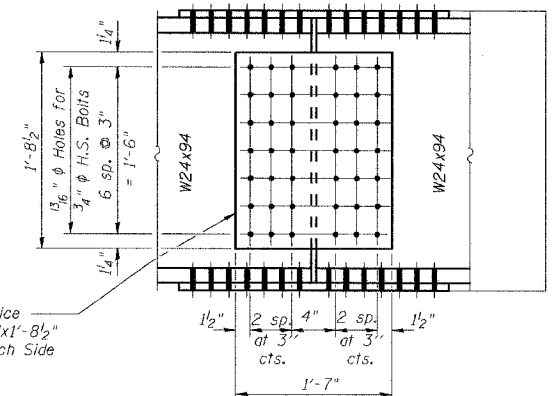
Note:
All diaphragms shall be installed as steel is erected and secured with erection pins and bolts, except as otherwise noted.
Individual diaphragms at support may be temporarily disconnected to install bearing anchor rods.

Legend:

- D1 = Exterior Diaphragm
- D2 = Interior Diaphragm



FLANGE SPLICE PLATE



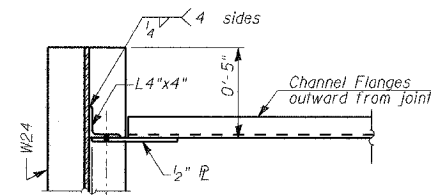
WEB SPLICE PLATE
(6 Required)

Web Splice
1/2"x19"x1'-8 1/2"
NTR Each Side

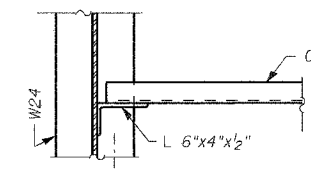
NTR = Notch toughness requirement

NOTES:

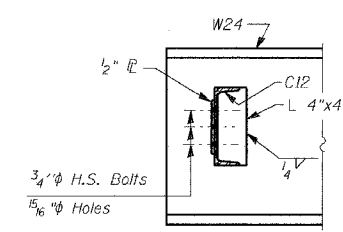
1. Install shear stud connectors in positive moment regions of the entire superstructure, as shown on sht. S8.
2. For cleaning and painting see general notes on sht. S2.
3. HS Bolts shall be AASHTO M164/ASTM A325.
4. Load carrying components designated "NTR" shall conform to the supplemental requirements for Notch toughness, Zone 2.



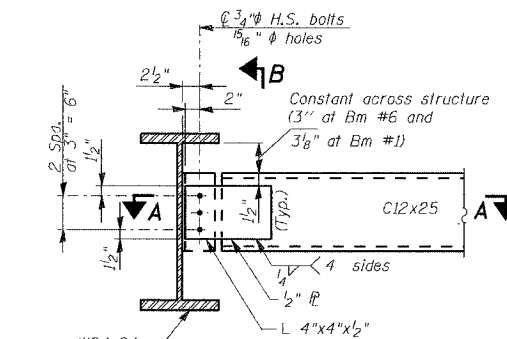
SECTION A-A



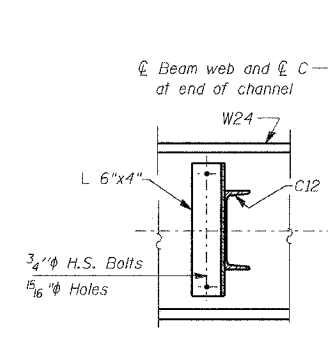
SECTION C-C



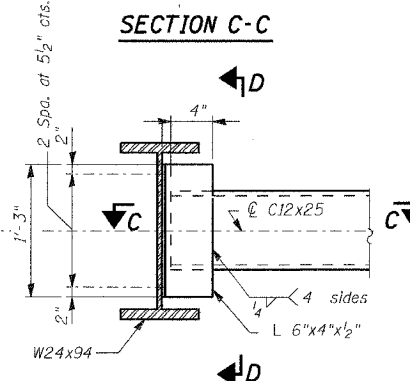
SECTION B-B



DIAPHRAGM D1
(10 Required)



SECTION D-D



DIAPHRAGM D2
(25 Required)

CONNECTION DETAILS FOR
DIAPHRAGMS TO BEAMS

Note: Two hardened washers required for each set of oversized holes.

DESIGNED	NDS/GMK
CHECKED	MTP/SMK/GBC
DRAWN	NDS/DCB
CHECKED	SMK/GBC

ILLINOIS DEPARTMENT OF TRANSPORTATION
FRAMING PLAN AND STRUCTURAL STEEL DETAILS
FAP 846
NB IL. ROUTE 53 OVER PRAIRIE CREEK STATION 1305+00 SECTION 4-RB
WILL COUNTY
STRUCTURE NO. 099-0090
SCALE: NONE
DATE: AUGUST 2007
DELTA ENGINEERING INC.
CONSULTING ENGINEERS, CHICAGO, ILLINOIS