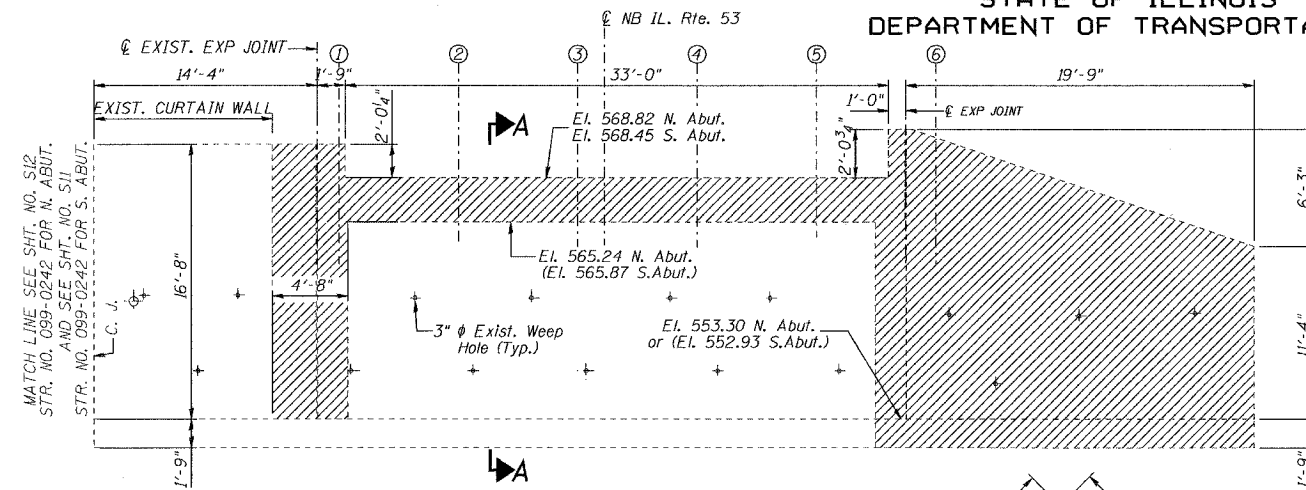


STATE OF ILLINOIS
DEPARTMENT OF TRANSPORTATION

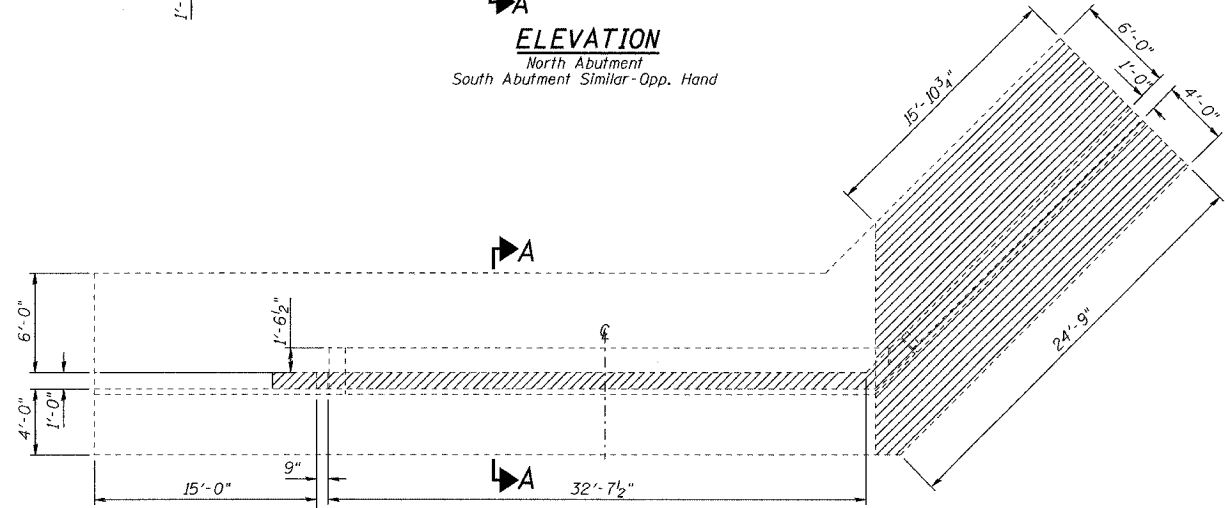
| | | | | |
|-----------------------|---------|----------|------------------|-----------|
| ROUTE NO. | SECTION | COUNTY | TOTAL SHEETS | SHEET NO. |
| F.A.P. 846 | 4-RB | WILL | 87 | 39 |
| FED. ROAD DIST. NO. 7 | | ILLINOIS | FED. AID PROJECT | |

CONTRACT NO. 62269

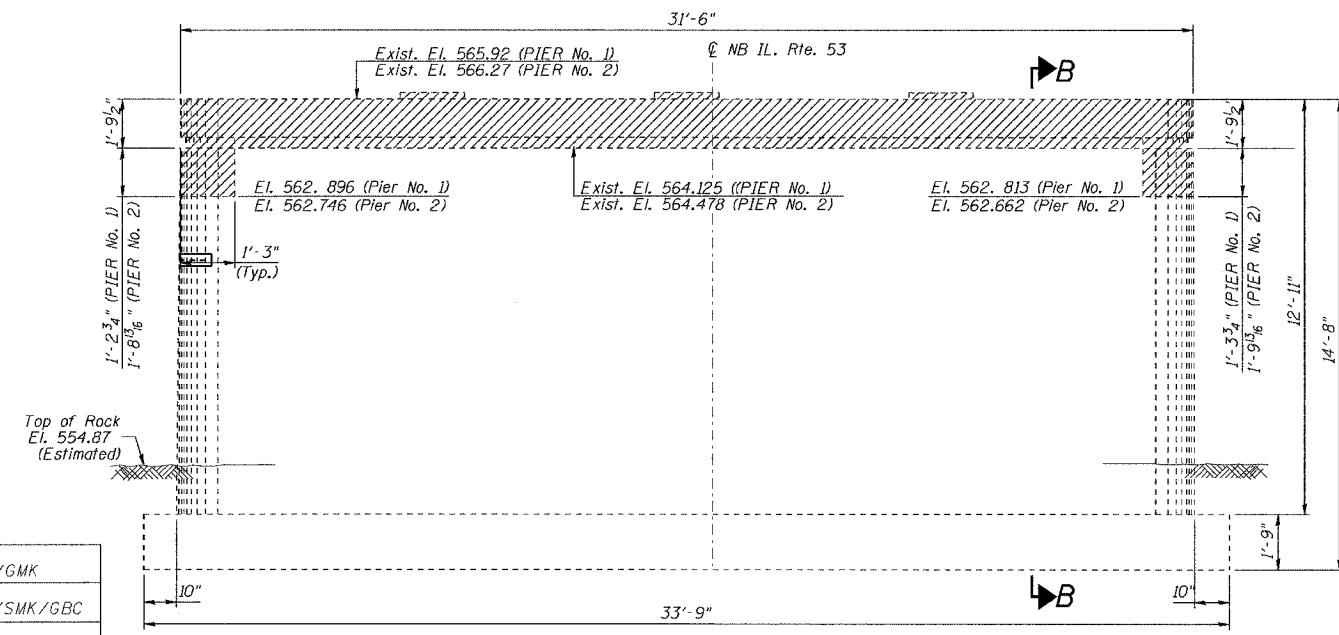
SHEET NO. S-11
SHEETS S20



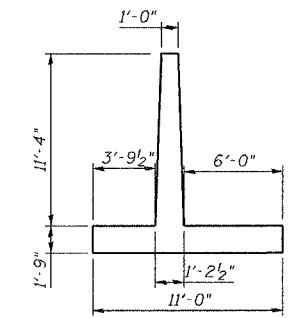
ELEVATION
North Abutment
South Abutment Similar-Opp. Hand



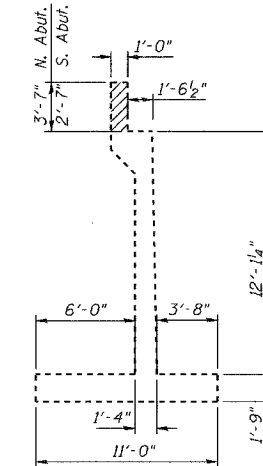
PLAN
North Abutment
South Abutment Similar-Opp. Hand



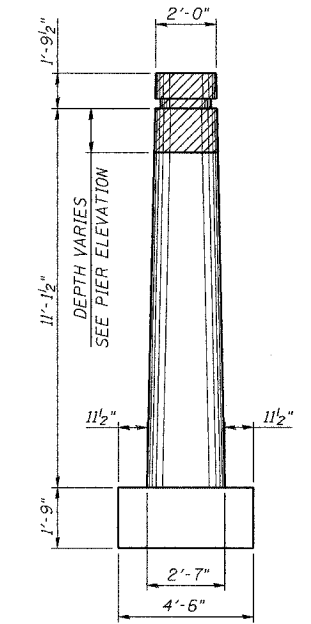
ELEVATION
(LOOKING NORTH)
PIER No. 1 AND PIER No. 2



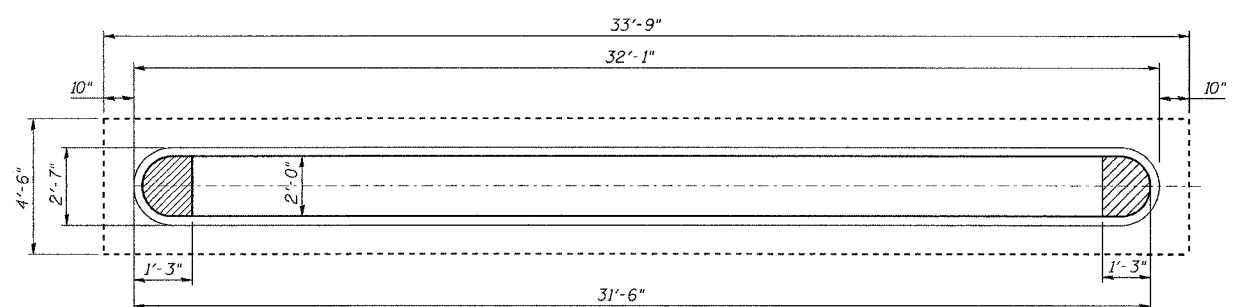
END OF WINGWALL



SECTION A-A



SECTION B-B



TOP PLAN
Pier No. 1 & Pier No. 2

BILL OF MATERIAL

| PAY ITEM | UNIT | S. ABUT. | N. ABUT. | S. PIER | N. PIER | TOTAL |
|------------------|-------|----------|----------|---------|---------|-------|
| CONCRETE REMOVAL | CU YD | 37.8 | 37.7 | 4.7 | 4.6 | 84.8 |

NOTES:

- Concrete removal shall be accomplished by methods that will not damage the existing Abutments and Piers.
- Any reinforcement bars that are damaged during concrete removal operations shall be repaired or replaced using an approved bar splicer or anchorage system. Cost included in the pay item for Concrete Removal.

LEGEND:

CONCRETE REMOVAL

| | |
|----------|-------------|
| DESIGNED | NDS/GMK |
| CHECKED | MTP/SMK/GBC |
| DRAWN | NDS/DCB |
| CHECKED | SMK/GBC |

ILLINOIS DEPARTMENT OF TRANSPORTATION

CONCRETE REMOVAL DETAILS

FAP 846
NB IL. ROUTE 53 OVER PRAIRIE CREEK
STATION 1305+00 SECTION 4-RB
WILL COUNTY

STRUCTURE NO. 099-0090

SCALE: NONE
DATE: AUGUST 2007

DELTA ENGINEERING INC.
CONSULTING ENGINEERS, CHICAGO, ILLINOIS