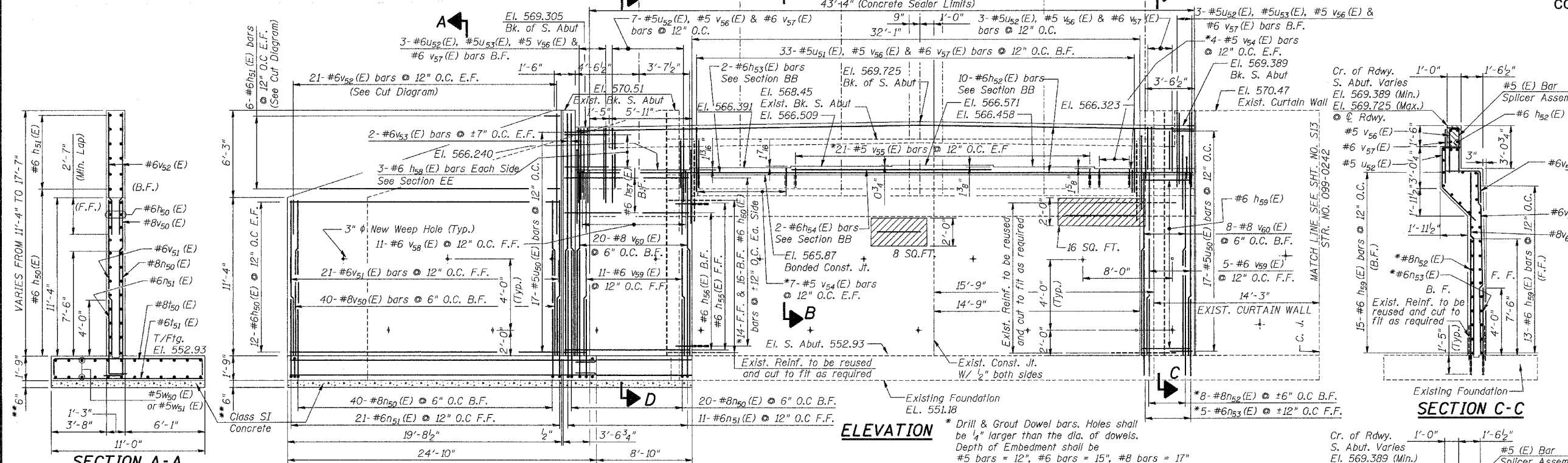


STATE OF ILLINOIS  
DEPARTMENT OF TRANSPORTATION

ROUTE NO.	SECTION	COUNTY	DATE	SHEET	SHEET NO. 512
F. A. P.	4-RB	WILL	87	40	SHEETS 520
FED. ROAD DIST. NO. 7	ILLINOIS	FED. AID PROJECT			

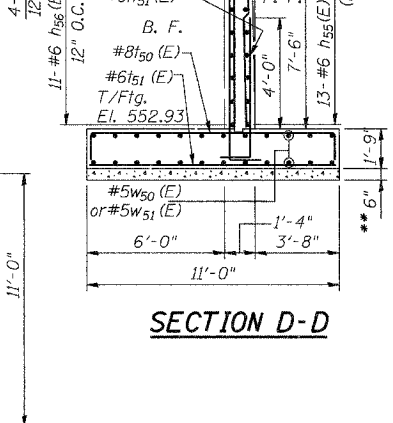
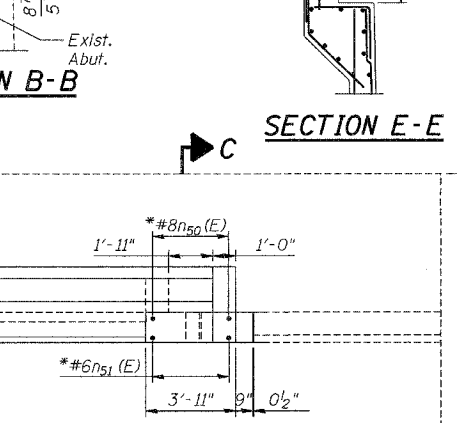
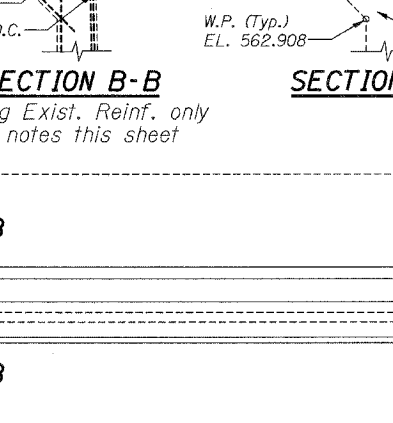
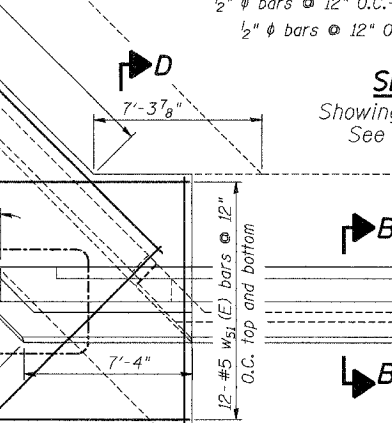
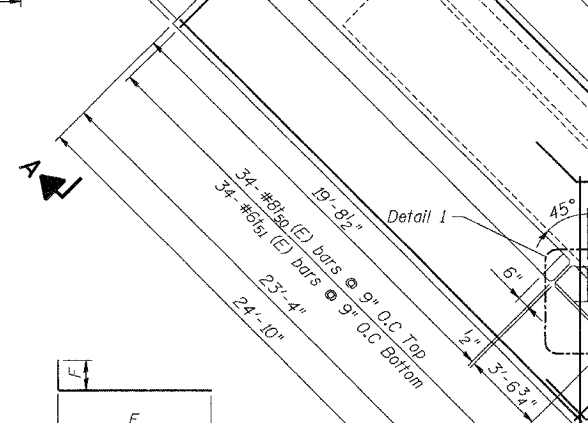
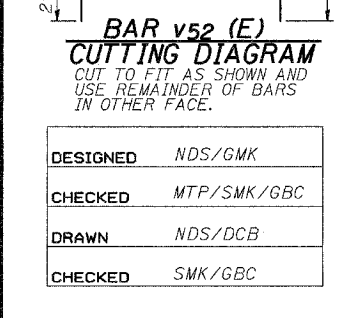
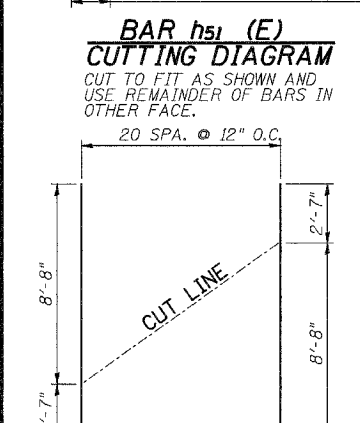
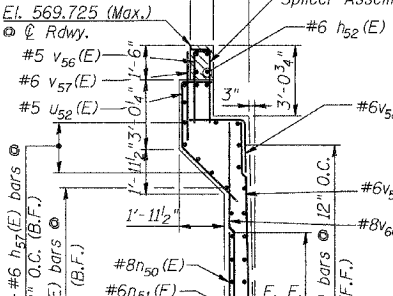
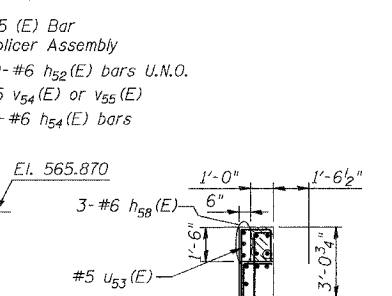
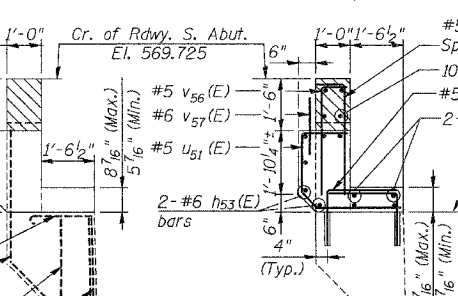
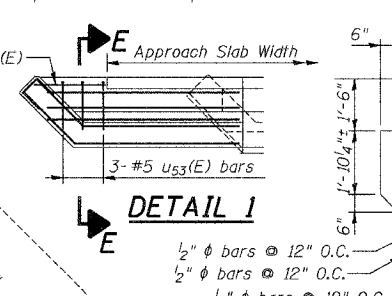
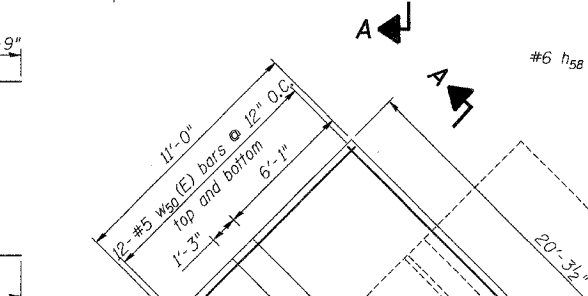
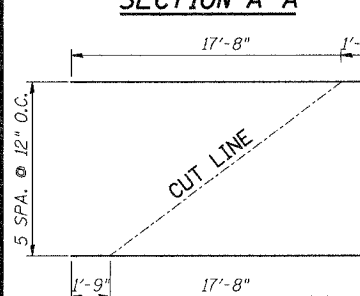
\*\* Thickness of Class SI Concrete will be 6" and may vary and will be determined by the Engineer in the field to suit site conditions.

CONTRACT NO. 62269  
BILL OF MATERIAL



Bar(E)	No.	Size	Length	Shape
h50(E)	24	#6	19'-4"	
h51(E)	6	#6	19'-5"	
h52(E)	10	#6	43'-0"	
h53(E)	2	#6	38'-0"	
h54(E)	2	#6	14'-2"	
h55(E)	13	#6	10'-2"	
h56(E)	11	#6	9'-7"	
h57(E)	4	#6	8'-4"	
h58(E)	6	#6	3'-4"	
h59(E)	28	#6	3'-7"	
h60(E)	60	#6	3'-3"	
v50(E)	40	#8	11'-2"	
v51(E)	21	#6	11'-2"	
v52(E)	21	#6	11'-3"	
v53(E)	4	#6	17'-3"	
v54(E)	22	#5	3'-4"	
v55(E)	42	#5	3'-6"	
v56(E)	46	#5	3'-6"	
v57(E)	46	#6	3'-3"	
v58(E)	15	#6	5'-3"	
v59(E)	16	#6	13'-2"	
v60(E)	28	#8	13'-2"	
n50(E)	60	#8	10'-4"	
n51(E)	32	#6	6'-5"	
n52(E)	8	#8	8'-11"	
n53(E)	5	#6	5'-3"	
t50(E)	46	#8	13'-4"	
t51(E)	46	#6	10'-8"	
v60(E)	24	#5	24'-8"	
v61(E)	24	#5	11'-0"	
u50(E)	34	#5	2'-10"	
u51(E)	33	#5	5'-6"	
u52(E)	16	#5	7'-4"	
u53(E)	6	#5	4'-10"	

Material	Quantity	Unit
Concrete Structures	58	Cu. Yd.
Reinforcement Bars, Epoxy coated	12740	Pound
Structure Excavation	316	Cu.Yd.
Cofferdam Excavation	159	Cu.Yd.
Rock Excavation for Structures	85	Cu.Yd.
Structural Repair of Concrete (Depth greater than 5")	16.0	SQ FT
Structural Repair of Concrete (Depth Equal to or Less Than 5")	8.0	SQ FT
Class SI Concrete	6.1	Cu.Yd.
Concrete Sealer	67	SQ FT



Bar	E	F	Length
n50(E)	9'-0"	1'-4"	10'-4"
n51(E)	5'-5"	1'-0"	6'-5"
v54(E)	2'-0"	1'-4"	3'-4"
v55(E)	2'-0"	1'-6"	3'-6"
v56(E)	2'-10"	0'-8"	3'-6"
v58(E)	2'-6"	2'-7"	5'-1"

Bar	A	B	Length
w51(E)	8'-6"	2'-6"	11'-0"
h55(E)	7'-1"	3'-1"	10'-2"
h56(E)	6'-9"	2'-10"	9'-7"

Bar	A	B	Length
u50(E)	11"	11"	11"
u53(E)	11"	11"	11"

Bar	A	B	Length
u50(E)	11"	11"	11"
u53(E)	11"	11"	11"

DESIGNED	NDS/GMK
CHECKED	MTP/SMK/GBC
DRAWN	NDS/DCB
CHECKED	SMK/GBC

**LEGEND:**  
 HAIRLINE CRACK (CRACK <math>< 1/16'' </math> WIDE) NOT TO BE SEALED  
 FORMED CONCRETE REPAIRS (DEPTH EQUAL TO OR LESS THAN 5 INCHES)

ILLINOIS DEPARTMENT OF TRANSPORTATION  
**SOUTH ABUTMENT REPAIRS & EXTENSION**  
 FAP 846  
 NB IL. ROUTE 53 OVER PRAIRIE CREEK STATION 1305+00 SECTION 4-RB  
 WILL COUNTY  
 STRUCTURE NO. 099-0090  
 SCALE: NONE  
 DATE: AUGUST 2007  
 DELTA ENGINEERING INC.  
 CONSULTING ENGINEERS, CHICAGO, ILLINOIS

**NOTES:**  
 1. Any reinforcement bars that are damaged during concrete removal operations shall be repaired or replaced using an approved bar splicer or anchorage system. Cost included in the pay item for Concrete Removal.  
 2. Exposed reinforcement bars after removal of existing concrete will be cleaned and wire brushed and re-used before pouring new concrete.