

STATE OF ILLINOIS
DEPARTMENT OF TRANSPORTATION

ROUTE NO.	SECTION	COUNTY	SHEET NO.	SHEET	SHEET NO. S13
F. A. P. 846	4-RB	WILL	87	41	SHEETS S20
FED. ROAD DIST. NO. 7	ILLINOIS	FED. AID PROJECT			

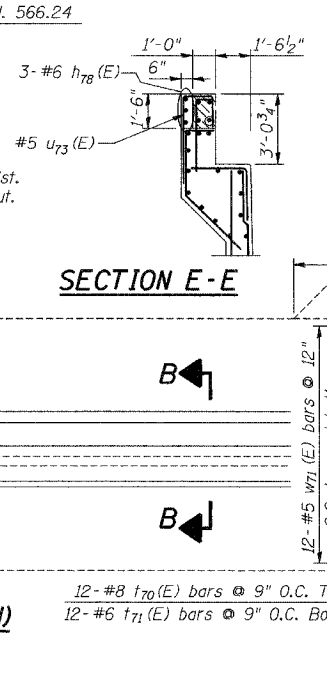
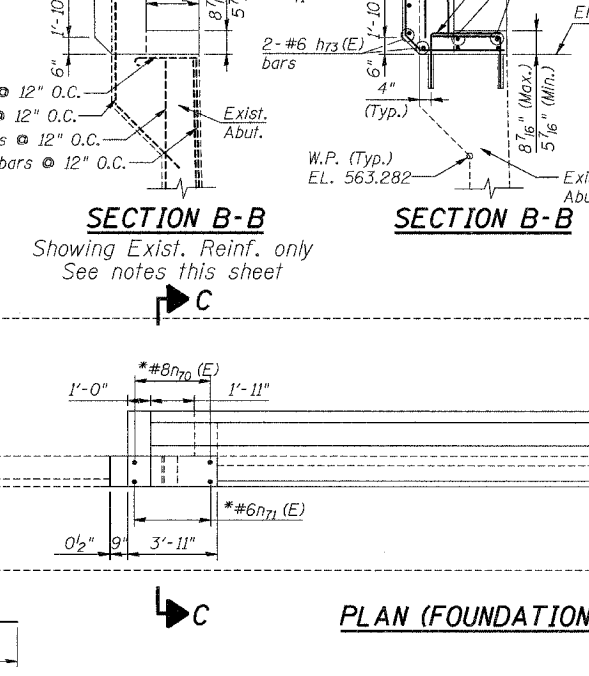
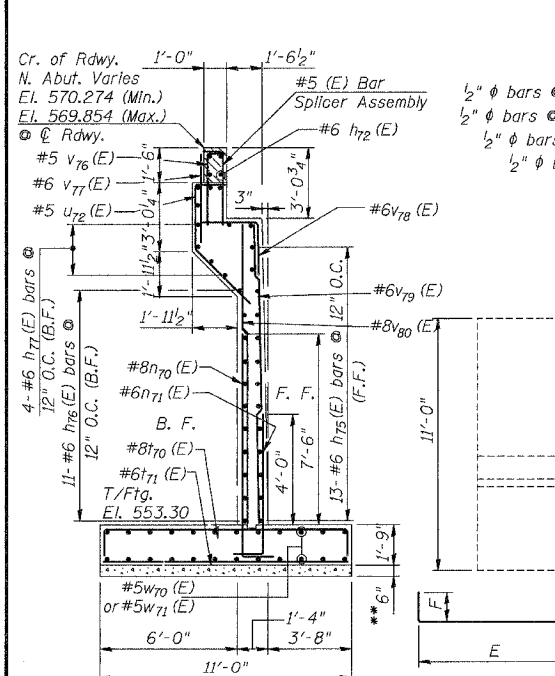
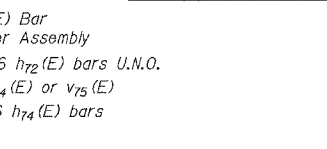
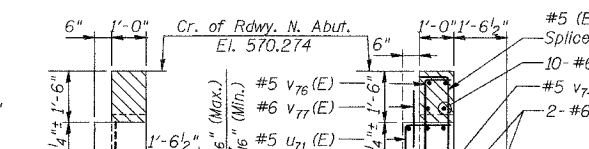
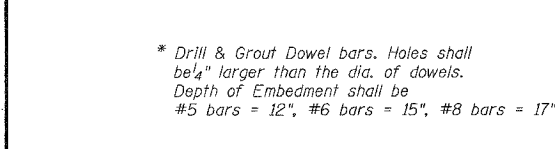
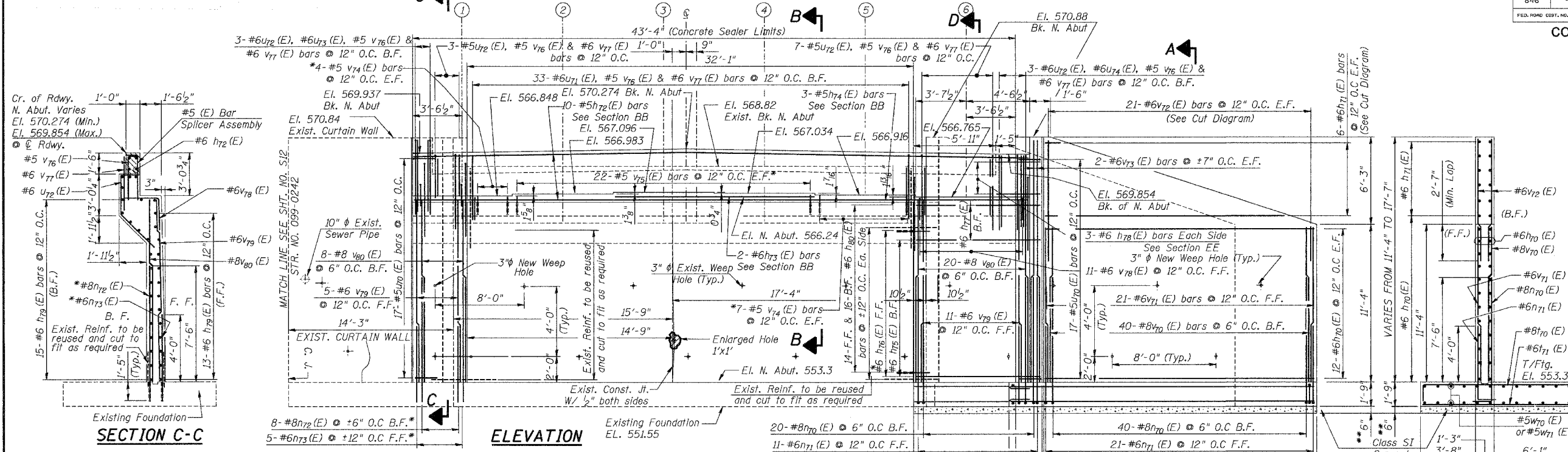
CONTRACT NO. 62269

BILL OF MATERIAL

Bar(E)	No.	Size	Length	Shape
h70(E)	24	#6	19'-4"	
h71(E)	6	#6	19'-5"	
h72(E)	10	#6	43'-0"	
h73(E)	2	#6	38'-0"	
h74(E)	2	#6	14'-2"	
h75(E)	13	#6	10'-2"	
h76(E)	11	#6	9'-7"	
h77(E)	4	#6	8'-4"	
h78(E)	6	#6	3'-0"	
h79(E)	28	#6	3'-2"	
h80(E)	60	#6	3'-3"	
v70(E)	40	#8	11'-2"	
v71(E)	21	#6	11'-2"	
v72(E)	21	#6	11'-3"	
v73(E)	4	#6	17'-3"	
v74(E)	22	#5	3'-4"	
v75(E)	42	#5	3'-6"	
v76(E)	46	#5	3'-6"	
v77(E)	46	#6	3'-3"	
v78(E)	15	#6	5'-1"	
v79(E)	16	#6	13'-2"	
v80(E)	28	#8	13'-2"	
n70(E)	60	#8	10'-4"	
n71(E)	32	#6	6'-5"	
n72(E)	8	#8	8'-11"	
n73(E)	5	#6	5'-3"	
t70(E)	46	#8	13'-4"	
t71(E)	46	#6	10'-8"	
w70(E)	24	#5	24'-8"	
w71(E)	24	#5	11'-0"	
u70(E)	34	#5	2'-10"	
u71(E)	33	#5	5'-6"	
u72(E)	16	#5	7'-4"	
u73(E)	6	#5	4'-10"	

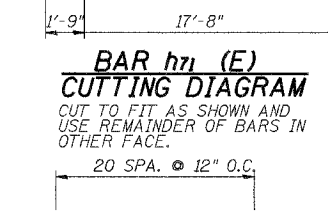
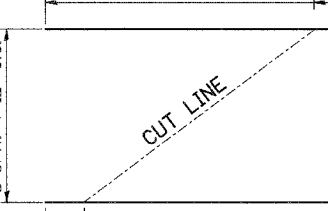
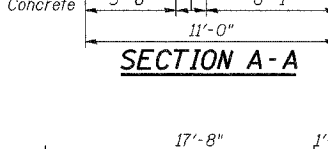
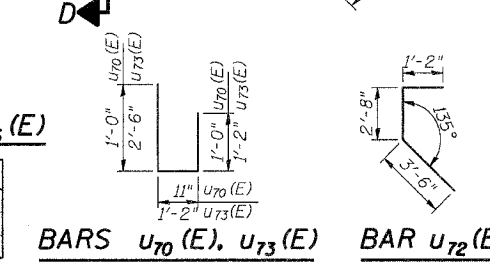
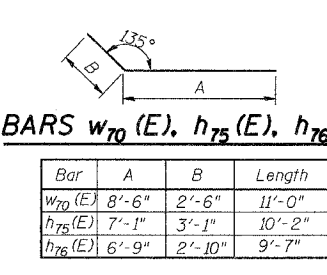
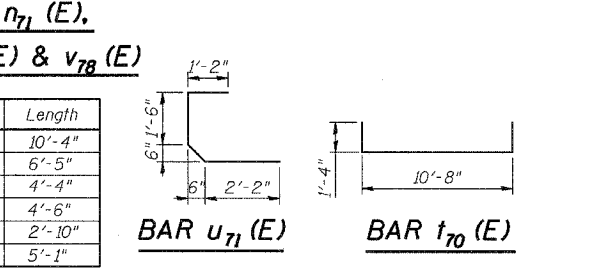
Concrete Structures	Cu. Yd.	58
Reinforcement Bars, Epoxy coated	Pound	12740
Structure Excavation	Cu.Yd.	316
Cofferdam Excavation	Cu.Yd.	159
Rock Excavation for Structures	Cu.Yd.	85
Structural Repair of Concrete (Depth Equal to or Less Than 5")	SQ FT	1.0
Class SI Concrete	Cu.Yd.	6.1
Concrete Sealer	SQ FT	67

** Thickness of Class SI Concrete will be 6" and may vary and will be determined by the Engineer in the field to suit site conditions.



BARS n70 (E), n71 (E), v74 (E) to v76 (E) & v78 (E)

Bar	E	F	Length
n70(E)	9'-0"	1'-4"	10'-4"
n71(E)	5'-5"	1'-0"	6'-5"
v74(E)	3'-0"	1'-4"	4'-4"
v75(E)	3'-0"	1'-6"	4'-6"
v76(E)	2'-2"	0'-8"	2'-10"
v78(E)	2'-6"	2'-7"	5'-1"



Reinforcement Bars designated (E) shall be epoxy coated.
Cast steps monolithically with abutment.
Space top reinforcement to miss anchor bolts.
B.F. = Back Face F.F. = Front Face
E.F. = Each Face

LEGEND:

HAIRLINE CRACK (CRACK < 1/16" WIDE) NOT TO BE SEALED

FORMED CONCRETE REPAIRS (DEPTH EQUAL TO OR LESS THAN 5 INCHES)

ILLINOIS DEPARTMENT OF TRANSPORTATION

NORTH ABUTMENT REPAIRS & EXTENSION

FAP 846
NB IL. ROUTE 53 OVER PRAIRIE CREEK STATION 1305+00 SECTION 4-RB
WILL COUNTY
STRUCTURE NO. 099-0090

SCALE: NONE
DATE: AUGUST 2007

DELTA ENGINEERING INC.
CONSULTING ENGINEERS, CHICAGO, ILLINOIS.

- NOTES:**
- Any reinforcement bars that are damaged during concrete removal operations shall be repaired or replaced using an approved bar splicer or anchorage system. Cost included in the pay item for Concrete Removal.
 - Exposed reinforcement bars after removal of existing concrete will be cleaned and wire brushed and re-used before pouring new concrete.