

STATE OF ILLINOIS
DEPARTMENT OF TRANSPORTATION

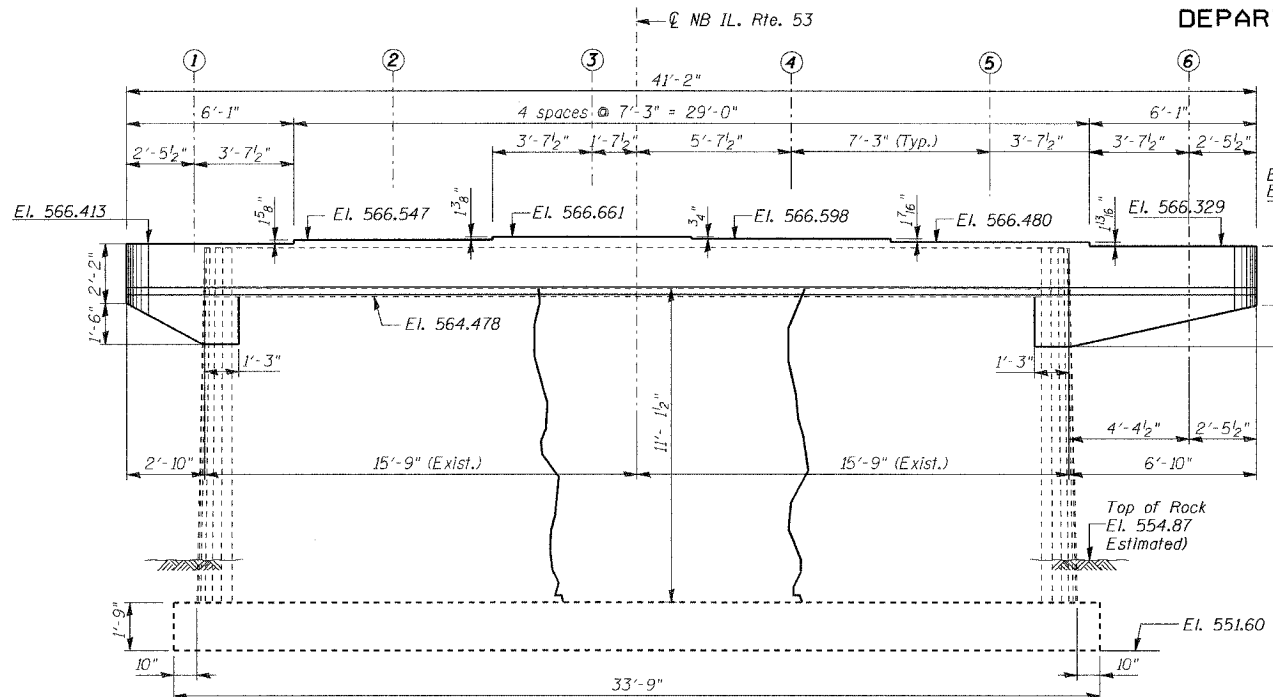
ROUTE NO. I. A. P. 846	SECTION 4-RB	COUNTY WILL	SHEETS 87	SHEET 43	SHEET NO. S15
FED. ROAD DIST. NO. 7					ILLINOIS
FED. AID PROJECT					SHEETS S20

CONTRACT NO. 62269

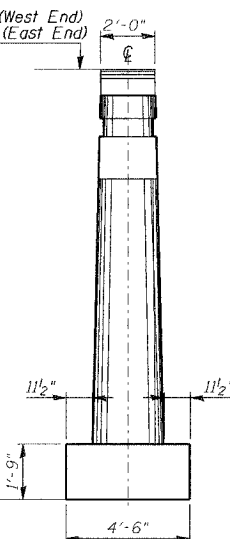
BILL OF MATERIAL

Bar	No.	Size	Length	Shape
h ₅₀ (E)	8	#6	21'-10"	U
h ₅₁ (E)	4	#6	23'-5"	U
h ₅₂ (E)	4	#6	8'-11"	U
h ₅₃ (E)	4	#6	5'-1"	U
h ₅₄ (E)	2	#6	5'-7"	U
h ₅₅ (E)	2	#6	4'-3"	U
h ₅₆ (E)	8	#6	2'-4"	U
p ₅₀ (E)	12	#9	25'-4"	U
p ₅₁ (E)	8	#9	22'-8"	U
s ₅₁ (E)	96	#4	6'-9"	□
u ₅₀ (E)	16	#4	5'-9"	U
u ₅₁ (E)	6	#4	7'-8"	U
u ₅₂ (E)	23	#4	3'-8"	U
Reinforcement Bars, Epoxy Coated Concrete Structures				Pound Cu. Yd.
				2840 7.5

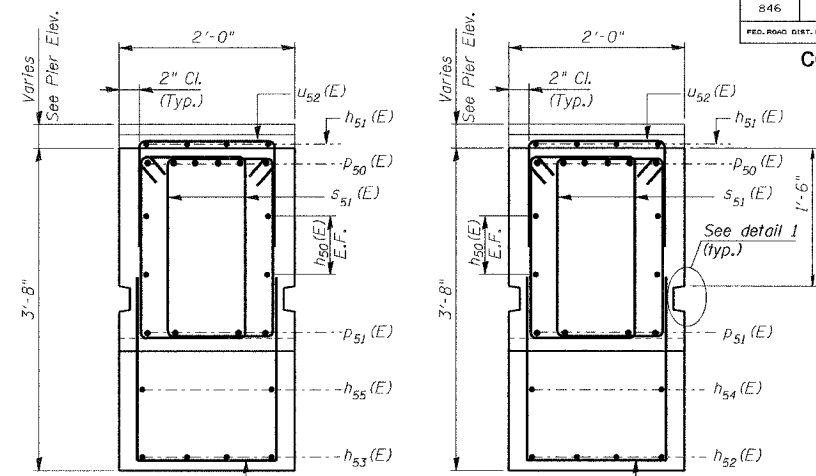
Reinforcement Bars designated (E) shall be epoxy coated.
Cast steps monolithically with cap.
Space cap reinforcement to miss anchor bolts.



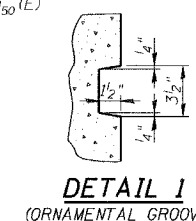
ELEVATION
(SOUTH FACE OF PIER NO. 1)
(LOOKING NORTH)



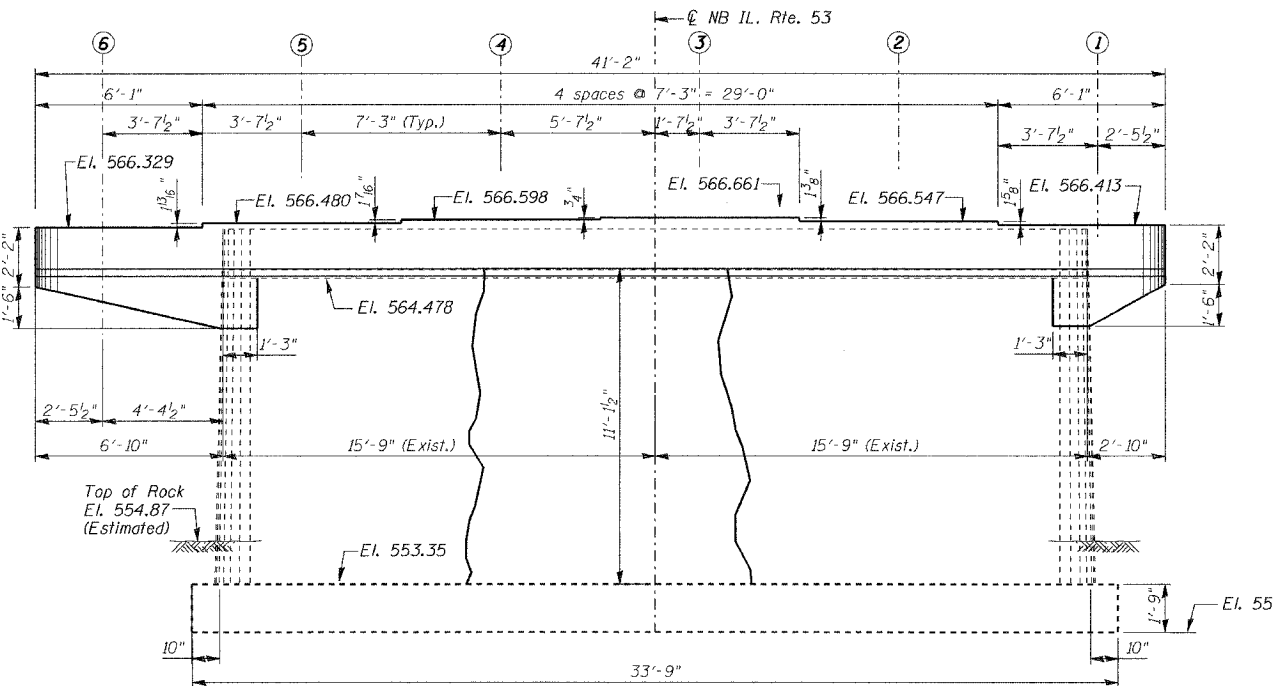
END ELEVATION



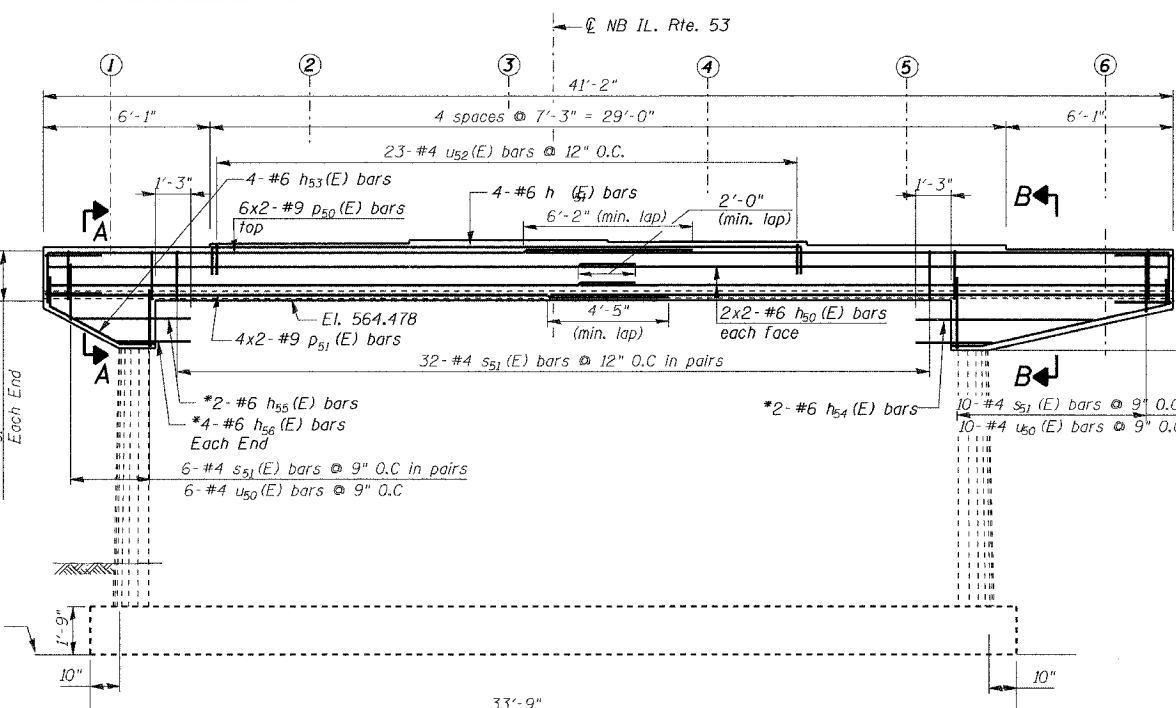
SECTION A-A SECTION B-B



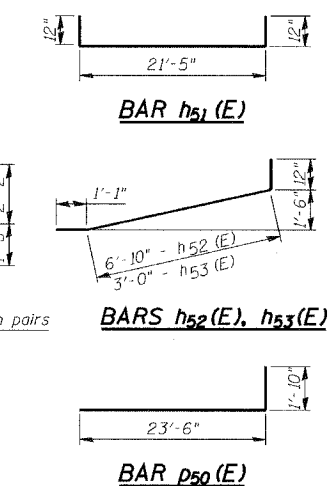
DETAIL 1
(ORNAMENTAL GROOVE)



ELEVATION
(NORTH FACE OF PIER NO. 2)
(LOOKING SOUTH)

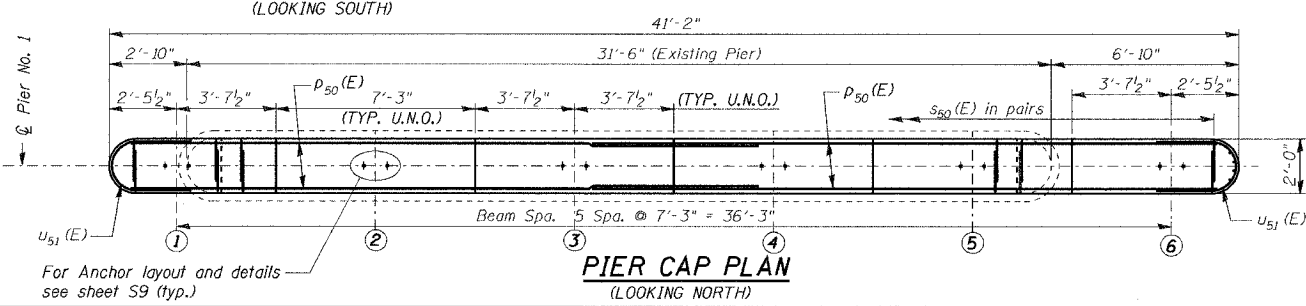


ELEVATION
(SHOWING REINFORCEMENT ONLY)

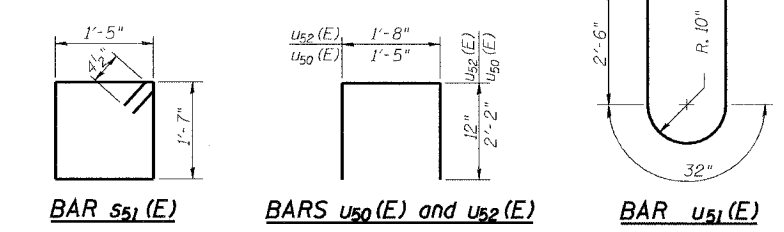


LEGEND:
Hairline crack (crack < 1/16" wide)
Not to be sealed

DESIGNED	NDS/GMK
CHECKED	MTP/SMK/GBC
DRAWN	NDS/DCB
CHECKED	SMK/GBC



PIER CAP PLAN
(LOOKING NORTH)



BAR s₅₁(E) BARS u₅₀(E) and u₅₂(E) BAR u₅₁(E)

* Drill and grout #6 h₅₄(E), h₅₅(E) and h₅₆(E) bars in 1" dia. x 15" min. drilled holes according to Article 584 of the Standard Specifications.

ILLINOIS DEPARTMENT OF TRANSPORTATION
**PIER NO. 2
REPAIRS & EXTENSION**
FAP 846
NB IL. ROUTE 53 OVER PRAIRIE CREEK
STATION 1305+00 SECTION 4-RB
WILL COUNTY
STRUCTURE NO. 099-0090
SCALE: NONE
DATE: AUGUST 2007
DEI DELTA ENGINEERING INC.
CONSULTING ENGINEERS, CHICAGO, ILLINOIS