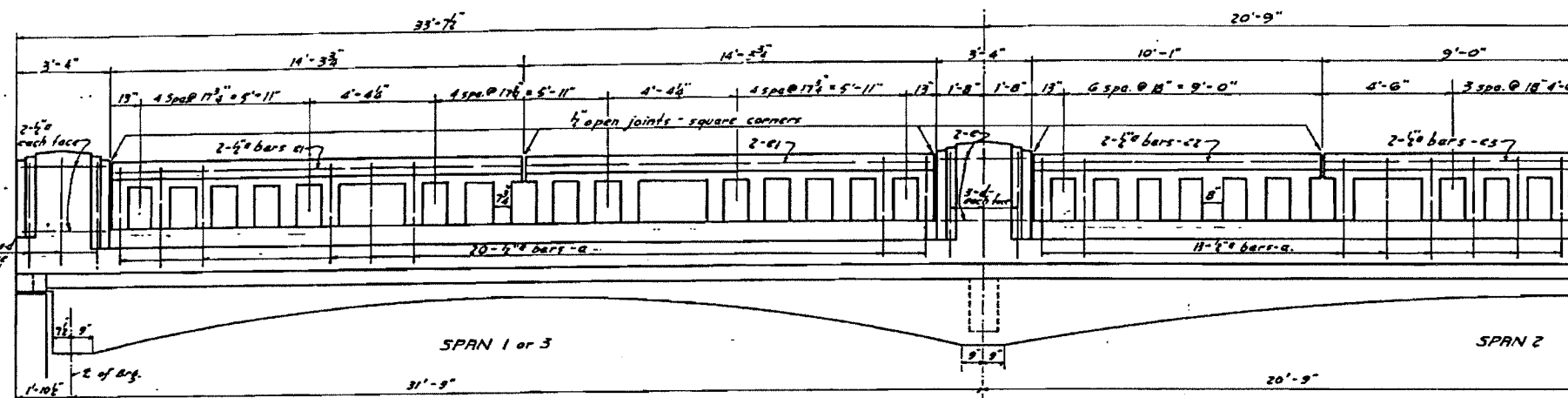


SHEET NO. 48C
NORTHBOUND BRIDGE
STRUCTURE No. 099-0090
EXISTING PLANS

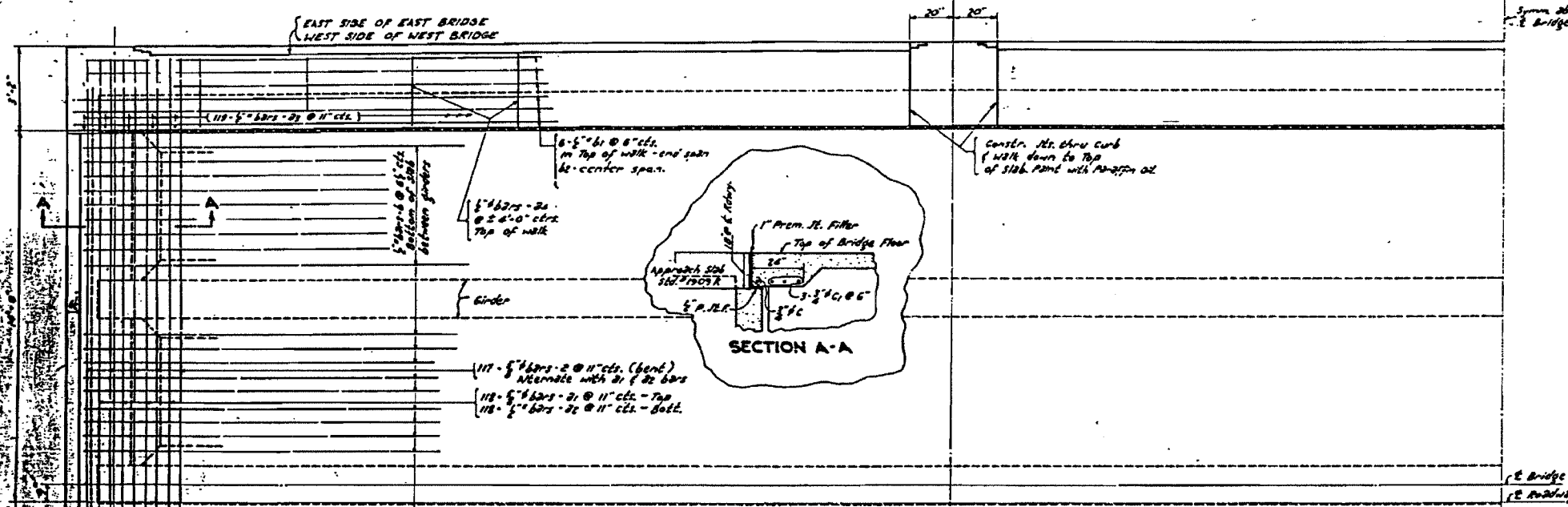
BILL OF MATERIAL - SUPERSTRUCTURE
FOR EAST BRIDGE
BILL OF MATERIAL FOR WEST
BRIDGE - SAME

BAR	No.	SIZE	LENGTH
1	117	5/8"	33'-3"
2	118	5/8"	32'-6"
22	118	5/8"	32'-0"
23	238	5/8"	1'-8"
24	26	5/8"	2'-9"
6	160	5/8"	28'-0"
61	18	-	31'-9"
62	18	-	19'-9"
c	2	3/8"	32'-9"
c1	6	3/8"	29'-0"
h1	12	5/8"	29'-0"
s	48	5/8"	7'-3"
d	180	5/8"	4'-0"
e	32	5/8"	3'-0"
e1	16	-	14'-0"
e2	8	-	9'-9"
e3	4	-	17'-9"
17500 " Concrete		Cu. Yds.	156.3
Handrail Concrete		Cu. Yds.	12.6
Reinforcement BARS		Lbs.	12150
Structural Steel		Lbs.	6640

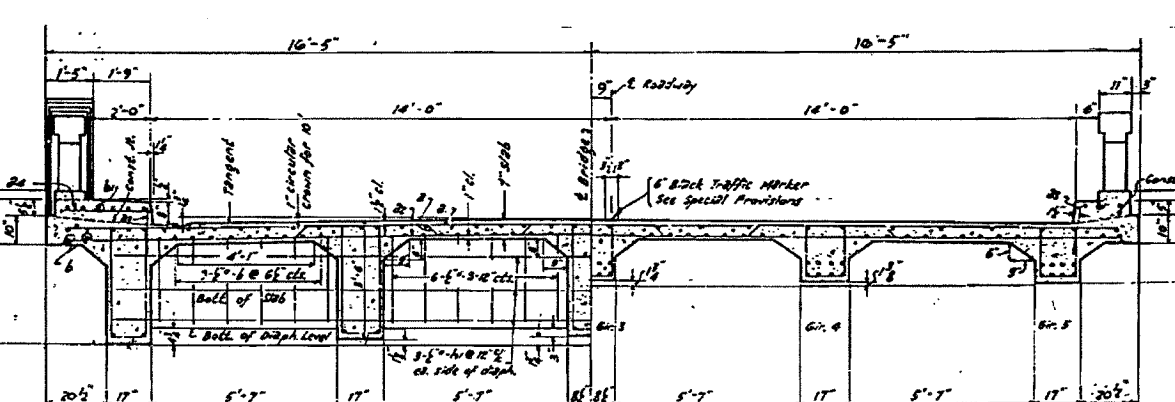
For details of Rail Posts and Railing - See Sheet #4
For Reinforcement BARS in Girders and Longitudinal
BARS in top of slab see sheet #3.



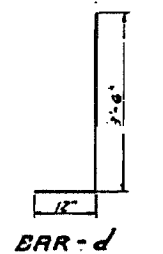
ELEVATION



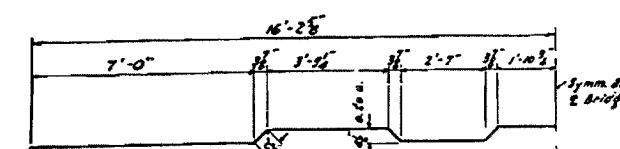
PLAN



CROSS SECTION - LOOKING SOUTH FOR EAST BRIDGE
LOOKING NORTH FOR WEST BRIDGE



DETAIL OF DIAPHR.



BAR-2

COMPUTED	R. W. ...	EXAMINED	8-7-41
CHECKED	R. W. ...	APPROVED	N. W. ...
DRAWN	B. W. ...		
CHECKED	R. W. ...		
SPECIAL	ASSEMBLED		
	CHECKED		

Revised 9-10-41 G. R. B.
Revised 3-21-42

FOR REFERENCE ONLY

D.R. W. PROJ. 4-C-(1)
PRAIRIE CREEK BRIDGE
F.A. RTE. 5 SEC. 4-R-B
WILL COUNTY
STA. 370+14