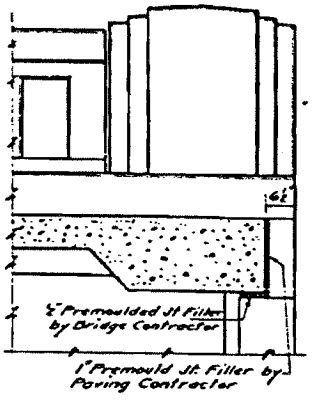
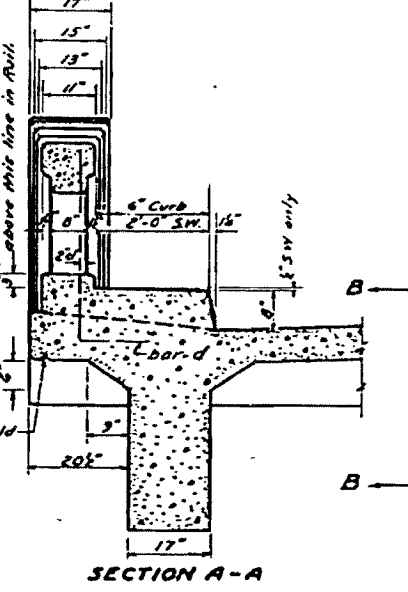
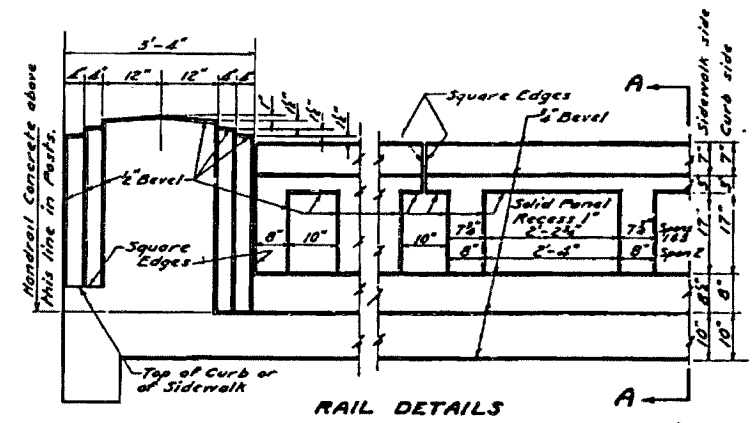
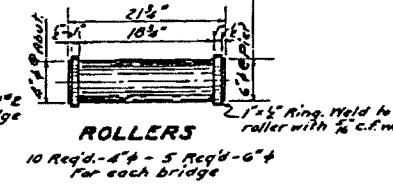


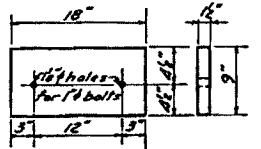
DIVISION OF HIGHWAYS



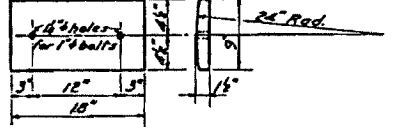
NOTE: Rollers, rollers and plates detailed on this sheet are included in the item of 'Structural Steel in the bill of material - Sheet #2 Est. weight = 4,640 Lbs. 2x bridge



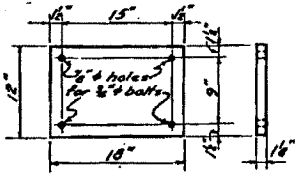
10 Req'd. - 4" - 5 Req'd. - 6" For each bridge



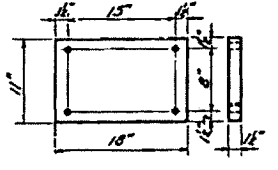
5 Req'd. - each bridge



5 Req'd. for each bridge

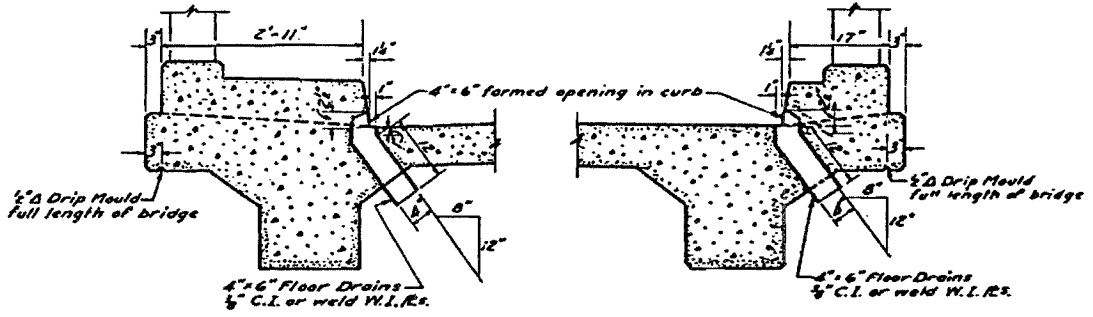


10 Req'd. for each bridge



5 Req'd. for each bridge

BEARING DETAILS



FLOOR DRAIN DETAILS

Girders	10 Spaces @ 2' 3"-2 1/2" = 31'-9"			10 Spaces @ 2' 4"-1 1/2" = 41'-6"			10 Spaces @ 2' 3"-2 1/2" = 31'-9"		
	1	2	3	1	2	3	1	2	3
1	1.45	0.105	0.105	1.45	0.105	0.105	1.45	0.105	0.105
2	1.45	0.105	0.105	1.45	0.105	0.105	1.45	0.105	0.105
3	1.45	0.105	0.105	1.45	0.105	0.105	1.45	0.105	0.105
4	1.45	0.105	0.105	1.45	0.105	0.105	1.45	0.105	0.105
5	1.45	0.105	0.105	1.45	0.105	0.105	1.45	0.105	0.105
6	1.45	0.105	0.105	1.45	0.105	0.105	1.45	0.105	0.105
7	1.45	0.105	0.105	1.45	0.105	0.105	1.45	0.105	0.105
8	1.45	0.105	0.105	1.45	0.105	0.105	1.45	0.105	0.105
9	1.45	0.105	0.105	1.45	0.105	0.105	1.45	0.105	0.105
10	1.45	0.105	0.105	1.45	0.105	0.105	1.45	0.105	0.105

GIRDER OFFSETS

NOTE: Ordinates from Elev. 566.30 to bottom of Girders are measured at 5' of Girder and include Vertical Curve, Camber and D.L. Deflections and shall be adjusted for form shrinkage and settlement of falsework only.

COMPUTED	<i>R. H. ...</i>
CHECKED	<i>R. H. ...</i>
DRAWN	<i>R. H. ...</i>
CHECKED	<i>R. H. ...</i>
ASSEMBLED	
CHECKED	

EXAMINED	<i>H. F. ...</i>
PASSED	<i>H. F. ...</i>
APPROVED	<i>W. W. ...</i>

D.R.-W.I. PROJ. 4-C (1) PRAIRIE CREEK BRIDGE F.A. ROUTE 5 SEC. 4 R-B WILL COUNTY STA. 370+14

FOR REFERENCE ONLY