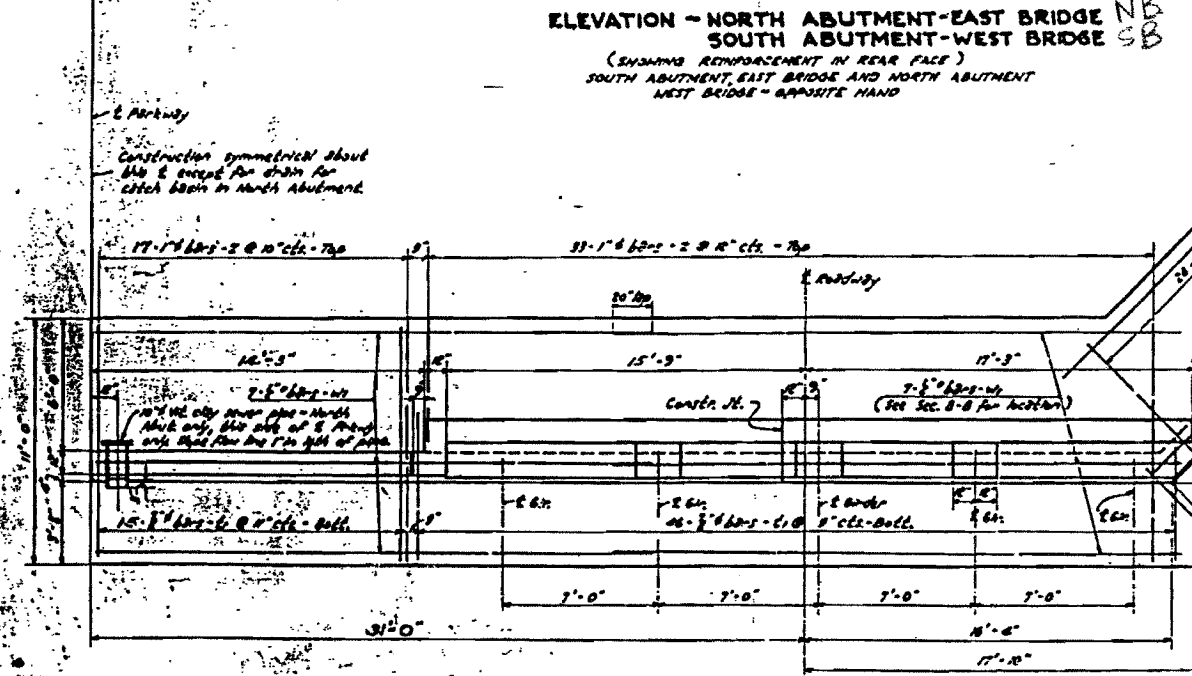
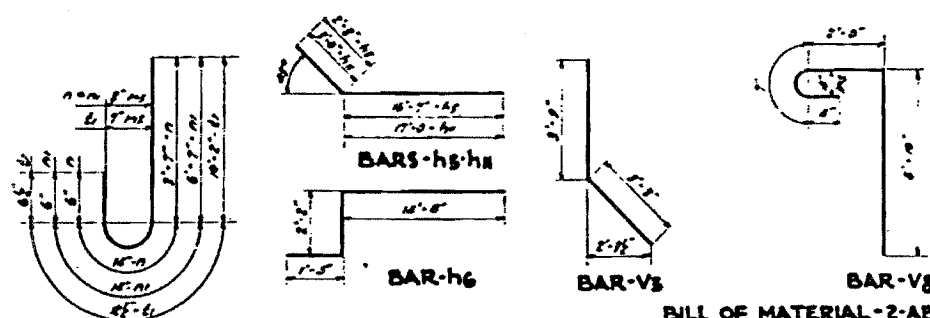


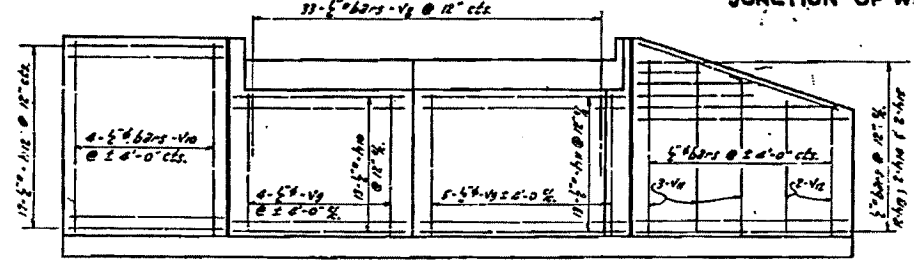
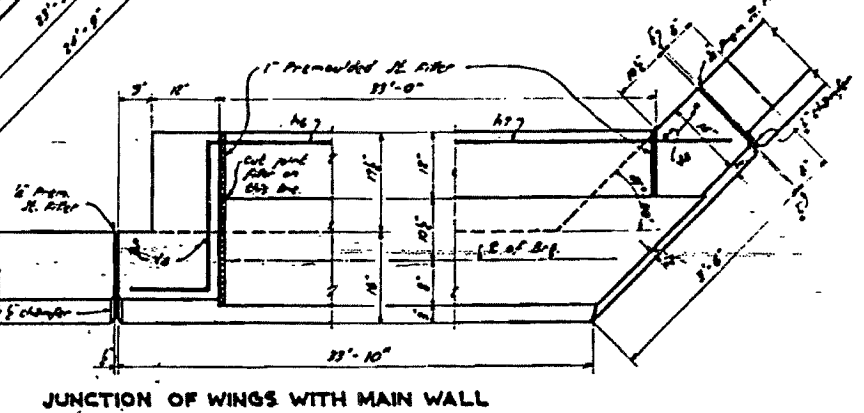
ELEVATION - NORTH ABUTMENT-EAST BRIDGE
SOUTH ABUTMENT-WEST BRIDGE
(SHOWING REINFORCEMENT IN REAR FACE)
SOUTH ABUTMENT, EAST BRIDGE AND NORTH ABUTMENT, WEST BRIDGE - OPPOSITE HAND



PLAN - NORTH ABUTMENT-EAST BRIDGE
SOUTH ABUTMENT-WEST BRIDGE
SOUTH ABUTMENT, EAST BRIDGE AND NORTH ABUTMENT, WEST BRIDGE - OPPOSITE HAND

BILL OF MATERIAL - 2 ABUT'S - EAST BRIDGE
BILL OF MATERIAL FOR WEST BRIDGE - SAME

BAR	NO.	SIZE	LENGTH	BAR	NO.	SIZE	LENGTH
n1	8	1/2"	16'-0"	n6	100	5/8"	8'-8"
n2	8	1/2"	18'-5"	n7	64	5/8"	8'-5"
n3	8	1/2"	18'-5"	n8	48	1/2"	7'-0"
n4	8	1/2"	18'-0"	n9	48	1/2"	17'-6"
n5	8	1/2"	18'-0"	n10	8	1/2"	11'-8"
n6	24	1/2"	18'-0"	n11	12	1/2"	10'-0"
n7	24	1/2"	20'-0"	n12	48	5/8"	9'-5"
n8	24	1/2"	15'-0"	n13	18	5/8"	12'-0"
n9	24	1/2"	17'-6"	n14	8	1/2"	17'-0"
n10	8	1/2"	12'-0"	n15	8	1/2"	18'-8"
n11	4	1/2"	8'-0"	n16	4	1/2"	11'-8"
n12	176	1/4"	8'-5"	n17	28	1/2"	25'-5"
n13	176	1/4"	8'-5"	n18	18	1/2"	21'-6"
n14	2	1/4"	8'-5"				
n15	2	1/4"	8'-5"				
CONCRETE				Cu. Yd.			201.9
REINFORCEMENT BARS				Lbs.			21,530
ROCK EXCAVATION FOR STRUCTURE				Cu. Yd.			204



ELEVATION - NORTH ABUTMENT-EAST BRIDGE
SOUTH ABUTMENT-WEST BRIDGE
(SHOWING REINFORCEMENT IN FRONT FACE)

COMPUTED	R.H.H.
CHECKED	H.B. G.
DRAWN	R.S.L. - G. M.
CHECKED	H.B. G.
SPECIAL	ASSEMBLED
	CHECKED

EXAMINED 8-27-10
APPROVED
N.W. Polk

Revised 9-10-11 G.F.B.

NORTHBOUND BRIDGE
STRUCTURE NO. 009-0090
EXISTING PLANS

FOR REFERENCE ONLY

NB ABUTMENT
D&W PROJ. 4-2(0)
PRAIRIE CREEK BRIDGE
PART 5 SEC. 4-R-B
WILL COUNTY
STA. 370+4

Revised 3-2-41 - R.T.S. Revised 12-30-41 - R.T.S.
Revised 5-27-42 - R.T.S. - C.K. - R.W.