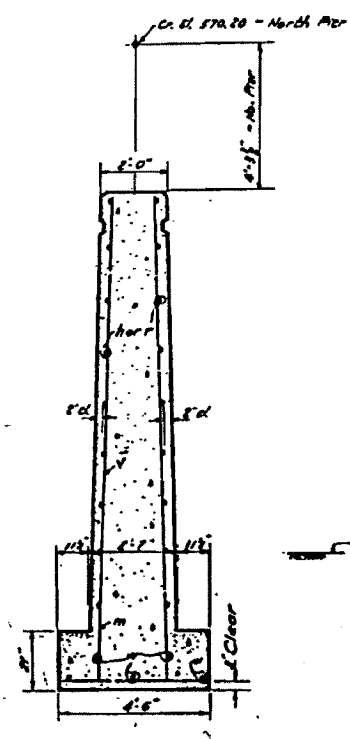
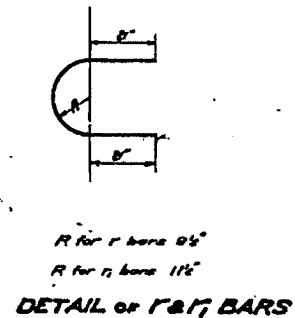


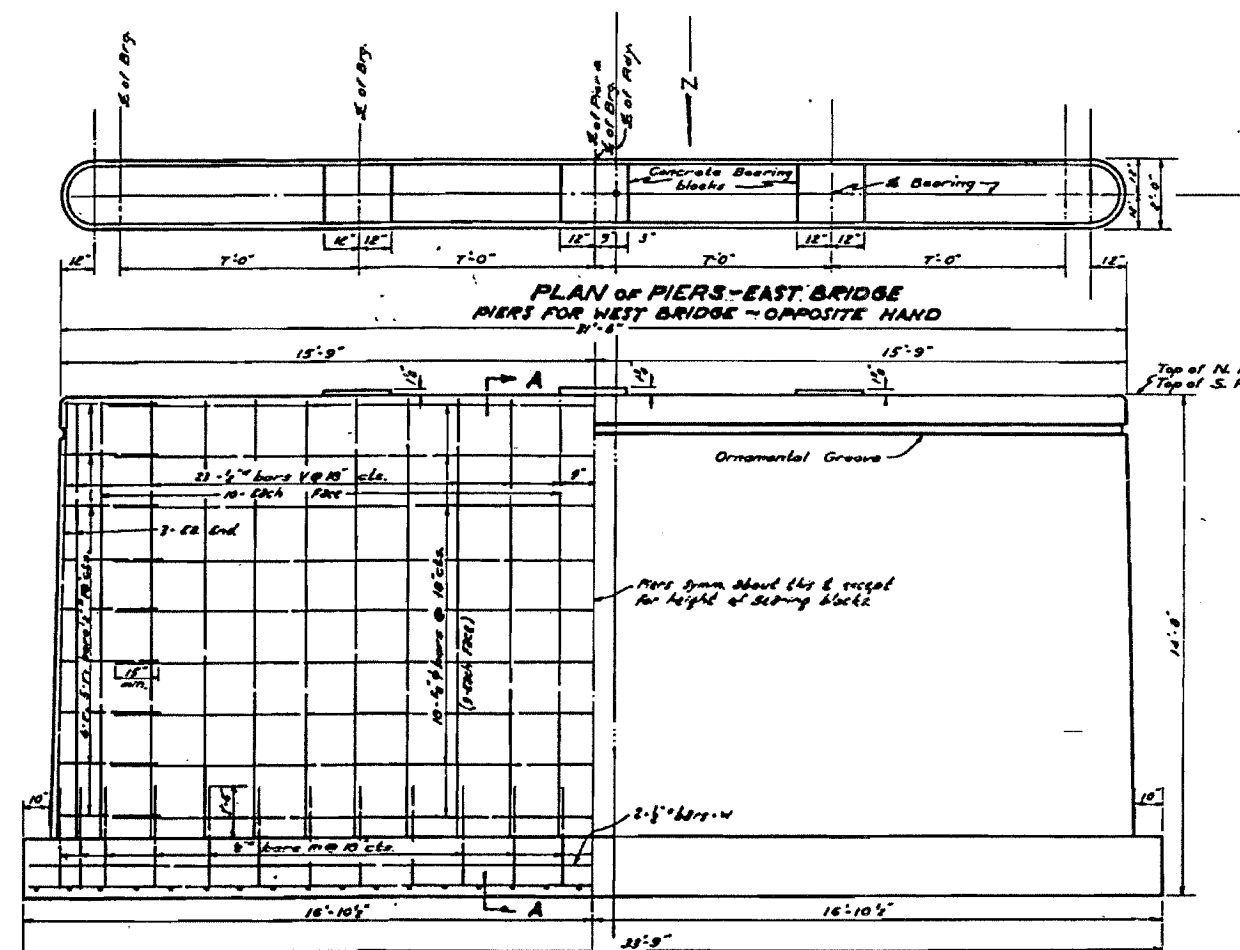
SHEET NO. 48 I
 NORTHBOUND BRIDGE
 STRUCTURE No. 099-0090
 EXISTING PLANS



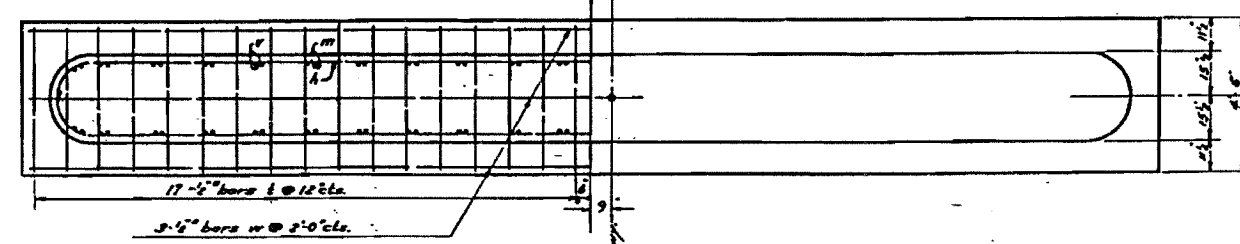
SECTION A-A



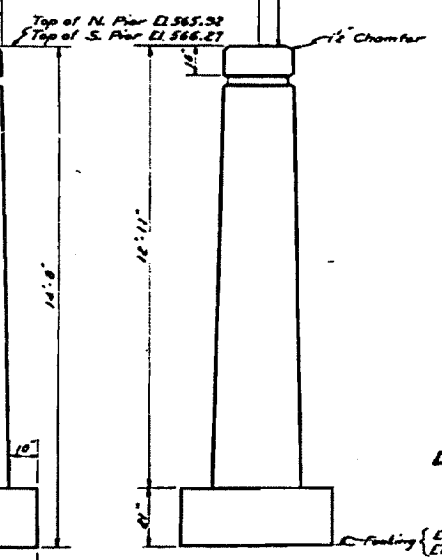
DETAIL OF R & T BARS



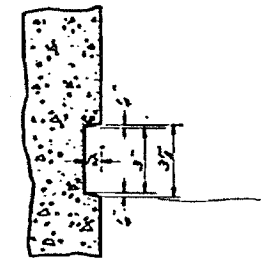
ELEVATION OF PIERS - EAST BRIDGE
 PIERS FOR WEST BRIDGE - OPPOSITE HAND



PLAN OF BASE OF PIERS AND FOOTINGS - EAST BRIDGE
 PIERS FOR WEST BRIDGE - OPPOSITE HAND



END ELEVATION



DETAIL OF ORNAMENTAL GROOVE

BILL OF MATERIAL - 2 PIERS - EAST BRIDGE
 BILL OF MAT'L FOR WEST BRIDGE - SAME

Bar	No.	Size	Length
H	36	2 1/2"	29'-0"
W	20	1/2"	17'-6"
R	16	1/2"	6'-0"
T	20	1/2"	6'-0"
L	64	1/2"	4'-0"
V	32	1/2"	12'-0"
W	20	1/2"	17'-6"

Class A Concrete C. No. 121
 Reinforcement Bars Lbs. 1000
 and 2000 A. Structural C. No. 10

COMPUTED	B.W. Tilly	EXAMINED	8-22-41
CHECKED	H.P. [Signature]	APPROVED	W.W. [Signature]
DRAWN	B.W. Tilly		
CHECKED	H.P. [Signature]		
ASSEMBLED			
CHECKED			

Revised 9-10-41 J.F.B.
 Revised 5-21-42 R.Z.S. - C.K. R.W.

FOR REFERENCE ONLY

PRAIRE CREEK BRIDGE
 F.A. RT. 5 SEC. 4-R-B
 D.R.-MT. PROJ. 4-C(1)
 WILL COUNTY
 STA. 370+14

N.B.