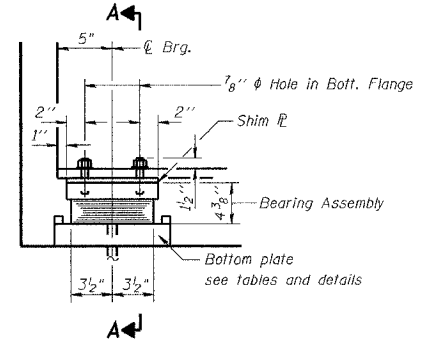


STATE OF ILLINOIS
DEPARTMENT OF TRANSPORTATION

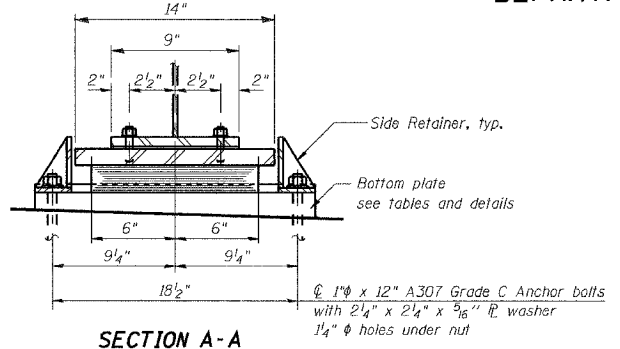
ROUTE NO.	SECTION	COUNTY	SHEET	SHEET
F. A. P. 846	4B-1-R	WILL	87	57
FED. ROAD DIST. NO. 7	ILLINOIS	FED. AID PROJECT		

CONTRACT NO. 62269

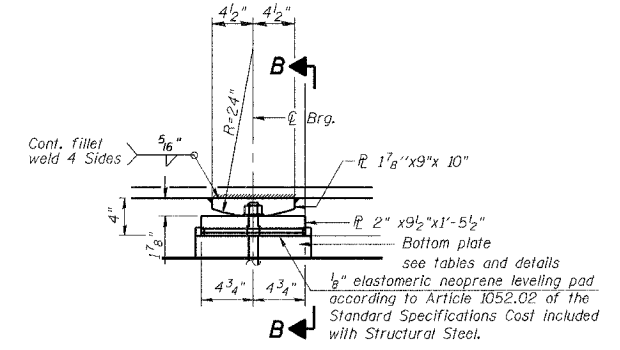
SHEET NO. S9
SHEETS S17



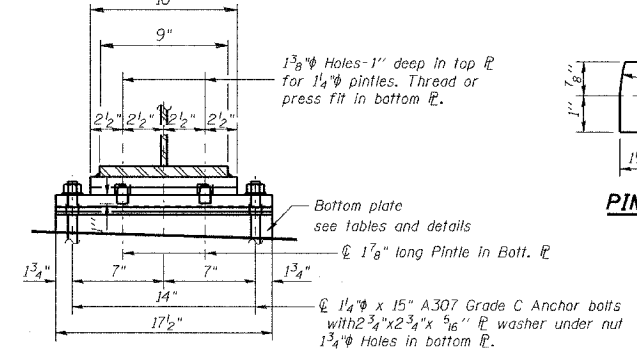
ELEVATION AT ABUT.



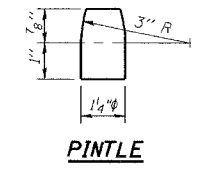
SECTION A-A



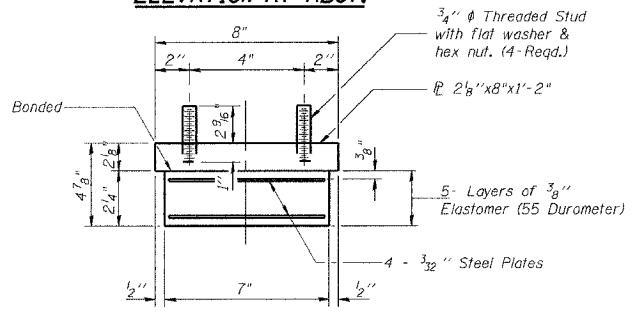
ELEVATION AT PIER #1



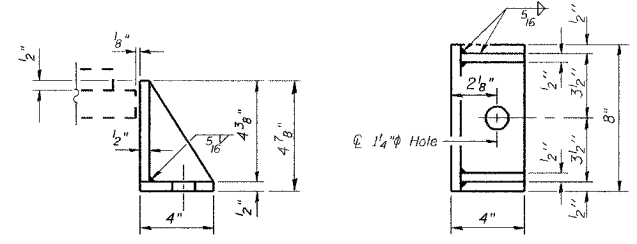
SECTION B-B



PINTLE



BEARING ASSEMBLY

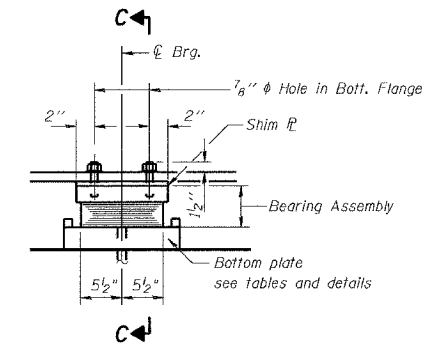


SIDE RETAINER

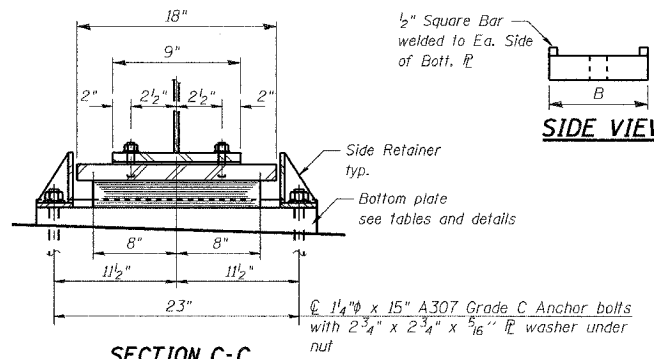
Equivalent rolled angle with stiffeners will be allowed in lieu of welded plates. Weight included with Structural Steel.

FIXED BEARING @ PIER #1
(6 Req'd)

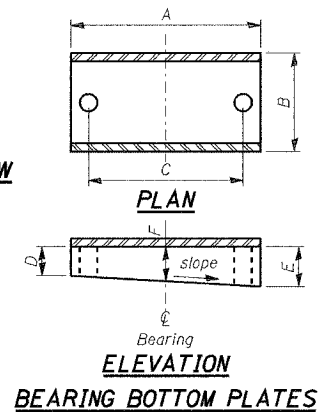
TYPE I ELASTOMERIC EXP. BRG. @ ABUTMENTS
(12 Req'd)



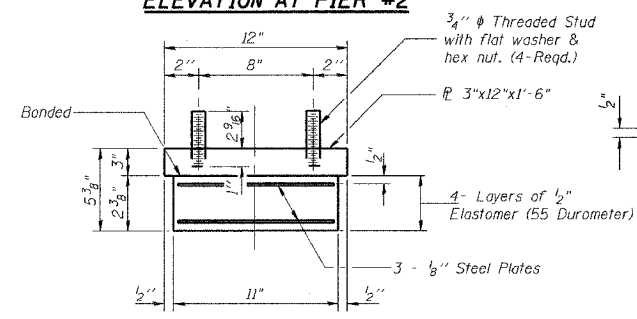
ELEVATION AT PIER #2



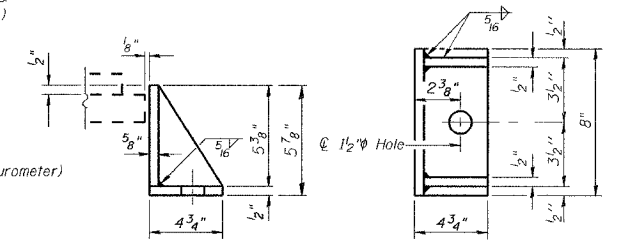
SECTION C-C



BEARING BOTTOM PLATES



BEARING ASSEMBLY



SIDE RETAINER

Equivalent rolled angle with stiffeners will be allowed in lieu of welded plates. Weight included with Structural Steel.

TYPE I ELASTOMERIC EXP. BRG. @ PIER #2
(6 Req'd)

Bottom Plate @ South Abutment (Exp.)

Beam No.	A	B	C	D	E	F
1	22 1/4	9	18 1/2	1 5/16	1 3/4	1 9/16
2	22 1/4	9	18 1/2	1 1/4	1 3/4	1 1/2
3	22 1/4	9	18 1/2	1 7/16	1 3/4	1 5/8
4	22 1/4	9	18 1/2	1 5/16	1 5/8	1 1/2
5	22 1/4	9	18 1/2	1 5/16	1 1/6	1 1/2
6	22 1/4	9	18 1/2	1 1/4	1 1/6	1 1/6

Bottom Plate @ North Abutment (Exp.)

Beam No.	A	B	C	D	E	F
1	22 1/4	9	18 1/2	1 1/8	9/16	3/8
2	22 1/4	9	18 1/2	1/6	9/16	3/16
3	22 1/4	9	18 1/2	1/4	9/16	3/16
4	22 1/4	9	18 1/2	1/8	1/6	5/16
5	22 1/4	9	18 1/2	3/8	1/2	5/16
6	22 1/4	9	18 1/2	1/6	1/2	3/16

Bottom Plate @ Pier #1 (Fix.)

Beam No.	A	B	C	D	E	F
1	17 1/2	11 1/2	14	2	2 5/16	2 3/16
2	17 1/2	11 1/2	14	2	2 3/8	2 3/16
3	17 1/2	11 1/2	14	2 3/16	2 1/6	2 5/16
4	17 1/2	11 1/2	14	2 1/6	2 5/16	2 3/16
5	17 1/2	11 1/2	14	2 1/6	2 5/16	2 3/16
6	17 1/2	11 1/2	14	1 5/16	2 3/16	2 3/16

Bottom Plate @ Pier #2 (Exp.)

Beam No.	A	B	C	D	E	F	Grinding Req'd
1	27 3/4	13	23	0	9/16	5/16	* 3/16
2	27 3/4	13	23	0	9/16	5/16	* 3/16
3	27 3/4	13	23	1/6	1/6	1/4	
4	27 3/4	13	23	0	1/6	1/4	* 1/8
5	27 3/4	13	23	0	1/6	3/16	* 1/16
6	27 3/4	13	23	0	3/16	3/16	* 1/4

* Existing top surface of Pier # 2 need to be ground under proposed bottom plate to the thickness shown.

Notes:
Anchor bolts shall be ASTM F1554 all-thread (or an Engineer-approved alternate material) of the grade(s) and diameter(s) specified. ASTM A307 Grade C anchor bolts may be used in lieu of ASTM F1554 Grade 36 (Fy=36ksi). The corresponding specified grade of AASHTO M314 anchor bolts may be used in lieu of ASTM F1554.
Anchor bolts at fixed bearings may be either cast in place or installed in holes drilled after the supported member is in place.
Anchor bolts for side retainers may be cast in place or installed in holes drilled before or after members are in place.
Drilled and set anchor bolts shall be installed according to Article 521.06 of the Standard Specifications.
Side retainers and other steel members required for the bearing assembly shall be included in the cost of Elastomeric Bearing Assembly, Type I.

The structural steel plates of the Bearing Assembly shall conform to the requirements of AASHTO M 270 Grade 36.

Two 1/8 in. adjusting shims shall be provided for each bearing in addition to all other plates or shims and placed as shown on bearing details.

Notes: Anchor bolts at fixed bearings may be built into the masonry.

BILL OF MATERIAL

Item	Unit	Total
Erecting Elastomeric Bearing Assembly Type I	Each	18
Anchor bolts 1"	Each	24
Anchor bolts 1 1/4"	Each	24

DESIGNED	NDS/GMK
CHECKED	MTP/SMK/GBC
DRAWN	NDS/GMK
CHECKED	SMK/GBC

ILLINOIS DEPARTMENT OF TRANSPORTATION

BEARING DETAILS

FAP 846
SB IL. ROUTE 53 OVER PRAIRIE CREEK
STATION 1305+00 SECTION 4B-1-R
WILL COUNTY
STRUCTURE NO. 099-0242
SCALE: NONE
DATE: AUGUST 2007

DELT ENGINEERING INC.
CONSULTING ENGINEERS, CHICAGO, ILLINOIS.