

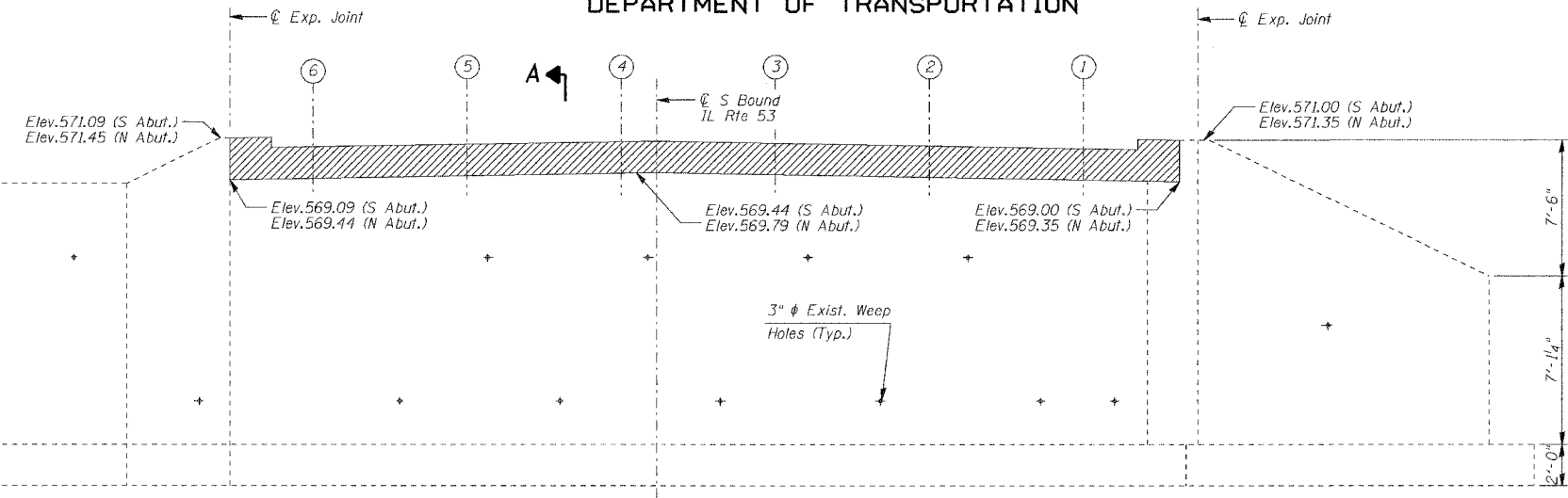
STATE OF ILLINOIS
DEPARTMENT OF TRANSPORTATION

ROUTE NO.	SECTION	COUNTY	SHEET NO.	SHEET NO.
846	4B-1-R	WILL	87	58
FED. ROAD DIST. NO. 7		ILLINOIS	FED. AID PROJECT	

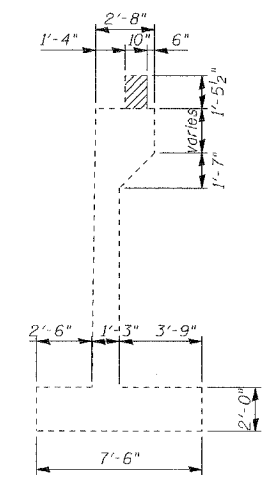
SHEET NO. S10
SHEETS S17

CONTRACT NO. 62269

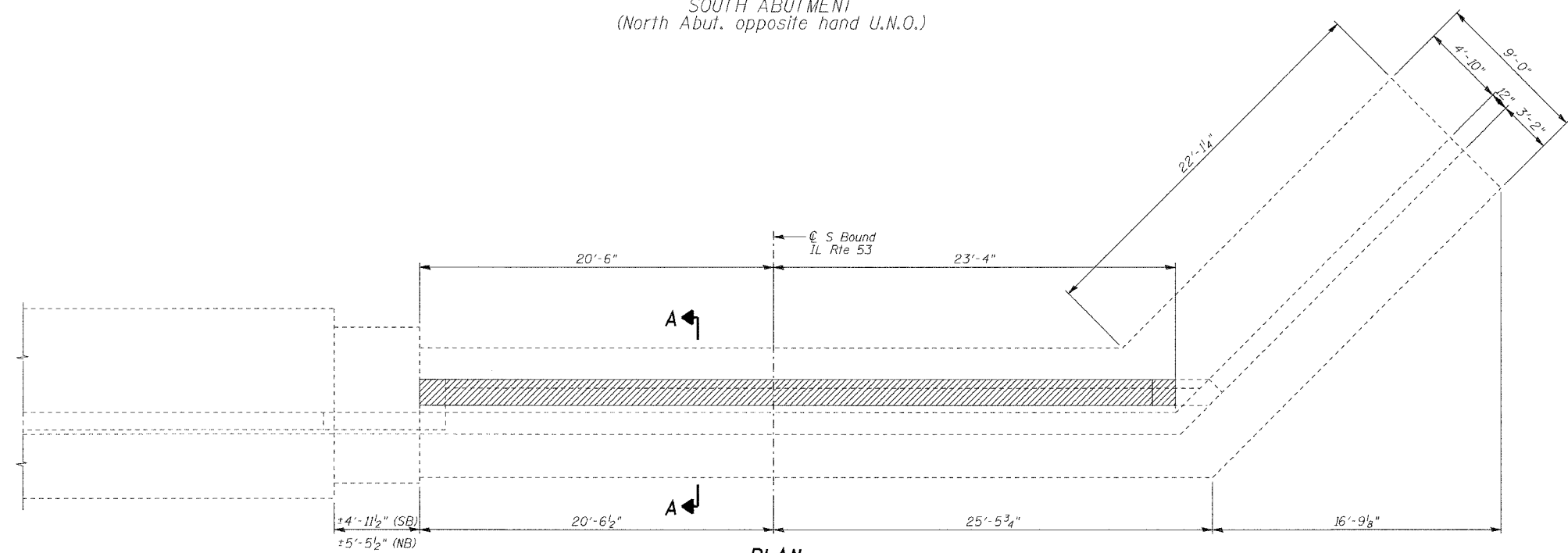
MATCH LINE SEE SHT. NO. S11
STR. NO. 099-0090 FOR S. ABUT.
AND SEE SHT. NO. S12
STR. NO. 099-0090 FOR N. ABUT.



ELEVATION
SOUTH ABUTMENT
(North Abut. opposite hand U.N.O.)



SECTION A-A

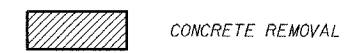


PLAN
SOUTH ABUTMENT
(North Abut. opposite hand U.N.O.)

NOTES:

- Concrete removal shall be accomplished by methods that will not damage the existing Abutments and Piers.
- Any reinforcement bars that are damaged during concrete removal operations shall be repaired or replaced using an approved bar splicer or anchorage system. Cost included in the pay item for Concrete Removal.

LEGEND:



BILL OF MATERIAL

PAY ITEM	UNIT	S. ABUT.	N. ABUT.	TOTAL
CONCRETE REMOVAL	Cu yd	2.5	2.5	5.0

DESIGNED	NDS/GMK
CHECKED	MTP/SMK/GBC
DRAWN	NDS/GMK
CHECKED	SMK/GBC

ILLINOIS DEPARTMENT OF TRANSPORTATION
CONCRETE REMOVAL DETAILS
FAP 846
SB IL. ROUTE 53 OVER PRAIRIE CREEK
STATION 1305+00 SECTION 4B-1-R
WILL COUNTY
STRUCTURE NO. 099-0242
SCALE: NONE
DATE: AUGUST 2007
DELTA ENGINEERING INC.
CONSULTING ENGINEERS, CHICAGO ILLINOIS