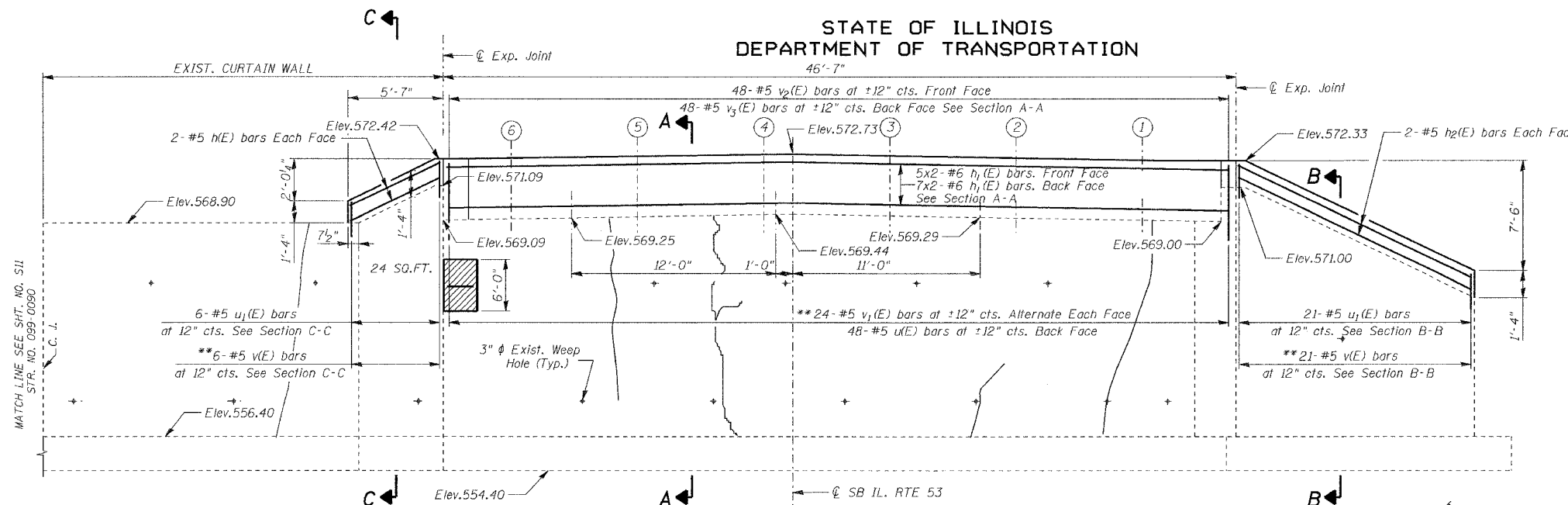


STATE OF ILLINOIS
DEPARTMENT OF TRANSPORTATION

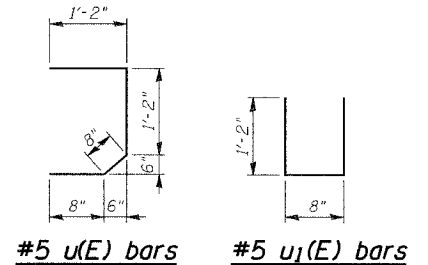
ROUTE NO.	SECTION	COUNTY	TOTAL SHEETS	SHEET NO.	SHEET NO. 511 SHEETS 517
F. A. P. 846	4B-1-R	WILL	87	59	
FED. ROAD DIST. NO. 7	ILLINOIS	FED. AID PROJECT			

CONTRACT NO. 62269



ELEVATION
(Looking South)

** Drill and grout #5 v(E) and #5 vj(E) bars in 7/8" dia. x 12" min. drilled holes according to Article 584 of the Standard Specifications.



BILL OF MATERIAL

Bar	No.	Size	Length	Shape	
h(E)	4	#5	5'-9"	—	
h1(E)	24	#6	24'-6"	—	
h2(E)	4	#5	20'-10"	—	
v(E)	31	#5	2'-5"	—	
v1(E)	48	#5	4'-2"	—	
v2(E)	48	#5	2'-8"	—	
vj(E)	48	#5	3'-8"	U	
uj(E)	27	#5	3'-0"	U	
Reinforcement Bars, Epoxy Coated				Pound	1,920
Concrete Structures				Cu yd	9.0
Structural Repair of Concrete (Depth greater than 5")				Sq ft	24.0

MINIMUM BAR LAP

#5 bar = 2'-2"
#6 bar = 2'-7"

MINIMUM EMBEDMENT

#5 bar = 12"

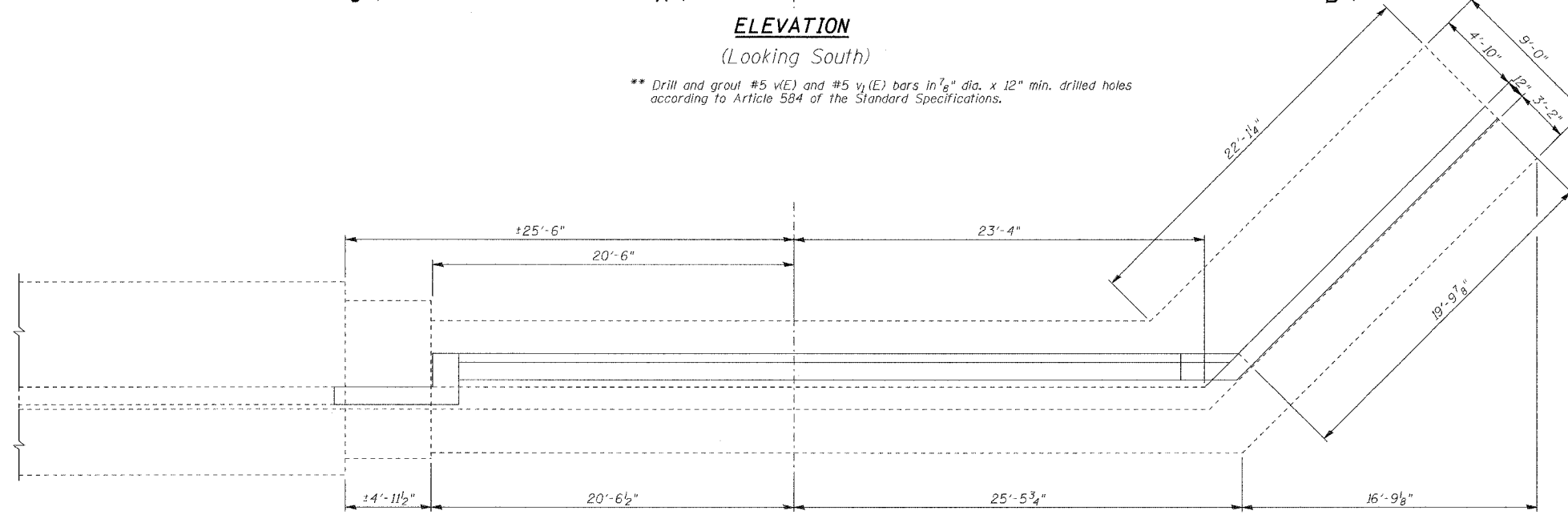
LEGEND:

HAIRLINE CRACK (CRACK < 1/16" WIDE)
NOT TO BE SEALED

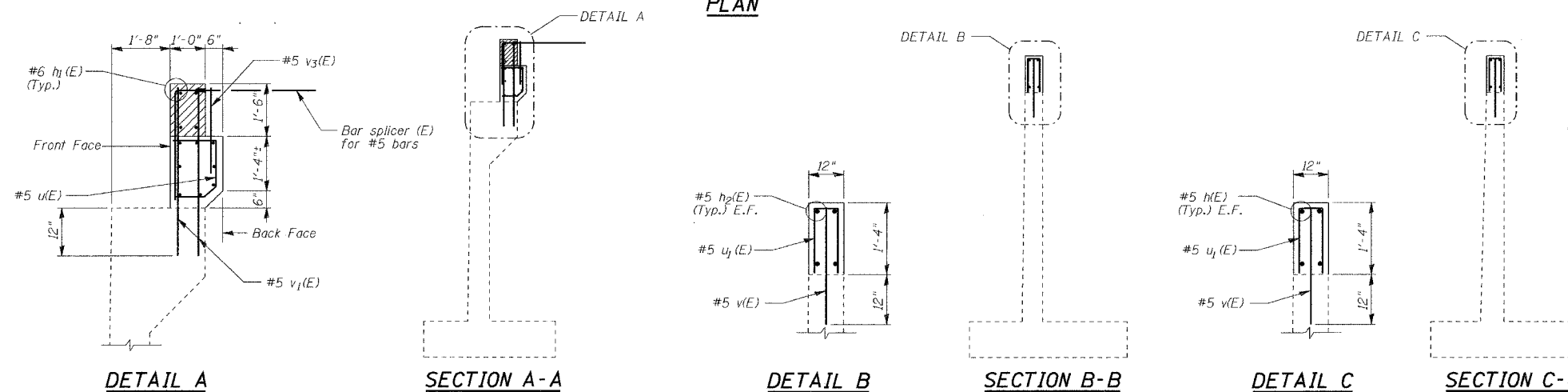
SPALL WITH EXPOSED REBAR
Structural Repair of Concrete
(Depth greater than 5")

NOTES:

- Concrete removal shall be accomplished by methods that will not damage the existing Abutments and Piers.
- Any reinforcement bars that are damaged during concrete removal operations shall be repaired or replaced using an approved bar splicer or anchorage system.
Cost Included in the pay item for Concrete Removal.



PLAN



DESIGNED	NDS/GMK
CHECKED	MTP/SMK/GBC
DRAWN	NDS/GMK
CHECKED	SMK/GBC

ILLINOIS DEPARTMENT OF TRANSPORTATION
**SOUTH ABUTMENT
REPAIRS & EXTENSION**
FAP 846
SB IL. ROUTE 53 OVER PRAIRIE CREEK
STATION 1305+00 SECTION 4B-1-R
WILL COUNTY
STRUCTURE NO. 099-0242
SCALE: NONE
DATE: AUGUST 2007
DEI DELTA ENGINEERING INC.
CONSULTING ENGINEERS, CHICAGO, ILLINOIS