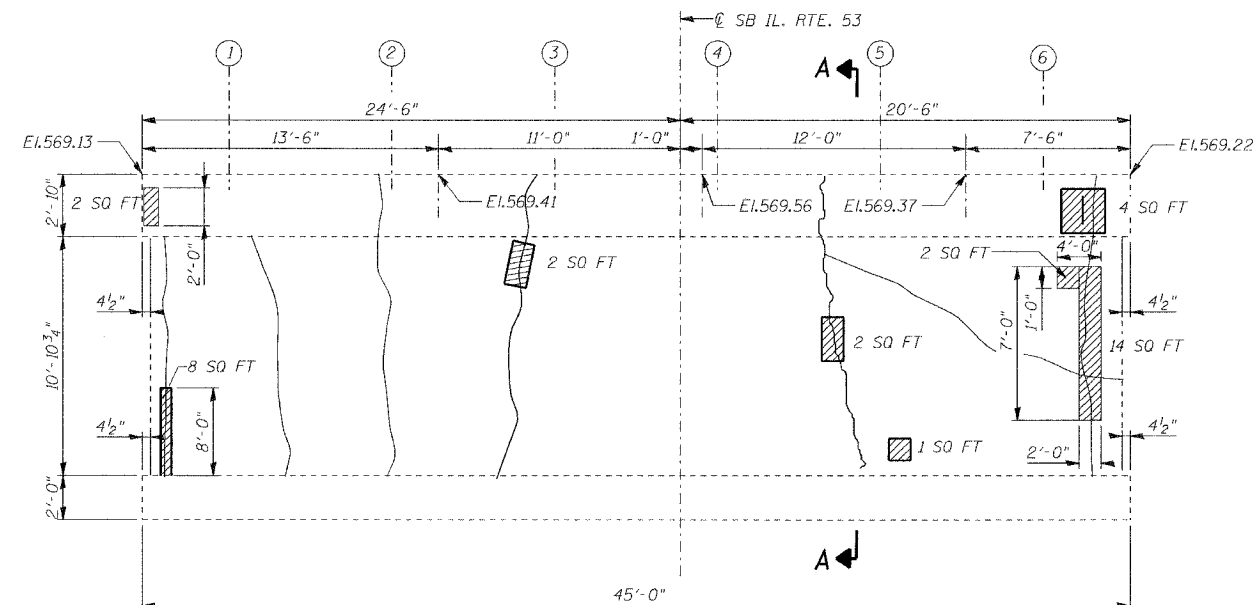


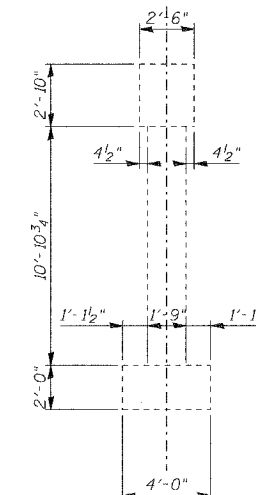
STATE OF ILLINOIS
DEPARTMENT OF TRANSPORTATION

ROUTE NO. F. A. P. 846	SECTION 4B-1-R	COUNTY WILL	DISTRICT 87	SHEET NO. 61	SHEET NO. S13 SHEETS S17
FED. ROAD DIST. NO. 7		ILLINOIS		FED. AID PROJECT	

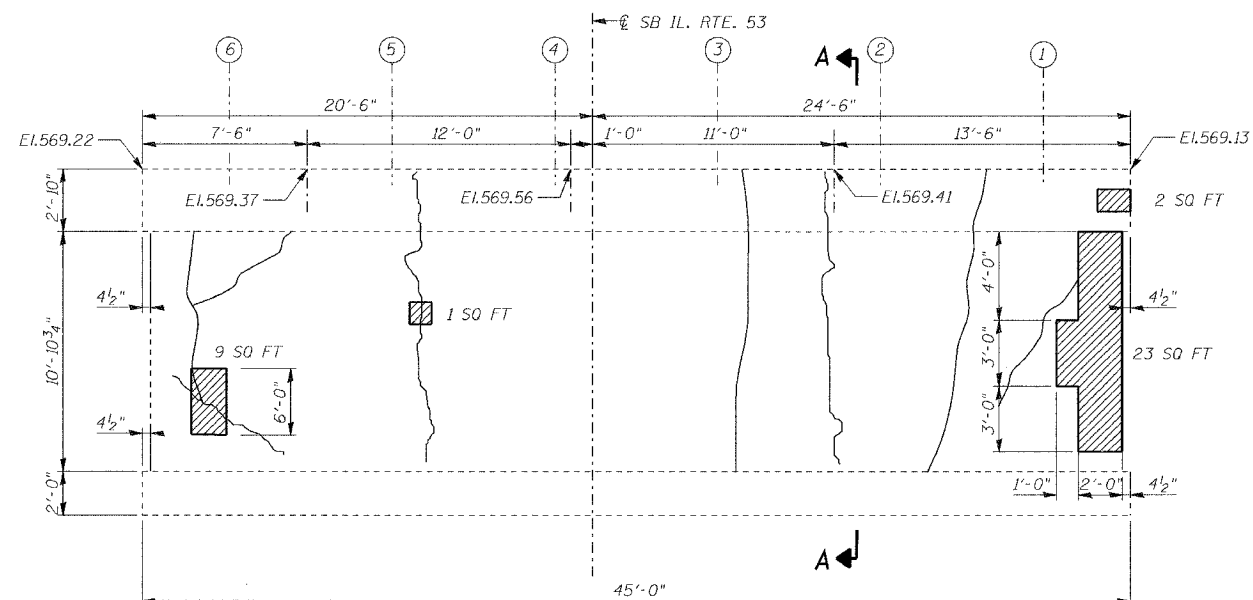
CONTRACT NO. 62269



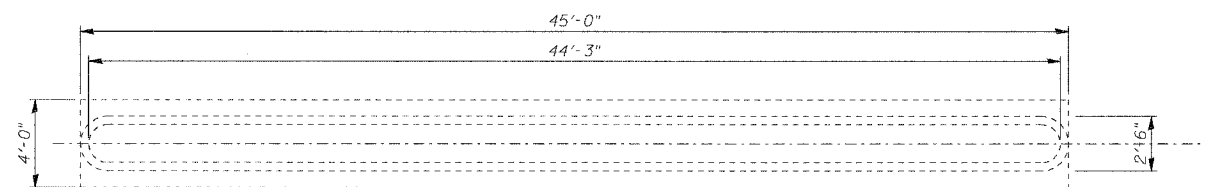
SOUTH ELEVATION
(Looking North)



SECTION A-A



NORTH ELEVATION
(Looking South)



PLAN - EXISTING

BILL OF MATERIAL

PAY ITEM	UNIT	S. ELEV.	N. ELEV.	TOTAL
STRUCTURAL REPAIR OF CONCRETE (DEPTH EQUAL TO OR LESS THAN 5")	SQ FT	31.0	35	66.0
STRUCTURAL REPAIR OF CONCRETE (DEPTH GREATER THAN 5")	SQ FT	4.0	0	4.0

LEGEND:

- HAIRLINE CRACK (CRACK <math>< \frac{1}{16}</math> WIDE) NOT TO BE SEALED
- STRUCTURAL REPAIR OF CONCRETE (DEPTH EQUAL TO OR LESS THAN 5 INCHES)
- SPALL WITH EXPOSED REBAR
STRUCTURAL REPAIR OF CONCRETE (DEPTH GREATER THAN 5")

NOTES:

1. Concrete removal shall be accomplished by methods that will not damage the existing Abutments and Piers.
2. Any reinforcement bars that are damaged during concrete removal operations shall be repaired or replaced using an approved bar splicer or anchorage system. Cost included in the pay item for Concrete Removal.

DESIGNED	NDS/GMK
CHECKED	MTP/SMK/GBC
DRAWN	NDS/GMK
CHECKED	SMK/GBC

ILLINOIS DEPARTMENT OF TRANSPORTATION	
PIER No. 1 - REPAIRS	
FAP 846	
SB IL. ROUTE 53 OVER PRAIRIE CREEK	
STATION 1305+00 SECTION 4B-1-R	
WILL COUNTY	
STRUCTURE NO. 099-0242	
SCALE: NONE	
DATE: AUGUST 2007	
	DELTA ENGINEERING INC. CONSULTING ENGINEERS, CHICAGO, ILLINOIS