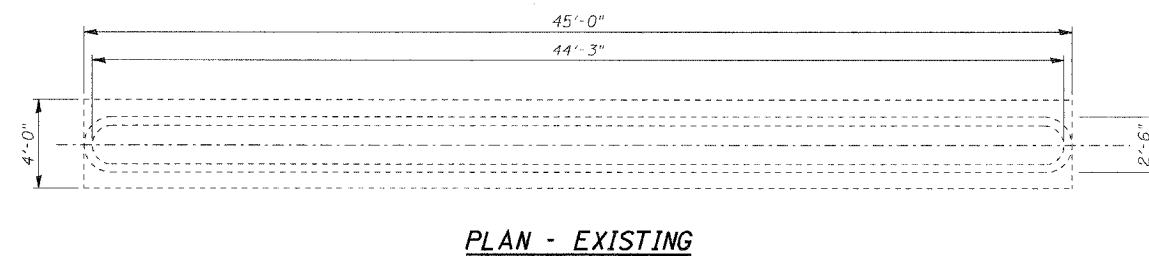
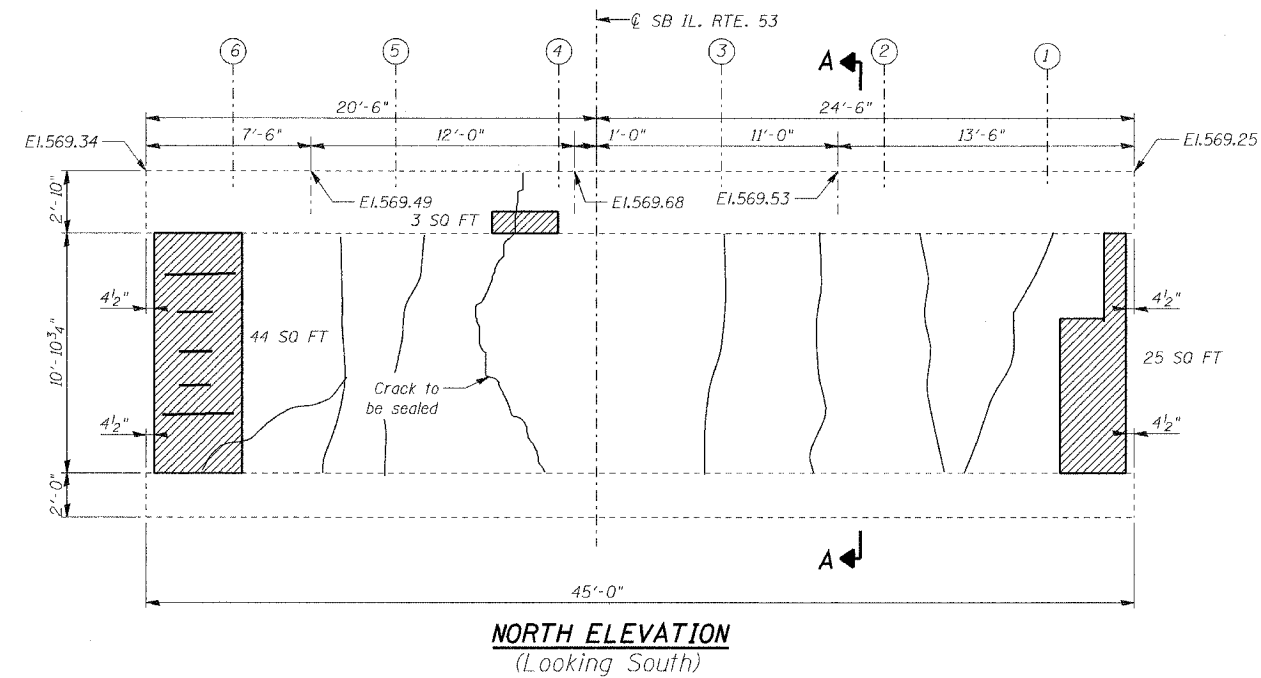
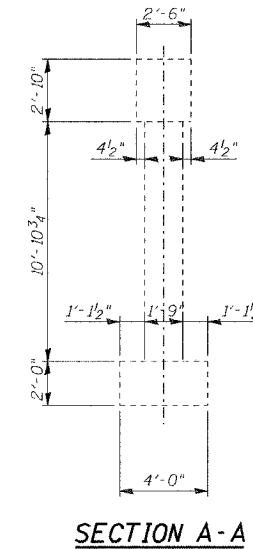
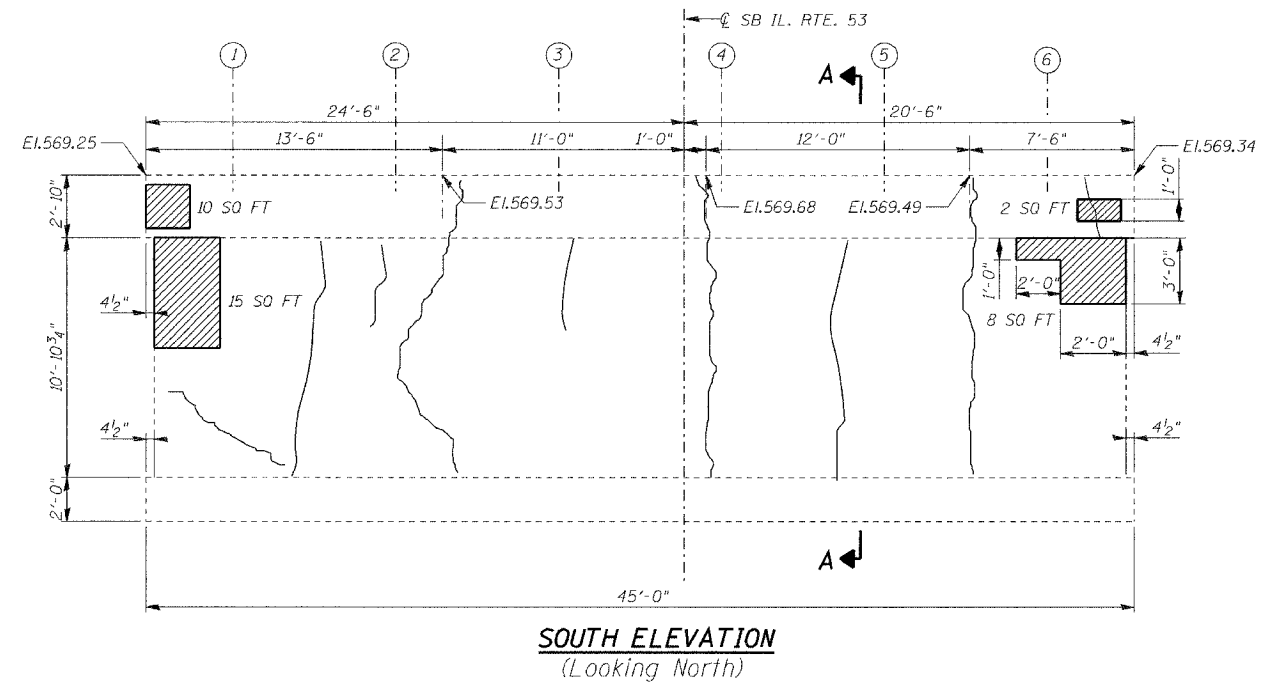


STATE OF ILLINOIS
DEPARTMENT OF TRANSPORTATION

ROUTE NO. 846	SECTION 4B-1-R	COUNTY WILL	SHEET NO. 67	SHEET NO. 62	SHEET NO. S14
FED. ROAD DIST. NO. 7					ILLINOIS
FED. AID PROJECT					CONTRACT NO. 62269
					SHEETS S17



BILL OF MATERIAL

PAY ITEM	UNIT	S. ELEV.	N. ELEV.	TOTAL
STRUCTURAL REPAIR OF CONCRETE (DEPTH EQUAL TO OR LESS THAN 5")	SQ FT	35.0	28.0	63.0
STRUCTURAL REPAIR OF CONCRETE (DEPTH GREATER THAN 5")	SQ FT	0.0	44.0	44.0
EPOXY CRACK INJECTION	FOOT	0.0	15.0	15.0

LEGEND:

- HAIRLINE CRACK (CRACK <math>< \frac{1}{16}</math> WIDE, NOT TO BE SEALED UNLESS NOTED OTHERWISE)
- STRUCTURAL REPAIR OF CONCRETE (DEPTH EQUAL TO OR LESS THAN 5 INCHES)
- SPALL WITH EXPOSED REBAR
STRUCTURAL REPAIR OF CONCRETE (DEPTH GREATER THAN 5")

NOTES:

1. Concrete removal shall be accomplished by methods that will not damage the existing Abutments and Piers.
2. Any reinforcement bars that are damaged during concrete removal operations shall be repaired or replaced using an approved bar splicer or anchorage system. Cost included in the pay item for Concrete Removal.

DESIGNED	NDS/GMK
CHECKED	MTP/SMK/GBC
DRAWN	NDS/GMK
CHECKED	SMK/GBC

ILLINOIS DEPARTMENT OF TRANSPORTATION

PIER No. 2 - REPAIRS

FAP 846
SB IL. ROUTE 53 OVER PRAIRIE CREEK
STATION 1305+00 SECTION 4B-1-R
WILL COUNTY
STRUCTURE NO. 099-0242

SCALE: NONE
DATE: AUGUST 2007

DELTA ENGINEERING INC.
CONSULTING ENGINEERS, CHICAGO, ILLINOIS.