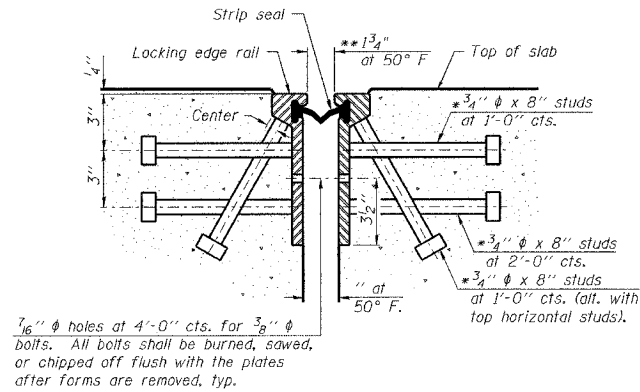


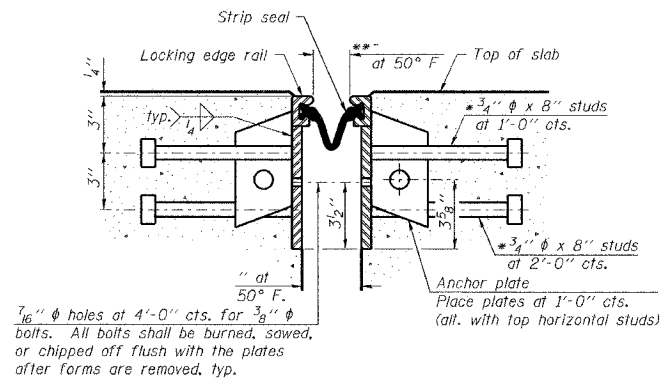
STATE OF ILLINOIS  
DEPARTMENT OF TRANSPORTATION

ROUTE NO.	SECTION	COUNTY	TOTAL SHEETS	SHEET NO.	SHEET NO. S15
F. A. P. 846	4B-1-R	WILL	86	63	SHEETS S17
FED. ROAD DIST. NO. 7	ILLINOIS	FED. AID PROJECT	CONTRACT NO. 62269		

- \* Granular or solid flux filled headed studs conforming to Article 1006.32 of the Std. Specs., automatically end welded.
- \*\* When joint is fixed, dimension is set at 1 1/2".

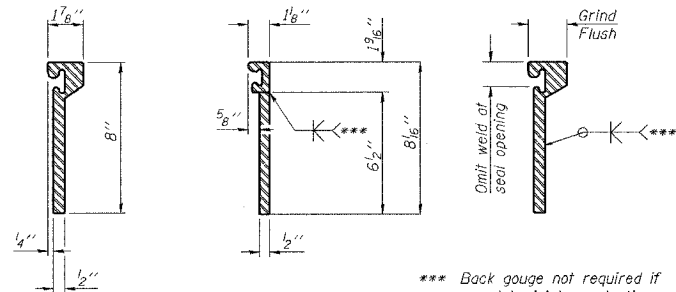


**SECTION THRU  
ROLLED RAIL JOINT**



**SECTION THRU  
WELDED RAIL JOINT**

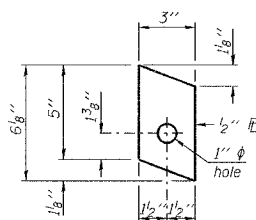
Notes:  
The strip seal shall be made continuous and shall have a minimum thickness of 1/4". The configuration of the strip seal shall match the configuration of the Locking Edge Rails. Open or "webbed" strip seal gland configurations are not permitted. The gland shall be sized for a maximum rated movement of 4 inches. The height and thickness of the Locking Edge Rails shown are minimum dimensions. The actual configuration of the Locking Edge Rails and matching strip seal may vary from manufacturer to manufacturer. Flanged edge rails will not be allowed. Locking Edge Rails may be spliced at slope discontinuities and stage construction joints. The manufacturer's recommended installation methods shall be followed. The joint opening and deck dimensions detailed on the superstructure are based on a rolled rail expansion joint. If the Contractor elects to use the welded rail expansion joint, the opening and deck dimensions shall be modified according to the dimensions detailed on this sheet. Required modifications shall be made at no additional cost to the State. All steel components shall be galvanized after fabrication according to Article 520.03 of the Standard Specifications.



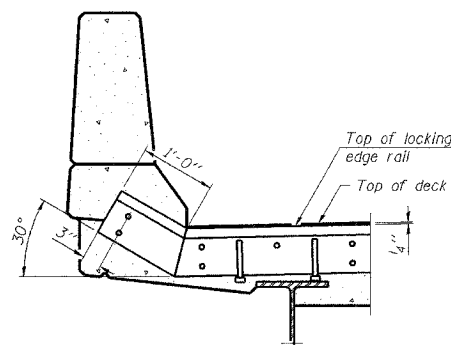
**ROLLED  
(EXTRUDED) RAIL    WELDED RAIL**

**LOCKING EDGE  
RAIL SPLICE**

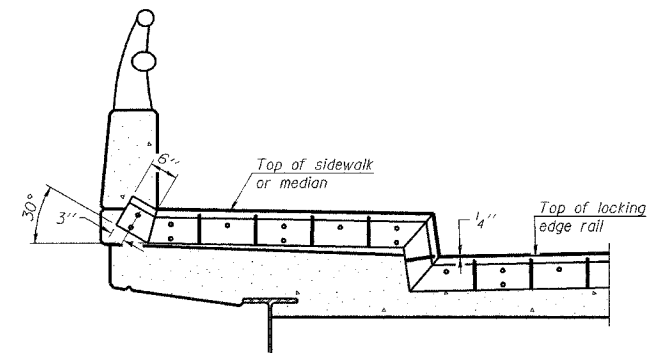
The inside of the locking edge rail groove shall be free of weld residus.



**ANCHOR PLATE  
(for welded rail)**



**AT PARAPET**

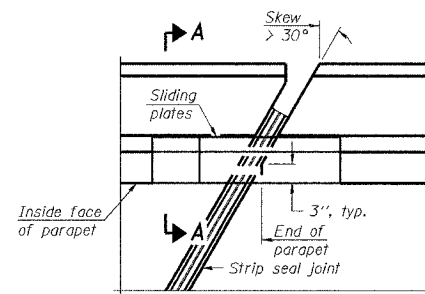


**AT SIDEWALK OR MEDIAN**

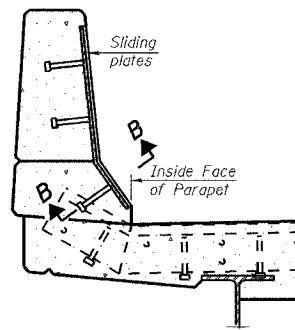
Shorter plates with a single row of studs at 12" cts. may be necessary on medians which are shallower than 9". See manufacturer's recommendation.

**TYPICAL END TREATMENTS**

**LOCKING EDGE RAILS**

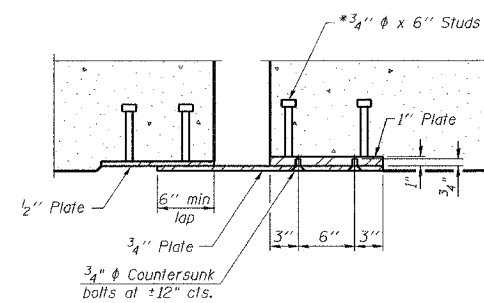


**PLAN**



**SECTION A-A**

**POINT BLOCK DETAILS  
(for skews > 30°)**



**SECTION B-B**

**BILL OF MATERIAL**

Item	Unit	Total
Preformed Joint Strip Seal	Foot	87

DESIGNED	NDS/GMK
CHECKED	MTP/SMK/GBC
DRAWN	NDS/GMK
CHECKED	SMK/GBC

EJ-SSJ 11-1-06

ILLINOIS DEPARTMENT OF TRANSPORTATION

**PREFORMED JOINT STRIP SEAL**

FAP 846  
SB IL. ROUTE 53 OVER PRAIRIE CREEK  
STATION 1305+00 SECTION 4B-1-R  
WILL COUNTY

STRUCTURE NO. 099-0242

SCALE: NONE  
DATE: AUGUST 2007

**DEI** DELTA ENGINEERING INC.  
CONSULTING ENGINEERS, CHICAGO, ILLINOIS