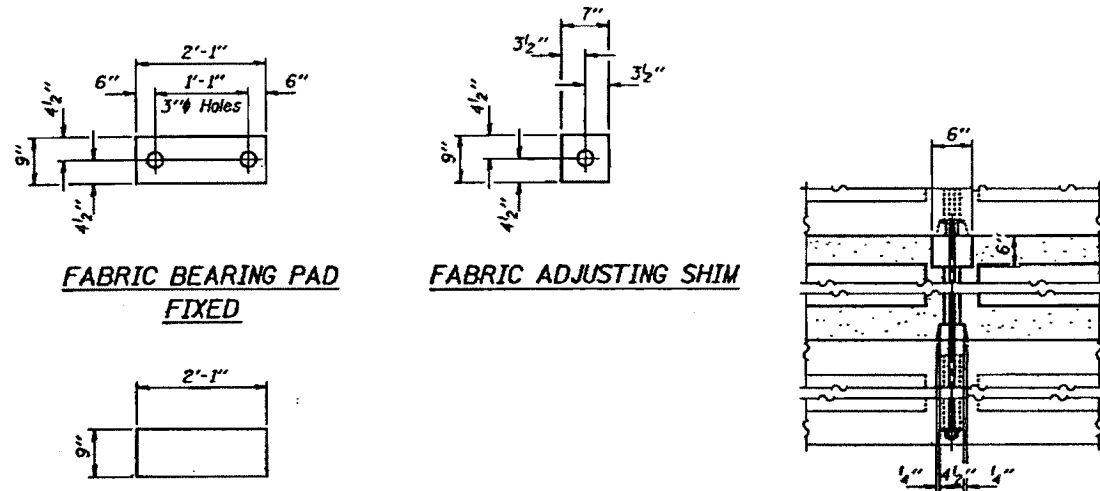


STATE OF ILLINOIS
DEPARTMENT OF TRANSPORTATION

DATE	BY	CHKD	DATE	SHEET NO.
				2
WILL				5 4
				3 SHEETS

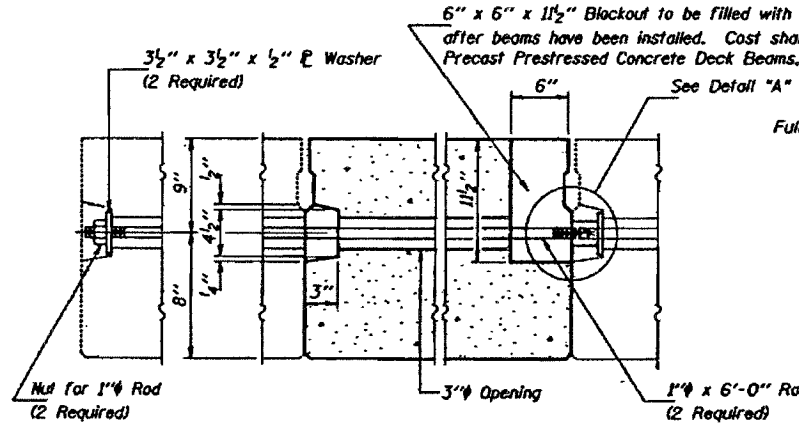
SHEET NO. 65C



FABRIC BEARING PAD
FIXED

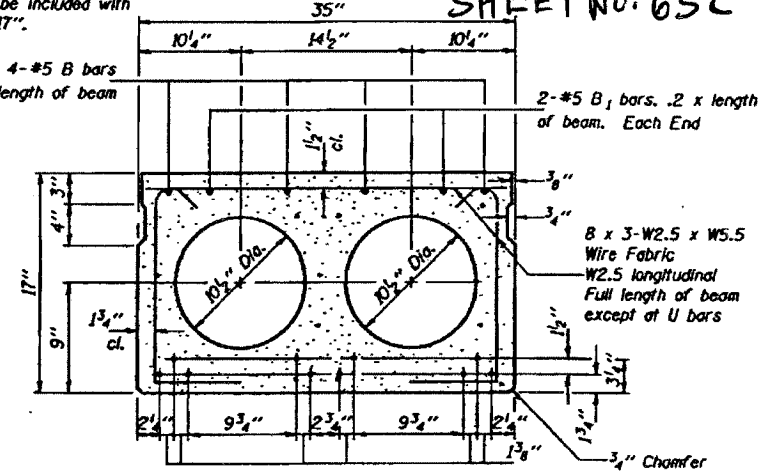
FABRIC ADJUSTING SHIM

FABRIC BEARING PAD
EXPANSION



TYPICAL TRANSVERSE TIE ASSEMBLY

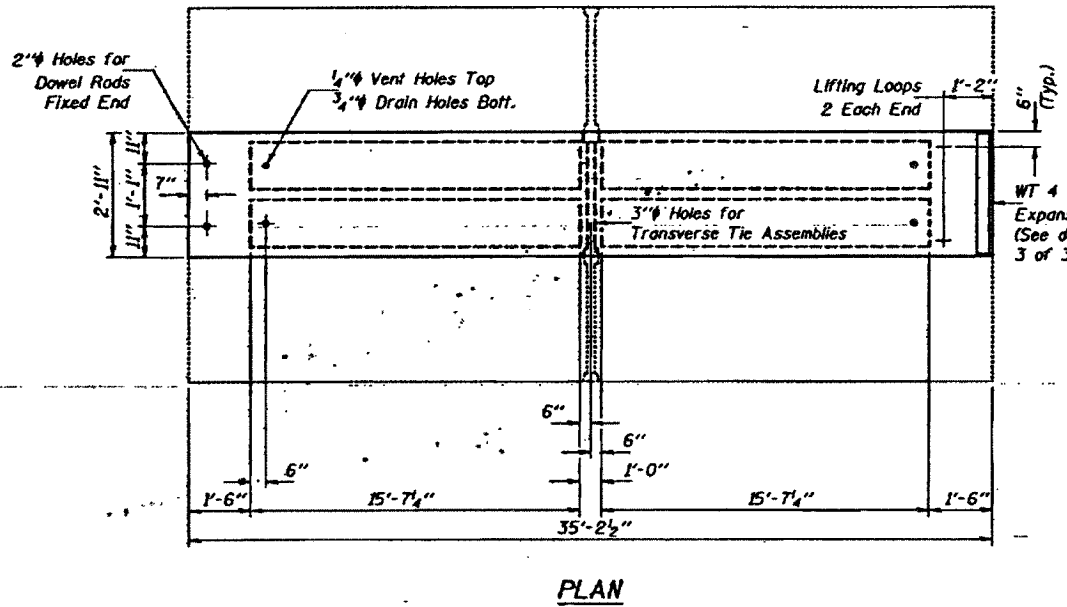
Note: Existing grout covering existing nuts for transverse tie assemblies shall be removed. Existing rods shall be cut as detailed on sheet 1 of 3. Existing rods shall then be removed through holes in exterior beams. Cast included with Removal of Existing PPC Deck Beams.



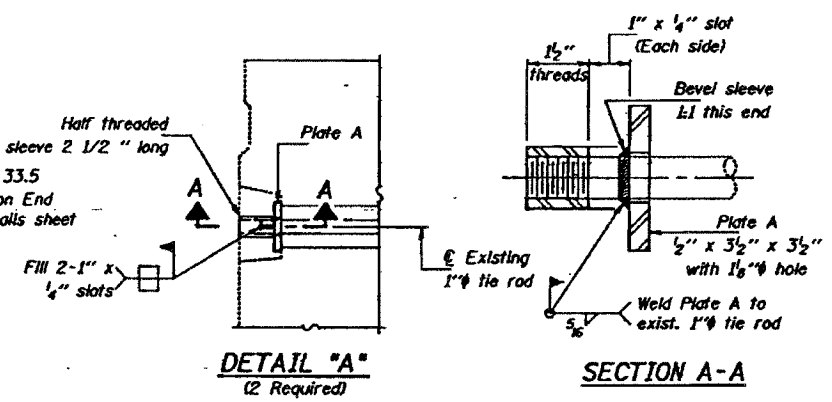
TYPICAL SECTION

10-1/2" Strands, Each Strand Stressed to 28,900 Lbs.
6-Strands 1 3/4" up, 4-Strands 3 1/4" up

Note: Place strands symmetrically about ϵ of beam.

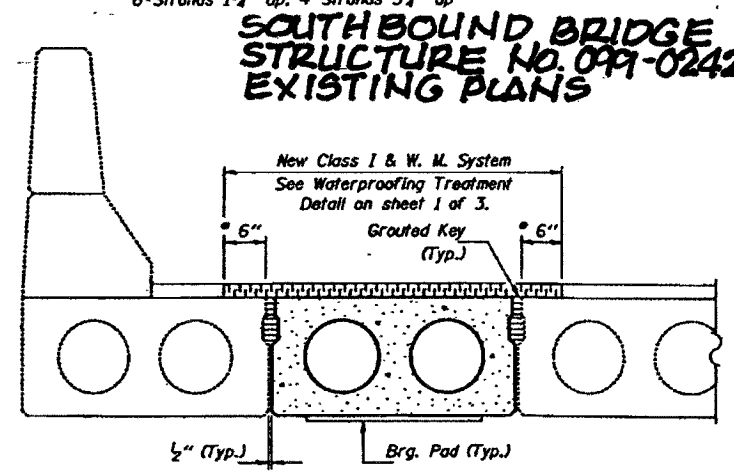


PLAN



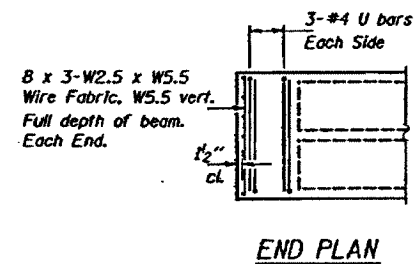
DETAIL "A"
(2 Required)

SECTION A-A

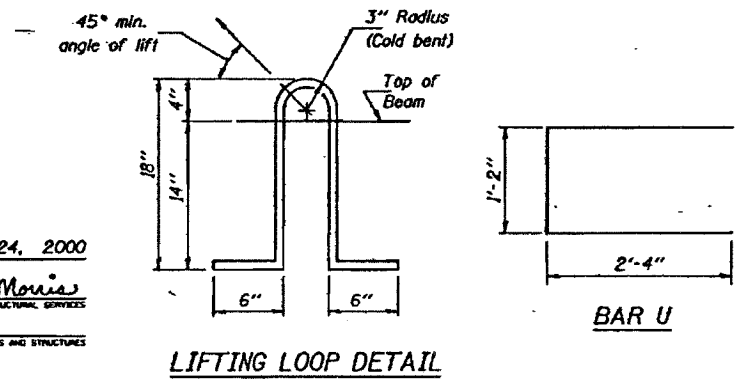


PARTIAL CROSS SECTION

* Limits of Bituminous Concrete Surface Removal



END PLAN



LIFTING LOOP DETAIL

BAR U

PLATE A

NOTES

Prestressing steel shall be uncoated high strength, stress-relieved 7-wire strand, Grade 270. The nominal diameter shall be 1/2" and the nominal cross-sectional area shall be 0.153 sq. in. Lifting loops shall be 2-1/2" #270 ksi strands, as shown. The 1" rods in the transverse tie assembly shall be tightened to a snug fit and the threads set. Pockets that receive transverse tie bar on outside shall be filled with grout after transverse tie assembly is in place. Reinforcement bars shall conform to the requirements of AASHTO M-31, M-42 or M-53 Grade 60. The bearing seat surfaces shall be adjusted by shimming to assure firm and even bearing. Two 1/8" fabric adjusting shims of the dimensions shown shall be provided for each bearing. Keyway surfaces shall be cleaned to remove form oil or other bond breaking material prior to shipment of the beams. Cleaning shall be done by sandblasting the keyway areas between top of the beam and the bottom edge of the key. A Corrosion Inhibitor, as covered in the Special Provisions, shall be used in the concrete for precast prestressed concrete deck beams. Required Release Strength, f'ci, shall be 4000 p.s.i. An equal substitution of the low-relaxation strands for the stress-relieved strands will be permitted.

BILL OF MATERIAL

Bar	No.	Size	Length	Shape
Precast Prestressed Conc. Deck Bms. (17')		Sq. Ft.	103	

BRIDGE REPAIRS
F.A. RT. 846 SEC. 48-1-R
WILL COUNTY
S.N. 099-0242

DESIGNED K.P.S. FEBRUARY 24, 2000
CHECKED V.H.V. EXAMINED John A. Moris
DRAWN John F. Schueller Jr. PASSED
CHECKED K.P.S. V.H.V. ENGINEER OF BRIDGES AND STRUCTURES

FOR REFERENCE ONLY