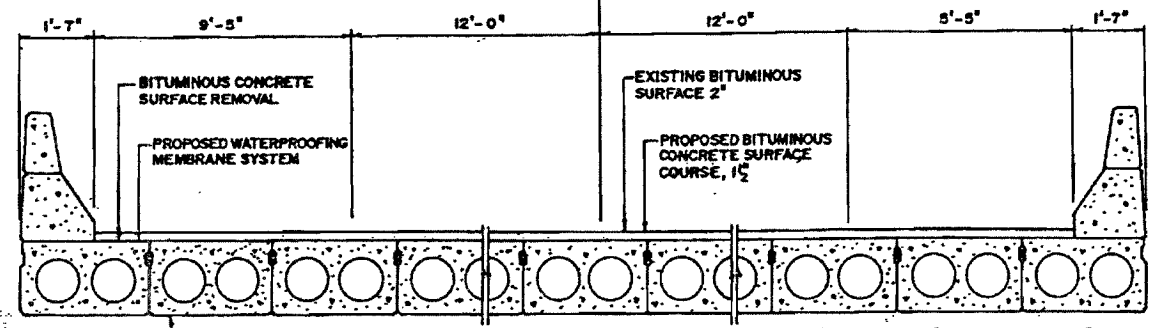
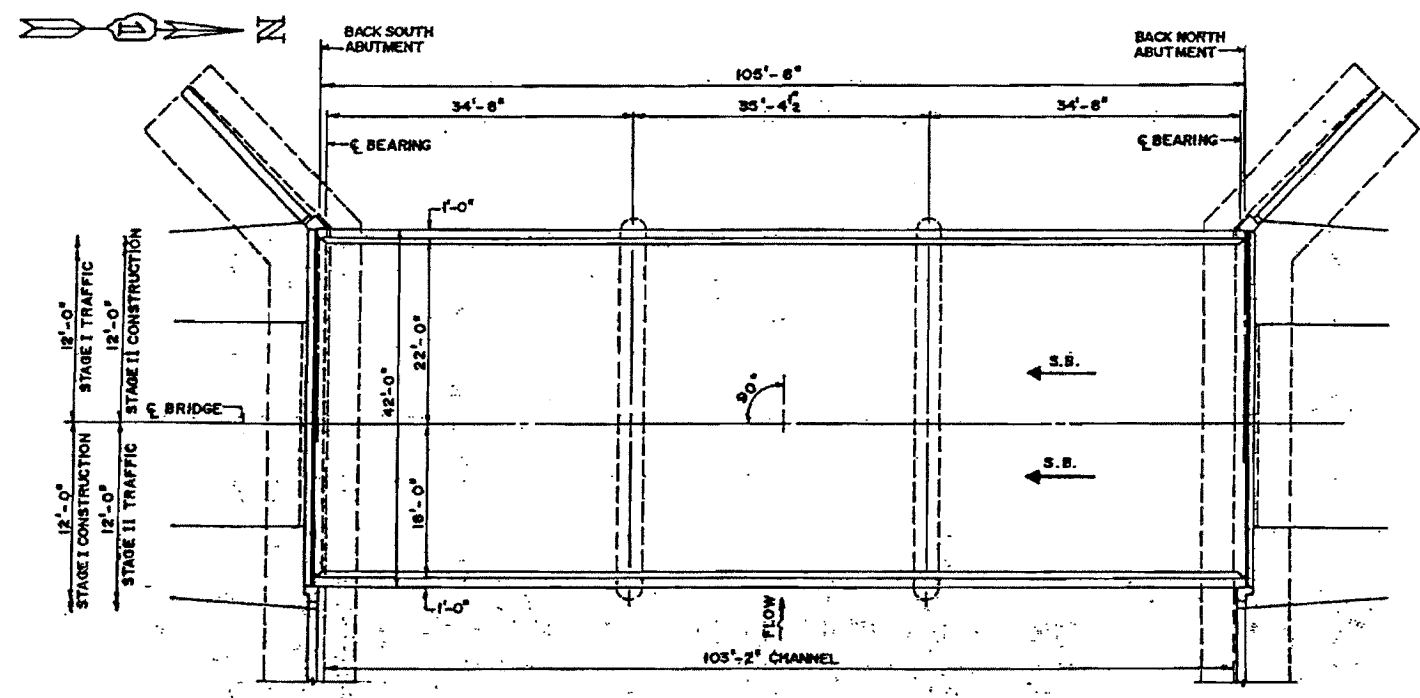
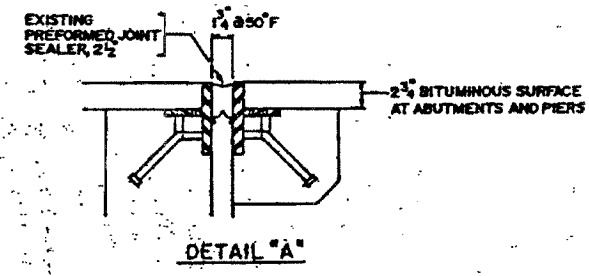
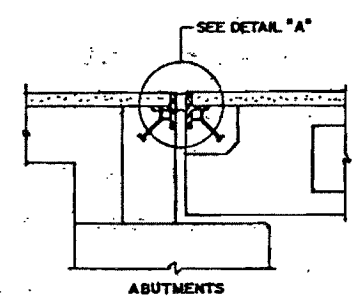
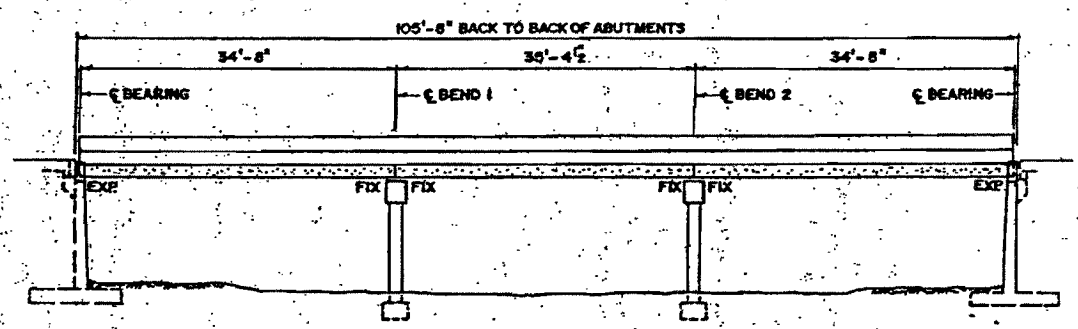


SECTION	COUNTY	TOTAL SHEETS	SHEET NO.
846 (284R-RS-5)	WILL	22	14
STA.	TO STA.	ILLINOIS	
FOR ROAD DIST NO. 1		FOR AID PROJECT	

SHEET No. 65D



**SOUTHBOUND BRIDGE
STRUCTURE No. 099-0242
EXISTING PLANS**



BILL OF MATERIAL

ITEM	UNIT	QUANTITY
BITUMINOUS CONCRETE SURFACE REMOVAL	SQ. YD	456
WATERPROOFING MEMBRANE SYSTEM	SQ. YD	456
BITUMINOUS CONCRETE SURFACE COURSE, MIX D, CLASS I, TYPE 2	TON	40
KEYWAY REPAIR	FOOT	400

NOTES:
 PLAN DIMENSIONS AND DETAILS RELATIVE TO THE EXISTING STRUCTURE HAVE BEEN TAKEN FROM EXISTING PLANS AND ARE SUBJECT TO NOMINAL CONSTRUCTION VARIATIONS. IT SHALL BE THE CONTRACTOR'S RESPONSIBILITY TO VERIFY SUCH DIMENSIONS AND DETAILS IN THE FIELD AND MAKE NECESSARY APPROVED ADJUSTMENTS PRIOR TO ORDERING THE MATERIALS. SUCH VARIATION SHALL NOT BE CAUSE FOR ADDITIONAL COMPENSATION FOR A CHANGE IN THE SCOPE. HOWEVER, THE CONTRACTOR WILL BE PAID FOR THE QUANTITY ACTUALLY FURNISHED AT THE UNIT BID PRICE FOR THE WORK.

FOR REFERENCE ONLY

REVISIONS	
NAME	DATE
T.M. Slettery	3-11-99

ILLINOIS DEPARTMENT OF TRANSPORTATION
 ILLINOIS 53 (SOUTH BOUND)
 OVER PRAIRIE CREEK
 PLAN, ELEVATION, CROSS SECTION
 AND DETAILS
 S.N. 099-0242
 SCALE: VERT. _____ DRAWN BY MVT
 HORIZ. _____ CHECKED BY TMS
 DATE MARCH, 1999