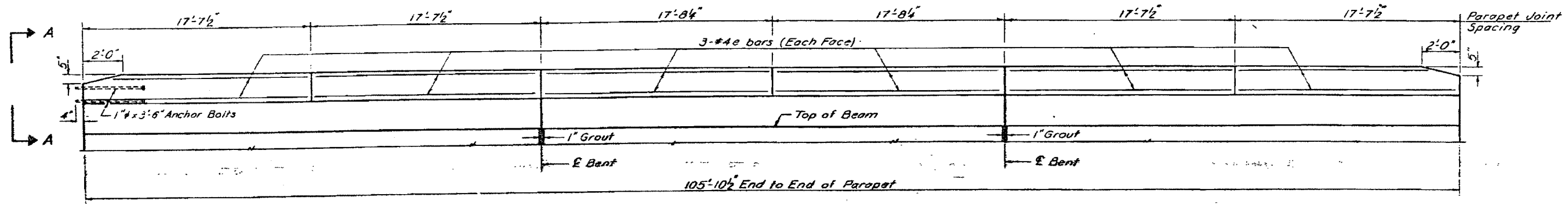


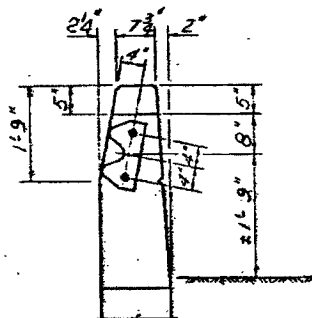
STATE OF ILLINOIS
DEPARTMENT OF TRANSPORTATION

PROJECT NO.	SECTION	QUANTITY	TOTAL QUANTITY	UNIT PRICE	TOTAL PRICE
A.A. 046	4B-1-R	WILL	32	12	
SHEET NO. 5 9 SHEETS					

SHEET NO. 65 G

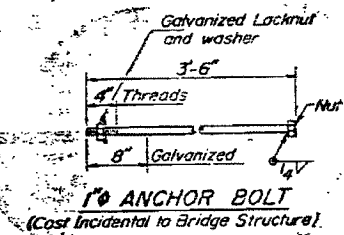


ELEVATION



VIEW A-A

The guardrail shall be transitioned to vertical position between 1st and 3rd post from the end of parapet.



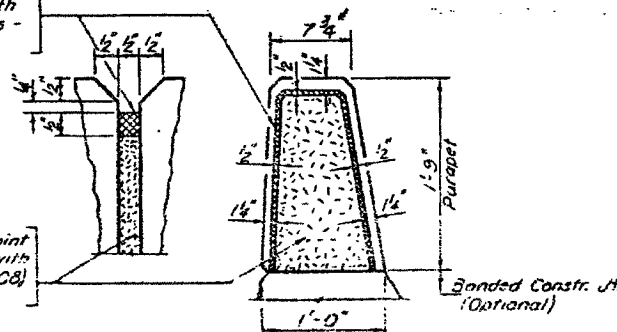
BILL OF MATERIAL

Bar	No	Size	Length	Sp. No.
e	72	#4	17'-8"	
Class X Concrete		Cu Yds.	10.0	
Reinforcement Bars		Lbs.	330	

SOUTH BOUND BRIDGE
STRUCTURE No. 009-0242
EXISTING PLANS

S.B.

Two component non-staining gray sealing compound with polysulfide liquid polymers - gun grade with primer.



PARAPET JOINT DETAIL

1/2" Preformed Cork Joint Filler (in accordance with Articles 715.07 or 715.08) Cost incidental.

FOR REFERENCE ONLY

DESIGNED	APR 23, 1975
CHECKED	
DRAWN	
EXAMINED	
PASSED	
APPROVED	

PARAPET
EA RT 5 SEC 4B-1-R
WILL COUNTY
STA 1305+00.00