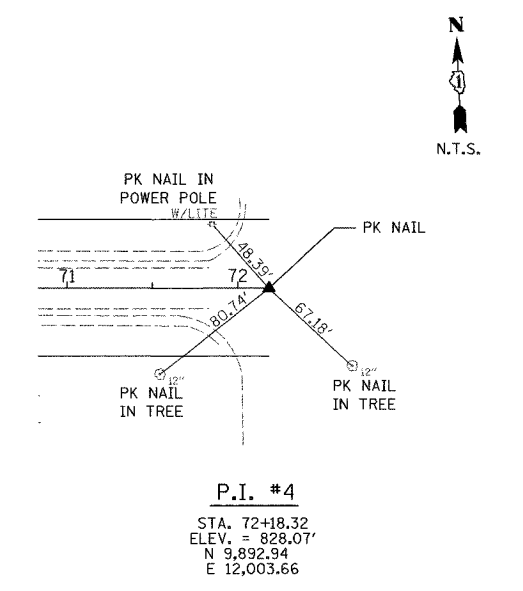
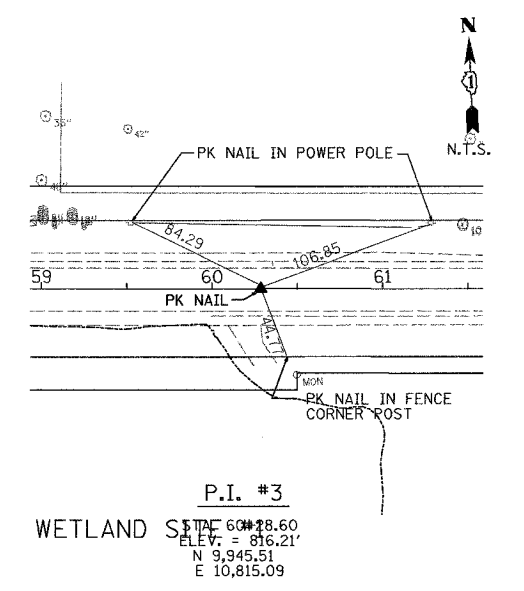
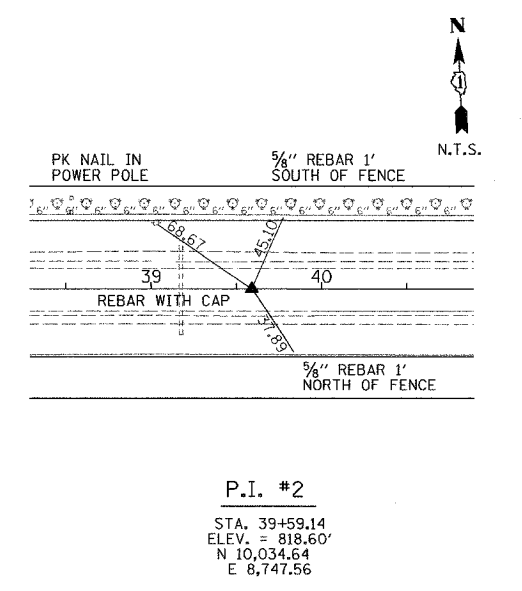
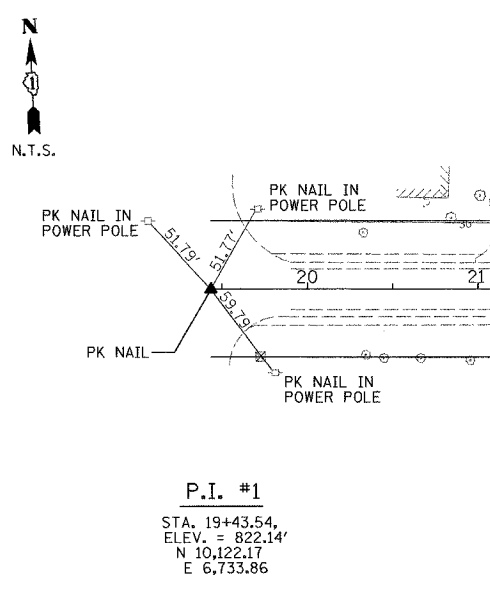
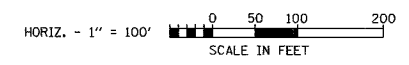
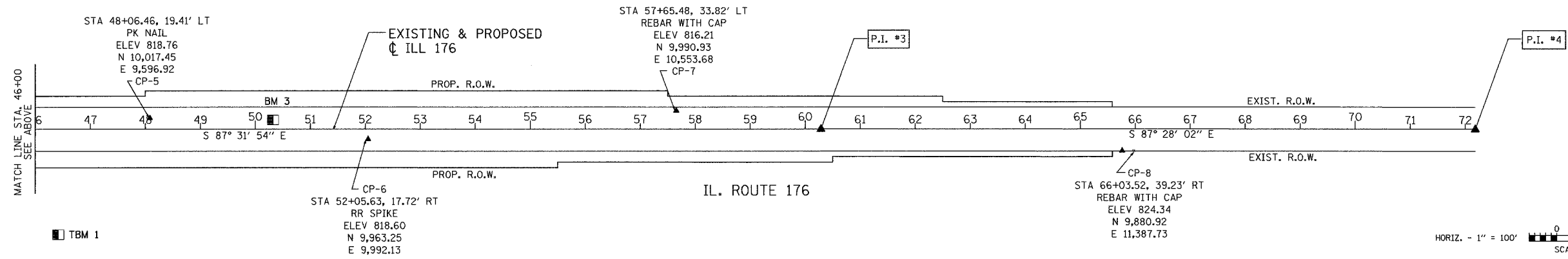
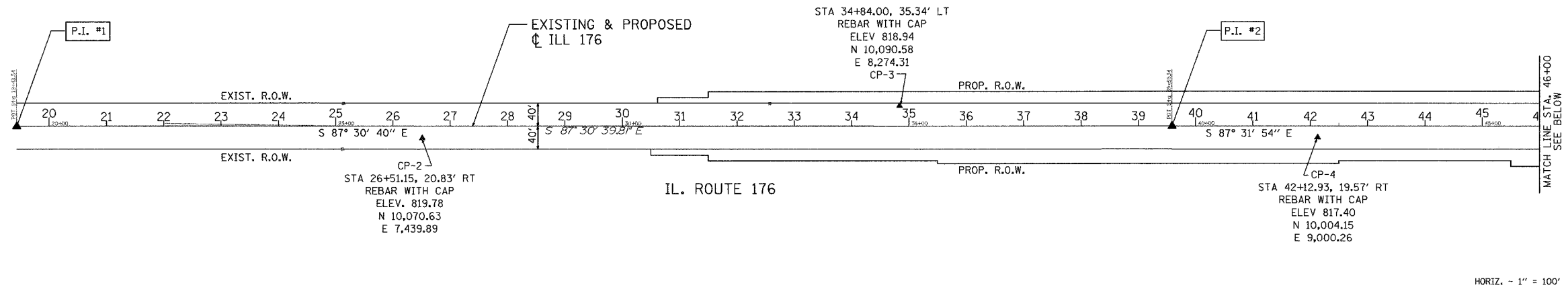


F.A. ROUTE NO.	SECTION	COUNTY	TOTAL SHEETS	SHEET NO.
533	119R-1-B	McHENRY	77	8
STA.		TO STA.		
FED. ROAD DIST. NO. 1	ILLINOIS	FED. AID PROJECT		



BENCH MARKS		
NO.	DESCRIPTION	ELEVATION
BM-3	CHISELED "C" ON TOP OF WINGWALL AT SOUTHWEST CORNER OF IL 176 BRIDGE OVER THE SOUTH BRANCH OF THE KISHWAUKEE RIVER. STA 50+30, 17' LT.	818.19
TBM-1	THE NORTHWEST CORNER OF THE TOP STEP OF HOUSE AT 18017 RTE 176 STA 46+44, 189' RT.	823.80

REVISIONS		ILLINOIS DEPARTMENT OF TRANSPORTATION ILLINOIS ROUTE 176 OVER THE SOUTH BRANCH OF THE KISHWAUKEE RIVER ALIGNMENT, TIES, & BENCH MARKS
NAME	DATE	

SCALE: VERT. _____
HORIZ. _____
DATE: 6-04-07

DRAWN BY: WS
CHECKED BY: RJS

GRAEF, ANHALT, SCHLOEMER & ASSOCIATES, INC.
CHICAGO, ILLINOIS