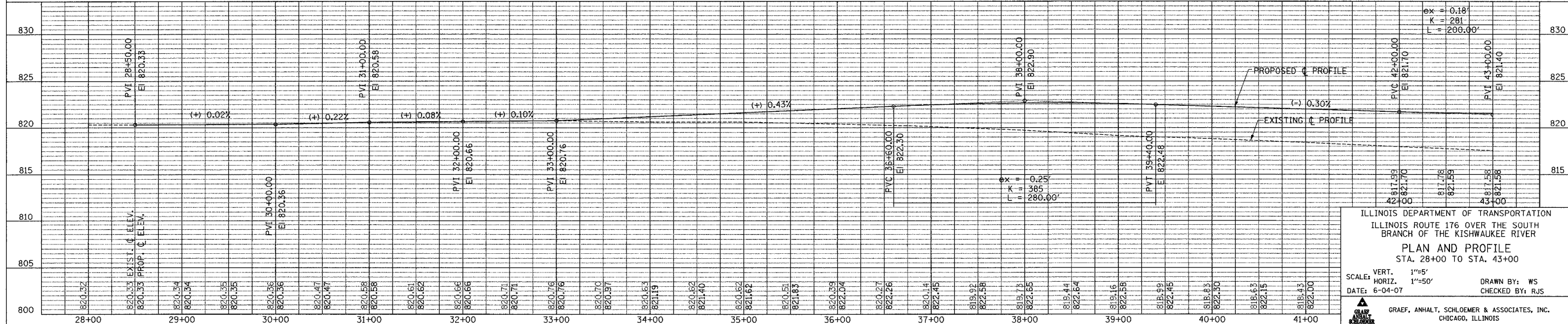
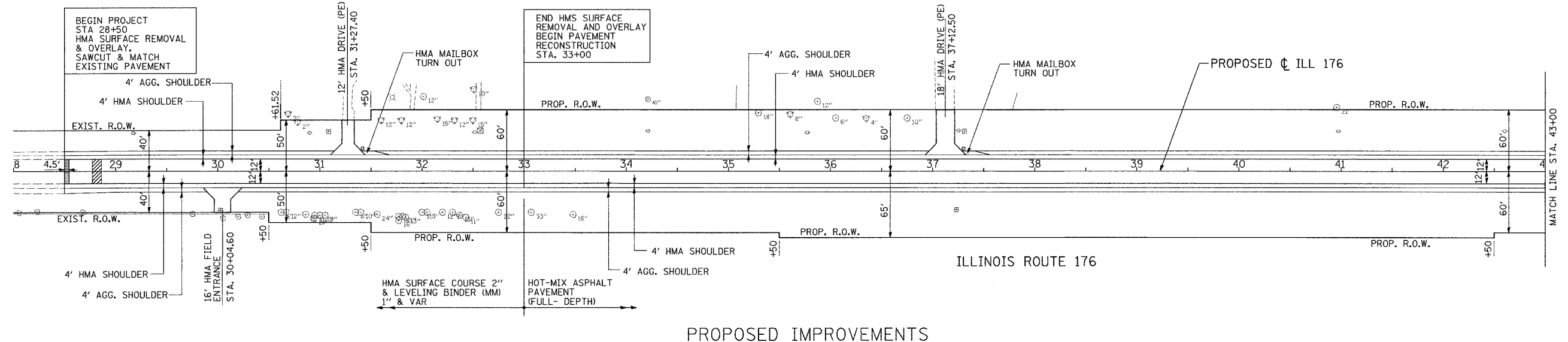
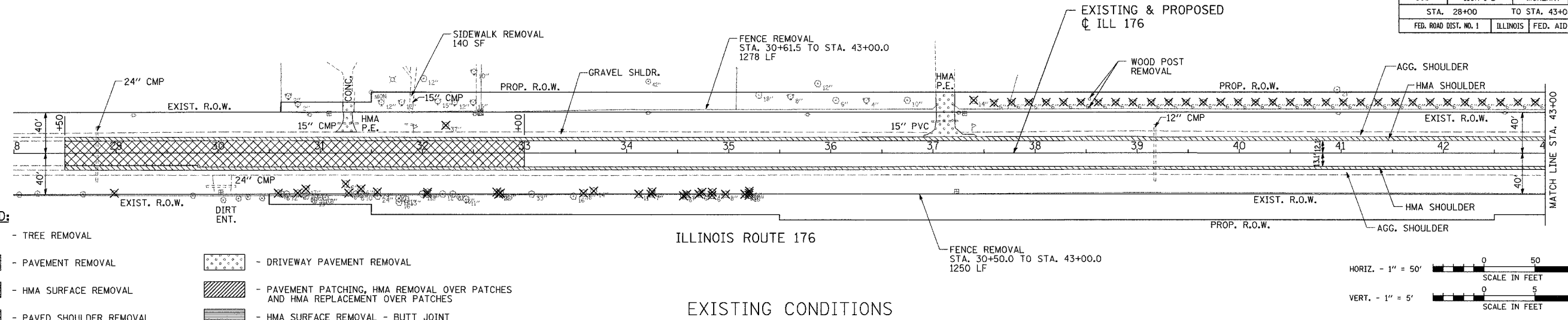


CONTRACT NO. 62340

F.A. ROUTE NO.	SECTION	COUNTY	TOTAL SHEETS	SHEET NO.
533	119R-1-B	McHENRY	77	10
STA. 28+00		TO STA. 43+00		
FED. ROAD DIST. NO. 1		ILLINOIS		FED. AID PROJECT



ILLINOIS DEPARTMENT OF TRANSPORTATION
 ILLINOIS ROUTE 176 OVER THE SOUTH
 BRANCH OF THE KISHWAUKEE RIVER
PLAN AND PROFILE
 STA. 28+00 TO STA. 43+00

SCALE: VERT. 1"=5'
 HORIZ. 1"=50'

DATE: 6-04-07 DRAWN BY: WS
 CHECKED BY: RJS

GRAEF, ANHALT, SCHLOEMER & ASSOCIATES, INC.
 CHICAGO, ILLINOIS