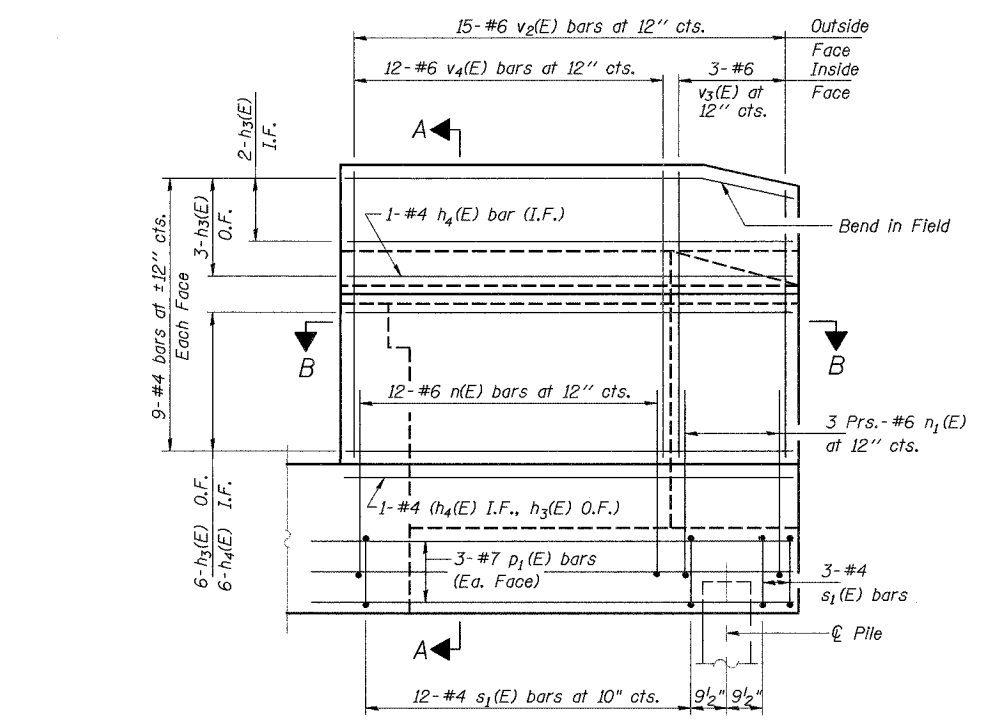
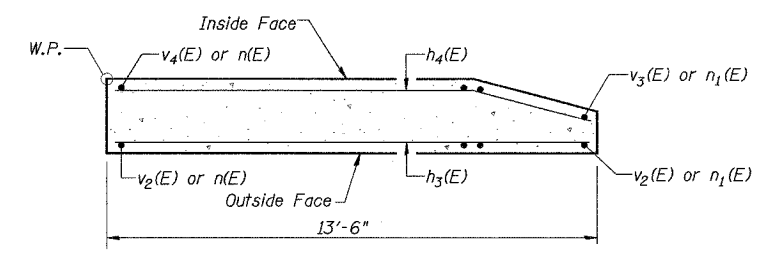


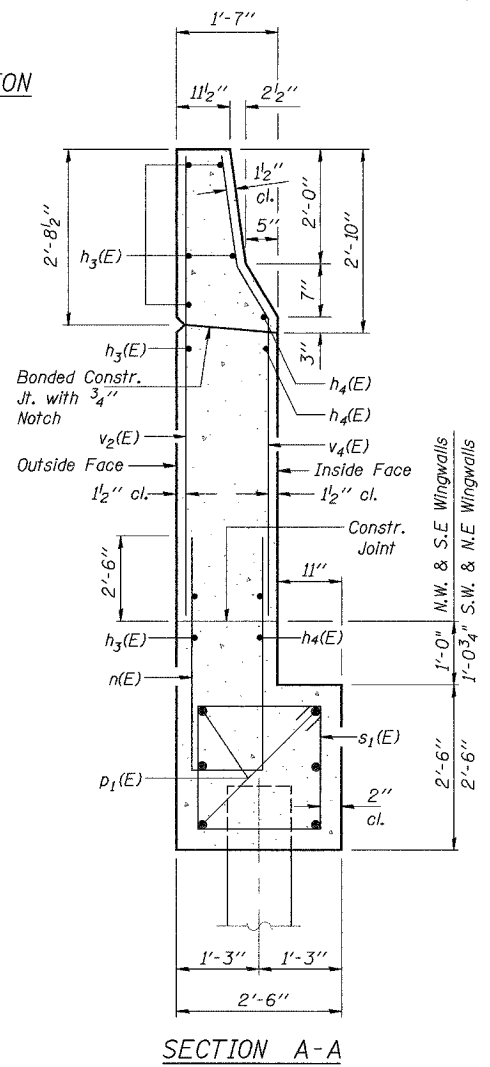
WING WALL ELEVATION
Showing Dimensions



WING WALL ELEVATION
Showing Reinforcement



SECTION B-B



SECTION A-A

- Notes:
1. Reinforcement bars designated (E) shall be epoxy coated.
 2. Quantity of concrete in end post included with Concrete Superstructure on sheet 7 of 27.

EAST ABUTMENT
BILL OF MATERIAL

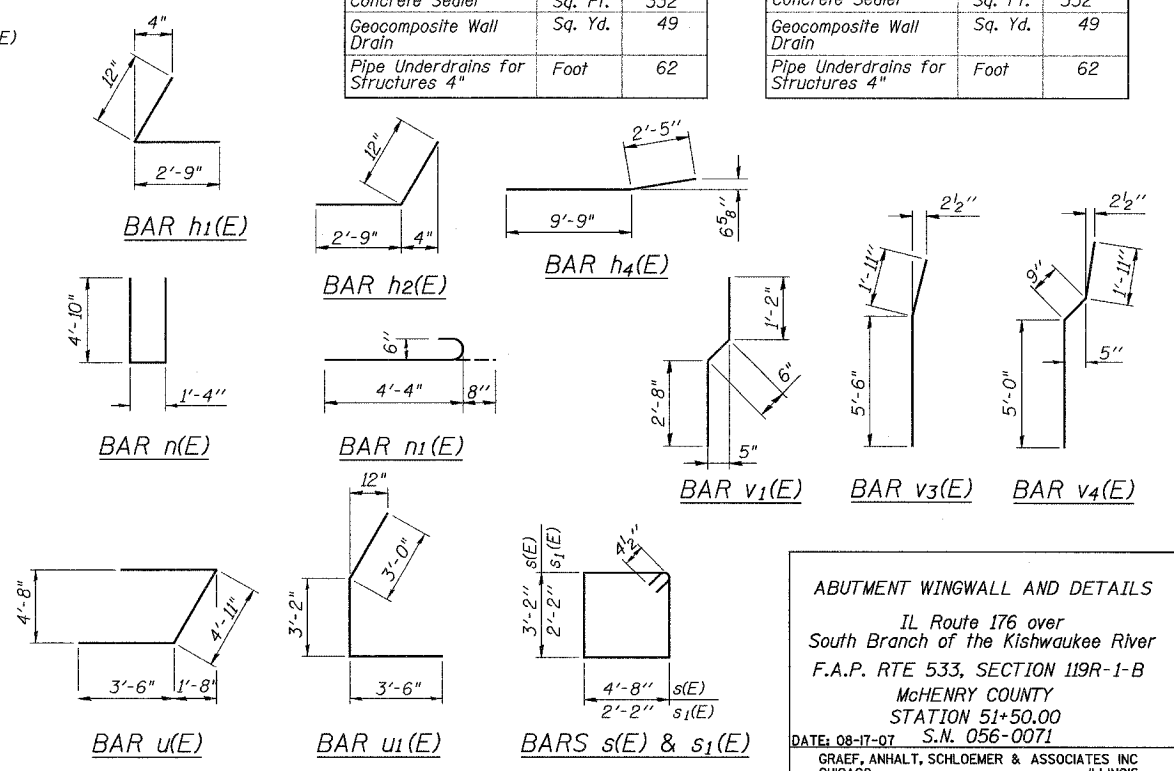
Bar	No.	Size	Length	Shape
h(E)	13	#6	42'-3"	
h1(E)	12	#5	3'-9"	L
h2(E)	12	#5	3'-9"	L
h3(E)	24	#4	12'-2"	
h4(E)	16	#4	12'-2"	
n(E)	24	#6	11'-0"	
n1(E)	12	#6	5'-0"	
p(E)	8	#7	44'-3"	
p1(E)	12	#7	13'-2"	
s(E)	40	#4	16'-5"	
s1(E)	30	#4	11'-5"	
u(E)	4	#6	11'-11"	
u1(E)	4	#6	9'-8"	
v(E)	88	#5	5'-3"	
v1(E)	44	#4	3'-0"	
v2(E)	30	#6	7'-6"	
v3(E)	6	#6	7'-5"	
v4(E)	24	#6	7'-8"	
v5(E)	44	#5	2'-6"	

Porous Granular Embankment	Cu. Yd.	83
Structure Excavation	Cu. Yd.	106
Concrete Structures	Cu. Yd.	55.0
Reinforcement Bars, Epoxy Coated	Pound	4,940
Bar Splicers	Each	44
Furnishing Metal Shell Piles 14" x 0.250"	Foot	770
Driving Piles	Foot	770
Test Pile Metal Shells	Each	1
Concrete Sealer	Sq. Ft.	332
Geocomposite Wall Drain	Sq. Yd.	49
Pipe Underdrains for Structures 4"	Foot	62

WEST ABUTMENT
BILL OF MATERIAL

Bar	No.	Size	Length	Shape
h(E)	13	#6	42'-3"	
h1(E)	12	#5	3'-9"	L
h2(E)	12	#5	3'-9"	L
h3(E)	24	#4	12'-2"	
h4(E)	16	#4	12'-2"	
n(E)	24	#6	11'-0"	
n1(E)	12	#6	5'-0"	
p(E)	8	#7	44'-3"	
p1(E)	12	#7	13'-2"	
D2(E)	1	#10	44'-3"	
s(E)	40	#4	16'-5"	
s1(E)	30	#4	11'-5"	
u(E)	4	#6	11'-11"	
u1(E)	4	#6	9'-8"	
v(E)	88	#5	5'-3"	
v1(E)	44	#4	3'-0"	
v2(E)	30	#6	7'-6"	
v3(E)	6	#6	7'-5"	
v4(E)	24	#6	7'-8"	
v5(E)	44	#5	2'-6"	

Porous Granular Embankment	Cu. Yd.	83
Structure Excavation	Cu. Yd.	133
Concrete Structures	Cu. Yd.	55.0
Reinforcement Bars, Epoxy Coated	Pound	5,130
Bar Splicers	Each	44
Furnishing Metal Shell Piles 14" x 0.250"	Foot	1,106
Driving Piles	Foot	1,106
Test Pile Metal Shells	Each	1
Concrete Sealer	Sq. Ft.	332
Geocomposite Wall Drain	Sq. Yd.	49
Pipe Underdrains for Structures 4"	Foot	62



ABUTMENT WINGWALL AND DETAILS
IL Route 176 over
South Branch of the Kishwaukee River
F.A.P. RTE 533, SECTION 119R-1-B
McHENRY COUNTY
STATION 51+50.00
DATE: 08-17-07 S.N. 056-0071
GRAEF, ANHALT, SCHLOEMER & ASSOCIATES INC
CHICAGO ILLINOIS

DESIGNED	S.S.T.
CHECKED	S.D.H.
DRAWN	E.B.
CHECKED	S.S.T.