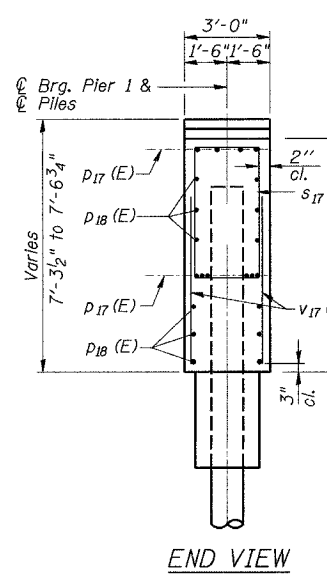
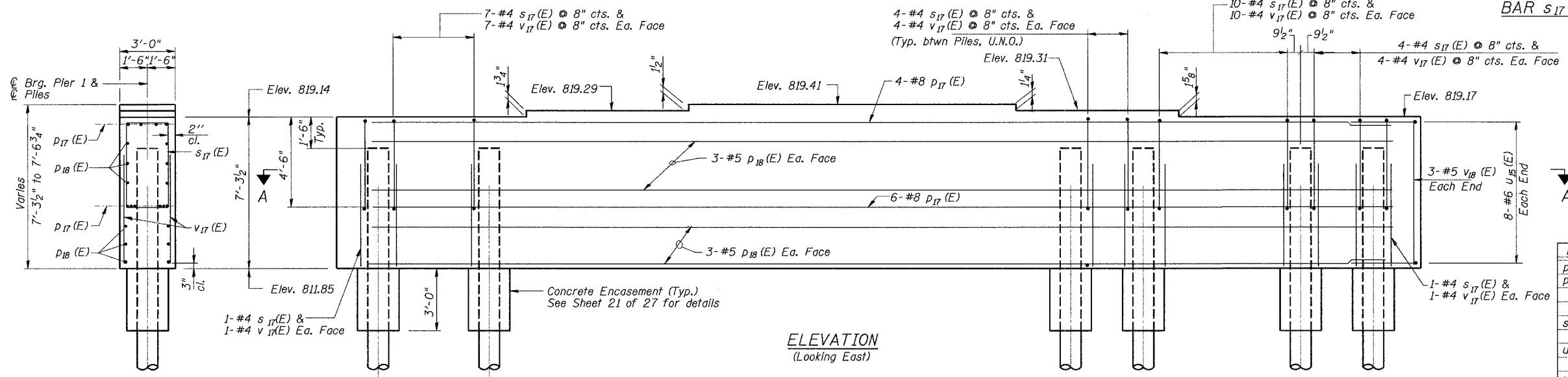
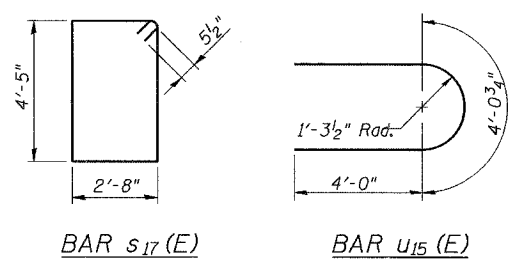
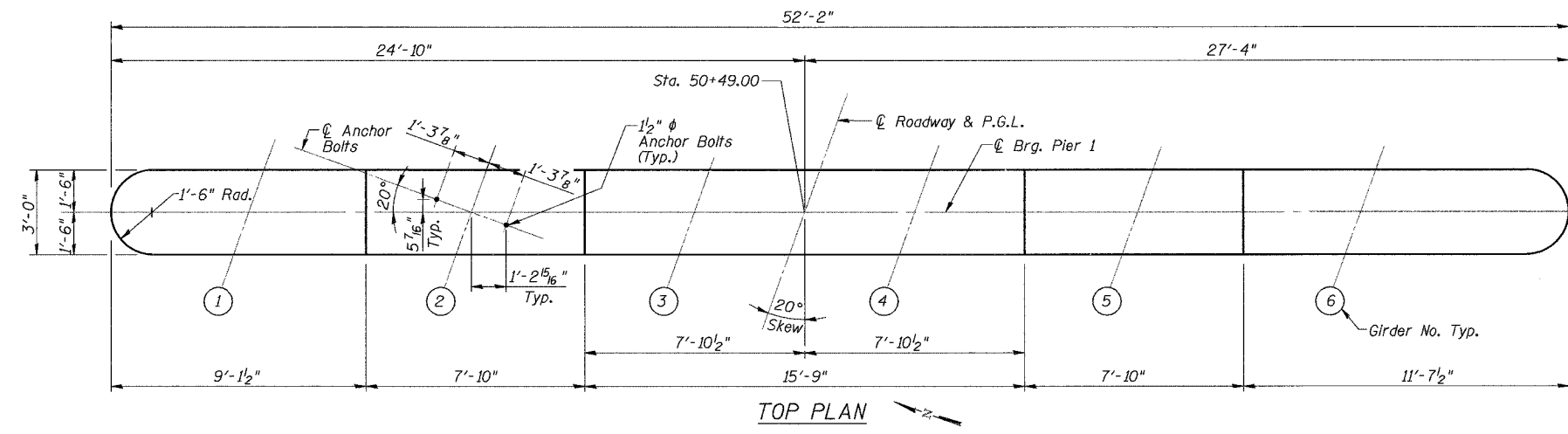


ROUTE NO.	SECTION	COUNTY	SHEET NO.	SHEET NO. OF 27 SHEETS
533	119R-1-B	McHenry	77	37
FED. ROAD DIST. XXXX		ILLINOIS		FED. AID PROJECT-

Contract #62340



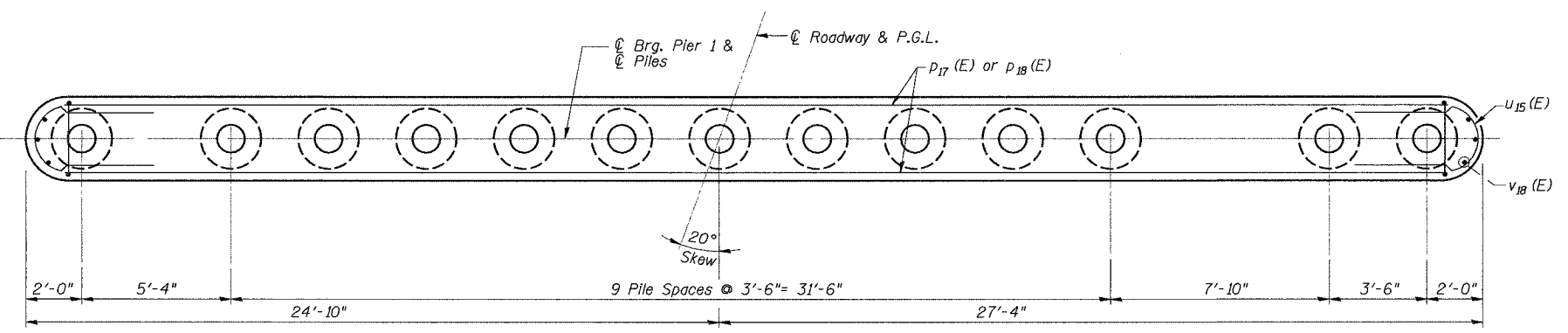
BILL OF MATERIAL

Bar	No.	Size	Length	Shape
p17 (E)	10	#8	49'-0"	—
p18 (E)	12	#5	49'-0"	—
s17 (E)	59	#4	15'-1"	□
u15 (E)	16	#6	12'-1"	U
v17 (E)	118	#4	4'-3"	—
v18 (E)	6	#5	6'-10"	—
Structure Excavation		Cu. Yd.	122	
Concrete Structures		Cu. Yd.	42.3	
Concrete Encasement		Cu. Yd.	4.2	
Reinforcement Bars, Epoxy Coated		Pound	3,180	
Furnishing Metal Shell Piles 14" x 0.250"		Foot	516	
Driving Piles		Foot	516	
Test Pile Metal Shells		Each	1	
Underwater Structure Excavation Protection Location 1		Each	1	

Reinforcement Bars designated (E) shall be epoxy coated.

PILE DATA
 Pile Type and Size: Metal Shell 14" dia. x 1/4" Walls
 Nominal Required Bearing: 390 kips
 Allowable Resistance Available: 130 kips
 Estimated Pile Length: 43 ft.

Number of Production Piles: 12
 Number of Test Piles: 1



SECTION A-A

PIER 1

- Notes:
1. Space reinforcement in cap to miss anchor bolts.
 2. Pour steps monolithically with cap.
 3. Work this Sheet With Sheet 12 of 27

PIER 1
 IL Route 176 over
 South Branch of the Kishwaukee River
 F.A.P. RTE 533, SECTION 119R-1-B
 McHENRY COUNTY
 STATION 51+50.00
 S.N. 056-0071
 DATE: 08-17-07
 GRAEF, ANHALT, SCHLOEMER & ASSOCIATES INC
 CHICAGO ILLINOIS

DESIGNED	S.S.T.
CHECKED	S.D.H.
DRAWN	E.B.
CHECKED	S.S.T.

NA 12/26/06 8:17:06 AM
 8/17/06 11:34:08 AM
 11:34:08 AM

11:34:08 AM 8/17/2006 11:34:08 AM