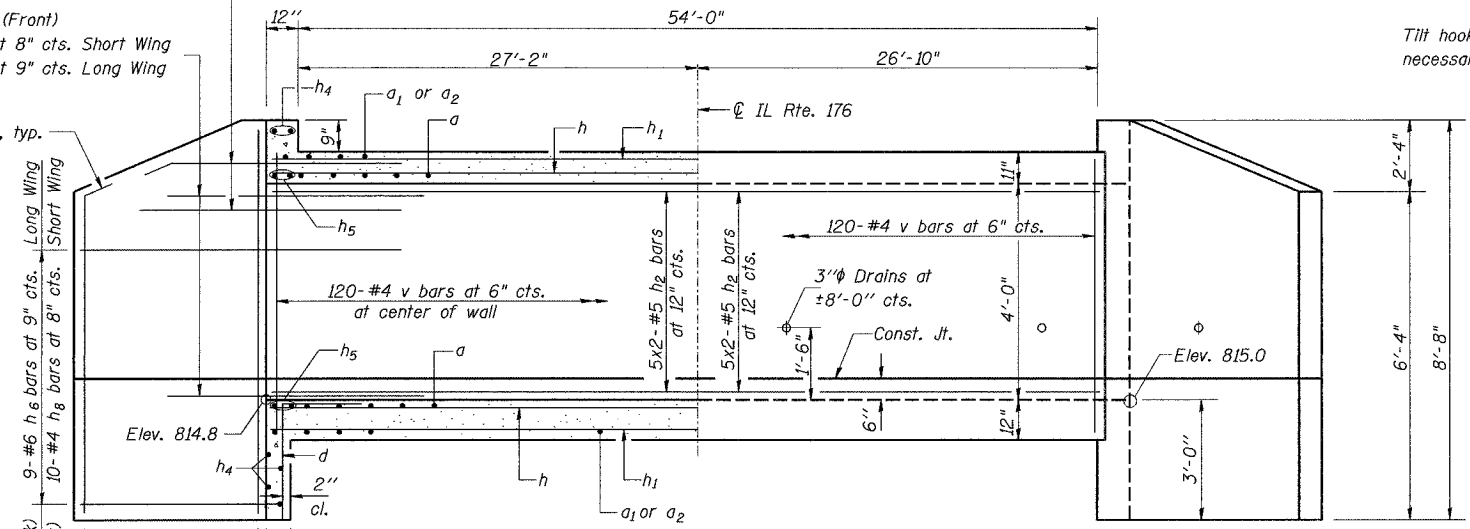


Contract #62340

(Back)  
3-#4 h<sub>3</sub> bars at 8" cts. Short Wing  
3-#6 h<sub>7</sub> bars at 9" cts. Long Wing

(Front)  
7-#4 h<sub>3</sub> bars at 8" cts. Short Wing  
6-#6 h<sub>7</sub> bars at 9" cts. Long Wing

Bend in Field, typ.

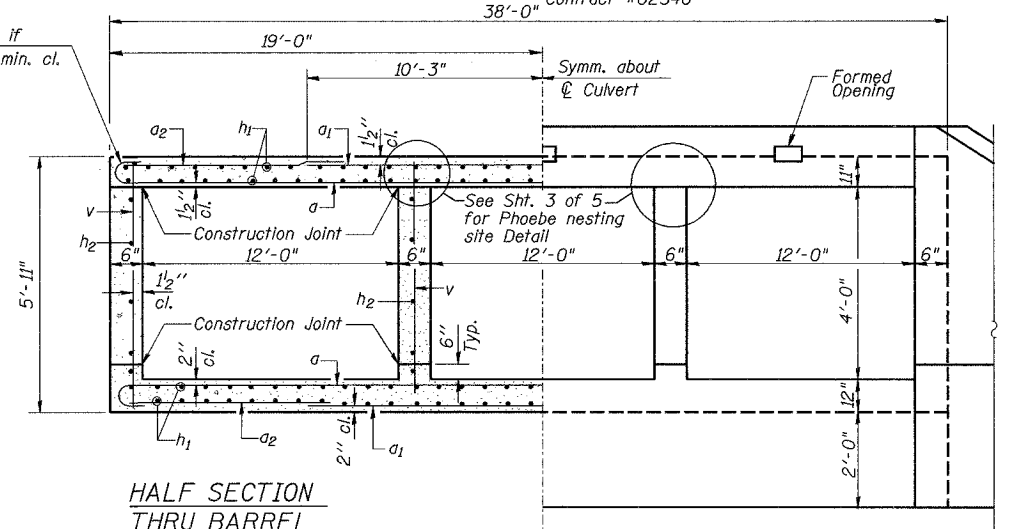


**HALF LONG SECTION**  
Showing bars in Inside Wall

**HALF ELEVATION**  
Showing bars in Outside Wall

Dimensions are at right angles to  $\perp$  Roadway

Tilt hook of a bars if necessary for 1/2" min. cl.

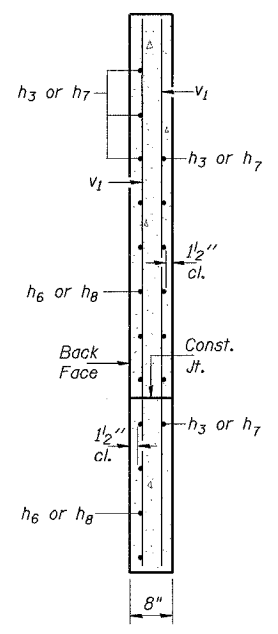


**HALF SECTION THRU BARREL**

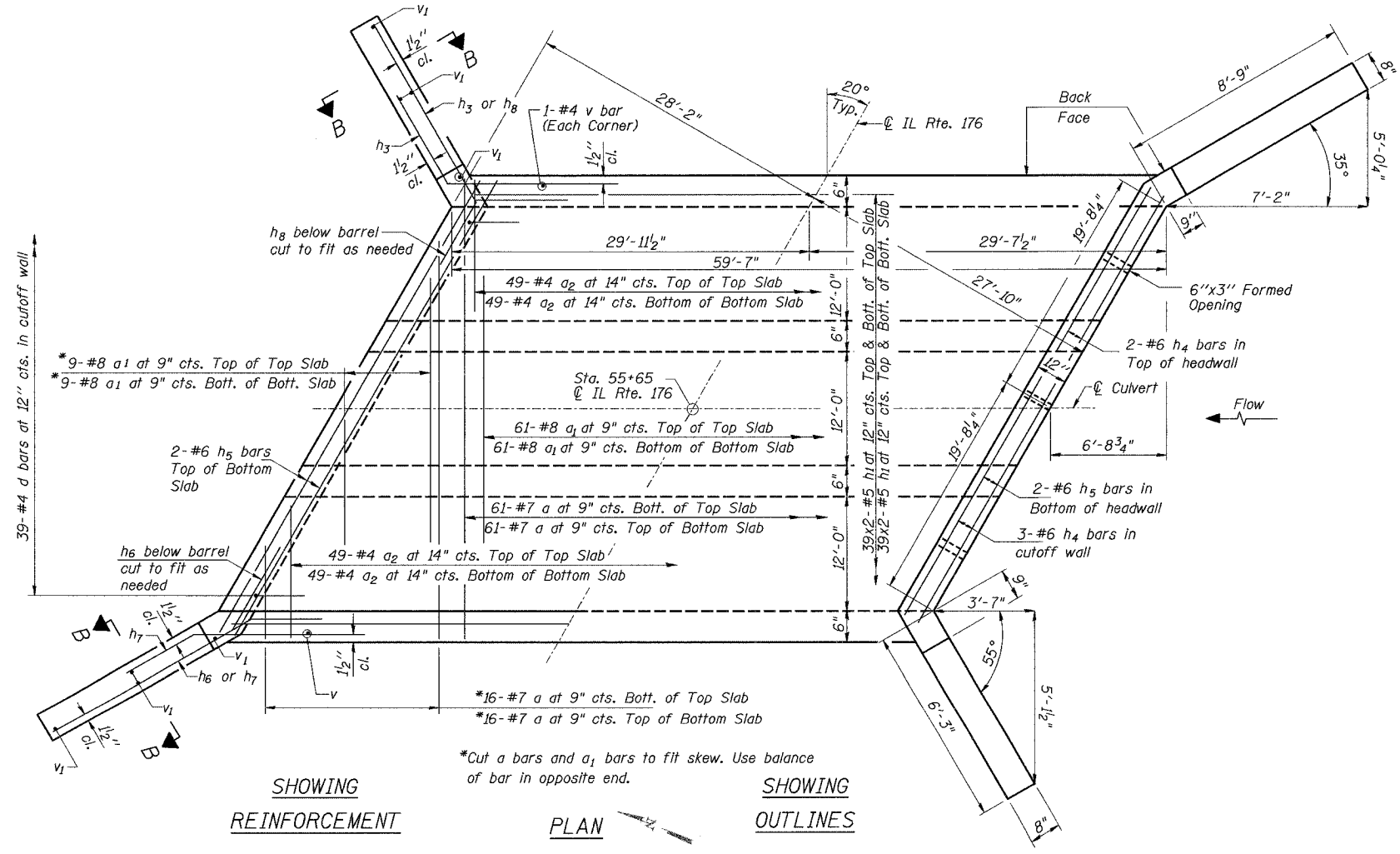
**HALF END ELEVATION**

**Notes:**

A distance of half the length of the wingwall but not less than six feet of the barrel shall be poured monolithically with the wingwalls.  
Bars indicated thus 39x2-#4 etc. indicates 39 lines of bars with 2 lengths per line.



**SECTION B-B**



**SHOWING REINFORCEMENT**

**SHOWING OUTLINES**

**MINIMUM BAR LAP**

Location	Barrels	Wingwalls
Size	Lap	Lap
#4	1'-4"	1'-8"
#5	1'-8"	2'-2"
#6	2'-0"	2'-7"

**CULVERT DETAILS**  
IL Route 176 over South Branch of the Kishwaukee River (Overflow Site)  
F.A.P. RTE 533, SECTION 119R-1-B  
McHENRY COUNTY  
STATION 55+65.00  
DATE: 08-17-07 S.N. 056-0073  
GRAEF, ANHALT, SCHLOEMER & ASSOCIATES INC  
CHICAGO ILLINOIS

DESIGNED	S.S.T.
CHECKED	S.D.H.
DRAWN	E.B.
CHECKED	S.S.T.

N:\Jobs\2006\p101\00\176Cur-Sect.dgn  
 11:56:50 AM