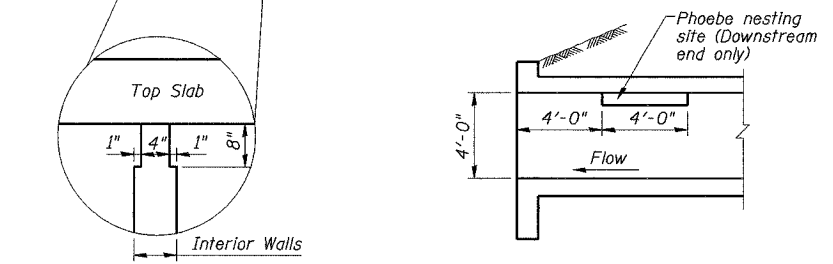
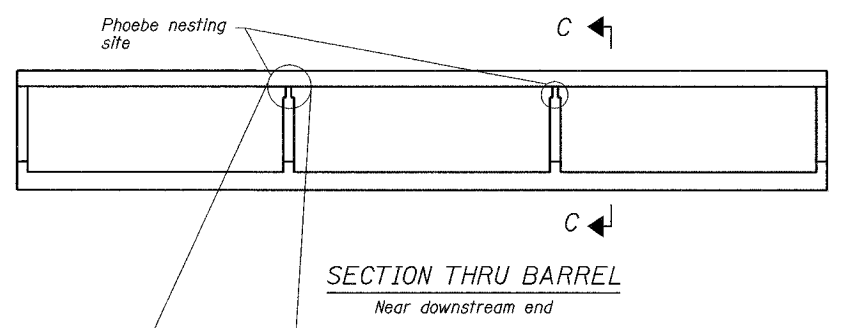


BILL OF MATERIAL

Bar	No.	Size	Length	Shape
a	154	#7	39'-6"	U
a_1	140	#8	20'-6"	—
a_2	196	#4	9'-6"	—
d	78	#4	4'-6"	┘
h_1	312	#5	30'-9"	—
h_2	40	#5	30'-9"	—
h_3	20	#4	8'-0"	┘
h_4	10	#6	39'-8"	—
h_5	8	#6	40'-1"	—
h_6	18	#6	12'-4"	┘
h_7	18	#6	8'-0"	┘
h_8	20	#4	9'-4"	┘
v	484	#4	5'-7"	—
v_1	16	#4	8'-4"	—
Concrete Box Culverts			Cu. Yd.	190.3
Reinforcement Bars			Pound	36,620



Note:
Notch formed by rough-finished board attached to and removed with formwork.

DESIGNED	S.S.T.
CHECKED	S.D.H.
DRAWN	E.B.
CHECKED	S.S.T.

REINFORCEMENT DETAILS
IL Route 176 over South Branch of the Kishwaukee River (Overflow Site)
F.A.P. RTE 533, SECTION 119R-1-B
MCHENRY COUNTY
STATION 55+65.00
DATE: 08-17-07 S.N. 056-0073
GRAEF, ANHALT, SCHLOEMER & ASSOCIATES INC
CHICAGO ILLINOIS