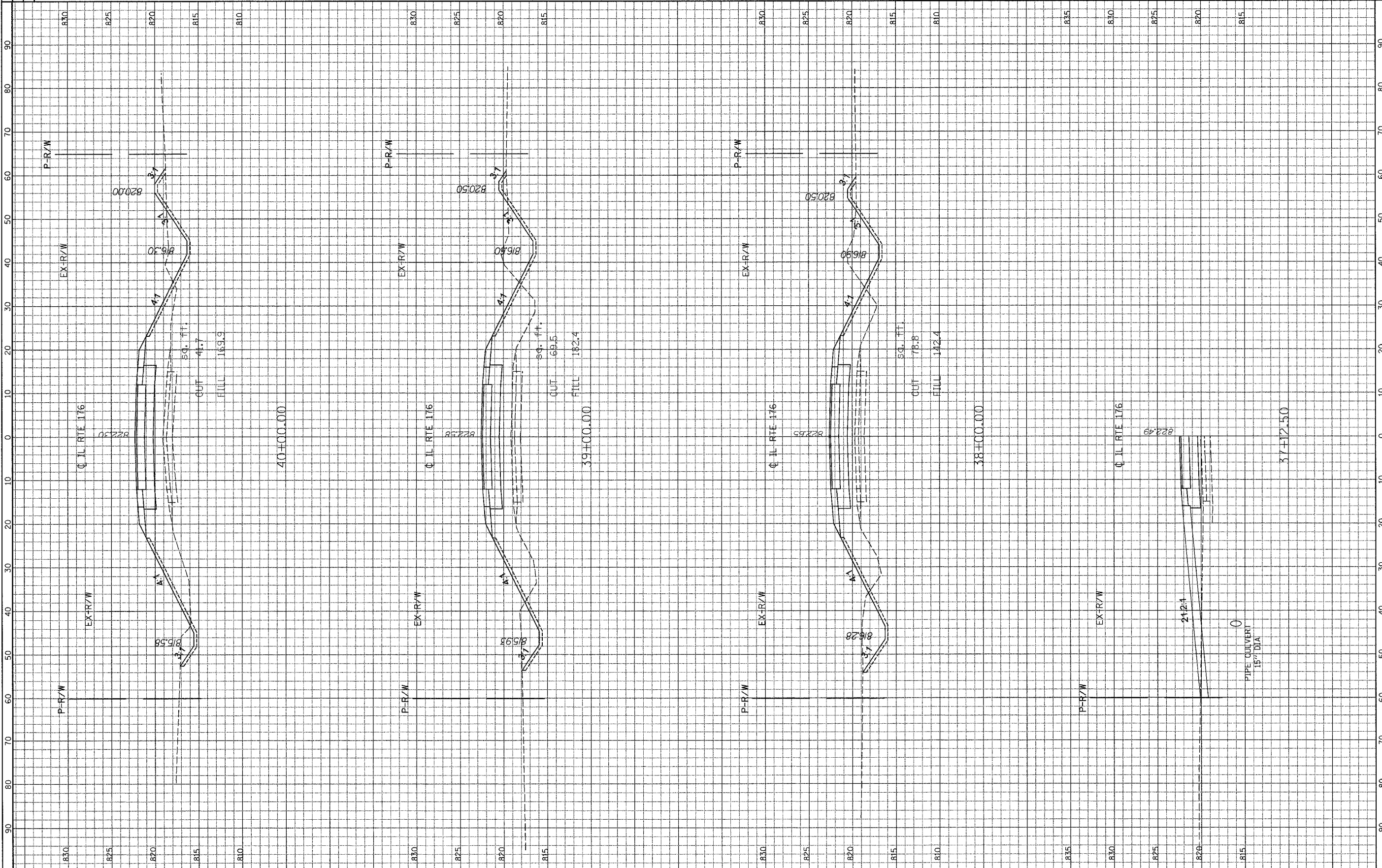


CONTRACT NO. 62340		F.A.P. RTE. 533	SECTION 119R-1-B	COUNTY MCHENRY	TOTAL SHEETS NO. 77	SHEET NO. 68
STA. TO STA.		ILLINOIS FED. AID PROJECT				
FED. ROAD DIST. NO.		ILLINOIS FED. AID PROJECT				

END AREAS
EXCAV. SQ. FT.
EMB. SQ. FT.



SCALE: HORIZ. 1" = 10'  
VERT. 1" = 5'

F. A. P. ROUTE 533 (IL ROUTE 176)  
CROSS SECTIONS

ILLINOIS DEPARTMENT OF TRANSPORTATION

GRAF, ANHALT, SCHUMER & ASSOCIATES, INC.  
ENGINEERS & SCIENTISTS  
8501 N. Higgins Road, Suite 280  
Chicago, Illinois 60631  
(773) 398-0122