

F.A.P.	SECTION	COUNTY	TOTAL SHEETS	SHEET NO.
345	**	COOK	22	1

••(7-YV-1&8R-1) WRS&7-YV-1-BR

STATE OF ILLINOIS
DEPARTMENT OF TRANSPORTATION
DIVISION OF HIGHWAYS

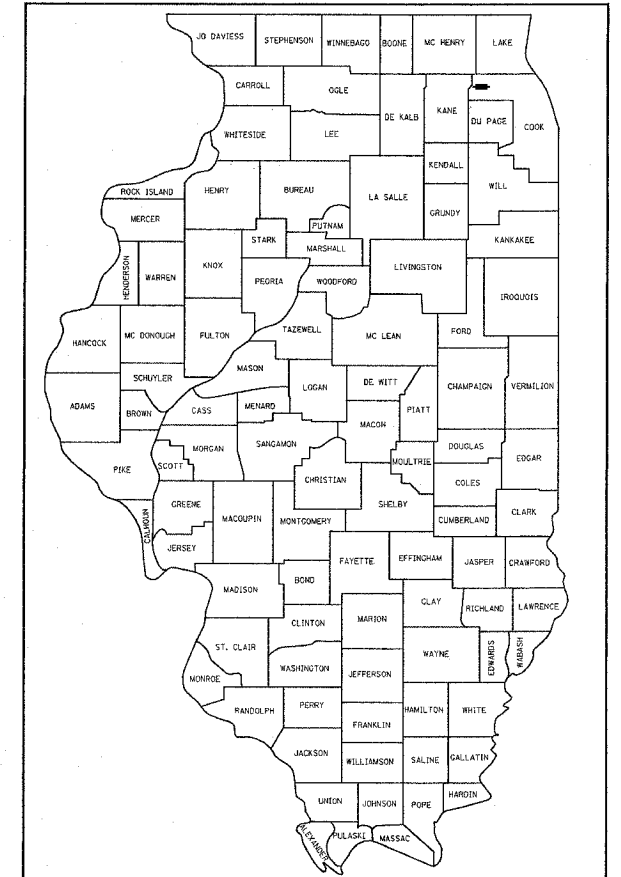
**PLANS FOR PROPOSED
HIGHWAY**

F.A.P. 345: US 20 (LAKE STREET)
OVER EJ&E RR
SECTION: (7-YV-1&8R-1) WRS&7-YV-1-BR
BRIDGE BEAM REPLACEMENT
COOK COUNTY
G-91-138-03

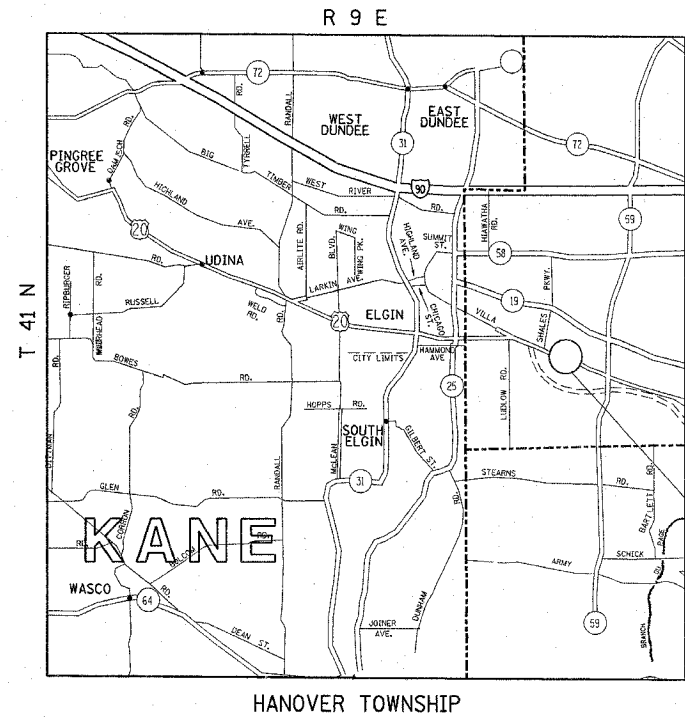
FOR INDEX OF SHEETS, SEE SHEET NO. 2

THE IMPROVEMENT IS LOCATED
IN THE CITY OF ELGIN

D-91-138-03



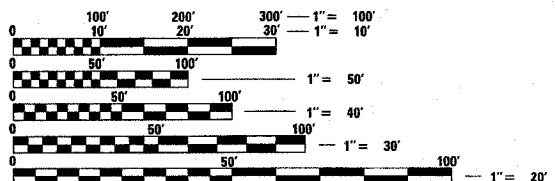
LOCATION OF SECTION INDICATED THUS: - ■ -



TRAFFIC DATA

US 20: 2005 ADT = 37700
POSTED SPEED LIMIT= 50 MPH

U.S. ROUTE 20
IMPROVEMENT LOCATION
SN: 016-0219



FULL SIZE PLANS HAVE BEEN PREPARED USING STANDARD
ENGINEERING SCALES. REDUCED SIZED PLANS WILL NOT
CONFORM TO STANDARD SCALES. IN MAKING MEASUREMENTS
ON REDUCED PLANS, THE ABOVE SCALES MAY BE USED.

J.U.L.I.E.
JOINT UTILITY LOCATION INFORMATION FOR EXCAVATION
1-800-892-0123

STATE OF ILLINOIS
DEPARTMENT OF TRANSPORTATION
DIVISION OF HIGHWAYS

SUBMITTED Aug. 16 20 07

Diane O'Keefe
DEPUTY DIRECTOR OF HIGHWAYS, REGION ENGINEER

October 12 20 07
Eric E. Starbuck
ENGINEER OF DESIGN AND ENVIRONMENT

October 12 20 07
Milton L. See, P.E.
DIRECTOR OF HIGHWAYS, CHIEF ENGINEER

**PRINTED BY THE AUTHORITY
OF THE STATE OF ILLINOIS**

DISTRICT ONE DESIGN PLAN PREPARATION ENGINEER:
KEN ENG/BOB BORO (847)705-4178