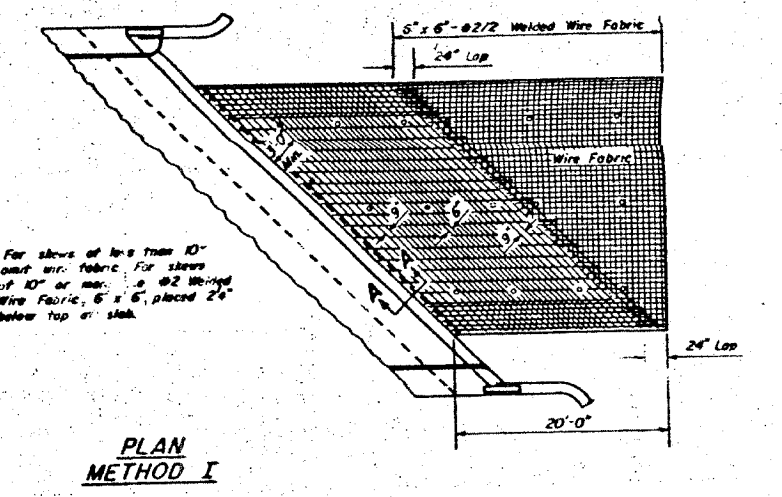
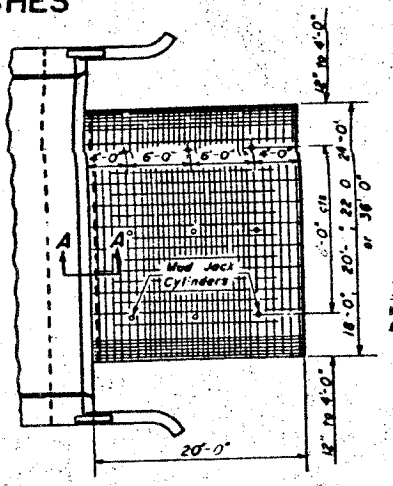
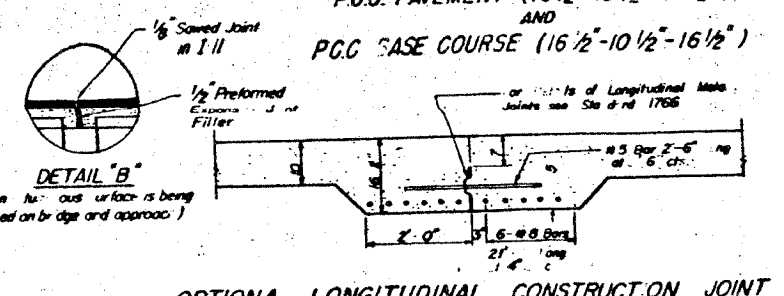
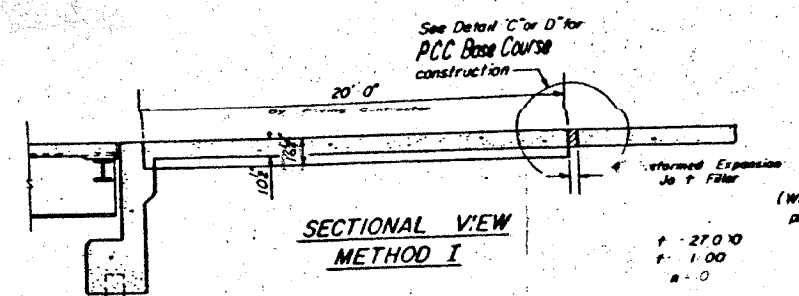


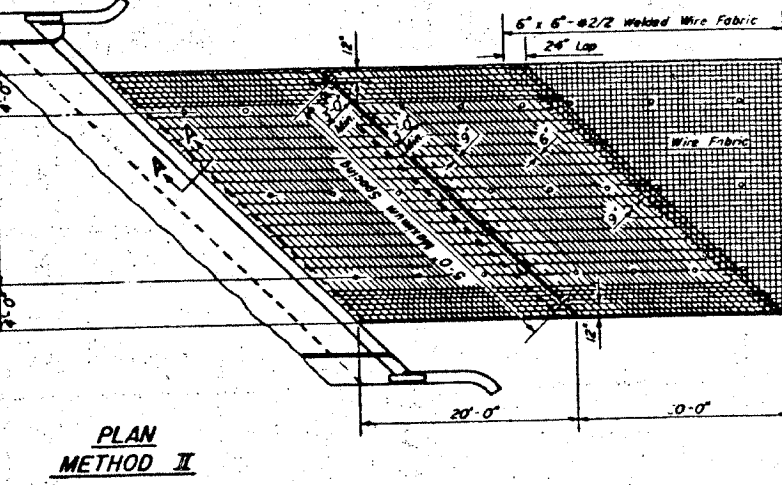
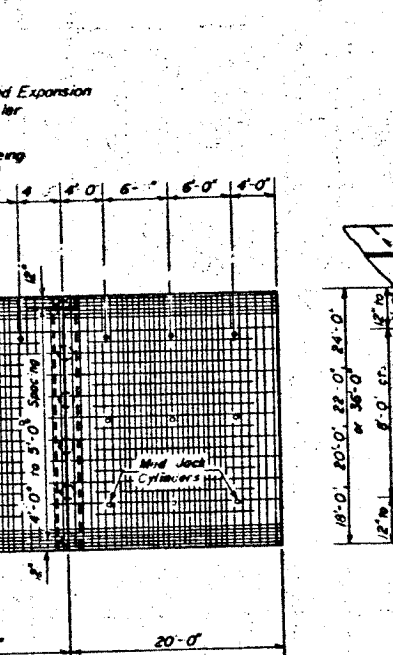
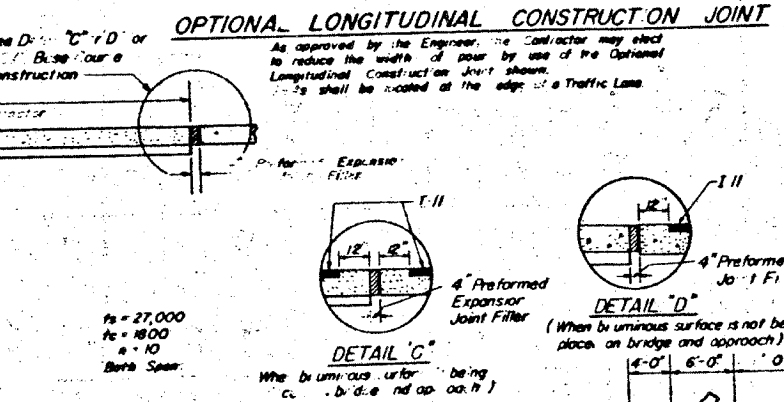
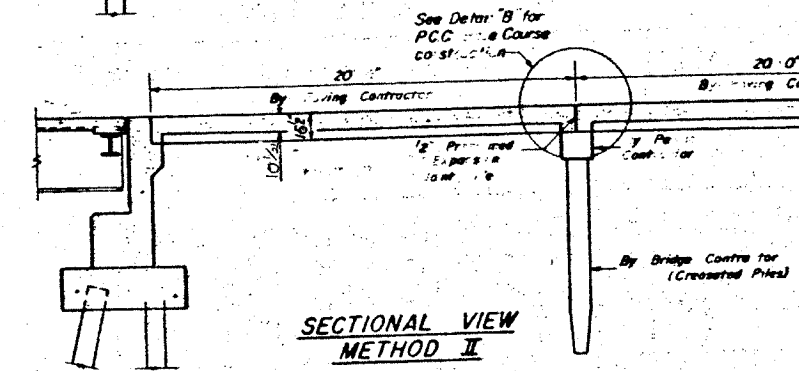
**DETAILS OF BRIDGE APPROACHES**

P.C.C. PAVEMENT (16 1/2'-10 1/2'-16 1/2')  
AND  
P.C.C. BASE COURSE (16 1/2'-10 1/2'-16 1/2')

DEC 2 1953



Expanded Metal weighing not less than 75 Lbs. per 100 sq. ft. or a welded bar net weighing not less than 75 Lbs. per 100 sq. ft. having members of equal size in both directions and spaced not over 6" apart may be used instead of the #2 Welded Wire Fabric, 5 x 6, provided the expanded metal or bar net is furnished at no additional cost to the State.

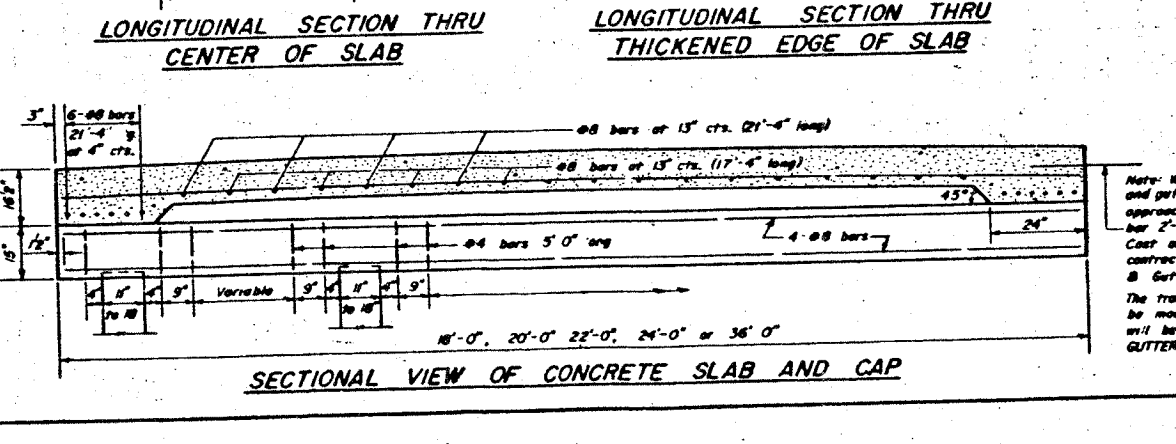
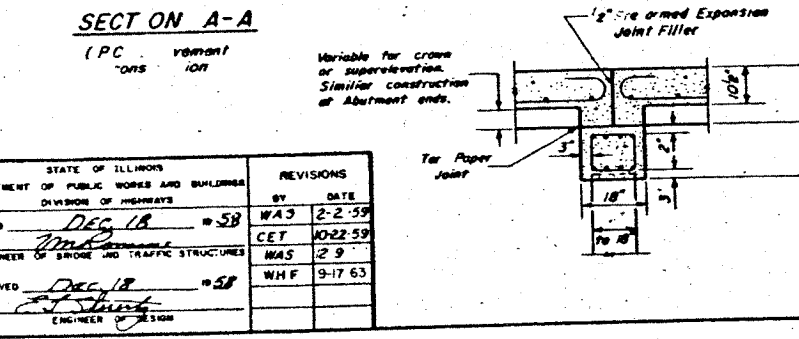
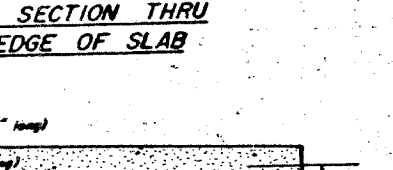
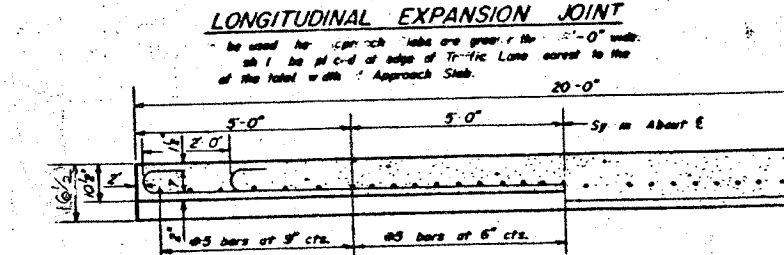
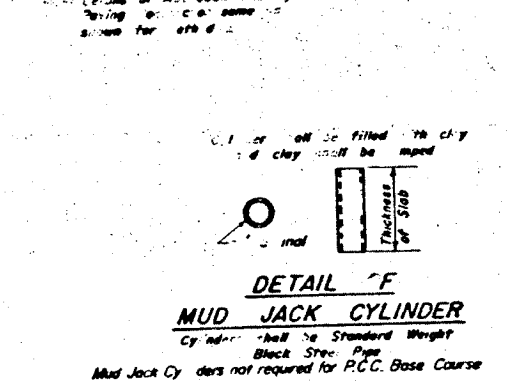
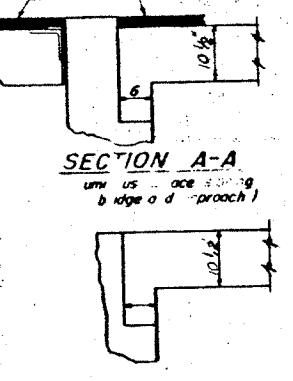
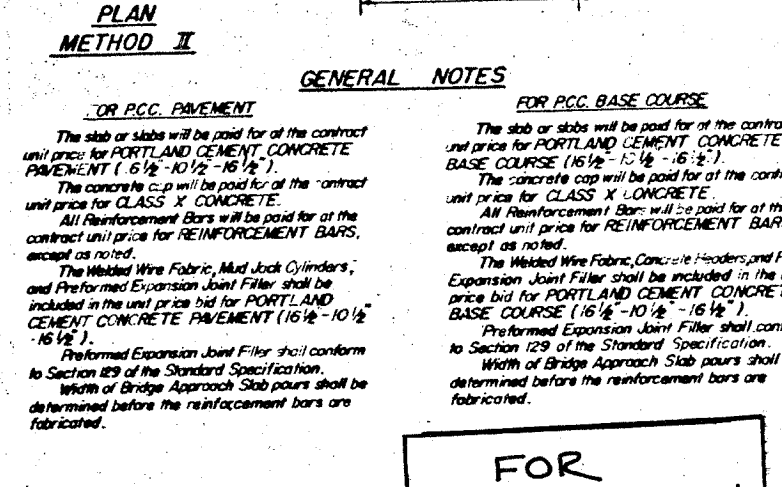
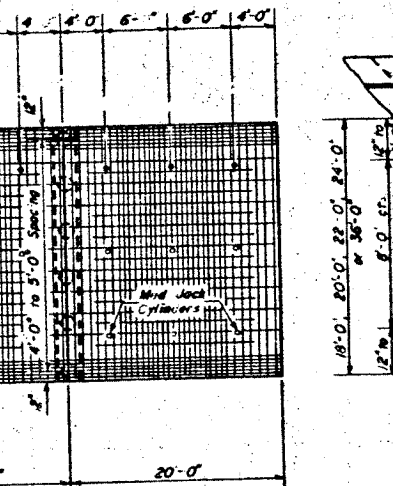
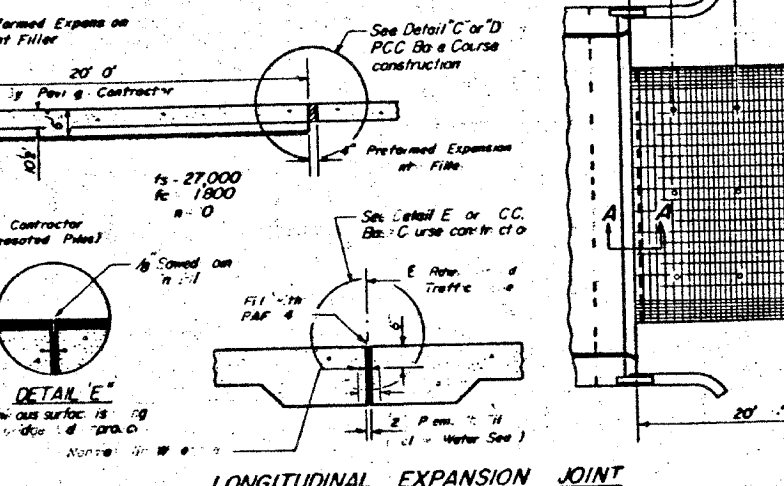
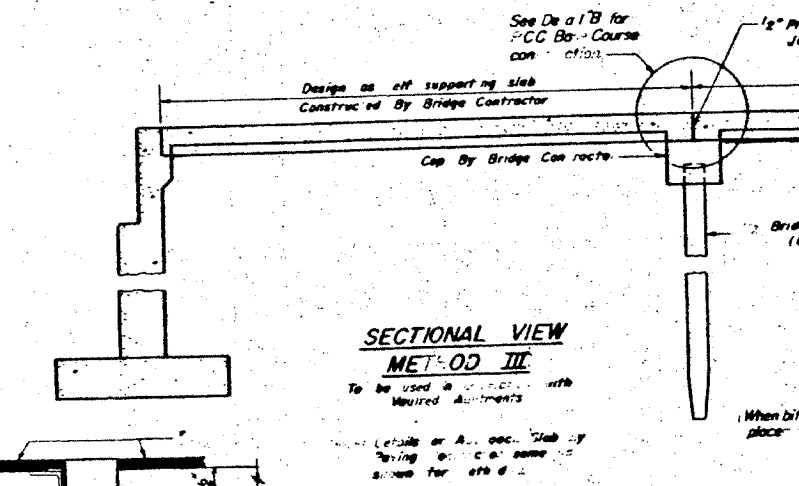


**GENERAL NOTES**

**FOR P.C.C. PAVEMENT**  
The slab or slabs will be paid for at the contract unit price for PORTLAND CEMENT CONCRETE PAVEMENT (16 1/2'-10 1/2'-16 1/2').  
The concrete cap will be paid for at the contract unit price for CLASS X CONCRETE.  
All Reinforcement Bars will be paid for at the contract unit price for REINFORCEMENT BARS, except as noted.  
The Welded Wire Fabric, Mud Jack Cylinders, and Preformed Expansion Joint Filler shall be included in the unit price bid for PORTLAND CEMENT CONCRETE PAVEMENT (16 1/2'-10 1/2'-16 1/2').  
Preformed Expansion Joint Filler shall conform to Section 129 of the Standard Specification.  
Width of Bridge Approach Slab pours shall be determined before the reinforcement bars are fabricated.

**FOR P.C.C. BASE COURSE**  
The slab or slabs will be paid for at the contract unit price for PORTLAND CEMENT CONCRETE BASE COURSE (16 1/2'-10 1/2'-16 1/2').  
The concrete cap will be paid for at the contract unit price for CLASS X CONCRETE.  
All Reinforcement Bars will be paid for at the contract unit price for REINFORCEMENT BARS, except as noted.  
The Welded Wire Fabric, Concrete Headers, and Preformed Expansion Joint Filler shall be included in the unit price bid for PORTLAND CEMENT CONCRETE BASE COURSE (16 1/2'-10 1/2'-16 1/2').  
Preformed Expansion Joint Filler shall conform to Section 129 of the Standard Specification.  
Width of Bridge Approach Slab pours shall be determined before the reinforcement bars are fabricated.

**FOR INFORMATION ONLY**



Note: When road plans show curb and gutter or gutter adjacent to approach slabs place #4 Tie Bar 2'-6" long at 2'-6" cts. Cost of tie bars included in contract unit price for Curb & Gutter or Gutter.  
The transition for curb and gutter shall be made in 100 feet and will be paid for as CONCRETE GUTTER, of the type specified.  
The transition for curb and gutter shall be made in 20 feet and will be paid for as COMBINATION CURB and GUTTER, of the type specified.

STATE OF ILLINOIS		REVISIONS	
DEPARTMENT OF PUBLIC WORKS AND BUILDINGS		BY	DATE
DIVISION OF HIGHWAYS			
DESIGNED	DEC 18 1953	WAS	2-2-59
CHECKED		CET	10-22-59
ENGINEER OF BRIDGE AND TRAFFIC STRUCTURES		WAS	2-9-
APPROVED	DEC 18 1953	WHF	9-17-63
ENGINEER			

C-611

STANDARD 1909 - 4