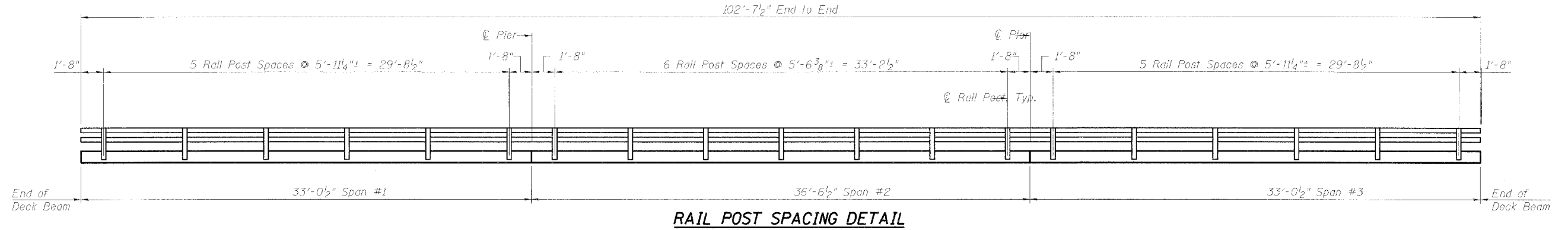
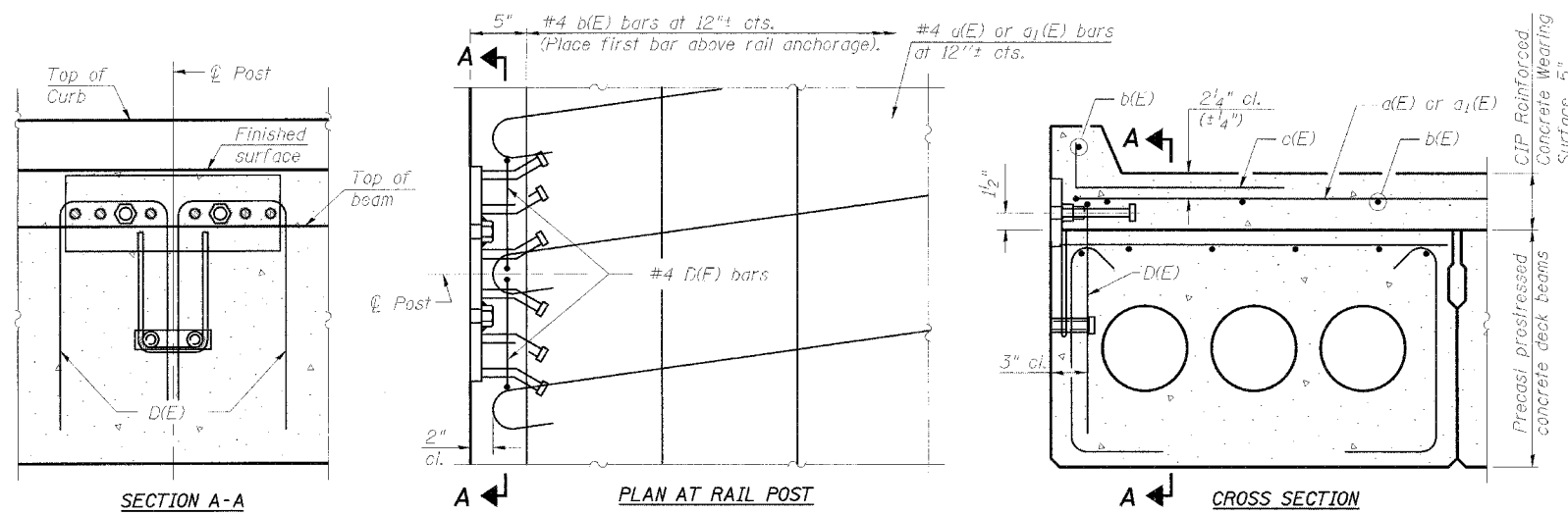


STATE OF ILLINOIS
DEPARTMENT OF TRANSPORTATION

ROUTE NO.	SECTION	COUNTY	TOTAL SHEETS	SHEET NO.	SHEET NO. 7 10 SHEETS
Rte. 20		Cook	22	14	
FED. ROAD DIST. NO. 7	ILLINOIS	FED. AID PROJECT NO.	Contract # 62618		

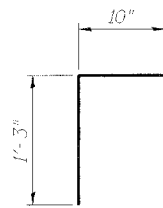


RAIL POST SPACING DETAIL



REINFORCED CONCRETE WEARING SURFACE AND RAILING CONNECTION DETAILS

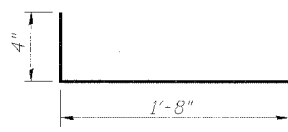
The rail anchorage shall be cast with the beam and the wearing surface shall be cast in the field. Formwork necessary for the wearing surface may be secured utilizing the bottom rail anchorage inserts and/or additional inserts cast into the beam. Drilling into the beam will not be permitted.



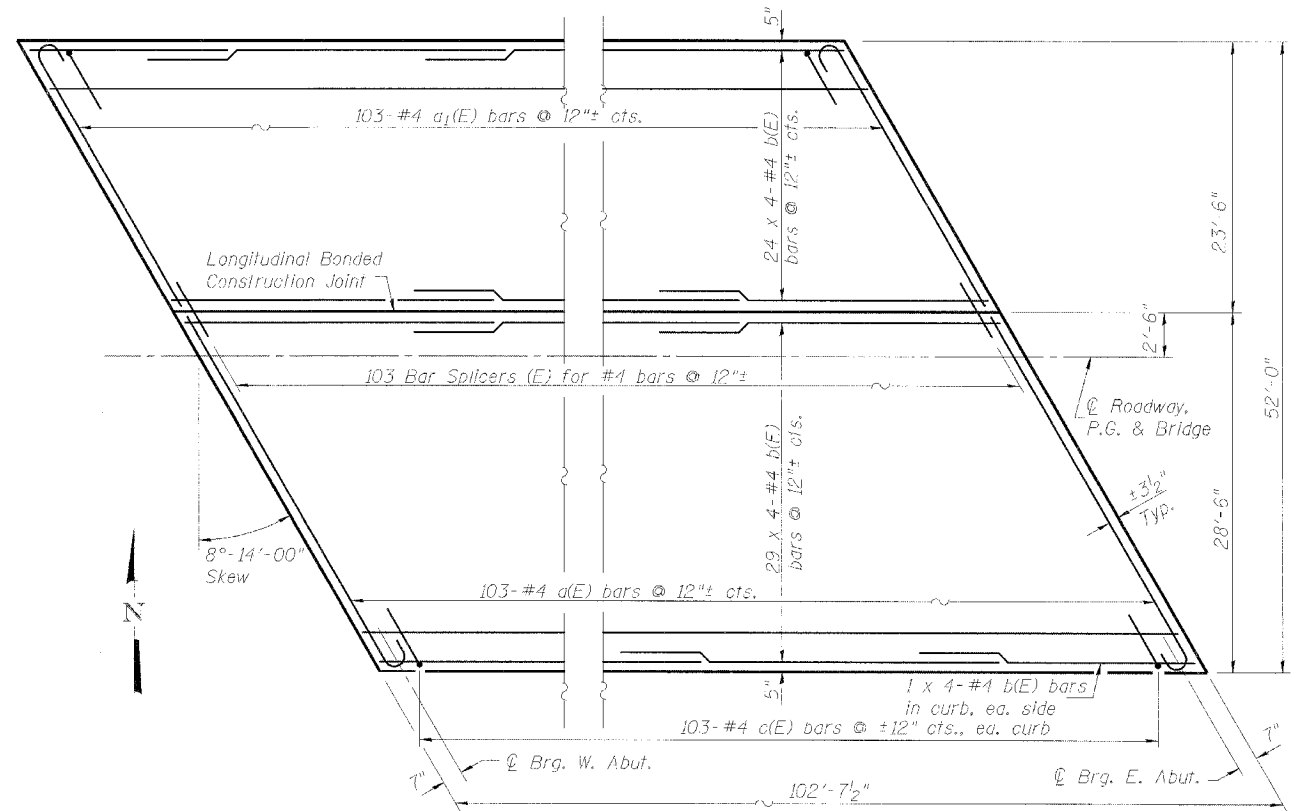
D(E) BAR
75 Req'd



a(E) & a1(E) BAR



c(E) BAR



CONCRETE WEARING SURFACE PARTIAL PLAN

BILL OF MATERIAL

Bar	No.	Size	Length	Shape
a(F)	103	#4	29'-0"	U
a1(E)	103	#4	24'-0"	U
b(E)	220	#4	26'-7"	—
c(E)	206	#4	2'-0"	—
d(E)	106	#5	1'-9"	—

BAR LAPS

#4 bars - 1'-4"

BILL OF MATERIAL

Item	Unit	Quantity
Reinforcement Bars, Epoxy Coated	Pound	7,830
Concrete Wearing Surface, 5"	Sq. Yd.	59.3

Cost of Curb shall be included in Concrete Wearing Surface, 5"

DESIGNED	DDB
CHECKED	LLV
DRAWN	MGM
CHECKED	LLV

EXAMINED	200
PASSED	ENGINEER OF BRIDGE DESIGN
	ENGINEER OF BRIDGES AND STRUCTURES

RAIL POST SPACING & CONCRETE WEARING SURFACE PLAN
U.S. RTE. 20 (F.A.P. 426)
OVER E.J. & E. RAILROAD
COOK COUNTY, STA. 106+03.50
STRUCTURE NO. 016-0219