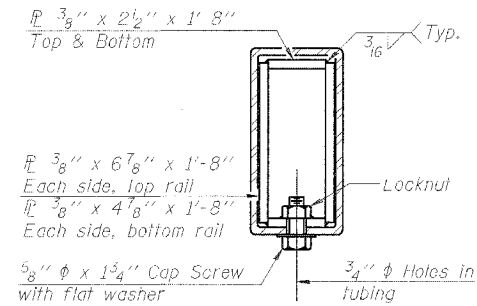
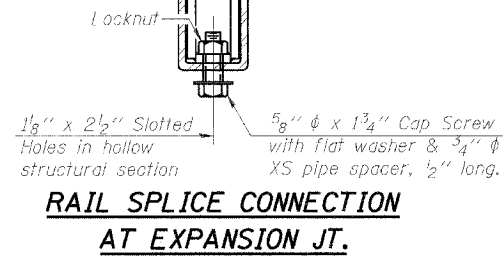
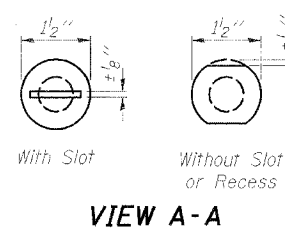
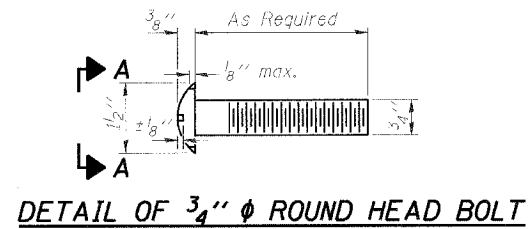


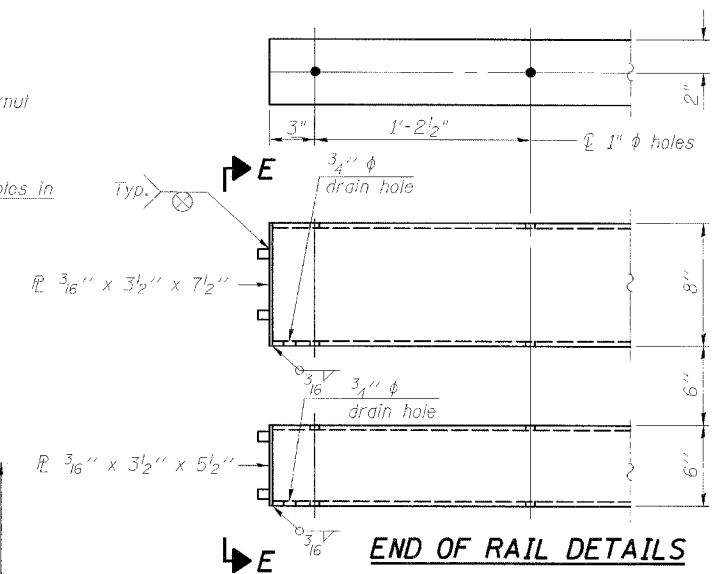
STATE OF ILLINOIS  
DEPARTMENT OF TRANSPORTATION

ROUTE NO.	SECTION	COUNTY	TOTAL SHEETS	SHEET NO.
Rte. 20		Cook	22	15
FED. ROAD DIST. NO. 7	ILLINOIS	FED. AID PROJECT		

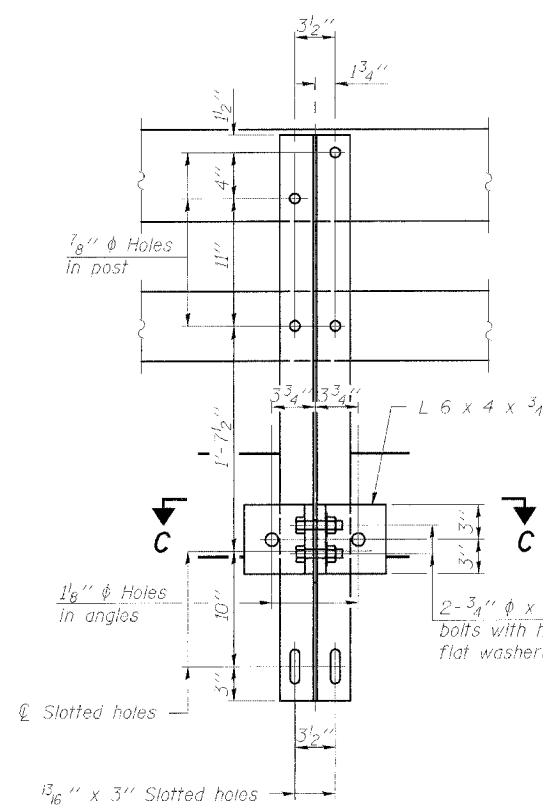
Contract # 62618



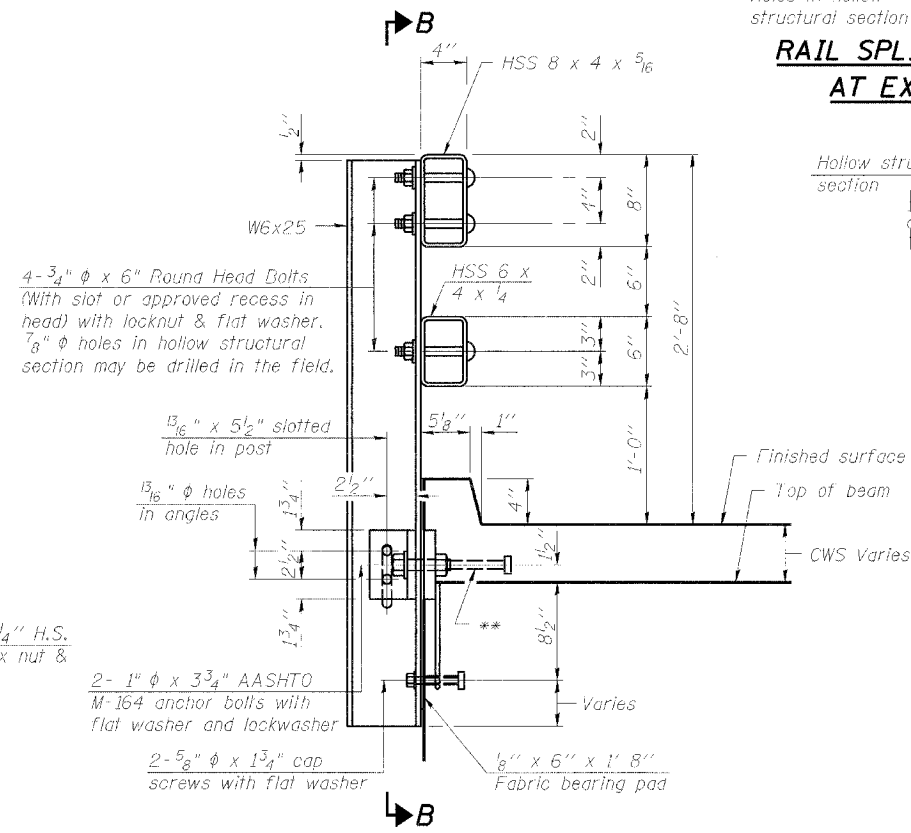
SECTION AT RAIL SPLICE



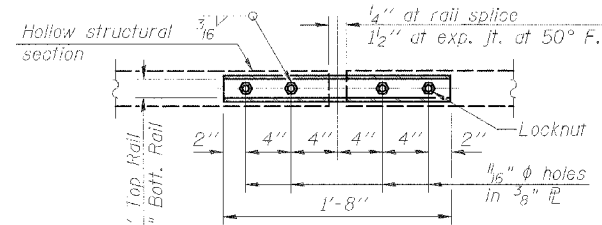
END OF RAIL DETAILS



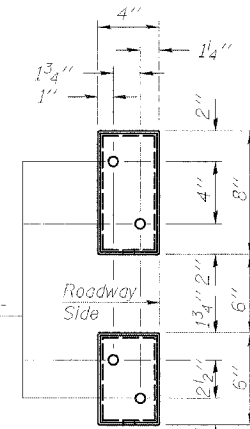
SECTION B-B



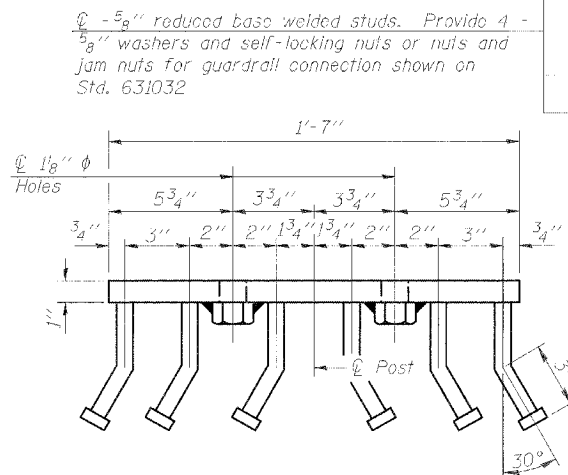
SECTION AT RAIL POST



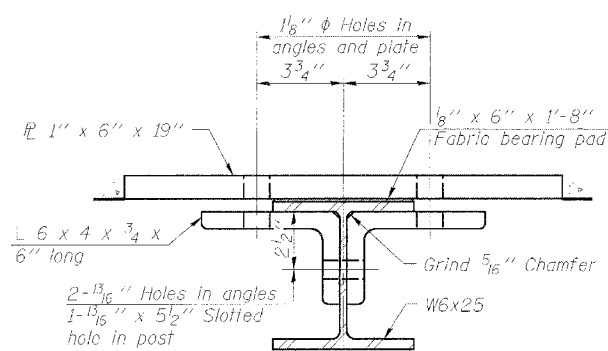
PLAN-BOTT. SPLICE R TYPICAL



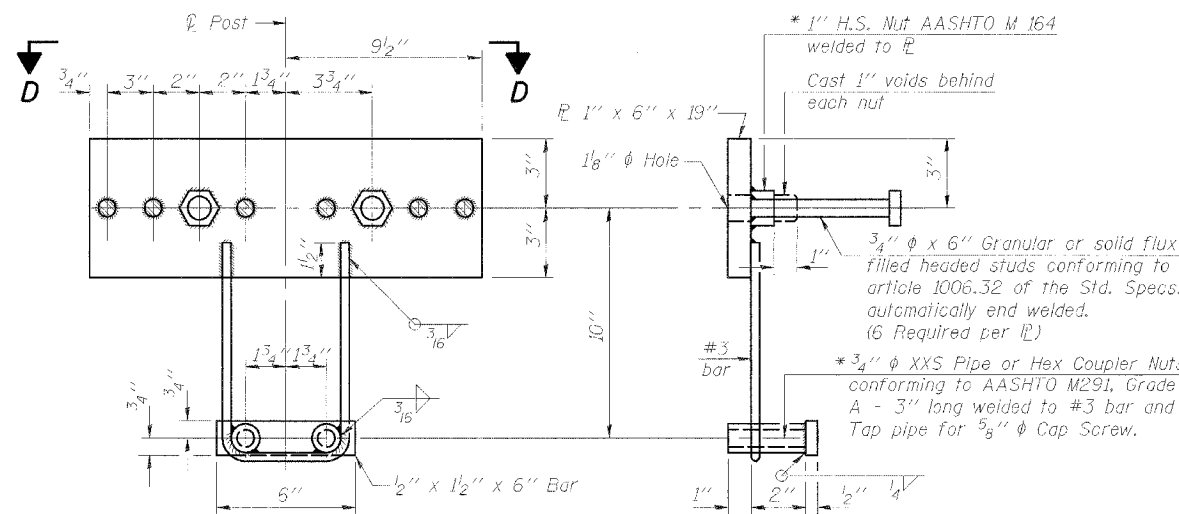
VIEW E-E



VIEW D-D



SECTION C-C



ANCHOR DEVICE

BILL OF MATERIAL

Item	Unit	Quantity
Steel Railing, Type SM	Foot	206

Notes:  
All field drilled holes shall be coated with an approved zinc rich paint before erection.  
For multi-span bridges, sufficient 1/4" x 6" x 1'-2" galvanized steel shims shall be provided to align rail between adjacent spans. Cost included with Steel Railing, Type SM.  
All steel railing elements shall be galvanized according to Article 509.05 of the Standard Specifications.  
\* The studs of the anchor devices shall be placed below the top reinforcement bars and the outermost longitudinal reinforcement bar shall be placed directly above the studs of the rail post anchor device.

**STEEL RAILING, TYPE SM  
WITH CONCRETE  
WEARING SURFACE AND CURB  
U.S. RTE. 20 (F.A.P. 426)  
OVER E.J. & E. RAILROAD  
COOK COUNTY, STA. 106+03.50  
STRUCTURE NO. 016-0219**

**STS Consultants**  
111 NE Jefferson Ave.  
Peoria, Illinois 61602  
Ph: (309) 676-8464  
FAX: (309) 676-5445  
IL Design Firm Reg. No. 104-001518

DESIGNED	DDB
CHECKED	LLV
DRAWN	MGM
CHECKED	LLV

EXAMINED	200
PASSED	ENGINEER OF BRIDGE DESIGN
	ENGINEER OF BRIDGES AND STRUCTURES

(6'-3" Maximum Post Spacing) (5" minimum to 7/8" maximum CWS thickness)

\* Threaded areas shall be plugged or blocked off during casting of beam. Galvanized after fabrication.