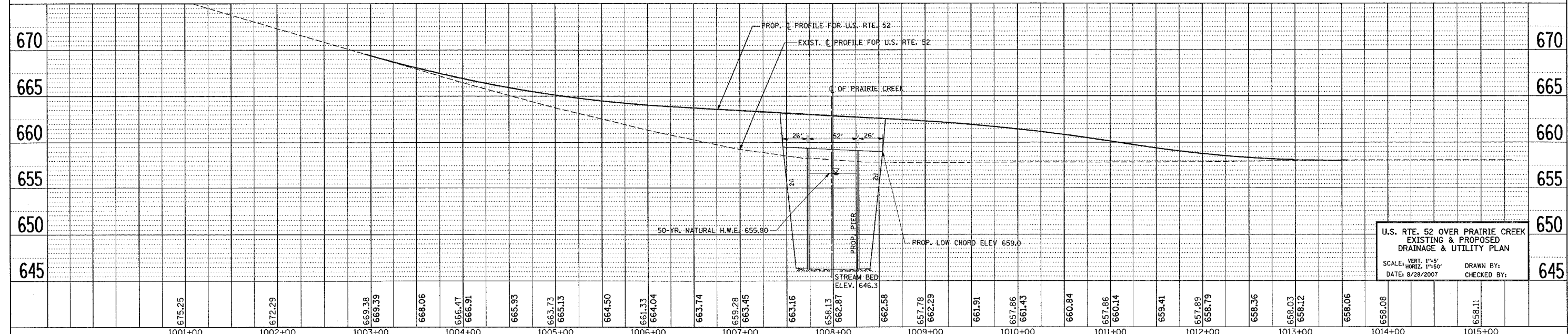
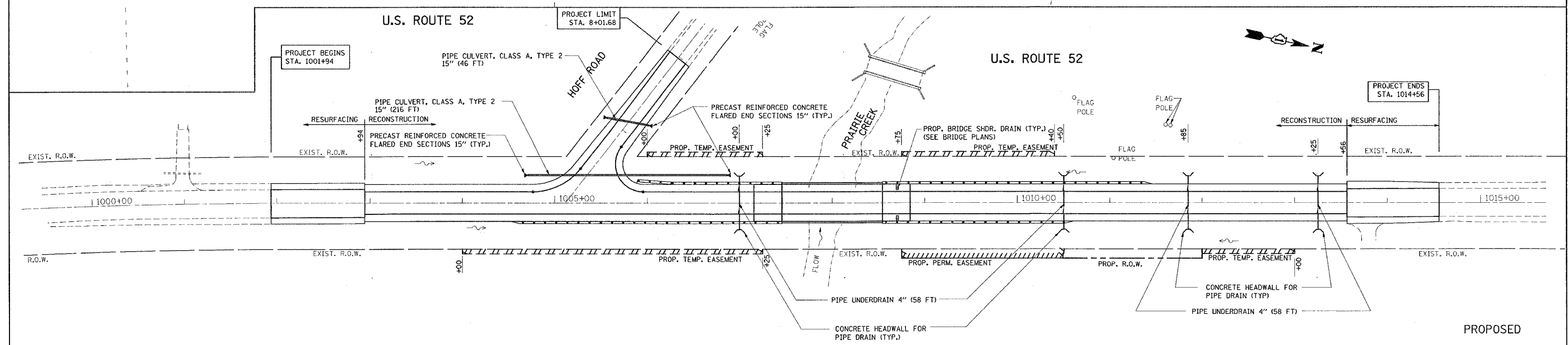
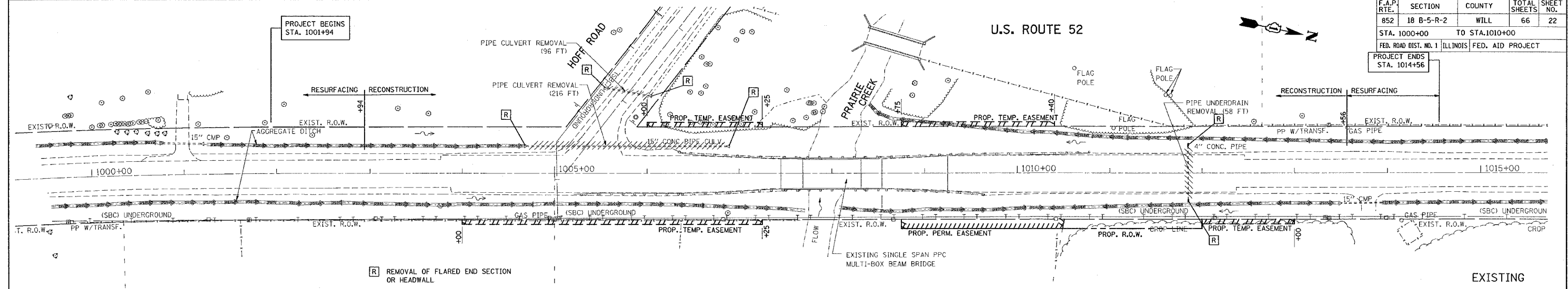


*REF-topo01
*REF-PP01
*REF-pro01

CONTRACT NO. 62845

F.A.P. RTE.	SECTION	COUNTY	TOTAL SHEETS	SHEET NO.
852	18 B-5-R-2	WILL	66	22
STA. 1000+00		TO STA. 1010+00		
FED. ROAD DIST. NO. 1 ILLINOIS FED. AID PROJECT				



U.S. RTE. 52 OVER PRAIRIE CREEK
EXISTING & PROPOSED
DRAINAGE & UTILITY PLAN
VERT. 1"=5'
SCALE: HORIZ. 1"=50'
DATE: 8/28/2007
DRAWN BY:
CHECKED BY: