

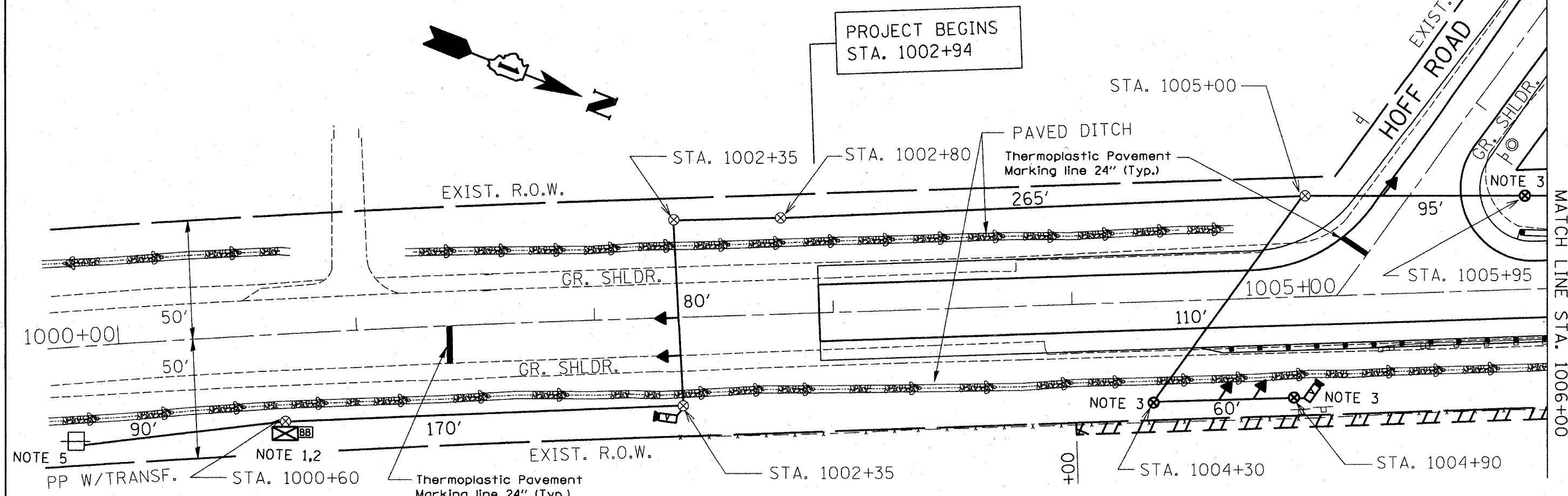
| | | | | |
|-----------------------|------------|---------------------------|--------------|-----------|
| F.A.U. NO. | SECTION | COUNTY | TOTAL SHEETS | SHEET NO. |
| 852 | 18-B-5-R-2 | WILL | 66 | 25 |
| STA. | | TO STA. | | |
| FED. ROAD DIST. NO. 1 | | ILLINOIS FED. AID PROJECT | | |

Notes:

- ① CONTROLLER WITH STEEL BASE CABINET AND BATTERY BACK-UP CABINET SHALL BE MOUNTED ON A WOOD STAND.
- ② UN-INTERRUPTABLE POWER SUPPLY(UPS) SHALL BE INCLUDED IN "TEMPORARY BRIDGE TRAFFIC SIGNAL INSTALLATION" PAY ITEM.
- ③ 5 WOOD POLES INSTALLED BY THE TRAFFIC CONTRACTOR (SEE TEMPORARY TRAFFIC SIGNAL PLANS FOR LOCATIONS).
- ④ PROPOSED WOOD POLES FOR ROADWAY LIGHTING SHALL BE USED TO SUPPORT TRAFFIC SIGNAL CABLE.
- ⑤ TRAFFIC SIGNAL AND ROADWAY LIGHTING SHALL UTILIZE A COMBINATION ELECTRIC SERVICE BOX. (SEE DETAIL)
- ⑥ ALL SIGNAL HEADS SHALL BE L.E.D.

TEMPORARY TRAFFIC SIGNAL LEGEND

- | | | | |
|---|---|--|-----|
| TEMPORARY TRAFFIC SIGNAL HEAD SPAN WIRE MOUNTED ORIGINAL LOCATION | ➔ | TEMPORARY PEDESTRIAN PUSHBUTTON DETECTOR | ⊙ |
| TEMPORARY TRAFFIC SIGNAL HEAD SPAN WIRE MOUNTED SECONDARY LOCATION | ➔ | MICROWAVE VEHICLE SENSOR | M |
| TEMPORARY WOOD POLE (CLASS 5 OR BETTER) 45 FOOT (13.7m) MINIMUM | ⊗ | EMERGENCY VEHICLE LIGHT DETECTOR | ⊙ |
| TEMPORARY CONTROLLER CABINET | ⊗ | CONFIRMATION BEACON | ⊙ |
| TEMPORARY SPAN WIRE, TETHER WIRE, AND CABLE | — | VEHICLE DETECTOR, INDUCTION LOOP | □ |
| TEMPORARY SERVICE INSTALLATION | ⊕ | COMMON TRENCH | CT |
| TEMPORARY PEDESTRIAN SIGNAL HEAD, BRACKET MOUNTED | ⊕ | UNIT DUCT | U |
| TELEPHONE CONNECTION | ⊕ | G.S. CONDUIT IN TRENCH (T) OR PUSHED (P) | --- |
| | | HANDHOLE | ⊕ |
| | | HEAVY DUTY HANDHOLE | ⊕ |
| | | VIDEO DETECTOR SENSOR | V |
| | | CLOSED CIRCUIT TV | C |
| | | UN-INTERRUPTABLE POWER SUPPLY (UPS) | BB |



U.S. ROUTE 52

| REVISIONS | |
|-----------|------|
| NAME | DATE |
| | |
| | |
| | |
| | |
| | |
| | |
| | |
| | |
| | |
| | |

ILLINOIS DEPARTMENT OF TRANSPORTATION
 TEMPORARY TRAFFIC SIGNAL PLAN
U.S. ROUTE 52 OVER PRAIRIE CREEK
 SCALE: VERT. N.T.S.
 DATE 8/6/2007
 DRAWN BY: GN
 DESIGNED BY: DC
 CHECKED BY: DAO