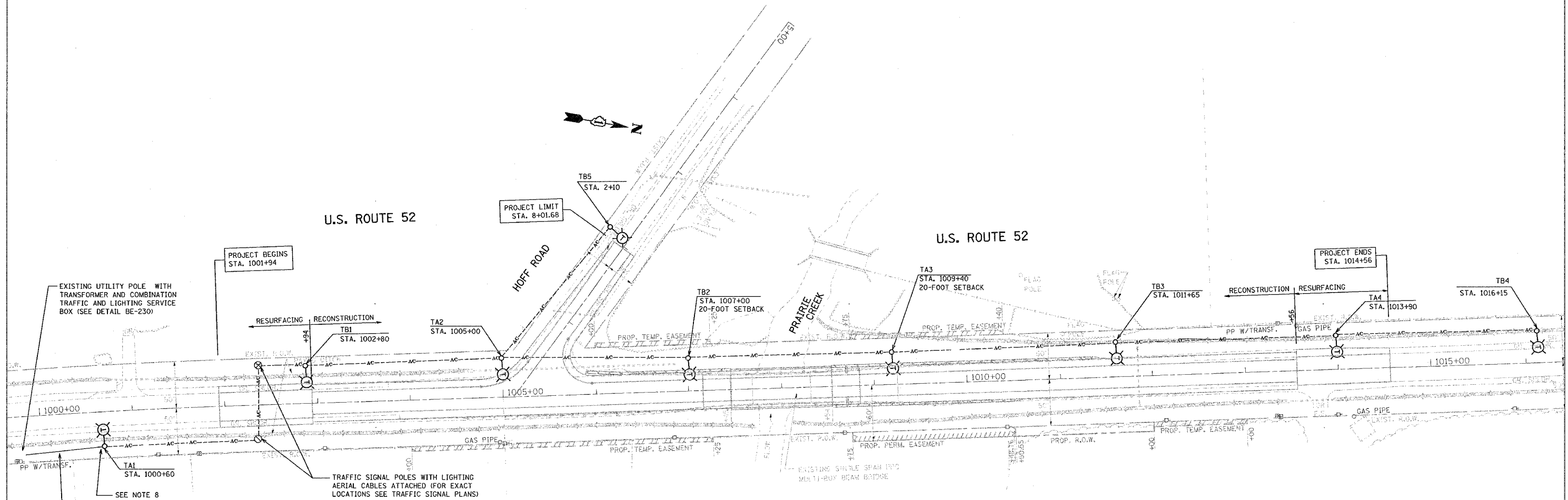


F.A.P. RTE.	SECTION	COUNTY	TOTAL SHEETS	SHEET NO.
852	18 B-5-R-2	WILL	66	28
STA.	TO STA.			
FED. ROAD DIST. NO.	ILLINOIS	FED. AID PROJECT		



**LEGEND**

- 60-FOOT TEMPORARY WOOD POLE WITH 15-FOOT MAST ARM, 400W MULTI-TAP LUMINAIRE WITH PHOTOCELL, 50-FOOT MOUNTING HEIGHT
- 60-FOOT WOOD POLE SHARED WITH TRAFFIC (SEE NOTE 2)
- AERIAL CABLE 3 1/4 #4 WITH MESSENGER WIRE ALUMINUM
- 3-1/4 #4 & 1/4 #6 GND. 600V, (EPR-TYPE-TC-RHH) IN 2 1/2" RGS CONDUIT

**GENERAL NOTES**

1. ALL WOOD LIGHT POLES SHALL HAVE A MINIMUM SETBACK OF 30-FEET FROM THE EDGE OF TRAVELED PAVEMENT UNLESS OTHERWISE NOTED.
2. WOOD POLES INSTALLED BY THE TRAFFIC CONTRACTOR. (SEE TRAFFIC SIGNAL PLANS FOR ALL LOCATIONS).
3. TEMPORARY LIGHT POLES TA1-TA4 & TB1-TB3 ARE SHARED AND COMMON FOR LIGHTING AND TRAFFIC SYSTEMS. (UNLESS OTHERWISE NOTED). THESE LIGHT POLES AND TB4 & TB5 SHALL BE INSTALLED BY THE LIGHTING CONTRACTOR.
4. SYSTEM VOLTAGE IS 120/240V SINGLE PHASE. LUMINAIRE OPERATING VOLTAGE SHALL BE 120V.
5. THE TEMPORARY LIGHT POLES SHALL BE LABELED AS SHOWN ON THE PLANS. THIS WORK SHALL BE PART OF THE TEMPORARY LIGHT POLE PAY ITEM.
6. ALL TEMPORARY LIGHT POLES SHALL BE INSTALLED, TESTED, AND OPERATIONAL BEFORE THE START OF CONSTRUCTION.
7. THE UTILITY COMPANY SHALL BE CONTACTED AND NOTIFIED AS SOON AS POSSIBLE OF THE PENDING ELECTRICAL CONNECTIONS AND INSTALLATION.
8. SEE "AERIAL CABLE CONNECTION DETAIL" SHEET BE 801 FOR CONNECTION OF THE ELECTRICAL CABLE ASSEMBLY TO THE AERIAL CABLE.
9. THE 2-POLE 40A BREAKER IN THE COMBINATION TRAFFIC AND LIGHTING SERVICE BOX SHALL BE THE MAIN DISCONNECTING MEANS FOR THE LIGHTING.

3-1/4 #4 & 1/4 #6 MULTICONDUCTOR CABLE IN CONDUIT

SEE NOTE 8

TRAFFIC SIGNAL POLES WITH LIGHTING AERIAL CABLES ATTACHED (FOR EXACT LOCATIONS SEE TRAFFIC SIGNAL PLANS)

REVISIONS	
NAME	DATE

ILLINOIS DEPARTMENT OF TRANSPORTATION

US 52 OVER PRAIRIE CREEK  
TEMPORARY LIGHTING PLANS

SCALE: VERT. NONE  
HORIZ. NONE  
DATE: AUGUST 2007  
DRAWN BY: AC  
CHECKED BY: