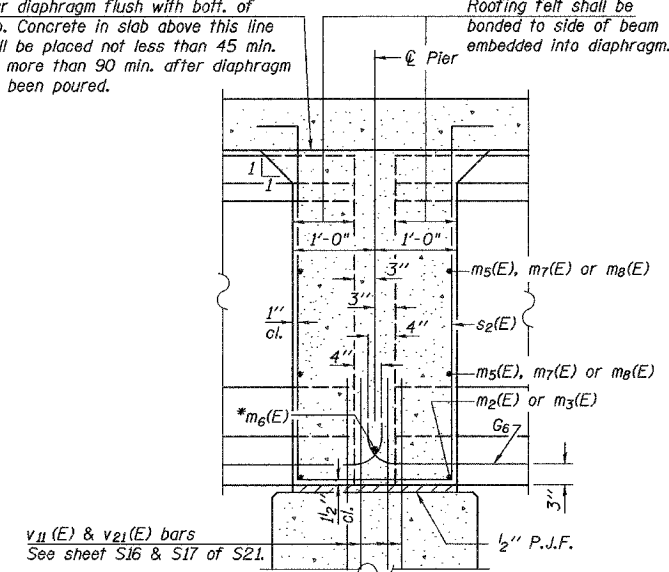
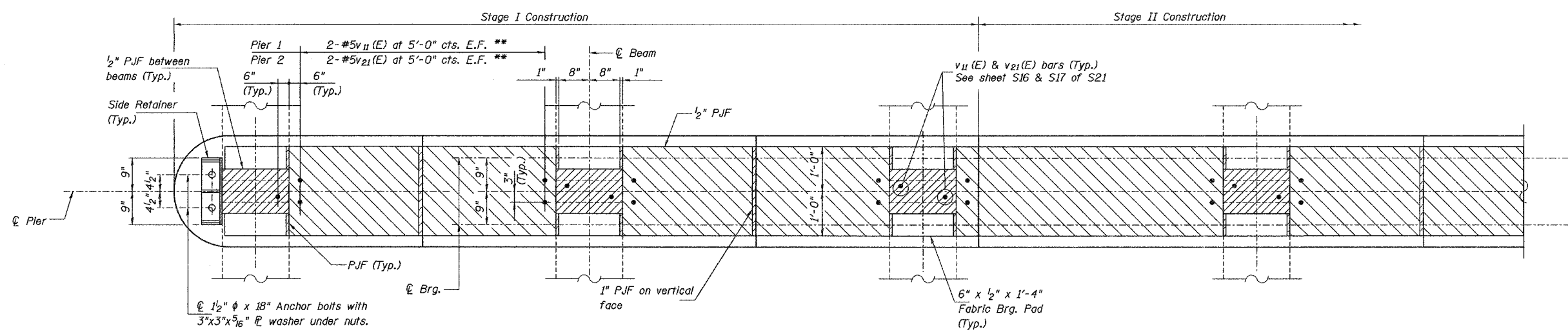


Pour diaphragm flush with bott. of slab. Concrete in slab above this line shall be placed not less than 45 min. nor more than 90 min. after diaphragm has been poured.

Roofing felt shall be bonded to side of beam embedded into diaphragm.



* Tightly fasten the #8 bars together with No. 9 wire ties.



Note: See sheet S7 for location of Sections A-A and B-B.

COLLINS ENGINEERS
123 N. WACKER DR., SUITE 300
CHICAGO, IL 60606
(312) 704-9300
ILLINOIS PROFESSIONAL DESIGN FIRM
LICENSE NO. 184-000993

REVISIONS	
NAME	DATE

ILLINOIS DEPARTMENT OF TRANSPORTATION
US ROUTE 52 (STATE STREET)
OVER PRAIRIE CREEK
FAP RTE. 852 SEC. 18B-5-R
WILL COUNTY
STA. 1008+00.00 STRUCTURE NO. 099-4643
SUPERSTRUCTURE DETAILS-III
DRAWN BY: KAC
CHECKED BY: JMH/DGS
DATE: OCTOBER, 2004

FILE: g:\3760\FINAL_PLANS\37600106.dgn
DATE: 14-Jul-04 12:39