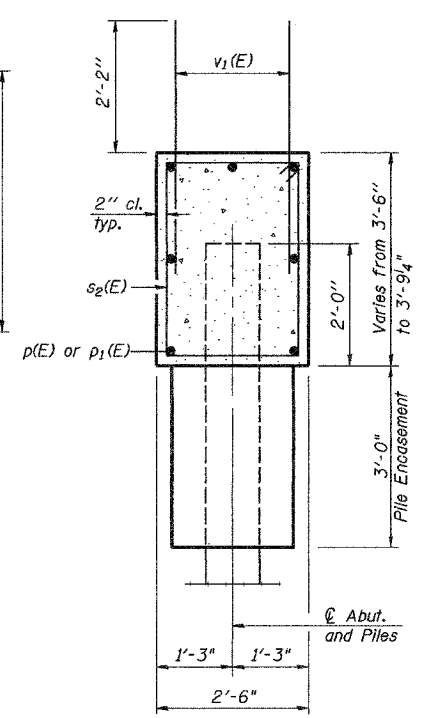


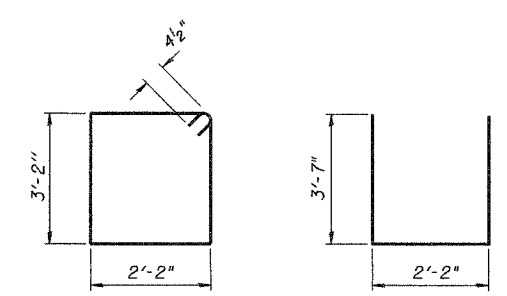
ELEVATION
(Looking North)



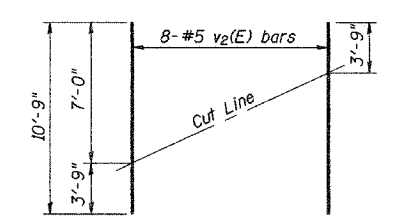
SEC. THRU ABUT.

BILL OF MATERIAL

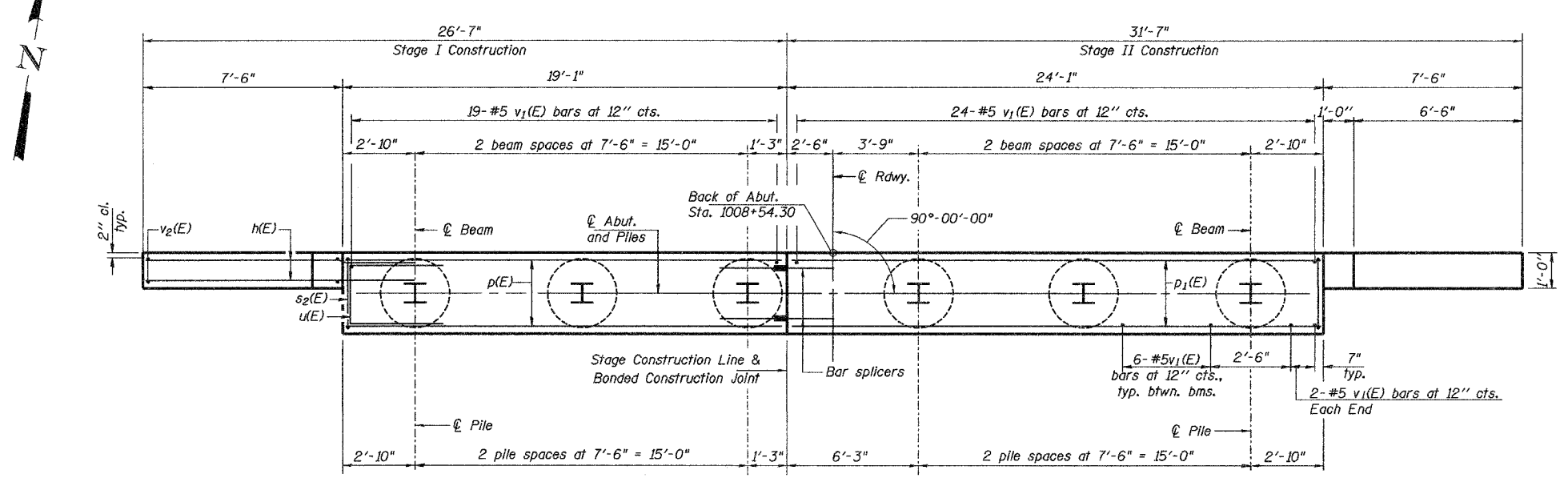
Bar	No.	Size	Length	Shape
HE	40	#5	9'-8"	
p(E)	7	#7	18'-9"	
p1(E)	7	#7	23'-9"	
s2(E)	36	#4	11'-5"	
u(E)	8	#6	9'-4"	
v1(E)	77	#5	4'-4"	
v2(E)	16	#5	10'-9"	
Concrete Structures				Cu. Yd. 17.9
Reinforcement Bars, Epoxy Coated				Pound 1930
Structure Excavation				Cu. Yd. 57.4
Concrete Encasement				Cu. Yd. 2.1
Furnishing Steel				Foot 312
Piles, HP12x74				Foot 312
Driving Piles				Foot 312



BAR s2(E) **BAR u(E)**



FIELD CUTTING DIAGRAM
Order v2(E) full length. Cut as shown and use remainder of bars in opposite face.



PLAN

PILE DATA

Type:	HP 12x74
Nominal Required Bearing:	456 kips
Allowable Resistance Available:	152 kips
Est. Length:	52'-0"
No. Production Piles:	6
No. Test Piles:	0

COLLINS ENGINEERS
123 N. WACKER DR., SUITE 300
CHICAGO, IL 60606
(312) 704-9300
ILLINOIS PROFESSIONAL DESIGN FIRM
LICENSE NO. 184-000993

REVISIONS	
NAME	DATE

ILLINOIS DEPARTMENT OF TRANSPORTATION
US ROUTE 52 (STATE STREET)
OVER PRAIRIE CREEK
FAP RTE. 852 SEC. 18B-5-R
WILL COUNTY
STA. 1008+00.00 STRUCTURE NO. 099-4643
NORTH ABUTMENT DETAILS
DRAWN BY: KAC
CHECKED BY: JMH/DGS
DATE: OCTOBER, 2004

FILE: g:\37608\FINAL PLANS\37600118.dgn
DATE: 14-Jul-04 07:34