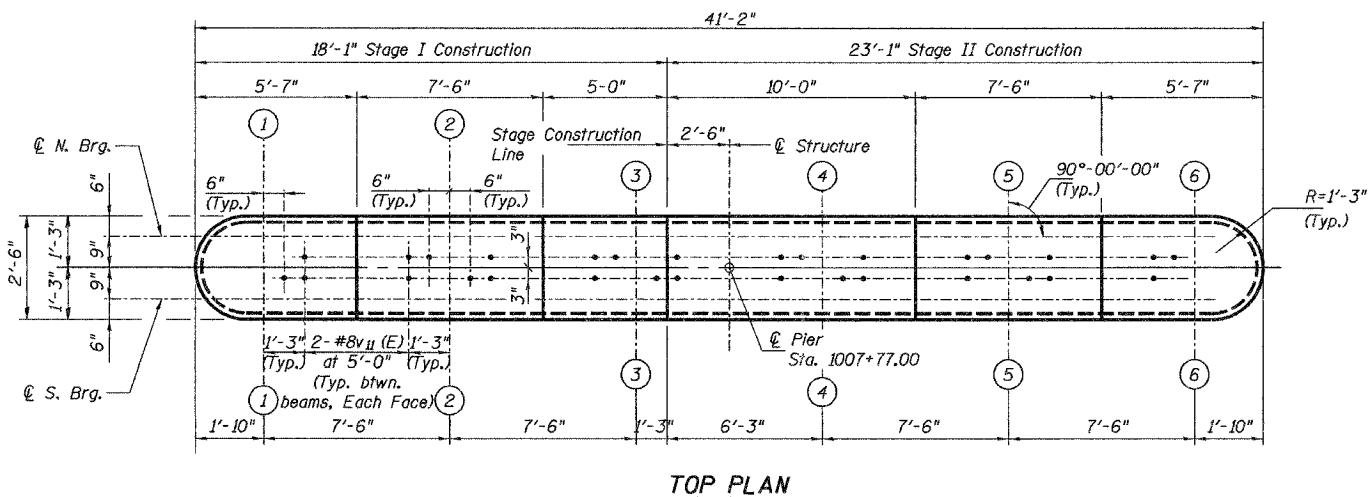


Notes: Space reinforcement in cap to miss anchor bolts.
Four steps monolithically with cap.

ROUTE NO.	SECTION	COUNTY	SHEET NO.	SHEET NO. S16
18B-5-R	WILL	66	46	S21 SHEETS
FED. ROAD DIST. NO. 7		ILLINOIS FED. AID PROJECT-		
CONTRACT NO. 62845				

PILE DATA

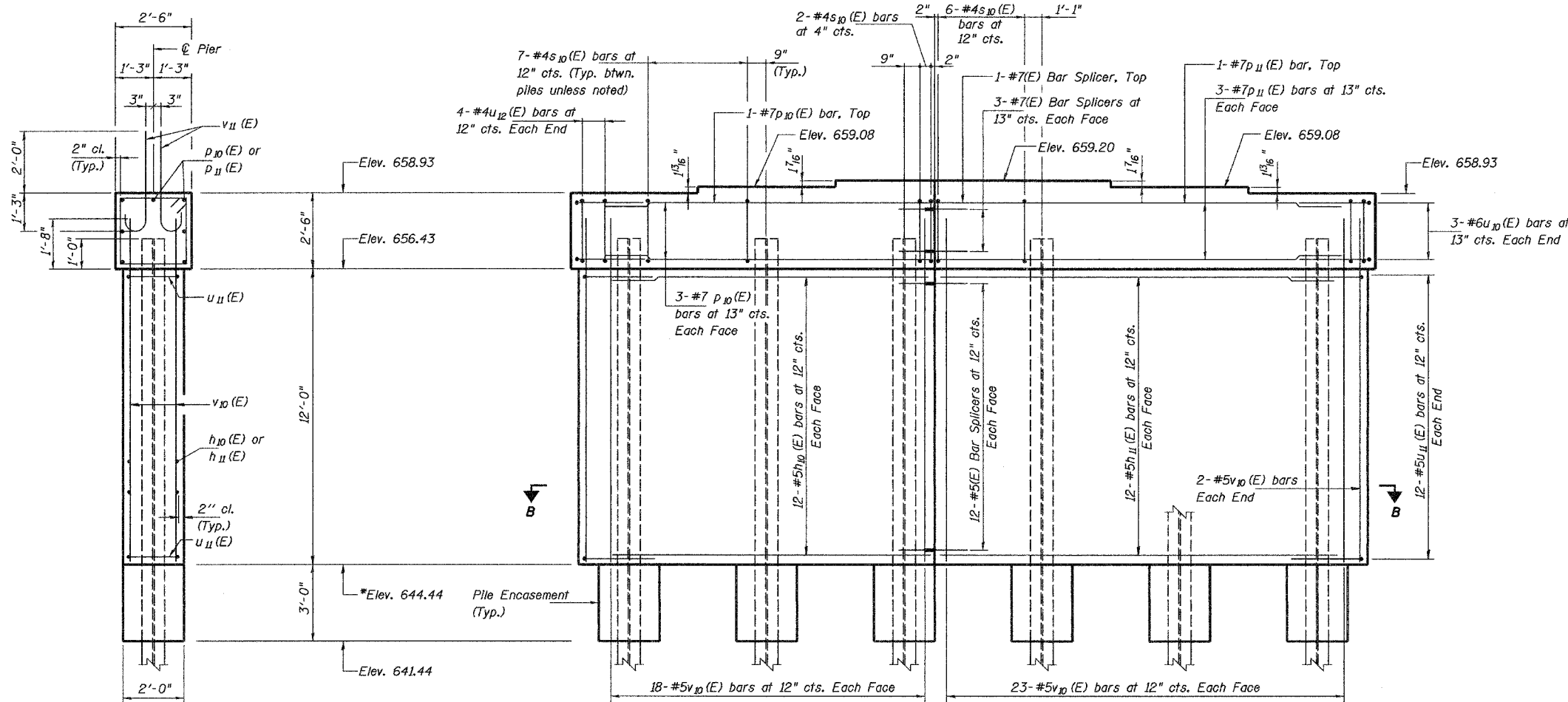
Type: HP 12x74 w/ Pile Shoes
 Nominal Required Bearing: 456 kips
 Allowable Resistance Available: 152 kips
 Est. Length: 29'-0"
 No. Production Piles: 6
 No. Test Piles: 0



TOP PLAN

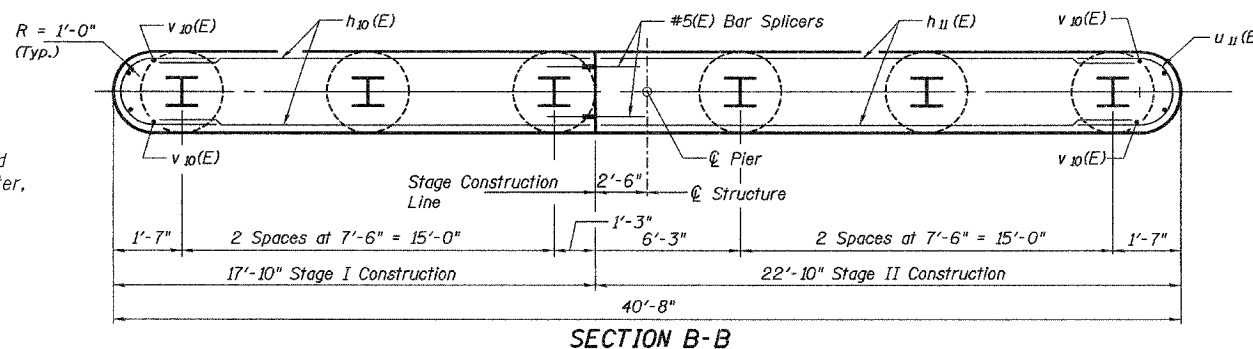
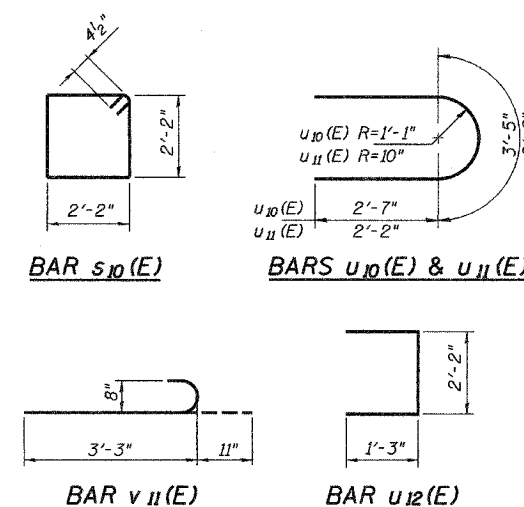
BILL OF MATERIAL

Bar	No.	Size	Length	Shape
h ₁₀ (E)	24	#5	16'-8"	—
h ₁₁ (E)	24	#5	21'-8"	—
p ₁₀ (E)	7	#7	16'-8"	—
p ₁₁ (E)	7	#7	21'-8"	—
s ₁₀ (E)	36	#4	9'-5"	□
u ₁₀ (E)	6	#6	8'-7"	U
u ₁₁ (E)	24	#5	7'-0"	U
u ₁₂ (E)	8	#4	4'-8"	□
v ₁₀ (E)	86	#5	13'-6"	—
v ₁₁ (E)	30	#8	4'-2"	—
Concrete Structures	Cu. Yd.	46.4		
Structure Excavation	Cu. Yd.	139		
Reinforcement Bars, Epoxy Coated	Pound	3490		
Underwater Structure Excavation Protection Location 1	Each	1		
Concrete Encasement	Cu. Yd.	2.1		
Furnishing Steel Piles, HP12x74	Foot	174		
Pile Shoes	Each	6		
Driving Piles	Foot	174		



ELEVATION
(Looking North)

END VIEW



SECTION B-B

* Forms shall be placed below Elev 644.44 after excavation for pier wall. Reinforcement and concrete encasement shall be poured underwater into forms. If a portion of the pier wall is under water, concrete shall be tremied under water into forms according to Article 503.08 of the Standard Specifications. Concrete shall be tremied to an elevation 1'-0" above the water level at the time of construction.

COLLINS ENGINEERS
 123 N. WACKER DR., SUITE 300
 CHICAGO, IL 60606
 (312) 704-9300
 ILLINOIS PROFESSIONAL DESIGN FIRM
 LICENSE NO. 184-000993

REVISIONS	
NAME	DATE

ILLINOIS DEPARTMENT OF TRANSPORTATION
 US ROUTE 52 (STATE STREET)
 OVER PRAIRIE CREEK
 FAP RTE. 852 SEC. 18B-5-R
 WILL COUNTY
 STA. 1008+00.00 STRUCTURE NO. 099-4643
PIER 1 DETAILS
 DRAWN BY: KAC
 CHECKED BY: JMH/DGS
 DATE: OCTOBER, 2004

FILE: q:\37608\FINAL PLANS\3760010.dgn
 DATE: 15-Jul-04 09:07