

F.A. RTE.	SECTION	COUNTY	TOTAL SHEETS	SHEET NO.
VAR.	2004-127 I	*	15	1

* COOK, DU PAGE, LAKE AND WILL

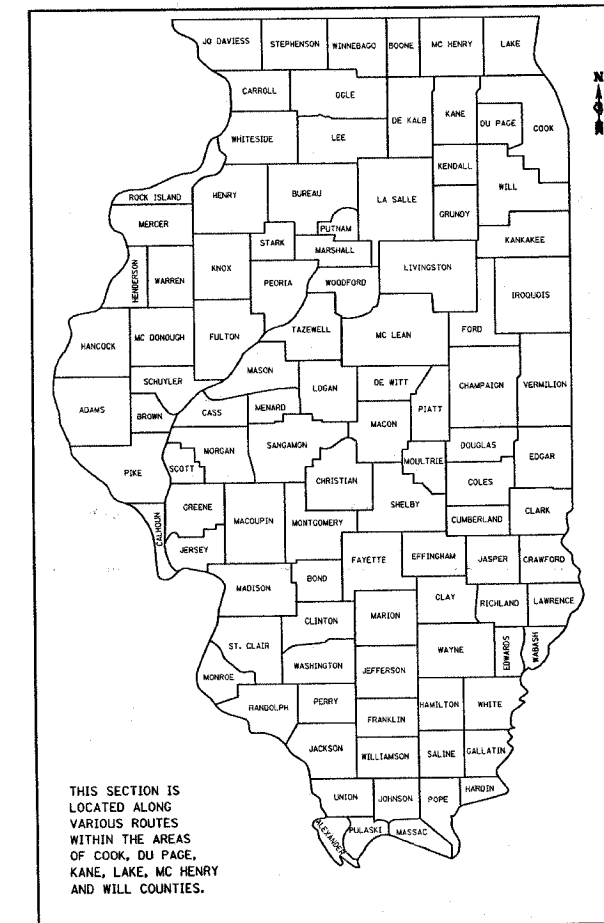
D-91-089-05

STATE OF ILLINOIS
DEPARTMENT OF TRANSPORTATION
DIVISION OF HIGHWAYS

**PROPOSED
HIGHWAY PLANS**

ROUTE: VARIOUS DISTRICT ONE
SECTION: 2004-127I
COUNTY: VARIOUS (COOK, DUPAGE, LAKE AND WILL)
EXPRESSWAY HIGHWAY CLEANING (SWEEPING)
C-91-089-05

FOR INDEX OF SHEETS, SEE SHEET NO. 2



LOCATION MAPS - SEE INDEX OF SHEETS

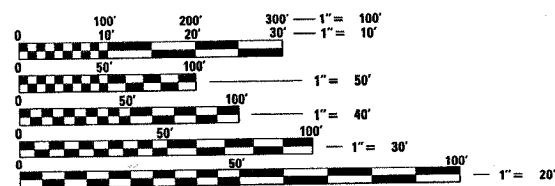
STATE OF ILLINOIS
DEPARTMENT OF TRANSPORTATION
DIVISION OF HIGHWAYS

SUBMITTED August 30 20 07
Diane O'Keefe
DEPUTY DIRECTOR OF HIGHWAYS, REGION ENGINEER

October 12 20 07
Eric E. Hara
ENGINEER OF DESIGN AND ENVIRONMENT

October 12 20 07
Melton R. See
DIRECTOR OF HIGHWAYS, CHIEF ENGINEER

**PRINTED BY THE AUTHORITY
OF THE STATE OF ILLINOIS**



FULL SIZE PLANS HAVE BEEN PREPARED USING STANDARD ENGINEERING SCALES. REDUCED SIZED PLANS WILL NOT CONFORM TO STANDARD SCALES. IN MAKING MEASUREMENTS ON REDUCED PLANS, THE ABOVE SCALES MAY BE USED.

J.U.L.I.E.
JOINT UTILITY LOCATION INFORMATION FOR EXCAVATION
1-800-892-0123

CONTRACT NO. 62894

DISTRICT ONE/ BUREAU OF DESIGN
PLAN PREPARATION ENGINEER: K. ENG/ R. BORO (847) 705-4178

F.A. RT.:	SECTION	COUNTY	TOTAL SHEETS	SHEET NO.
VAR.	2004-127 I	*	15	2
STA.	TO STA.			
FED. ROAD DIST. NO.	ILLINOIS	FED. AID PROJECT		

* COOK, DU PAGE, LAKE AND WILL

INDEX OF SHEETS

1. TITLE SHEET
2. INDEX OF SHEETS
APPLICABLE STATE STANDARDS
3. SUMMARY OF QUANTITIES
SCHEDULE OF CLEANING STARTING DATES
4. EXPRESSWAY TYPICAL SECTIONS
5. LIMITS OF SIGN CLEANING
- 6.- 10. LOCATION SHEETS
- 11- 12. EXPRESSWAY LABORING LOCATION MAPS
13. DISTRICT ONE DETAILS: TRAFFIC CONTROL DEVICES FOR
HIGHWAY AND SIGN CLEANING OPERATIONS-NIGHT TIME ONLY
14. DISTRICT ONE DETAILS: TRAFFIC CONTROL DEVICES FOR
HIGHWAY AND SIGN CLEANING OPERATIONS-DAY TIME ONLY
15. TRAFFIC CONTROL DETAILS FOR SHOULDER CLOSURES
AND PARTIAL RAMP CLOSURES

STATE STANDARDS

- | | |
|------------|---|
| 701101-01 | OFF-ROAD OPERATION 2L, 2W, DAY ONLY FOR SPEEDS >45 MPH |
| 701400-02 | APPROACH TO LANE CLOSURE, FREEWAY/EXPRESSWAY |
| 701401-03 | LANE CLOSURE, FREEWAY/EXPRESSWAY |
| 701 411-03 | LANE CLOSURE, MULTILANE AT ENTERANCE/EXIT RAMP FOR SPEEDS >45 MPH. |
| 701426-02 | LANE CLOSURE, MULTILANE INTERMITTENT OR MOVING OPERATION FOR SPEEDS >45 MPH |
| 702001-06 | TRAFFIC CONTROL DEVICES |

PLOT DATE = 9/6/2007
 FILE NAME = c:\purojects\127988\aspep\puroject\127988.dgn
 USER NAME = bndara

REVISIONS		ILLINOIS DEPARTMENT OF TRANSPORTATION
NAME	DATE	
		INDEX OF SHEETS AND STATE STANDARDS
SCALE:	VERT. DATE	DRAWN BY CHECKED BY

F.A. RTE.	SECTION	COUNTY	TOTAL SHEETS	SHEET NO.
VAR.	2004-127 I	*	15	3
STA.	TO STA.			
FED. ROAD DIST. NO.	ILLINOIS	FED. AID PROJECT		

* COOK, DU PAGE, LAKE AND WILL

SUMMARY OF QUANTITIES

CODE NO.	ITEM	UNIT	MAIN QUANTITY
X0323141	SUPPLEMENTAL SWEEPING	MILE	150
X0324104	INNER CITY SWEEPING (SPECIAL)	MILE	1763
X0329915	FULL EXPRESSWAY CLEANING CYCLE	EACH	6
X0330650	INITIAL EXPRESSWAY CLEANING CYCLE	EACH	1
X0414200	SIGN CLEANING CYCLE	EACH	1
X0539100	INNER CITY EXPRESSWAY CLEANING CYCLE	EACH	5

URBAN
100% STATE

EXPRESSWAY CLEANING SCHEDULE OF ANTICIPATED STARTING DATES - 2008

INITIAL CLEANING CYCLE	----	MARCH 1
1st FULL CLEANING CYCLE	----	MAY 1
1st INNER CITY CYCLE	----	MAY 20
2nd FULL CLEANING CYCLE	----	JUNE 7
2nd INNER CITY CYCLE	----	JUNE 27
3rd FULL CLEANING CYCLE	----	JULY 15
3rd INNER CITY CYCLE	----	AUGUST 4
4th FULL CLEANING CYCLE	----	AUGUST 22
4th INNER CITY CYCLE	----	SEPTEMBER 11
5th FULL CLEANING CYCLE	----	SEPTEMBER 28
5th INNER CITY CYCLE	----	OCTOBER 19
6th FULL CLEANING CYCLE	----	NOVEMBER 8
(RECOMMENDED TO BE COMPLETED ON OR BEFORE NOVEMBER 30)		

EXPRESSWAY CLEANING SCHEDULE OF ANTICIPATED STARTING DATES - 2009

INITIAL CLEANING CYCLE	----	MARCH 1
1st FULL CLEANING CYCLE	----	MAY 1
1st INNER CITY CYCLE	----	MAY 20
2nd FULL CLEANING CYCLE	----	JUNE 7
2nd INNER CITY CYCLE	----	JUNE 27
3rd FULL CLEANING CYCLE	----	JULY 15
3rd INNER CITY CYCLE	----	AUGUST 4
4th FULL CLEANING CYCLE	----	AUGUST 22
4th INNER CITY CYCLE	----	SEPTEMBER 11
5th FULL CLEANING CYCLE	----	SEPTEMBER 28
5th INNER CITY CYCLE	----	OCTOBER 19
6th FULL CLEANING CYCLE	----	NOVEMBER 8
(RECOMMENDED TO BE COMPLETED ON OR BEFORE NOVEMBER 30)		

SIGN CLEANING CYCLES SCHEDULE OF ANTICIPATED STARTING DATES - 2008

SIGN CLEANING CYCLE ---- MARCH 1

SIGN CLEANING CYCLES SCHEDULE OF ANTICIPATED STARTING DATES - 2009

SIGN CLEANING CYCLE ---- MARCH 1

NOTES:

- SCHEDULE MAY VARY AS DIRECTED BY THE ENGINEER.
- THE CONTRACTOR MAY NOT START CLEANING CYCLES BEFORE THE DATES SCHEDULED IN THE PLANS WITHOUT WRITTEN AUTHORIZATION FROM THE ENGINEER.
- NO WORK WILL BE ALLOWED DURING ANY LEGAL HOLIDAY PERIOD.
- ALL SCHEDULES OF ANTICIPATED STARTING DATES SHOWN ARE TENTATIVE AS DETERMINED BY THE DEPARTMENT'S OPERATIONAL NEEDS.

REVISIONS	
NAME	DATE

ILLINOIS DEPARTMENT OF TRANSPORTATION
SUMMARY OF QUANTITIES
AND
SCHEDULE OF STARTING DATES

SCALE: VERT.
DATE: HORIZ.

DRAWN BY
CHECKED BY

Rev.

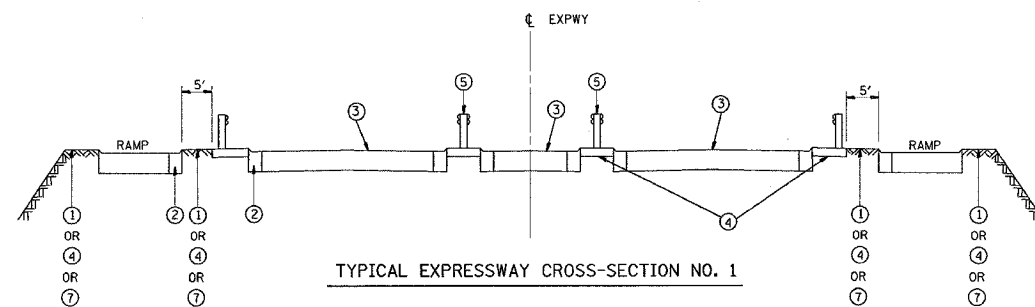
F.A. RTE.	SECTION	COUNTY	TOTAL SHEETS	SHEET NO.
VAR.	2004-127 I	*	15	4
STA.		TO STA.		
FED. ROAD DIST. NO.	ILLINOIS	FED. AID PROJECT		

* COOK, DU PAGE, LAKE AND WILL

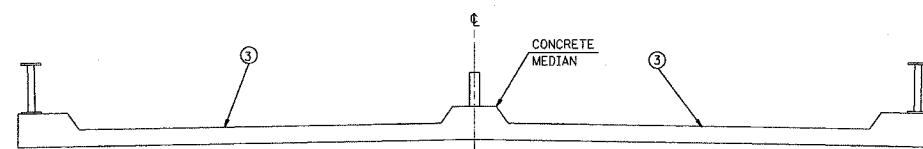
LEGEND

- ① AREA OF RUBBISH REMOVAL
- ② CURB AND GUTTER
- ③ TRAVELED ROADWAY
- ④ STABILIZED SHOULDER OR MEDIAN
- ⑤ STEEL PLATE GUARD RAIL
- ⑥ CONCRETE BARRIER
- ⑦ AGGREGATE SHOULDER (TO BE CLEANED BY HAND TOOLS OF DEBRIS/LITTER)
- ⑧ RAISED CONCRETE MEDIAN

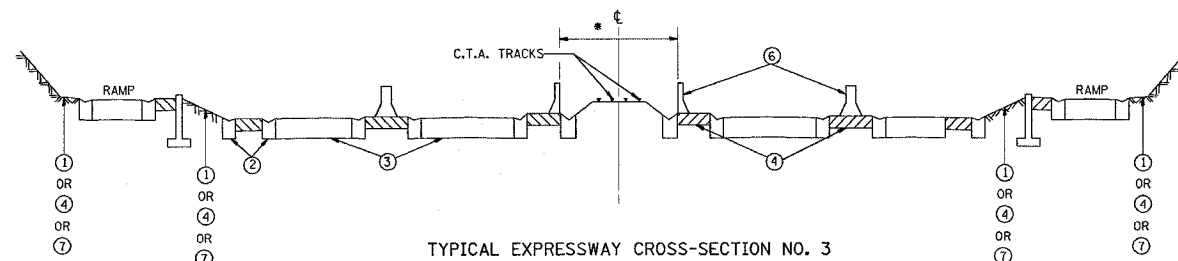
NOTE: SLOPE WALLS UNDER BRIDGES ARE NOT INCLUDED IN AREAS TO BE CLEANED. DEBRIS SHALL BE REMOVED FROM ALL AREAS REGARDLESS OF SURFACE TYPE. THIS INCLUDES FULL WIDTHS OF ANY TYPE OF SHOULDER INCLUDING OUT TO A PARALLEL LINE WITH THE ROADWAY, RAMP OR SHOULDER TO A POINT FIVE FEET FROM THE EDGE OF ANY TYPE OF STABILIZING SURFACE (PAVEMENT OR SHOULDER AND FIVE FEET BEHIND ANY CURB OR GUARDRAIL).



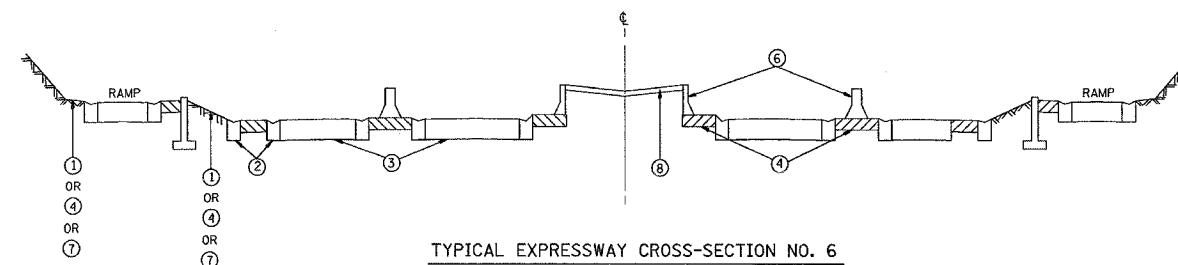
TYPICAL EXPRESSWAY CROSS-SECTION NO. 1



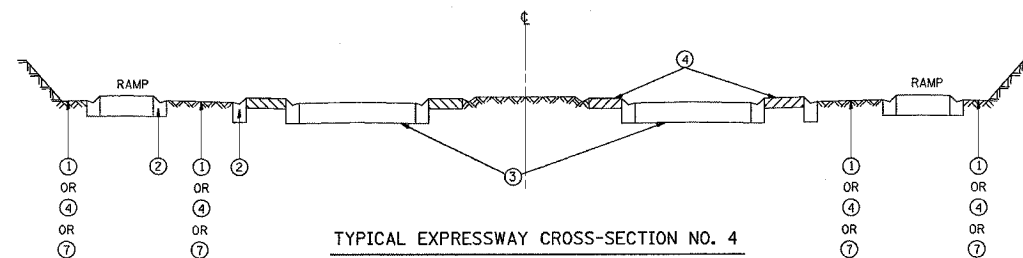
TYPICAL CROSS-SECTION OF ELEVATED ROADWAY
TYPICAL EXPRESSWAY CROSS-SECTION NO. 2



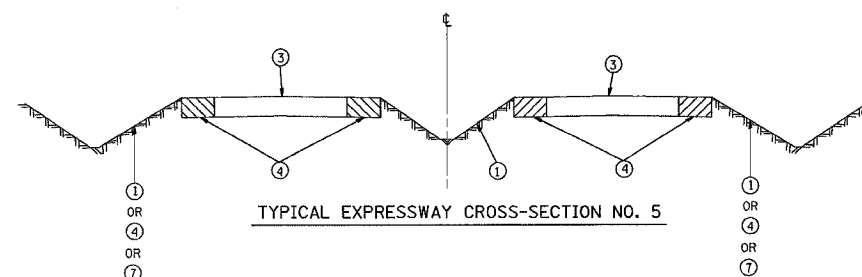
TYPICAL EXPRESSWAY CROSS-SECTION NO. 3



TYPICAL EXPRESSWAY CROSS-SECTION NO. 6



TYPICAL EXPRESSWAY CROSS-SECTION NO. 4



TYPICAL EXPRESSWAY CROSS-SECTION NO. 5

REVISIONS	
NAME	DATE

ILLINOIS DEPARTMENT OF TRANSPORTATION

TYPICAL EXPRESSWAY CROSS-SECTIONS

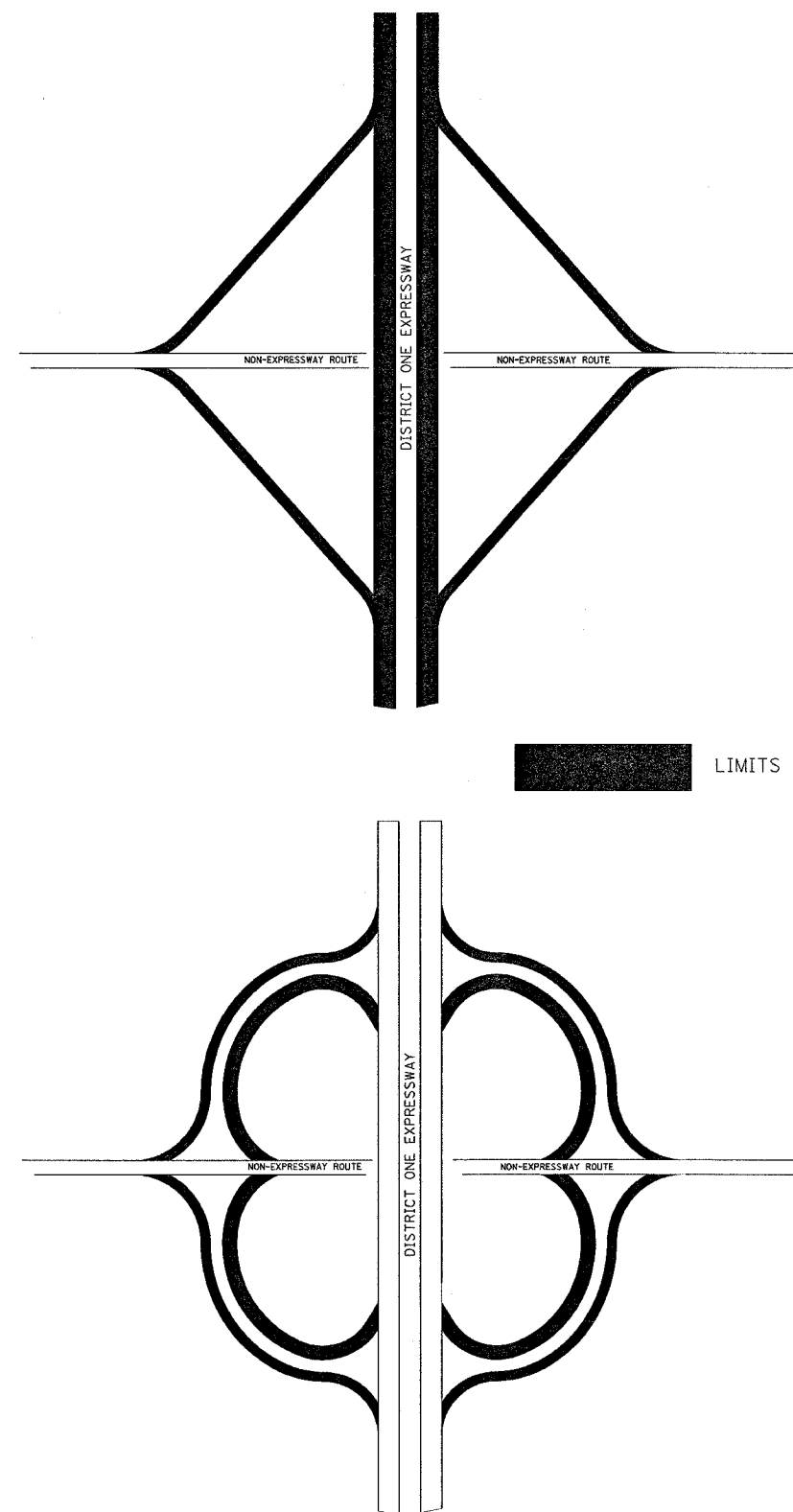
SCALE: VERT.
HORIZ.
DATE

DRAWN BY
CHECKED BY

F.A. RTE.	SECTION	COUNTY	TOTAL SHEETS	SHEET NO.
VAR.	2004-127 I	*	15	5
STA.		TO STA.		
FED. ROAD DIST. NO.	ILLINOIS FED. AID PROJECT			

* COOK, DU PAGE, LAKE AND WILL

EXPRESSWAY PARTNERSHIP RECOGNITION SIGN LOCATIONS



NO.	SPONSOR	LOCATION
1	MID-TOWN TENNIS	KENNEDY, OUTBOUND, NORTH AVE. TO FULLERTON
2	U.S. CELLULAR	KENNEDY, OUTBOUND, HARLEM TO CANFIELD
3	UNILOCK	KENNEDY, OUTBOUND, CANFIELD TO CUMBERLAND
4	MONARCH STEEL	KENNEDY, INBOUND, CUMBERLAND TO CANFIELD
5	MIDWEST GROUNDCOVERS/TRADING	KENNEDY, INBOUND, NAGLE TO CENTRAL
6	CHICAGO CUBS	KENNEDY, INBOUND, IRVING PARK TO BELMONT
7	900 N. MICHIGAN SHOPS	KENNEDY, INBOUND, FULLERTON TO NORTH
8	CHICAGO BEARS	KENNEDY, INBOUND, NORTH AVE. TO OGDEN
9	MILLER BREWING	KENNEDY, OUTBOUND, AT OGDEN ENTRANCE
10	CHICAGO BULLS	KENNEDY, OUTBOUND, AT MILWAUKEE EXIT
11	McGRATH LEXUS	KENNEDY, OUTBOUND, AT DIVISION
12	HOME DEPOT, INC.	KENNEDY, OUTBOUND, AT NORTH AVE.
13	A. FINKL & SONS/GENERAL IRON	KENNEDY, OUTBOUND, AT ARMITAGE
14	BUCKTOWN GARDEN CLUB	KENNEDY, OUTBOUND, AT CORTLAND/ASHLAND
15	GUSTITUS GROUP	KENNEDY, OUTBOUND, AT FULLERTON
16	LINCOLN PARK YOUNG PROFESSIONALS	KENNEDY, IN/OUTBOUND, AT DAMEN
17	UBS	KENNEDY, OUTBOUND, AT IRVING PARK
18	EDWARD FOX PHOTOGRAPHY	KENNEDY, OUTBOUND, AT LAWRENCE
19	ESURANCE	KENNEDY, OUTBOUND, AT BRYN MAWR EXIT
20	McGINTY BROTHERS	KENNEDY, OUTBOUND, AT CUMBERLAND EXIT (WEST SIDE)
21	MARILYN MIGLIN LP	KENNEDY, OUTBOUND, AT CUMBERLAND EXIT (EAST SIDE)
22	Dr. FISHMAN	KENNEDY, OUTBOUND AT ADDISON ENTRANCE RAMP
23	GALLERIA MARCHETTI	KENNEDY, OUTBOUND AT ONTARIO ENTRANCE
24	TRIBE AGENCY	KENNEDY, OUTBOUND AT DAMEN AVE. ENTRANCE
25	GOLUP AND COMPANY	KENNEDY, INBOUND, MILWAUKEE TO OGDEN
26	MESIROW FINANCIAL	KENNEDY, INBOUND, AT MILWAUKEE ENTRANCE
27	GALE STREET INN	KENNEDY, INBOUND, AT AUSTIN EXIT
28	EDWARD FOX PHOTOGRAPHY	KENNEDY, INBOUND, AT PULASKI ENTRANCE
29	MARMOM GROUP, INC.	KENNEDY, INBOUND AT FULLERTON
30	A. FINKL & SONS/GENERAL IRON	KENNEDY, INBOUND, AT ARMITAGE
31	GOOSE ISLAND BEER COMPANY	KENNEDY, INBOUND, AT NORTH AVE ENTRANCE
32	SAM'S WINE AND SPIRITS	KENNEDY, INBOUND, AT NORTH AVE EXIT
33	CHRISTY WEBBER & CO.	KENNEDY, INBOUND, AT DIVISION
34	THE JOHN BUCK COMPANY	KENNEDY, INBOUND, AT OGDEN EXIT
35	YELLOW CAB	KENNEDY, SOUTHBOUND, GRAND TO HUBBARD
36	ESURANCE	KENNEDY, SOUTHBOUND, FULTON TO LAKE
37	CLEAR CHANNEL	KENNEDY, SOUTHBOUND, RANDOLPH TO WASHINGTON
38	HORSESHOE CASINO	KENNEDY, SOUTHBOUND, WASHINGTON TO MADISON
39	RPM ADVERTISING	KENNEDY, SOUTHBOUND, MADISON TO MONROE
40	CHICAGO FIREHOUSE	KENNEDY, SOUTHBOUND, MONROE TO ADAMS
41	EMERALD	KENNEDY, SOUTHBOUND, LAKE TO RANDOLPH
42	ENVIRONMENTAL DESIGN INT.	KENNEDY, SOUTHBOUND, ADAMS TO JACKSON
43	GIORDANO'S	KENNEDY, SOUTHBOUND, JACKSON TO VAN BUREN
44	BOND COMPANIES	KENNEDY, NORTHBOUND, HUBBARD TO GRAND
45	CHIPOTLE	KENNEDY, NORTHBOUND, ADAMS TO MONROE
46	FIJI WATER	KENNEDY, NORTHBOUND, MONROE TO MADISON
47	FIORETTI & LOWER LTD.	KENNEDY, NORTHBOUND, MADISON TO WASHINGTON
48	THE FAIRMONT HOTEL	KENNEDY, NORTHBOUND, WASHINGTON TO RANDOLPH
49	TOYOTA	KENNEDY, NORTHBOUND, JACKSON TO ADAMS
50	NBC	KENNEDY, NORTHBOUND, RANDOLPH TO LAKE
51	CHCA/NCA	KENNEDY, NORTHBOUND, LAKE TO WAYMAN
52	CONCIERGE PREFERRED	KENNEDY, NORTHBOUND, HUBBARD TO GRAND
53	HOER LANDSCAPE ARCHITECTURE	EDENS, OUTBOUND, JUNCTION TO FOSTER MILE
54	WHOLE FOODS	EDENS, IN/OUTBOUND, AT PETERSON EXIT/ENTRANCE RAMP
55	LIFE SOURCE	EDENS, OUTBOUND, FOSTER EXIT/ ENTRANCE
56	POTBELLY	EDENS, OUTBOUND, PETERSON TO DEVON
57	UNILOCK	EDENS, INBOUND, FOSTER TO JUNCTION MILE
58	NATIONAL CITY BANK	EISENHOWER, OUTBOUND, HALSTED TO ASHLAND
59	ARAMARK	EISENHOWER, OUTBOUND, WESTERN TO KEDZIE
60	COM ED	EISENHOWER, OUTBOUND, PULASKI TO CICERO
61	CHICAGO PARK DISTRICT	EISENHOWER, OUTBOUND, CICERO TO AUSTIN
62	FTD	EISENHOWER, INBOUND, KEDZIE TO WESTERN
63	UNILOCK	EISENHOWER, INBOUND, CICERO TO PULASKI
64	AMERICAN MEDICAL ASSOC.	EISENHOWER, INBOUND, LEAVITT TO DAMEN
65	RUBLOFF	EISENHOWER, INBOUND, ASHLAND TO HALSTED

NO.	SPONSOR	LOCATION
66	CHICAGO PARK DISTRICT	EISENHOWER, OUTBOUND, AT CENTRAL (EXIT/ENTRANCE RAMP)
67	CLASSIC COLOR	EISENHOWER, AT CENTRAL (MEDIANS)
68	CHINATOWN CHAMBER OF COMERCE	STEVENSON, OUTBOUND, AT STATE ST. EXIT
69	MIDWEST GENERATION	STEVENSON, OUTBOUND, AT PULASKI EXIT
70	SOUTHWEST AIRLINES	STEVENSON, OUTBOUND, AT CICERO ENTRANCE
71	CANADIAN NAT'L/ILL. CENTRAL RR	STEVENSON, INBOUND, AT CICERO
72	CHICAGO WHITE SOX	DAN RYAN, OUTBOUND, 31st ST. TO 39th ST.
73	ILL. SPORTS FACILITIES AUTHORITY	DAN RYAN, OUTBOUND, 39th ST. TO 47th ST.
74	ILLINOIS INSTITUTE OF TECHNOLOGY	DAN RYAN, INBOUND, 39th ST. TO 31st. ST.
75	HORSESHOE CASINO	DAN RYAN, POLK ST. MEDIANS
76	UNITED SERVICE COMPANIES	OHIO INTERCHANGE, NORTHBOUND INTERIOR
77	10 PIN	KENNEDY, SOUTHBOUND, AT OHIO ST. EXIT, EASTSIDE
78	HYATT HOTELS & RESORTS	OHIO INTERCHANGE, SOUTHBOUND INTERIOR
79	NEIGHBORS OF RIVER WEST	OHIO INTERCHANGE, ONTARIO ENTRANCE, SOUTH SIDE
80	TUSCANY RESTRAUNT	OHIO INTERCHANGE, ONTARIO ENTRANCE, NORTH SIDE
81	KINSELLA LANDSCAPE	OHIO INTERCHANGE, SOUTHEAST RAMP
82	BP	EDENS/KENNEDY JUNCTION
83	WASTE MANAGMENT	BISHOP FORD, AT 111th ST., WEST SIDE
84	McCORMICK GATEWAY SCULPTURE	CERMAK/MARTIN LUTHER KING DRIVE
85	HARRY CARAY'S/ DePORTER GATEWAY	OHIO/ORLEANS TRIANGLE, INBOUND
86	ALPER SERVICES	KENNEDY EXPRESSWAY OHIO INTERCHANGE

REVISIONS	
NAME	DATE

ILLINOIS DEPARTMENT OF TRANSPORTATION
EXPRESSWAY AND ARTERIAL HIGHWAY
CLEANING (SWEEPING)
**LIMITS OF
SIGN CLEANING**

SCALE: VERT.
HORIZ.
DATE

DRAWN BY
CHECKED BY

F.A. RTE.	SECTION	COUNTY	TOTAL SHEETS	SHEET NO.
VAR.	2004-127 I	*	15	6
STA.		TO STA.		
FED. ROAD DIST. NO.	ILLINOIS	FED. AID PROJECT		

* COOK, DU PAGE, LAKE AND WILL



DISTRICT NO. 1

— STATE HIGHWAYS & EXPRESSWAYS WITHIN STATE JURISDICTION (EXCEPT TOLLWAYS)

— STATE HIGHWAYS & EXPRESSWAYS TO BE CLEANED

- - - FUTURE HIGHWAYS

— VARIOUS AGENCIES HIGHWAYS

DAY CLEANING ONLY

I-290 Extension/ILL. 53/Elgin-O'Hare Expressway

I-290 from Illinois 83 to Northwest Tollway, Illinois 53 from Northwest Tollway to Lake Cook Road including I-355 from I-290 to Army Trail Road and the Elgin-O'Hare Expressway from the east side of the bridge over I-290 to U.S. Route 20.

Edens Expressway

Interstate 94 from Montrose to Dundee Road and U.S. 41 from Dundee Road to 700 lineal feet north of Illinois 137 including two ramps at Clavey Road, two ramps at West Park Avenue, four ramps at Deerpath Road and the entire US 41/Deerfield Road Interchange. Also included is Tower Road from Edens Expressway to Forestway Drive.

NIGHT CLEANING ONLY

Kennedy Expressway

Interstate 90/94 from Taylor Street to Interstate 90/94 junction at Edens Expressway, Interstate 90 from Interstate 90/94 junction at Edens Expressway to Interstate 90/190, Interstate 190 from Interstate 90/190 junction to the east limits of O'Hare International Airport, Interstate 90 from the Interstate 90/190 junction to the tollway turnaround, the Ohio Street Feeder, from Orleans Street to Interstate 90/94 and all accident investigation sites located along Interstate 90/94.

ACCIDENT INVESTIGATION SITES:

1. INBOUND INTERSTATE 90/94 AT ADDISON STREET OFF RAMP.
2. INBOUND INTERSTATE 90/94 ALONG FULLERTON AVENUE UNDER INTERSTATE 90/94.
3. INBOUND INTERSTATE 90/94 IN THE OHIO STREET INFIELD.
4. INTERSTATE 90/94 AT POLK AVENUE.
5. OUTBOUND INTERSTATE 90/94 ALONG DIVISION STREET OFF RAMP.
6. OUTBOUND INTERSTATE 90/94 ALONG INTERSTATE 90/94 AT DAMEN AVENUE.
7. OUTBOUND INTERSTATE 90/94 ALONG FULLERTON AVENUE UNDER INTERSTATE 90/94.
8. OUTBOUND INTERSTATE 90/94 ALONG KIMBALL STREET OFF RAMP.
9. OUTBOUND INTERSTATE 94 ALONG FOSTER AVENUE OFF RAMP.
10. OUTBOUND INTERSTATE 90/94 JUST BEFORE LAWRENCE AVENUE OFF RAMP.

DU PAGE

REVISIONS	
NAME	DATE

ILLINOIS DEPARTMENT OF TRANSPORTATION

EXPRESSWAY CLEANING LOCATION MAP

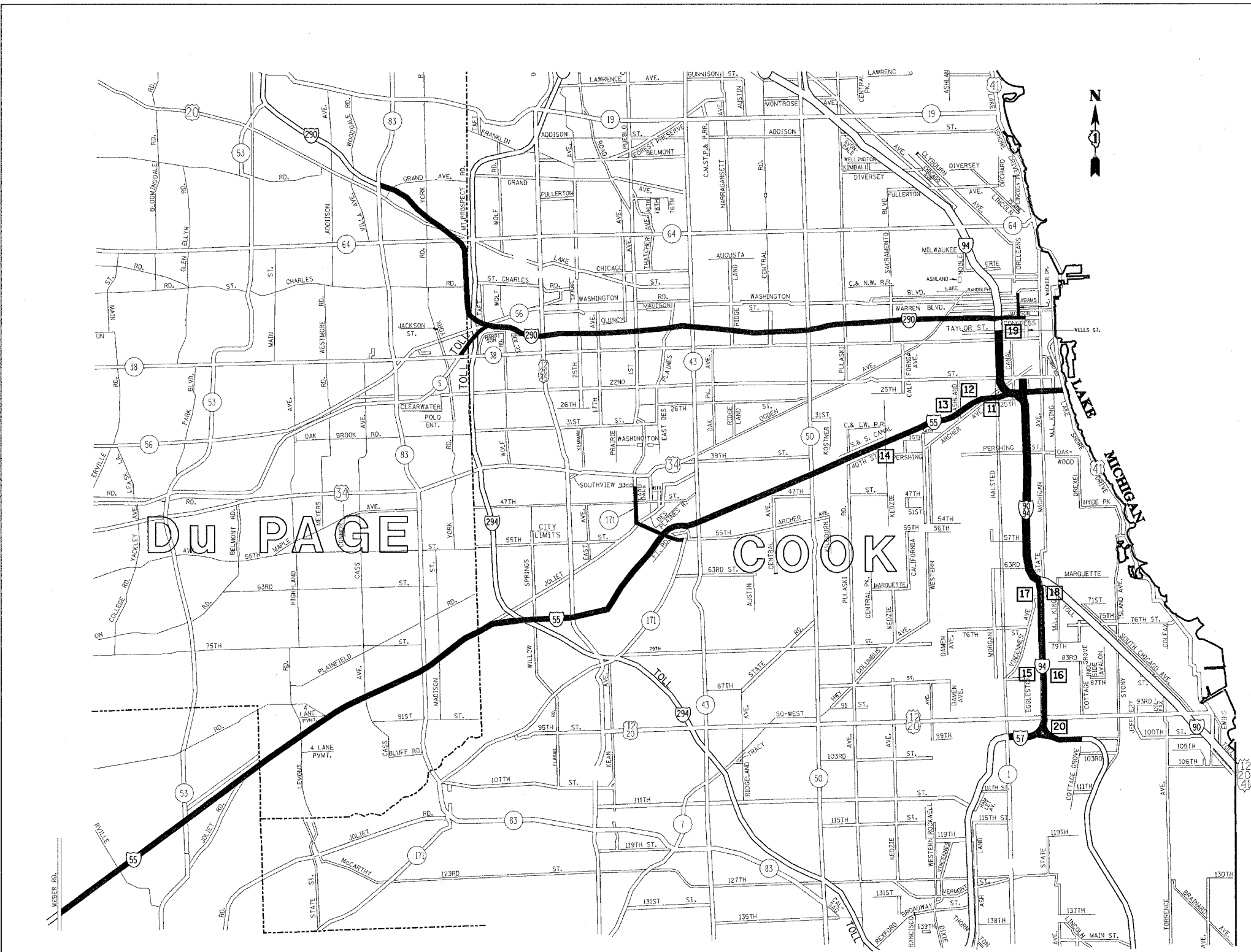
I-290 EXTENSION/ILL. 53, EDENS, KENNEDY & ELGIN-O'HARE

SCALE: VERT. DATE HORIZ. DRAWN BY CHECKED BY

PLOT DATE = 06/20/07
 FILE NAME = C:\Users\m127988\workspace\contract2008.dgn
 PLOT SCALE = 10,00000 / 1 IN.
 USER NAME = m127988

F.A. RTE.	SECTION	COUNTY	TOTAL SHEETS	SHEET NO.
VAR.	2004-127 I	*	15	7
STA.		TO STA.		
FED. ROAD DIST. NO.		ILLINOIS FED. AID PROJECT		

* COOK, DU PAGE, LAKE AND WILL



DAY CLEANING ONLY

Eisenhower Expressway

Interstate 290 from Wells St. to Austin Blvd. in its entirety, from Austin Blvd. to 25th Ave. right hand side and all ramps, the eastbound collector-distributor lanes and all ramps at the U.S. 12/20/45 (Mannheim Rd.) Interchange and to Roosevelt Rd. on its extension and Lower Wacker Dr. from Lake St. to the Eisenhower Expressway.

Stevenson Expressway

Interstate 55 (Stevenson Expressway) from Lake Shore Drive to the Cook-DuPage county line, including First Avenue, from 43rd Street to Archer Avenue, and all accident investigation sites.

I 55 Expressway

Interstate 55 from Cook-DuPage county line to Weber Rd., including all ramps to and from Illinois Route 53. Also included are the ramps and collector-distributor lanes at the Route 83 Interchange; and the ramps to and from Joliet Road from I-55 to east of the N.B. Tollway bridge and the Ramps from NB I-55 to NB Tollway and from SB Tollway to NB I-55 (Limits of cleaning on these Ramps are from I-55 to the first median crossover North of Joliet Rd.) and all accident investigation sites.

ACCIDENT INVESTIGATION SITES:

FOR LOCATIONS 1-10, SEE INNER CITY EXPRESSWAY (NORTH SECTION)

- 11. INBOUND INTERSTATE 55 AT HALSTED STREET
- 12. OUTBOUND INTERSTATE 55 AT THROOP STREET
- 13. INBOUND INTERSTATE 55 AT WOOD STREET. (LOCATED UNDER I-55)
- 14. OUTBOUND INTERSTATE 55 AT KEDZIE AVENUE
- 15. INTERSTATE 90/94 AT 87th STREET (NORTHBOUND AND SOUTHBOUND)
- 17. INTERSTATE 90/94 AT 71st STREET (NORTHBOUND AND SOUTHBOUND)
- 19. INTERSTATE 90/94 AT POLK STREET
- 20. INTERSTATE 90/94 AT KING DRIVE

NIGHT CLEANING ONLY

Eisenhower Expressway

Interstate 290 from Austin Blvd. to 25th Ave. left hand side only and from 25th Ave. to Ill. 83 including the ramps in its entirety except the eastbound collector-distributor lanes at the U.S. 12/20/45 Interchange and to Roosevelt Rd. on its extension.

Dan Ryan Expressway

Interstate 94 from Taylor Street to Cottage Grove Avenue, Interstate 57 from Interstate 94 to Halsted Street and Franklin Street connector from 22nd Street to Interstate 94

DISTRICT NO. 1

- STATE HIGHWAYS & EXPRESSWAYS WITHIN STATE JURISDICTION (EXCEPT TOLLWAYS)
- STATE HIGHWAYS & EXPRESSWAYS TO BE CLEANED
- FUTURE HIGHWAYS
- VARIOUS AGENCIES HIGHWAYS

REVISIONS	
NAME	DATE

ILLINOIS DEPARTMENT OF TRANSPORTATION
 EXPRESSWAY CLEANING LOCATION MAP
 EISENHOWER, STEVENSON & DAN RYAN
 SCALE: VERT. / HORIZ.
 DATE
 DRAWN BY
 CHECKED BY

PLOT DATE = 9/2/2007
 FILE NAME = c:\p\projects\m127988\expressway\ee12008.dgn
 PLOT SCALE = 5/8" = 1' IN.
 USER NAME = anna13

F.A. RTE.	SECTION	COUNTY	TOTAL SHEETS	SHEET NO.
VAR.	2004-127 I	*	15	8
STA.		TO STA.		
FED. ROAD DIST. NO.	ILLINOIS	FED. AID PROJECT		

* COOK, DU PAGE, LAKE AND WILL



DAY CLEANING ONLY

Bishop Ford/Kingery Expressway
 Interstate 94 from Cottage Grove Avenue to the Indiana State line excluding northbound left hand side from Cottage Grove Ave. to 103rd St., Illinois 394 from Interstate 94 to the Cook-Will County line and the entire Stony Island Avenue - 103rd Street Interchange. Interstate 80 from Interstate 94 to Interstate 294.

I-57 Expressway
 Interstate 57 from Halsted Street to Steger Road including the entire I-57 - I-80 interchange and all accident investigation sites.

- 21 - 23 INTERSTATE 57-3 LOCATIONS IN THE MEDIAN BETWEEN HALSTED AND 147th ST.
- 24. OUTBOUND INTERSTATE 57 AT 111th STREET EXIT RAMP
- 25 - 26 INTERSTATE 57 - 2 LOCATIONS ON THE 167th STREET RAMPS
- 27 INTERSTATE 57 - IN THE MEDIAN AT 119th STREET

I-80 Expressway
 Interstate 80 from Interstate 294 to the Dupage River (west of Interstate 55)

NIGHT CLEANING ONLY

Bishop Ford Expressway
 Interstate 94 from 103rd St. to Cottage Grove Ave. northbound left hand side only.

DISTRICT NO. 1

- STATE HIGHWAYS & EXPRESSWAYS WITHIN STATE JURISDICTION (EXCEPT TOLLWAYS)
- STATE HIGHWAYS & EXPRESSWAYS TO BE CLEANED
- FUTURE HIGHWAYS
- VARIOUS AGENCIES HIGHWAYS

INDIANA

PLOT DATE = 9/12/2007
 FILE NAME = \\snp\proj\27168\exp\reports\enr\2806.dgn
 PLOT SCALE = 50,000/200 / IN.
 USER NAME = enr\enr15

REVISIONS	
NAME	DATE

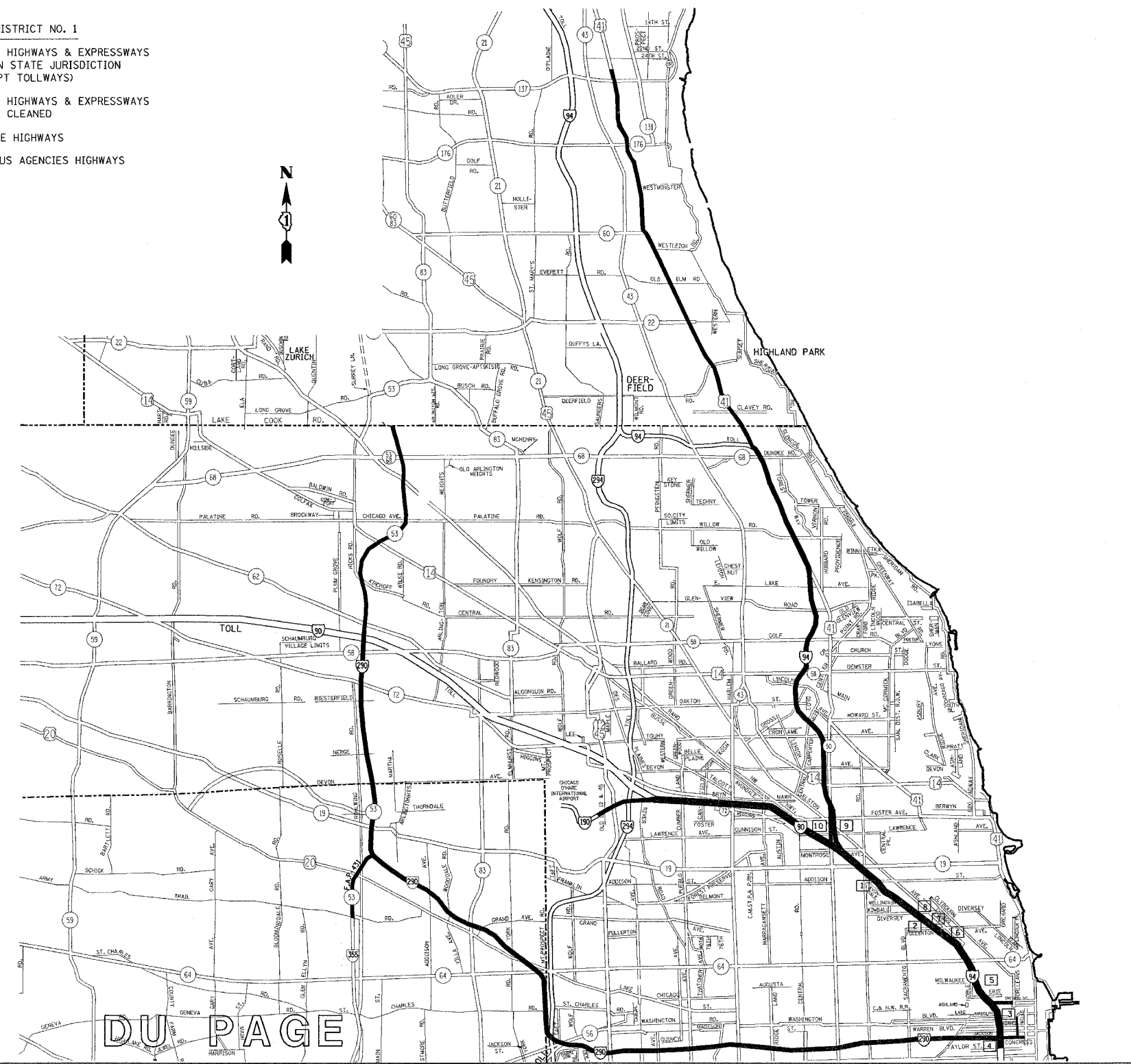
ILLINOIS DEPARTMENT OF TRANSPORTATION
 EXPRESSWAY CLEANING LOCATION MAP
 BISHOP FORD, KINGERY, I-57 AND I-80

SCALE: VERT. _____
 DATE _____
 DRAWN BY _____
 CHECKED BY _____

F.A. RTE.	SECTION	COUNTY	TOTAL SHEETS	SHEET NO.
VAR.	2004-127 I	*	15	9
STA.		TO STA.		
FED. ROAD DIST. NO.	ILLINOIS FED. AID PROJECT			

* COOK, DU PAGE, LAKE AND WILL

- DISTRICT NO. 1
- STATE HIGHWAYS & EXPRESSWAYS WITHIN STATE JURISDICTION (EXCEPT TOLLWAYS)
 - STATE HIGHWAYS & EXPRESSWAYS TO BE CLEANED
 - - - FUTURE HIGHWAYS
 - VARIOUS AGENCIES HIGHWAYS



DAY CLEANING ONLY

Edens Expressway
 Interstate 94 from Montrose to Dundee Road and U.S. 41 from Dundee Road to 700 lineal feet north of Illinois 137 including two ramps at Clavey Road, two ramps at West Park Avenue, four ramps at Deerpath Road and the entire US 41/Deerfield Road interchange. Also included is Tower Road from Edens Expressway to Forestway Drive.

Eisenhower Expressway
 Interstate 290 and its appurtenances from Wells St. to Austin Blvd. In its entirety, from Austin Blvd. to 25th Ave. right hand side and all ramps, the eastbound collector-distributor lanes and all ramps at the U.S. 12/20/45 (Mannheim Rd.) interchange and to Roosevelt Rd. on its extension and Lower Wacker Dr. from Lake St. to the Eisenhower Expressway.

I-290 Extension/IL. 53
 Interstate 290 Extension from Illinois 83 to Northwest Tollway, Illinois 53 from Northwest Tollway to Lake Cook Rd. including I-355 from I-290 to Army Trail Rd.

NIGHT CLEANING ONLY

Eisenhower Expressway
 Interstate 290 from Austin Blvd. to 25th Ave. left hand side only and 25th Ave. to Illinois 83 including the ramps in its entirety except the eastbound collector-distributor lanes at the U.S. 12/20/45 interchange and to Roosevelt Rd. on its extension.

Kennedy Expressway
 Interstate 90/94 from Taylor Street to Interstate 90/94 junction at Edens Expressway, Interstate 90 from Interstate 90/94 junction at Edens Expressway to Interstate 90/190, Interstate 190 from Interstate 90/190 junction to the east limits of O'Hare International Airport, Interstate 90 from the Interstate 90/190 junction to the tollway turnaround, the Ohio Street Feeder, from Orleans Street to Interstate 90/94 and all accident investigation sites located along Interstate 90/94.

ACCIDENT INVESTIGATION SITES:
 FOR LOCATIONS 11-14, SEE INNER CITY EXPRESSWAY (SOUTH SECTION)

1. INBOUND INTERSTATE 90/94 AT ADDISON STREET OFF RAMP.
2. INBOUND INTERSTATE 90/94 ALONG FULLERTON AVENUE UNDER INTERSTATE 90/94.
3. INBOUND INTERSTATE 90/94 IN THE OHIO STREET INFIELD.
4. INTERSTATE 90/94 AT POLK AVENUE.
5. OUTBOUND INTERSTATE 90/94 ALONG DIVISION STREET OFF RAMP.
6. OUTBOUND INTERSTATE 90/94 ALONG INTERSTATE 90/94 AT DAMEN AVENUE.
7. OUTBOUND INTERSTATE 90/94 ALONG FULLERTON AVENUE UNDER INTERSTATE 90/94.
8. OUTBOUND INTERSTATE 90/94 ALONG KIMBALL STREET OFF RAMP.
9. OUTBOUND INTERSTATE 94 ALONG FOSTER AVENUE OFF RAMP.
10. OUTBOUND INTERSTATE 90/94 JUST BEFORE LAWRENCE AVENUE OFF RAMP.

DU PAGE

FOR INNER CITY EXPRESSWAY (SOUTH SECTION) SEE SHEET NUMBER 11

REVISIONS	
NAME	DATE

ILLINOIS DEPARTMENT OF TRANSPORTATION

INNER CITY EXPRESSWAY
 LOCATION MAP
 (NORTH SECTION)

SCALE: VERT.
 DATE: HORIZ.

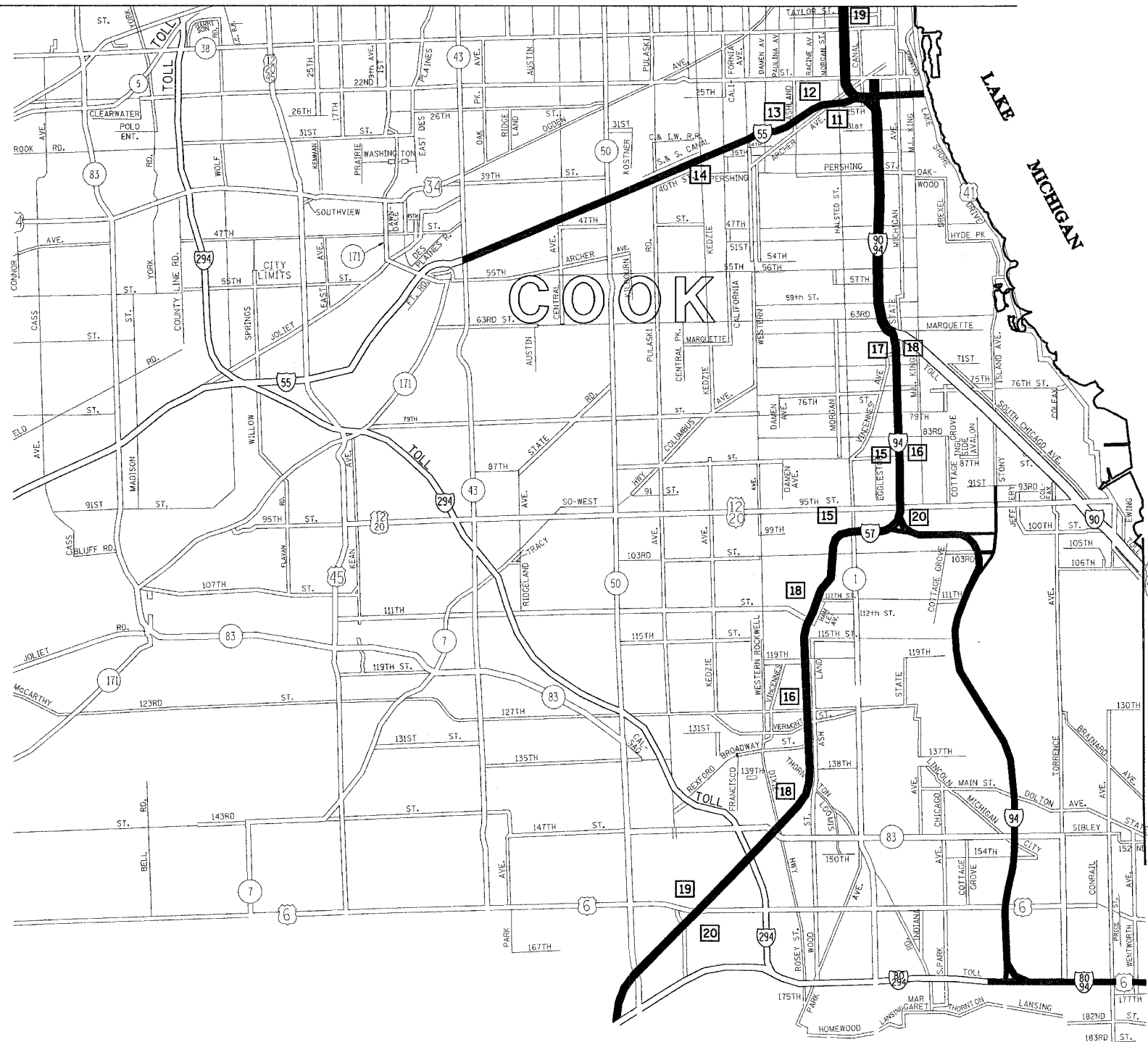
DRAWN BY
 CHECKED BY

F.A. RTE.	SECTION	COUNTY	TOTAL SHEETS	SHEET NO.
VAR.	2004-127 I	*	15	10
STA.		TO STA.		
FED. ROAD DIST. NO.	ILLINOIS FED. AID PROJECT			

* COOK, DU PAGE, LAKE AND WILL



FOR INNER CITY EXPRESSWAY (NORTH SECTION) SEE SHEET NUMBER 10



DAY CLEANING ONLY

Bishop Ford/Kingery Expressway

Interstate 94 from Cottage Grove Ave to the Indiana State line excluding northbound left hand side Cottage Grove Ave to 103rd Street. Illinois 394 from Interstate 94 to the Cook-Will County line and the entire Stony Island Ave. -103rd Street Interchange. Interstate 80 from Interstate 94 +1 Interstate 294.

Stevenson Expressway

Interstate 55 from Lake Shore Drive to Illinois Route 43 (Harlem Ave.) including all accident investigation sites.

ACCIDENT INVESTIGATION SITES:

FOR LOCATIONS 1-10, SEE INNER CITY EXPRESSWAY (NORTH SECTION)

- 11. INBOUND INTERSTATE 55 AT HALSTED STREET
- 12. OUTBOUND INTERSTATE 55 AT THROOP STREET
- 13. INBOUND INTERSTATE 55 AT WOOD STREET. (LOCATED UNDER I-55)
- 14. OUTBOUND INTERSTATE 55 AT KEDZIE AVENUE
- 15. 16. INTERSTATE 90/94 AT 87th STREET (NORTHBOUND AND SOUTHBOUND)
- 17. 18. INTERSTATE 90/94 AT 71st STREET (NORTHBOUND AND SOUTHBOUND)
- 19. INTERSTATE 90/94 AT POLK STREET
- 20. INTERSTATE 90/94 AT KING DRIVE

I-57 Expressway

Interstate 57 from Hasted St. to Interstate 80 including the entire I-57 - I-80 Interchange and all accident investigation sites.

- 21 - 23. INTERSTATE 57-3 LOCATIONS IN THE MEDIAN BETWEEN HALSTED AND 147th ST.
- 24. OUTBOUND INTERSTATE 57 AT 111th STREET EXIT RAMP
- 25 - 26. INTERSTATE 57 - 2 LOCATIONS ON THE 167th STREET RAMPS
- 27. INTERSTATE 57 - IN THE MEDIAN AT 119th STREET

NIGHT CLEANING ONLY

Dan Ryan Expressway

Interstate 94 from Taylor Street to Cottage Grove Avenue. Interstate 57 from Interstate 94 to Halsted Street and Franklin Street connector from 22nd Street to Interstate 94.

Bishop Ford Expressway

Interstate 94 from 103rd Street to Cottage Grove Avenue northbound left hand side only.

DISTRICT NO. 1

- STATE HIGHWAYS & EXPRESSWAYS WITHIN STATE JURISDICTION (EXCEPT TOLLWAYS)
- STATE HIGHWAYS & EXPRESSWAYS TO BE CLEANED
- FUTURE HIGHWAYS
- VARIOUS AGENCIES HIGHWAYS
- ACCIDENT INVESTIGATION SITE TO BE CLEANED

REVISIONS	
NAME	DATE

ILLINOIS DEPARTMENT OF TRANSPORTATION

INNER CITY EXPRESSWAY
LOCATION MAP
(SOUTH SECTION)

SCALE: VERT.
DATE: HORIZ.

DRAWN BY
CHECKED BY

CONTRACT NO. 62894

F.A. RTE.	SECTION	COUNTY	TOTAL SHEETS	SHEET NO.
VAR.	2004-127 I	*	15	12
STA.		TO STA.		
FED. ROAD DIST. NO.	ILLINOIS	FED. AID PROJECT		

SEE PREVIOUS PAGE FOR UPPER PART OF THE MAP

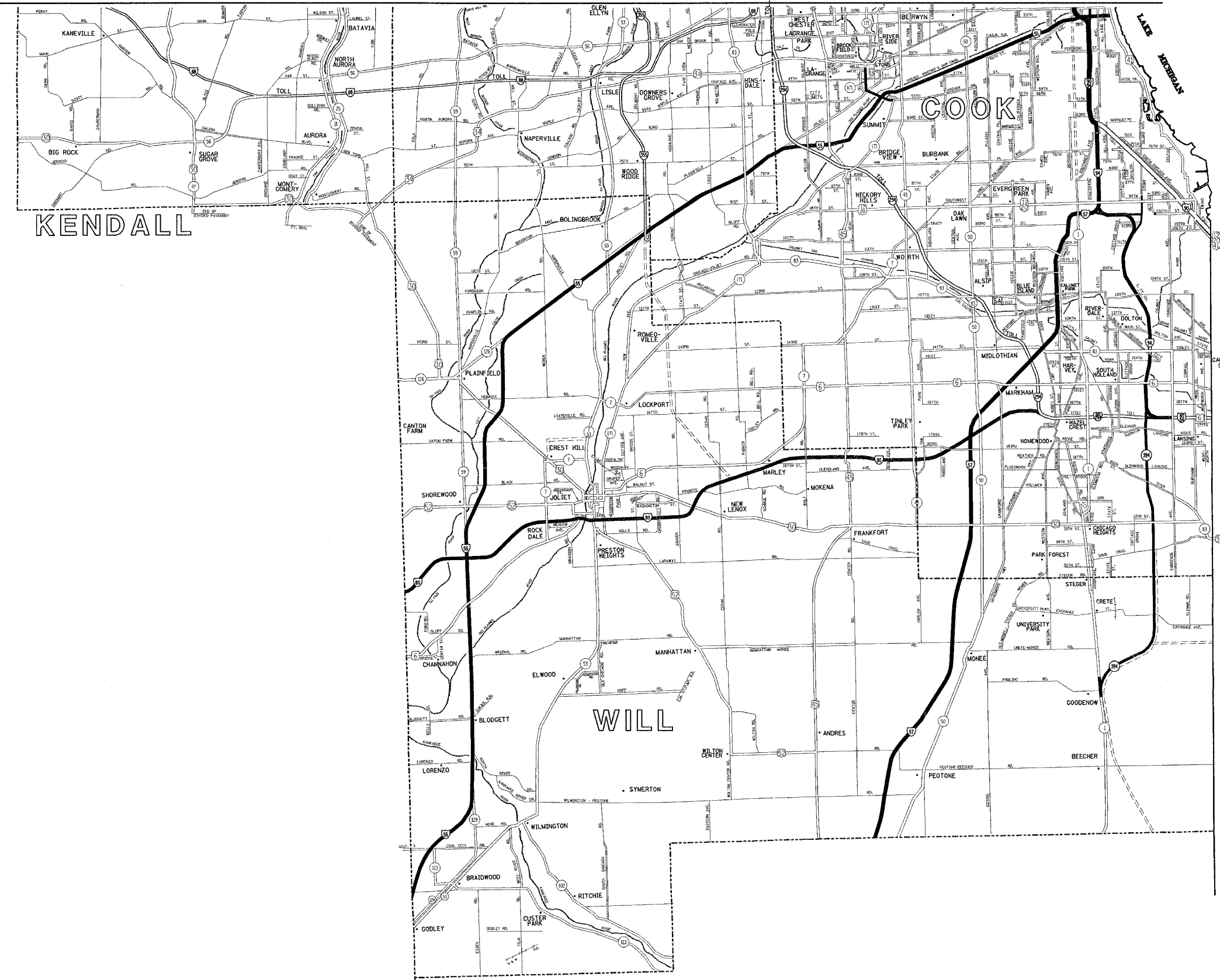
* COOK, DU PAGE, LAKE AND WILL

DISTRICT NO. 1
MAINTENANCE DESIGNATIONS

STATE HIGHWAYS & EXPRESSWAYS



INDIANA



REVISIONS	
NAME	DATE

ILLINOIS DEPARTMENT OF TRANSPORTATION

EXPRESSWAY LABORING LOCATION MAP

SCALE: VERT.
HORIZ.
DATE

DRAWN BY
CHECKED BY

8/6/2007
 DATE = 8/6/2007
 TIME = 10:40:00 AM
 FILE NAME = I:\27988\maping\contract2008.dgn
 PLOT SCALE = 50.0000 / IN.
 USER NAME = enaaris

NOTES:

PROTECTION VEHICLE NUMBER 2 SHALL BE PLACED IN ADVANCE OF HORIZONTAL OR VERTICAL CURVES TO PROVIDE ADVANCE WARNING FOR WORK OPERATIONS HIDDEN BY CURVES.

TMA MAY BE USED ON WORK VEHICLE.

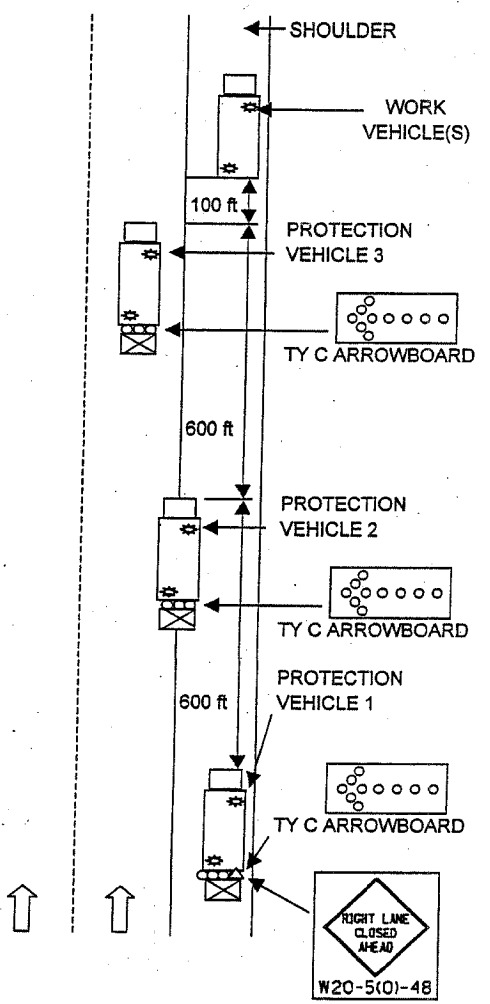
VEHICLES USED SHALL BE MADE HIGHLY VISIBLE WITH APPROPRIATE EQUIPMENT SUCH AS FLASHING LIGHTS, ROTATING BEACONS, FLAGS, SIGNS, OR ARROW DISPLAYS.

ALL PROTECTION VEHICLES SHALL HAVE ARROW DISPLAYS, AND TRUCK MOUNTED ATTENUATORS.

DETAIL MAY BE USED FOR WORK IN LEFT OR RIGHT LANE.

DURING SIGN CLEANING OPERATIONS WHEN WORKERS(VEHICLES) DO NOT ENCROACH INTO TRAVEL LANES, PROTECTION VEHICLES SHALL REMAIN ON THE SHOULDER.

- KEY:**
- △ SIGN- W20-5(0)-48 LEFT OR RIGHT LANE CLOSED AHEAD
 - ∞ ARROWBOARD (TYPE C)
 - ⊛ VEHICLE SAFETY LIGHT
 - ↑ DIRECTION OF TRAFFIC
 - ⊠ TRUCK MOUNTED ATTENUATOR (TMA)



REVISIONS	
NAME	DATE

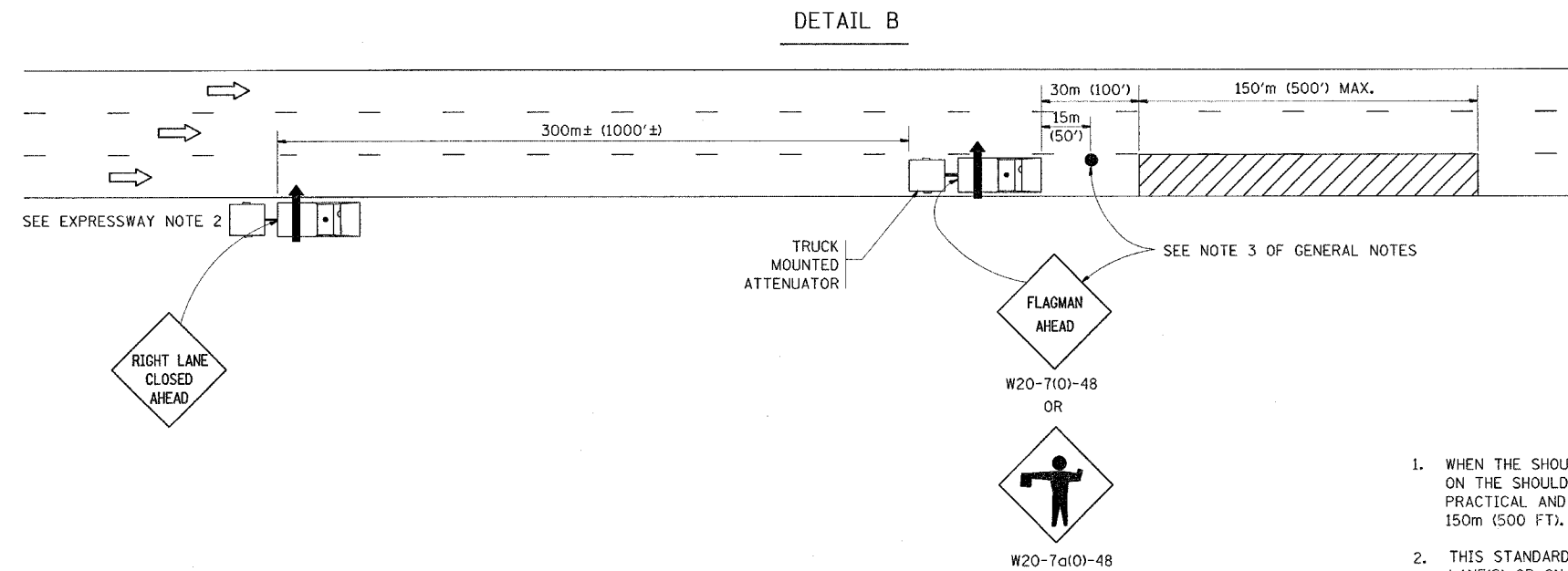
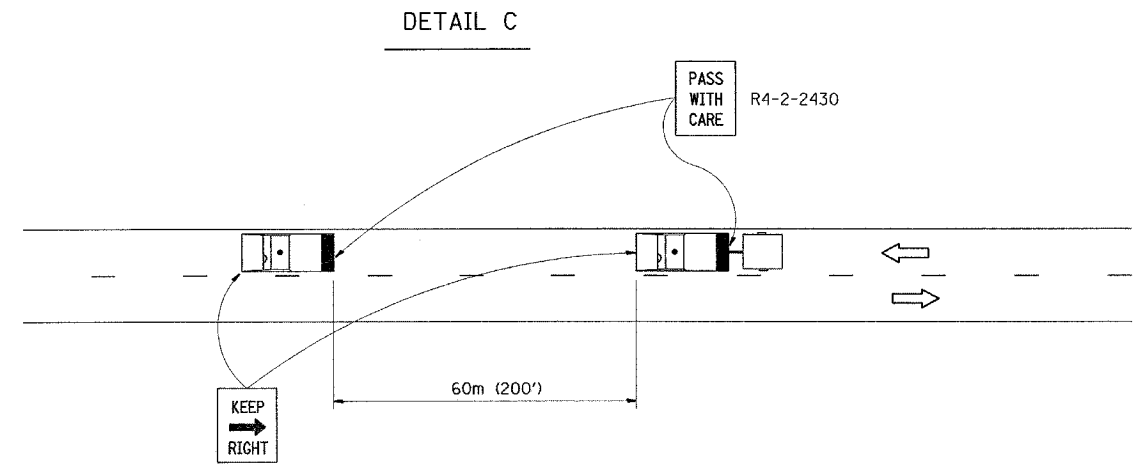
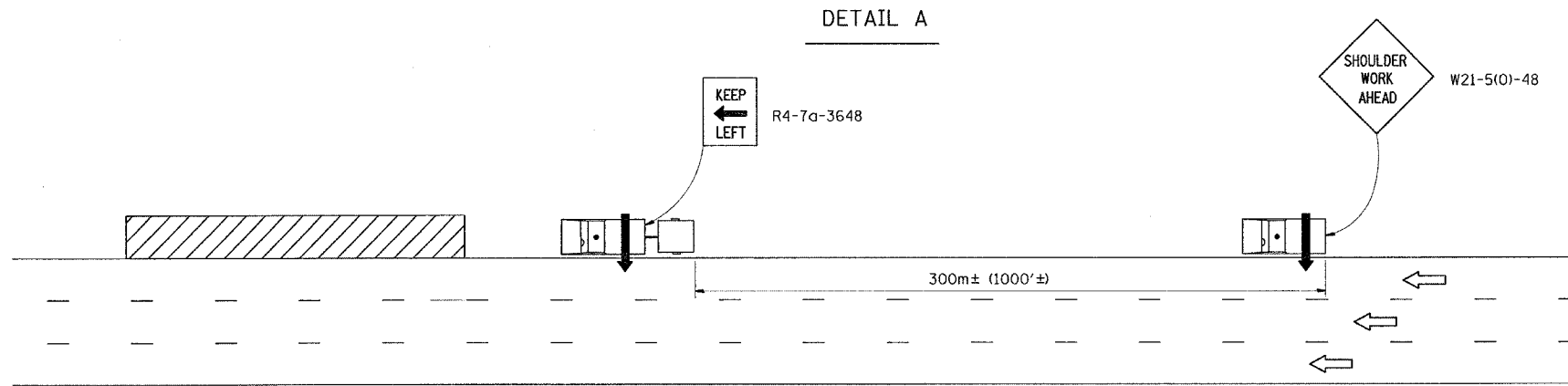
ILLINOIS DEPARTMENT OF TRANSPORTATION
 DISTRICT ONE DETAILS:
 TYPICAL APPLICATION OF
 TRAFFIC CONTROL DEVICES
 HIGHWAY AND SIGN CLEANING
 OPERATIONS-NIGHT TIME ONLY

SCALE: VERT. _____
 HORIZ. _____

DATE _____
 DRAWN BY _____
 DESIGNED BY _____
 CHECKED BY _____

F.A. RFL.	SECTION	COUNTY	TOTAL SHEETS	SHEET NO.
VAR.	2004-127 I	*	15	14
STA.		TO STA.		
FED. ROAD DIST. NO.	ILLINOIS	FED. AID PROJECT		

* COOK, DU PAGE, LAKE AND WILL



GENERAL NOTES

1. WHEN THE SHOULDER DOES NOT EXIST, OR IS NARROW, FOLLOWING VEHICLES SHOWN ON THE SHOULDER SHALL RIDE AS CLOSE TO THE EDGE OF THE TRAVELLED WAY AS PRACTICAL AND THE SPACING TO THE NEXT VEHICLE REDUCED TO APPROXIMATELY 150m (500 FT).
2. THIS STANDARD IS ALSO APPLICABLE WHEN WORK IS BEING PERFORMED IN THE LEFT LANE(S) OR ON THE MEDIAN SHOULDER. UNDER THESE CONDITIONS, "KEEP RIGHT" SIGNS SHALL BE SUBSTITUTED FOR "KEEP LEFT" SIGNS AND ARROW BOARD INDICATIONS SHALL BE DIRECTED TO THE RIGHT.
3. WHEN FLAGGERS ARE SPECIFIED, FLAGGER SIGNS SHALL BE PLACED AS SHOWN.
4. WHEN USING DETAIL B, OR WHERE WORKERS ARE IN THE LEAD VEHICLE, OTHER THAN IN THE CAB, THE FOLLOWING VEHICLE SHALL BE POSITIONED BEHIND THE LEAD VEHICLE AND THE SPACING REDUCED TO APPROXIMATELY 150m (500 FT).
5. LONGITUDINAL DISTANCES MAY BE ADJUSTED TO FIT FIELD CONDITIONS. THE LATERAL PLACEMENT OF THE FLAGGER MAY BE VARIED FROM THAT SHOWN.
6. WATER TRUCKS USED TO CONTROL DUST PROPAGATION ARE ALLOWED TO OPERATE BY THEMSELVES. THEY SHALL AVOID SUDDEN STOPS.
7. ALL VEHICLES SHALL HAVE HEADLIGHTS AND EMERGENCY FLASHERS OPERATING AND SHALL DISPLAY AN AMBER COLORED OSCILLATING, ROTATING OR FLASHING LIGHT(S). AT LEAST ONE AMBER LIGHT IS TO BE VISIBLE FROM ANY DIRECTION.
8. ALL SWEEPERS, SIGN CLEANING TRUCKS, WATER TRUCKS AND FOLLOW VEHICLES SHALL HAVE ARROW BOARDS, AND APPROPRIATE SIGNS.

SYMBOLS

- ARROW BOARD (HAZARD MODE ONLY)
- ARROW BOARD
- FLAGGER WITH TRAFFIC CONTROL SIGNS
- WORK AREA
- TRUCK WITH FLASHING AMBER LIGHT
- TRUCK WITH FLASHING AMBER LIGHT AND TRUCK MOUNTED ATTENUATOR

EXPRESSWAY NOTES

1. A FOLLOW VEHICLE(S) WITH ARROW BOARD IS REQUIRED AT ALL TIMES.
2. TRUCK MOUNTED ATTENUATORS ARE REQUIRED ON ALL CLEANING OPERATIONS.
3. WHEN WITHIN THE INNER CITY LIMITS OR ON SHOULDERS THAT ARE TOO NARROW FOR THE FOLLOW VEHICLE, THE SECOND FOLLOW VEHICLE SHALL HAVE A TRUCK MOUNTED ATTENUATOR.
4. WHEN WORKING ON RAMP, THE SECOND FOLLOW VEHICLE SHALL REMAIN ON THE MAINLINE SHOULDER IN ADVANCE OF THE RAMP. THE FOLLOW VEHICLE SHALL HAVE A "RAMP WORK AHEAD" SIGN.
5. SIGN CLEANING SHALL HAVE THE SAME TRAFFIC CONTROL AND PROTECTION REQUIREMENTS AS OUTLINED FOR SWEEPING OPERATIONS.

ARTERIAL NOTES

1. DETAIL C SHALL APPLY
2. TRUCK MOUNTED ATTENUATORS ARE REQUIRED ON ALL CLEANING OPERATIONS.

REVISIONS	
NAME	DATE

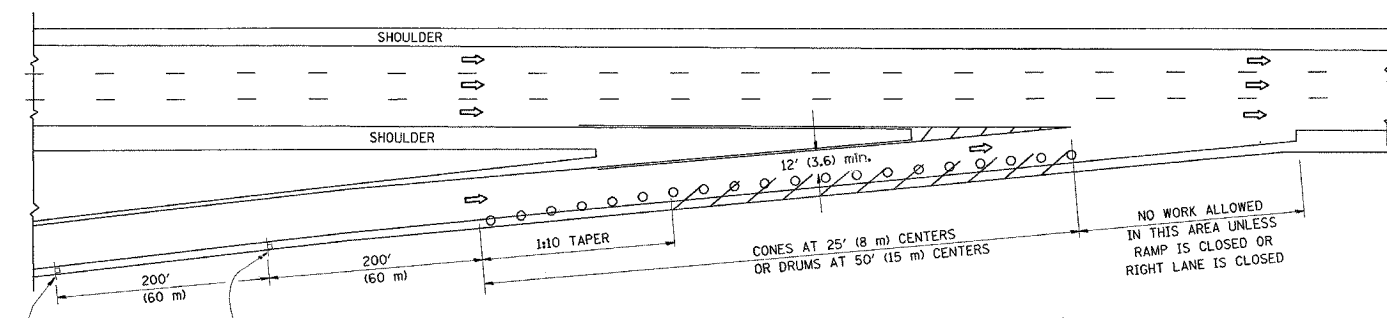
ILLINOIS DEPARTMENT OF TRANSPORTATION
**DISTRICT ONE DETAILS:
 TYPICAL APPLICATION OF
 TRAFFIC CONTROL DEVICES
 HIGHWAY AND SIGN CLEANING
 OPERATIONS-DAY TIME ONLY**

SCALE: NONE DRAWN BY CAD
 DATE 9/5/2007 CHECKED BY

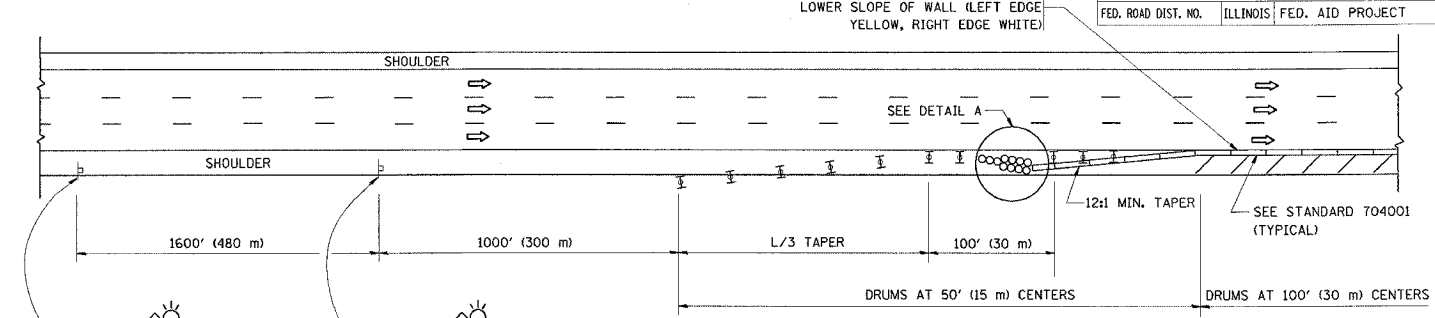
F.A. RTE.	SECTION	COUNTY	TOTAL SHEETS	SHEET NO.
VAR. 2004-127 I		VAR.	15	15
STA. TO STA.		FED. ROAD DIST. NO. ILLINOIS FED. AID PROJECT		

PARTIAL RAMP CLOSURE DETAILS

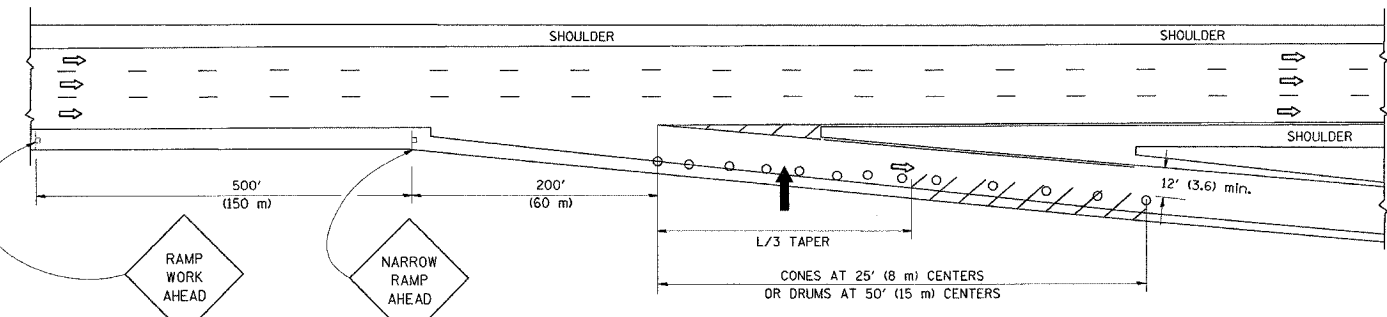
SHOULDER CLOSURE DETAILS



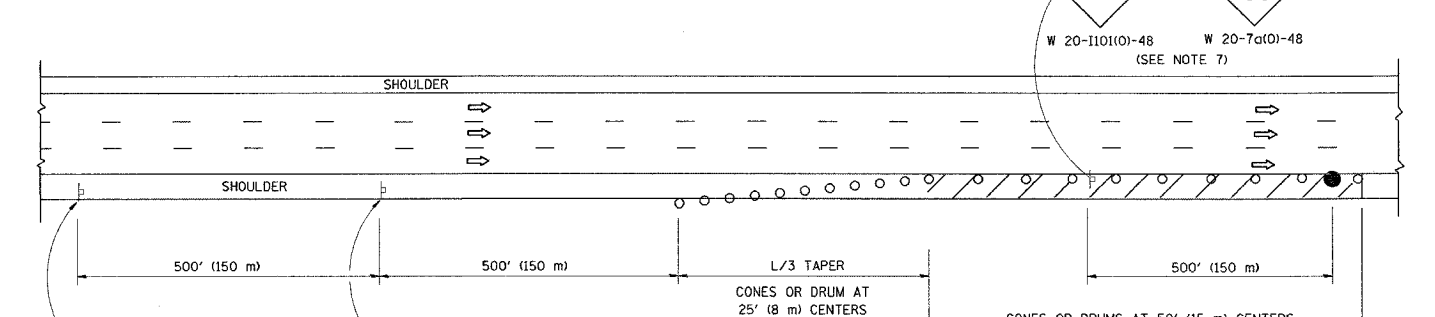
TYPICAL ENTRANCE RAMP



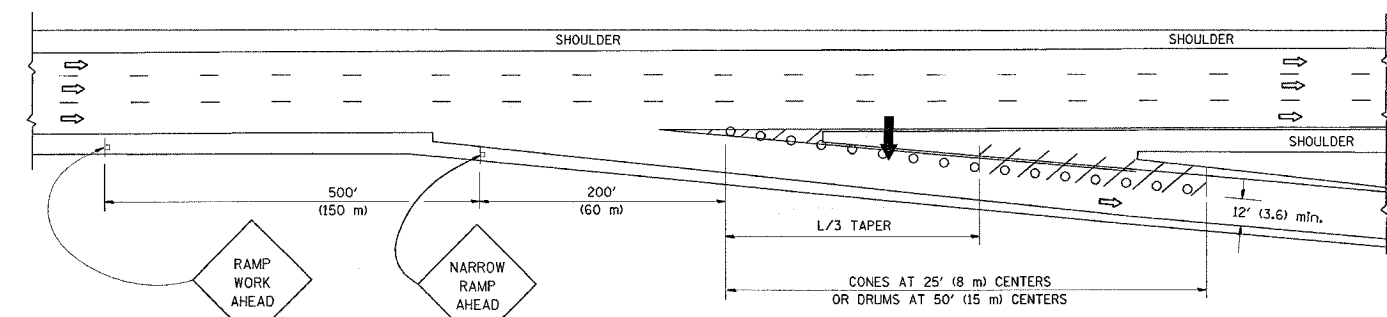
PERMANENT SHOULDER CLOSURE



TYPICAL EXIT RAMP



DAYTIME SHOULDER CLOSURE



TYPICAL EXIT RAMP

SYMBOLS

- ARROWBOARD
- WORK AREA
- SIGN ON PORTABLE OR PERMANENT SUPPORT
- FLAGGER WITH CONTROL SIGN
- TYPE II BARRICADE, DRUM OR VERTICAL BARRICADE WITH STEADY BURN MONO-DIRECTIONAL LIGHT
- CONE, DRUM OR BARRICADE

GENERAL NOTES

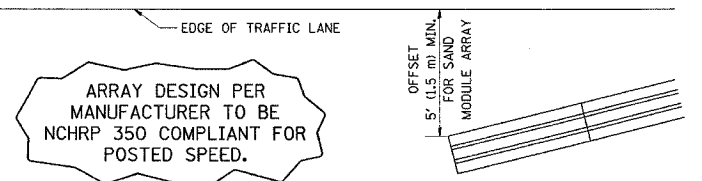
1. THE "L" DISTANCE EQUALS:

SPEED LIMIT	FORMULAS
45 mph (80 km/h) OR GREATER:	METRIC ENGLISH
	$L=0.65(W)(S)$ $L=(W)(S)$

W = WIDTH OF OFFSET IN FEET (METERS)
 S = NORMAL POSTED SPEED MPH (KM/H)
2. PLASTIC DRUMS WITH HIGH PERFORMANCE REFLECTIVE SHEETING AND STEADY BURNING LIGHTS ARE REQUIRED FOR ALL NIGHTTIME CLOSURES.
3. ALL SIGNS SHALL BE POST MOUNTED IF THE CLOSURE TIME EXCEEDS FOUR DAYS.
4. FLASHING LIGHTS SHALL BE USED DURING THE HOURS OF DARKNESS AND SHALL BE INSTALLED ABOVE THE FIRST TWO SETS OF SIGNS.

5. THE IMPACT ATTENUATOR, TEMPORARY IS NOT REQUIRED WHEN THE TEMPORARY CONCRETE BARRIER WALL IS PROTECTED BY OR IS TIED INTO THE EXISTING GUARDRAIL. IF OFFSET IS LESS THAN 5 FEET USE "TRAFFIC BARRIER TERMINAL, TYPE III, TEMPORARY" DEVICE TO MEET NCHRP350 FOR POSTED SPEED.

6. AUTHORIZATION FROM THE DISTRICT'S BUREAU OF TRAFFIC IS REQUIRED FOR ALL FREEWAY CLOSURES.
7. THE FLAGGER AND FLAGGER SIGN ARE REQUIRED AT THE ABOVE WORK SITES WHEN:
 - a. FOUR OR MORE WORK VEHICLES ENTER THE TRAFFIC LANES IN A ONE HOUR PERIOD.
 - b. THE WORK ACTIVITY REQUIRES FREQUENT ENCROACHMENT INTO THE LANE OPEN TO TRAFFIC.
 THE FLAGGER SHALL BE STATIONED APPROXIMATELY 100' (30 m) TO 200' (60 m) IN ADVANCE OF THE WORKERS.



DETAIL "A"
IMPACT ATTENUATOR, TEMPORARY
(SEE NOTE 5)

ALL DIMENSIONS ARE IN INCHES (MILLIMETERS) UNLESS OTHERWISE SHOWN.

REVISIONS		
NAME	DATE	
DWS	11/96	
JAF	12/02	
NCHRP 350	04/03	
JAF	2/06	
SPB	1/07	

ILLINOIS DEPARTMENT OF TRANSPORTATION
**TRAFFIC CONTROL DETAILS
 FOR FREEWAY
 SHOULDER CLOSURES
 PARTIAL RAMP CLOSURES**
 DESIGNED BY: DWS
 SCALE: NONE
 DRAWN BY:
 CHECKED BY:
 TC-17

PLOT DATE = 9/25/2007
 PLOT SCALE = 8000000 / IN.
 USER NAME = msdjuo