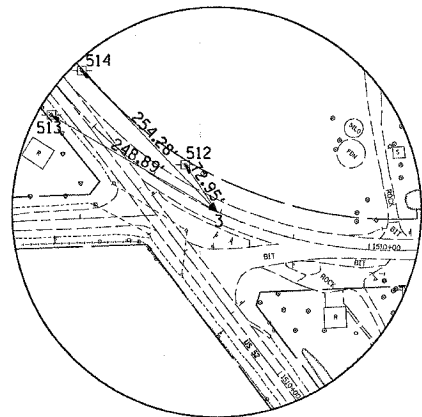
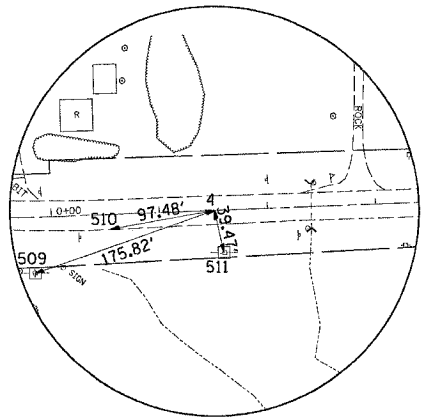


F.A.S. RTE.	SECTION	COUNTY	TOTAL SHEETS	SHEET NO.
2079	**	CARROLL & OGLE	232	41
STA.	TO STA.			
FED. ROAD DIST. NO.	ILLINOIS	FED. AID PROJECT		
(US 52)	** (16, 17, 18)RS-3 & (16BR)M-1			

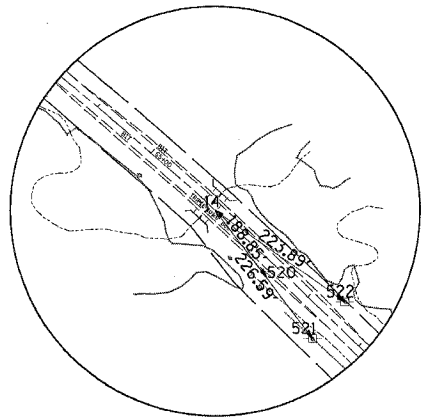
# EXISTING HORIZONTAL & VERTICAL CONTROL



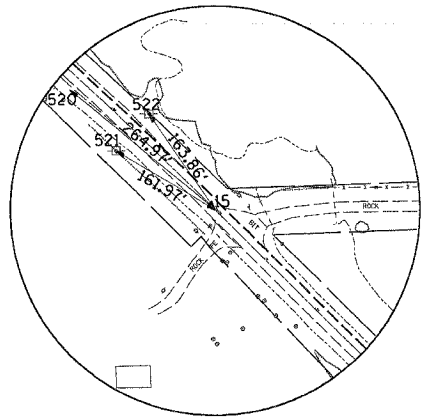
HORIZONTAL CONTROL POINT No. 3



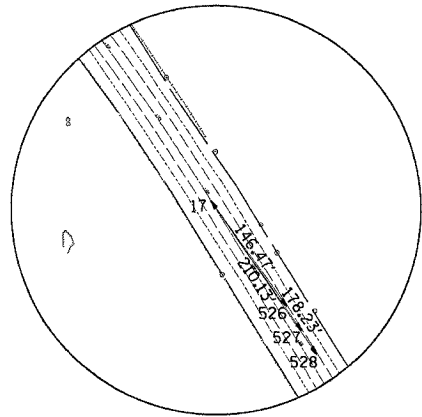
HORIZONTAL CONTROL POINT No. 4



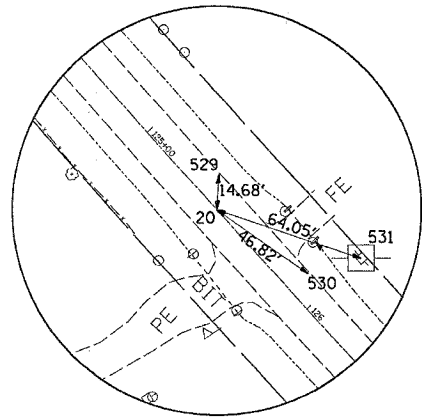
HORIZONTAL CONTROL POINT No. 14



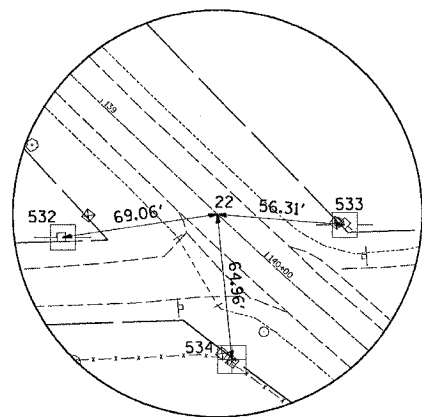
HORIZONTAL CONTROL POINT No. 15



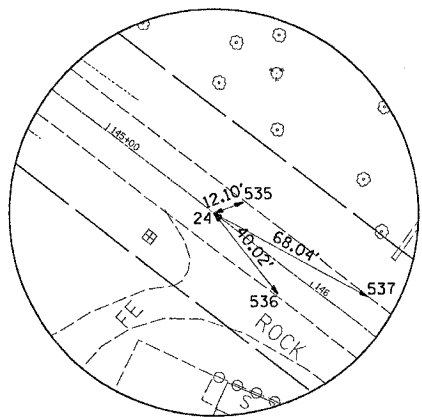
HORIZONTAL CONTROL POINT No. 17



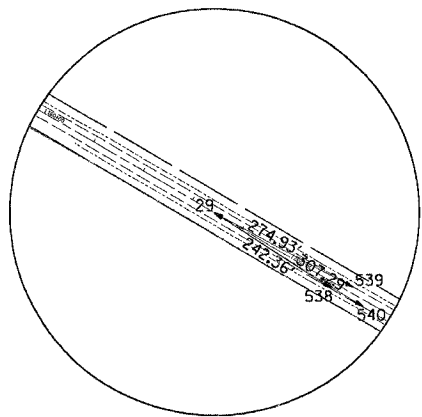
HORIZONTAL CONTROL POINT No. 20



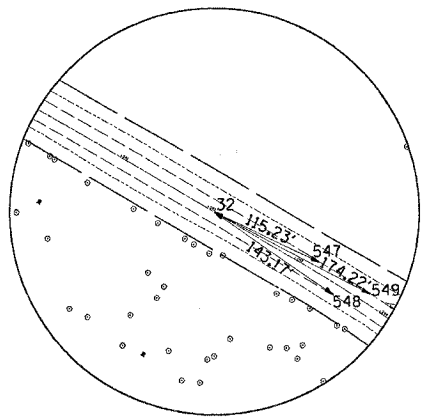
HORIZONTAL CONTROL POINT No. 22



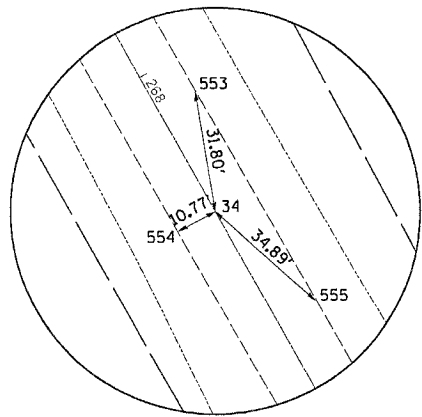
HORIZONTAL CONTROL POINT No. 24



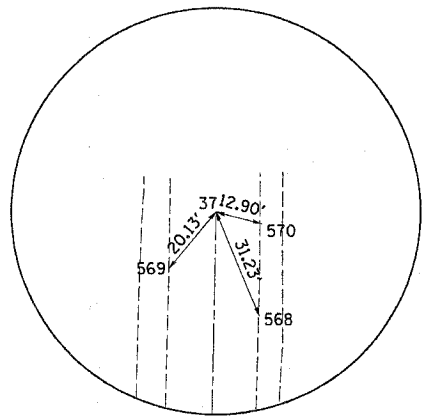
HORIZONTAL CONTROL POINT No. 29



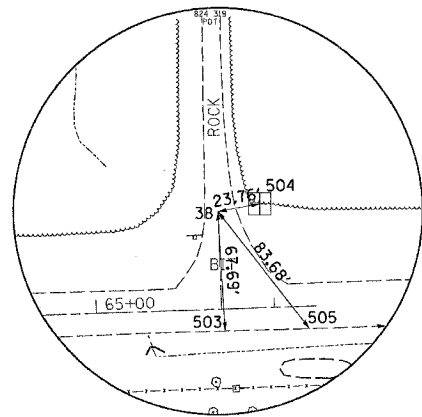
HORIZONTAL CONTROL POINT No. 32



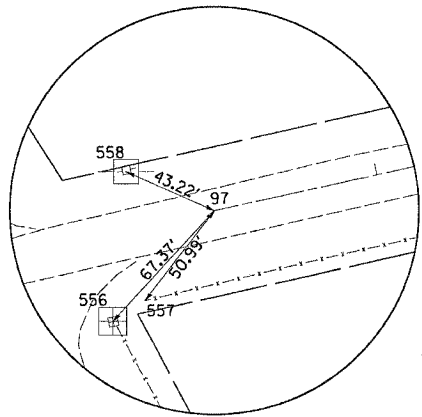
HORIZONTAL CONTROL POINT No. 34



HORIZONTAL CONTROL POINT No. 37



HORIZONTAL CONTROL POINT No. 38



HORIZONTAL CONTROL POINT No. 97

PLOT DATE = Thu Mar 08 06:54:45 2007  
 FILE NAME = c:\projects\1620685\1620685hv.dgn  
 PLOT SCALE = 1/8" = 1' IN.  
 USER NAME = dcorrad

REVISIONS	
NAME	DATE

ILLINOIS DEPARTMENT OF TRANSPORTATION

**FAS ROUTE 2079 (US 52)**

**SECTION (16, 17, 18)RS-3 & (16BR)M-1**

**CARROLL & OGLE COUNTIES**

VERT. SCALE: HORIZ. DATE

DRAWN BY \_\_\_\_\_  
 CHECKED BY \_\_\_\_\_